

The VW Microbus.



The VW Microbus.

See it.

It's good to look at and has qualities well worth looking into. Its surprisingly compact, handy shape lets you slip into ordinary parking spaces. The astonishingly large, luxurious in-

terior provides ample space for 9 people. It is often compared to a saloon, which is a bit unfair. To the saloon, that is.

Drive it.

Every year there's some improvement in engineering, safety and driving comfort. Now there's the much more powerful 1.8 liter engine (as well as the 1.6 liter version) for the VW Micro-

bus, also available with VW's successful automatic transmission. This makes driving even simpler, safer and more convenient.

Choose it.

You can have the VW Microbus to seat seven, eight or nine people. It's just a question of what you need and how the seats are arranged. Furthermore, each of these versions is available

with regular or luxury appointments. Whichever version you pick, you'll always pick a winner.

Own it.

That's easily done, thanks to the world-wide VW Service. And it's easy to keep, thanks to the VW Service with the VW Diagnosis and the VW Maintenance Service. And thanks to genuine VW

Spare Parts and the many VW Accessories. When you have a VW Microbus, naturally you have all the advantages of VW along with it.

Love it.

It has everything that makes a Volkswagen a Volkswagen: VW quality, VW reliability, VW economy. But that is not all that made it the best-selling bus it is. It is loved because it is so kind

to people. It doesn't treat its passengers like crates or its chauffeurs like lorry drivers.

Buy it.

It is available with two different engines, manual or automatic transmission, five different seat covers and six paint colours. To make your decision easier we have arranged the wealth of

engineering detail on the VW Microbus in a table for easy reference. Now you will find it even easier to pick the model and colours that suit you best.



See the VW Microbus – it's very inviting from outside.

With colours as handsome as you'd find on a saloon. A compact, handy shape practically unmatched by any other vehicle in its class. And an altogether attractive appearance.

You'll notice the wide bumper bars (with black rubber strips and in chrome in the « L » version).

Less obvious but just as effective, is the deformable section behind the front bumper bar. This operates as an impact-absorbing crumple zone to take the force out of a collision.

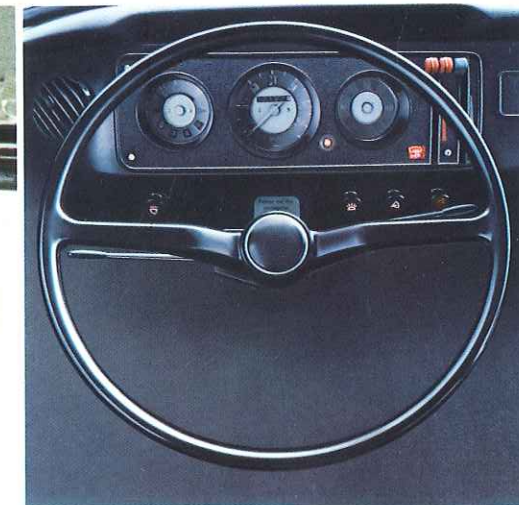
We've also improved the sliding door. The door handle has grown larger, the lock release

lever now opens in the same direction as the door handle and there's no need to lock the door—the lever catches automatically in place.

The people who are expected (or privileged) to drive it find it inviting too. Even hefty six-footers can get in and out through the huge slid-

ing doors with ease. And you can tell by the look of it that you are in for a smooth ride without bumps and jolts.

Nor should we forget to mention that this huge saloon fits easily in any ordinary parking place. Which is a pretty inviting prospect too.



See the VW Microbus – outstandingly outfitted inside.

Here's an interior that has the qualities of a comfortable passenger car—more in fact of the most important quality, room for passengers. But it's built for compactness from stem to stern. Not an inch is wasted on useless frills such as tail fins or gracefully sweeping wings. It makes itself useful wherever it can, to you and your business. Its outstanding interior doesn't really show what it can do until you take eight people

for a ride at once. It is not only outstanding outside but inside too.

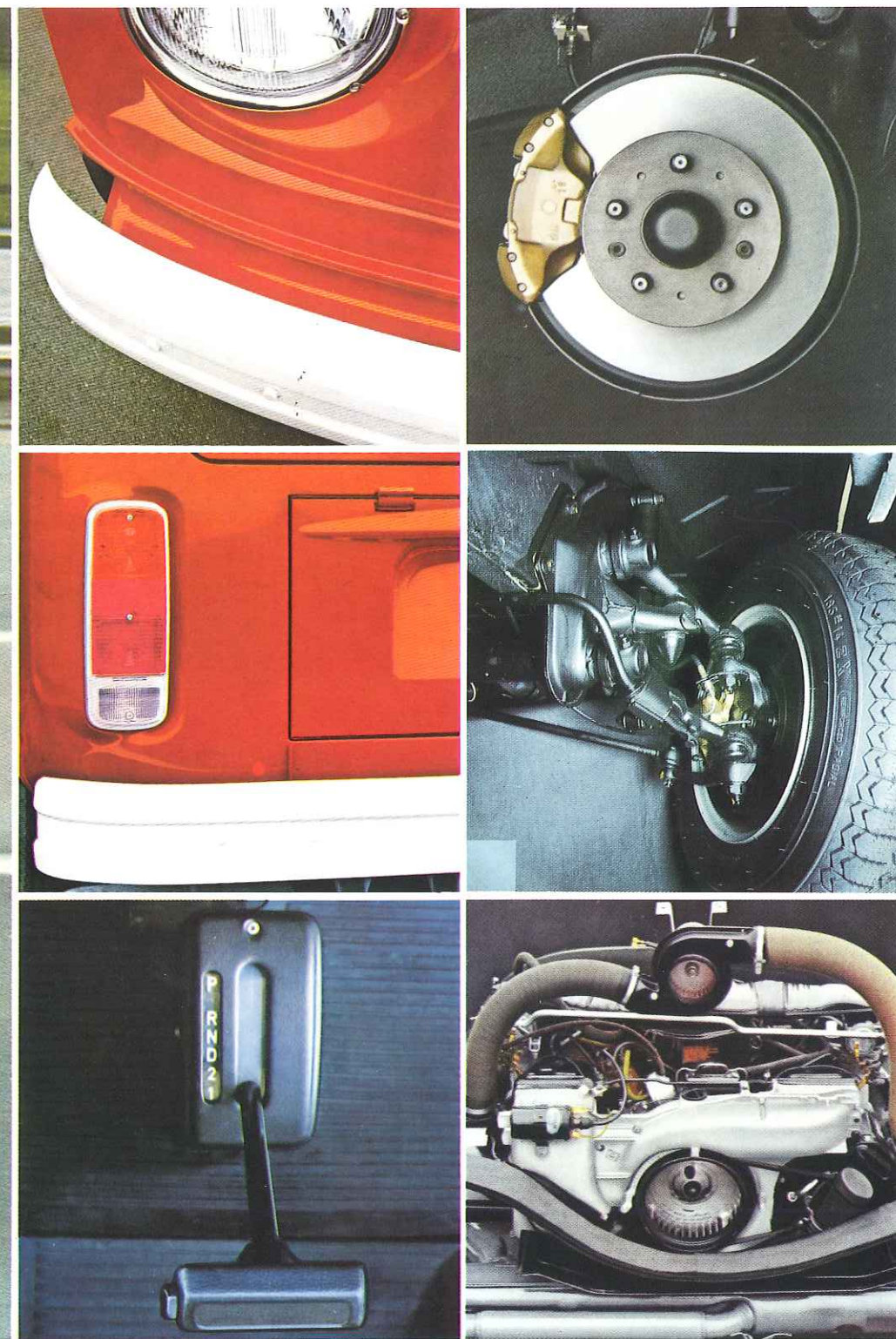
One thing you'll notice when you take the driver's seat: you'll be surprised how soon you forget you are handling a commercial. Because the VW Microbus offers you all the luxury of a saloon: a comfortably upholstered driver's seat which is adjustable (the backrest too). A clear, all-round view through 34 sq.ft. of window area.

And standard safety features like safety steering column, padded instrument panel with non-dazzle dials and padded sun vizors.

Passengers will note several things with pleasure. The easy access through the sliding side door which is self-arresting. Comfortable seats with shoulder-high backs and generous depth. And all the amenities of a regular saloon: good air—thanks to the individually adjustable

heating and ventilation system. The first-class sensation of travelling without luggage—thanks to the 35 cu.ft. of luggage space. The plastic interior trim. The insulating carpet on the floor. Plus numerous thoughtful details like coat hooks, grab handles, armrests and ashtrays—all so important on a longer trip.

In short, even the details of the VW Microbus are great.



Drive the VW Microbus – faster, more easily and, if you like, automatically.

This is quite new: The VW Microbus is now available with a more powerful 1.8 liter engine. It is not only faster (its 65 bhp SAE net give it a top speed of 79 mph) but more responsive too. The more powerful, highly resilient engine gives it the acceleration of a passenger car. Which makes it safer too.

Not quite so new is the fact that the VW Micro-

bus is also available with VW's successful automatic transmission (in the 1.8 liter version). That's been available for the past year. It makes driving easier and safer and makes the VW Microbus even more of a passenger saloon—particularly welcome in a car that does most of its work in city traffic.

And for years now the VW Microbus has had

its rugged chassis with the outstanding road holding that comes from its individual wheel suspension, trailing wishbone rear axle and transverse stabilizer, (again making for greater safety). There's the axle load ratio which stays constant even when carrying full payload. And the torsion bar springing for the wheels. Particularly safe responsive steering (with safety steering

wheel and steering column) and the dual circuit brake system (with disc brakes in front, brake pressure limiter and—in the 1.8 liter version—brake servo).

All this gives the VW Microbus its great margin of safety. And you the assurance that you can not only drive it fast and easily but brake it fast and easily too.



Choose the VW Microbus – with seven or eight or nine seats, standard or de luxe.

Strictly speaking, the VW Microbus is an eight-seater. But for a slight difference in the price, it is also available as a nine or eight-seater. In the standard or in the de luxe version. It all depends on how many passengers you want to carry and on how comfortable you want to make them.

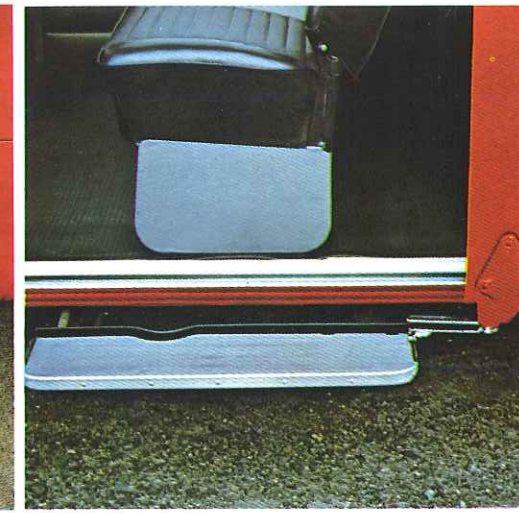
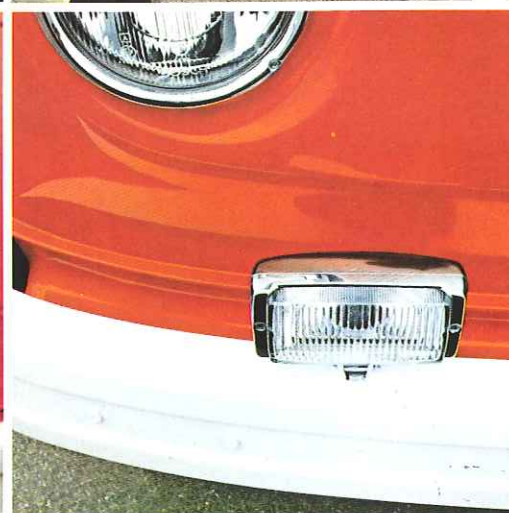
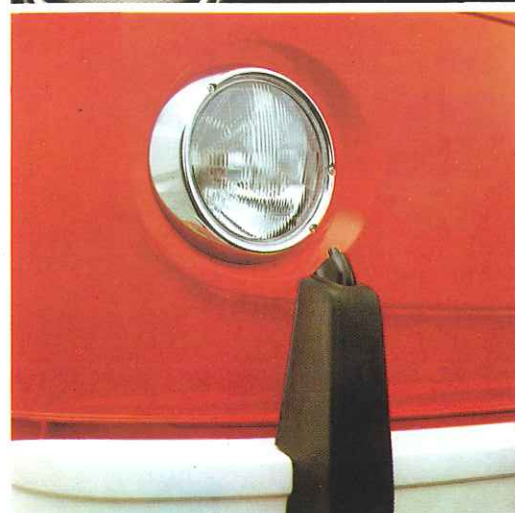
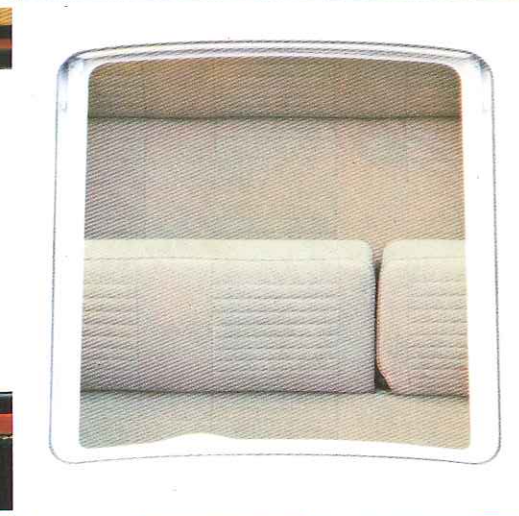
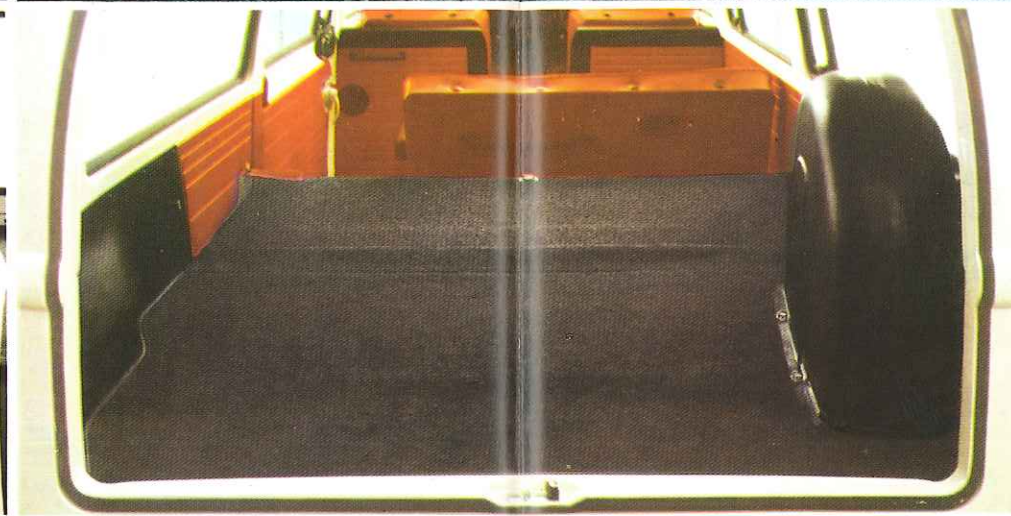
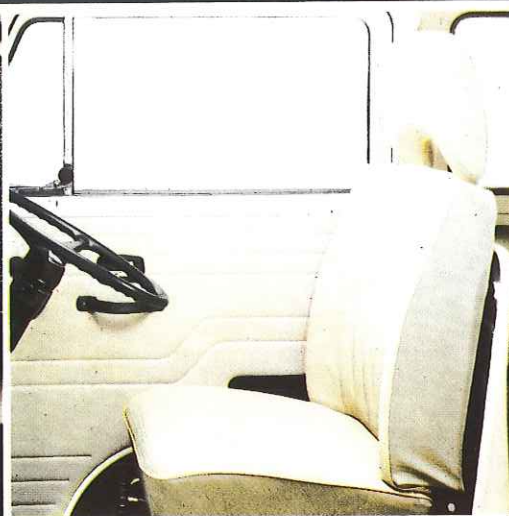
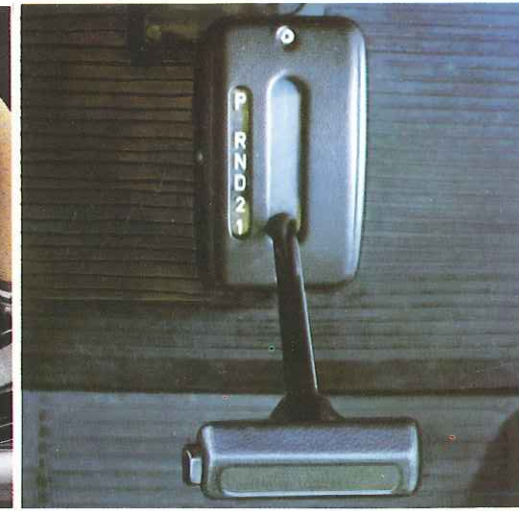
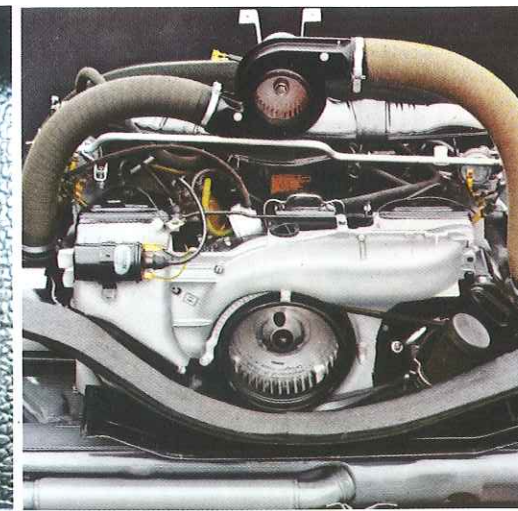
The seven and nine seat versions differ only in the seating arrangements (2-2-3 or 3-3-3 instead of 2-3-3 or 3-2-3). The differences in the L version are more substantial. It is even smarter outside, for one, with the all-round moulding with rubber profile, with the two-colour paint job, with the rubber strips on the chrome bum-

pers (useful too), with the polished window trim, with the bright chrome VW sign, with the radial ply tyres and two back-up lights.

And there's even more comfort inside: with trip mileage recorder and electric clock, with the vent wings in the cab doors, carpeting in the luggage compartment, with the sun vizor with

vanity mirror, with two additional coat hooks, with side trim mouldings and with polished window bars on rear window.

In short, the luxury benefits driver and passengers alike.



Choose the VW Microbus – in a special version with many extras.

By extras we mean the many fine and useful features we've developed for your VW Microbus to make your driving and your work even safer and more convenient. Particularly if you're on the road in all weathers.

When you are ordering your VW Microbus just specify how much more luxury safety you'd like to have: then all these extras will be installed not only expertly but also at a very reasonable price.

For instance, trip mileage recorder, rubber strips on the bumpers, vent wings in the cab windows, 2 reversing lights, and an electric clock (all of which are standard on the "L" Microbus.)

For all all-weather drivers we provide a Bad Weather Package: intermittent wiper operation setting with wipe-wash setting, halogen fog lamps and rear fog light.

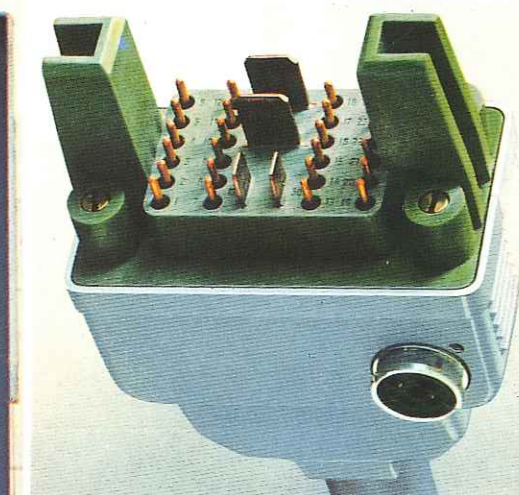
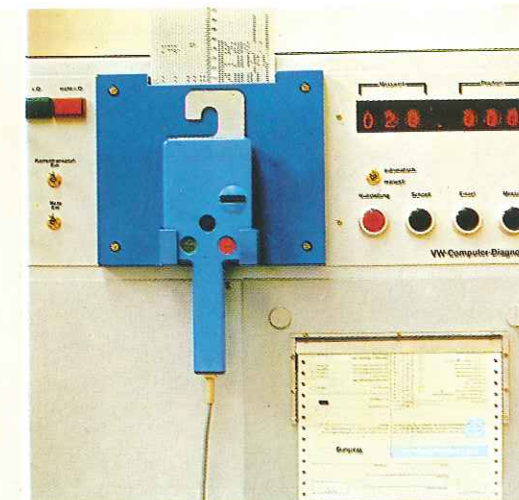
There are a lot of other extras for you to choose from as your fancy and your purse dic-

tate. A padded instrument panel. A footboard which automatically moves into place when the sliding door is opened, to facilitate entry and exit. Head restraints.

Of course, there are the more powerful 1.8 liter engine and automatic transmission. Four different radio models ranging from simple to sophisticated are also available for the VW Microbus. Plus heated rear window and radial ply tyres (which are standard on "L" and all

1.8 liter models). Other extras you can't see here include two fresh air blowers and the stationary and auxiliary heater.

On the page with the technical data and equipment for the VW Microbus you will find everything given in detail and arranged for easy reference.



Own the VW Microbus – and with it the famous VW Diagnosis.

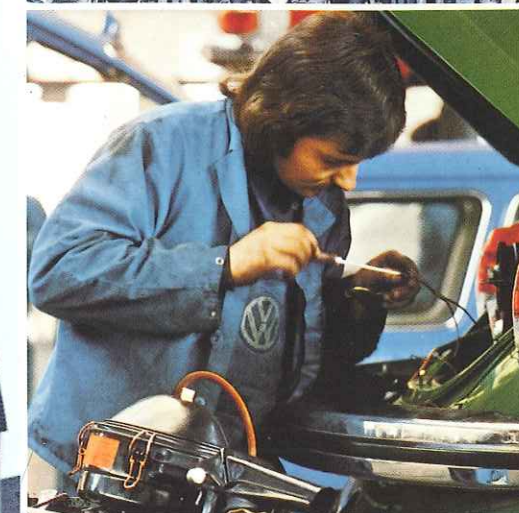
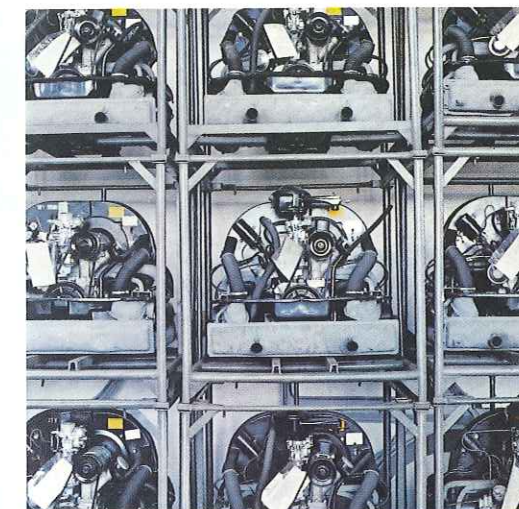
Before the VW diagnosis existed almost every car in the world was being inspected and serviced according to certain rules. Better than nothing of course. But not enough.

That's why VW developed the diagnosis and introduced it around the world. So that all Volkswagen cars could be checked with the very same system and the very same accuracy.

The VW Diagnosis furnishes you with exact data about your car's health. All tests and checks are carried out by means of special electronic

appliances, and when they're completed, a diagnosis report tells you just how healthy your VW is—down to the smallest detail: motor, chassis, axles, brakes, electric system, etc. And more reliably than ever before. Parts will no longer be replaced at a mechanic's pleasure, but only if a test instrument says it's necessary.

Recently VW began using the computer for diagnosis. The VW Computer Diagnosis is a technical revolution in car servicing. And the kind of progress you'd expect from VW.



Own the VW Microbus – and with it the famous VW Service.

To own a car from VW has always been something special. Because each and every VW is backed by the experience and efficiency of a world-wide organization operating in more than 140 countries, following the same meticulous VW rules.

VW quality

It is included with each and every VW. It stands for top craftsmanship in production and

extreme accuracy in inspection. Before it's allowed to leave the factory, every VW is subjected to the critical scrutiny of 8655 inspectors who in turn are checked by 550 inspectors. This insistence on attention to detail is what makes your VW so tough and reliable. And why it maintains such a high resale value, if ever the time comes when you want to sell.

The proverbial VW quality comes not only

with new VW's but with genuine VW accessories too. VW is always VW after all.

VW Service

Volkswagens—the very cars which generally need less servicing than others—have one of the densest and most extensive service networks in the world at their disposal: VW Service combined with VW Quality. With genuine VW Spare Parts that are inspected and checked as strictly

as any VW car. And guaranteed the same way. This includes checked repair hours and perfect maintenance—at the famous VW bargain prices. This sort of a check of your VW guarantees reliability: through the famous VW Diagnosis. Thus, errors will be almost completely eliminated.

Don't you find so much service a big advantage?



Love the VW Microbus – because it is so kind to people.

The VW Microbus has many appealing aspects. Passengers appreciate the fact that they can get in and out without acrobatics, sit uncramped and at ease watching the scenery pass by. They like the attractively appointed interior with ashtrays within easy reach, coat hooks, grab handles—in short, all the details that con-

tribute to the comfort of a touring saloon.

Its owner appreciates its reasonable price and the fact that it is so economical to run, needs no outsize garage and no special driving license for its driver.

And the fact that it really labours for ten: the driver, the eight passengers and the owner.

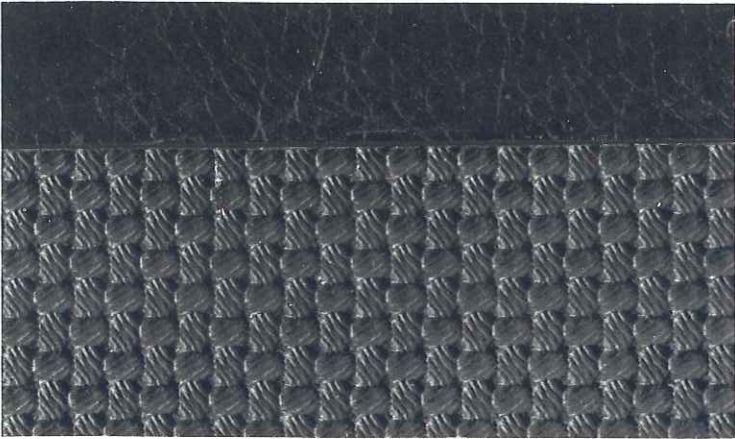
Buy the VW Microbus – the model that's just right for you.

Models	Engine and electrical system	Transmission	Running gear	Performance	Weights and dimensions	Special features of equipment	Optional extras at extra charge
VW Microbus 1.6 liter	Air-cooled, four cylinder, four-stroke flat four rear mounted engine. Capacity: 1.6 liter (1584 cc). Bore x stroke 85.5 x 69 mm. Output: 37 kW ¹⁾ at 4000 1/min ¹⁾ . (DIN/SAE net 50/48 bhp at 4000 rpm). Compression ratio: 7.5:1. Maximum torque 108 Nm ¹⁾ at 2800 1/min. (DIN/SAE net 10.8/74.5 mkg/lbs.ft. at 2800 rpm). Single down-draft carburettor with automatic choke. Thermostatically controlled fan air cooling. Oil cooler. 12-volt electrical system. 45 Ah battery. Alternator with max. output of 50 amp. (approx. 700 W.).	Via clutch, full baulk-synchromesh four-speed gearbox, differential and double-joint drive shafts to rear wheels.	Suspension by means of torsion bars front and rear combined with double-acting telescopic shock absorbers. Wheel suspension and location by means of cranked trailing links up front and semi-trailing arms at back. Torsion-bar stabilizer on front axle. Hydraulic steering damper and safety steering column. Dual-circuit brake system with disc brakes up front and deceleration-sensitive brake pressure regulator. Tyres: 7.00-14 8 PR; Microbus "L" models: 185 R 14 C (radial-ply).	Maximum speed 68 mph. (110 km/h). Optimum hill-climbing ability on good roads, fully laden and in first gear: 1:3.8 (26%). Consumption ²⁾ (regular fuel): 24.8 mpg imperial (11.4 l/100 km).	Wheelbase: 94.5 ins. (2400 mm). Track front/rear: 54.9/57.3 ins. (1395/1455 mm). Maximum external length/width/height: 177.4/67.7/77.0 ins. (4505/1720/1955 mm). Average length/width/height of passenger compartment, incl. luggage area: 110.2/59.5/55.1 ins. (2800/1512/1400 mm). Capacity approx. 177.0 cu.ft. (5 m ³). Average length/width/height: of luggage compartment 27.6/57.1/31.5 ins. (700/1450/800 mm). Capacity approx. 35.3 cu.ft. (1 m ³). Unladen weight: 2998 lbs. (1360 kg). Axle loads front/rear: 2227/2866 lbs. (1010/1300 kg). Permissible gross weight: 4960 lbs. (2250 kg). Max. permissible trailed load for braked trailers of all types: 1764 lbs. (800 kg). Max. roof load: 220 lbs. (100 kg). Differences of Microbus "L" models: Maximum external length/width/height: 178.9/69.3/76.4 ins. (4545/1760/1940 mm). Unladen weight: 3097 lbs. (1405 kg). Permissible gross weight: 5026 lbs. (2280 kg).	Two rear view mirrors. Steps below cab door. Safety door handles. Chromed hubcaps. Preservation of underside and wheel housings. Cab: Plastic-lined throughout. Floor lined with insulating rubber matting. Wheel housings damped with rubber. Further insulation and damping in cab. Driver's seat adjustable to nine positions, air flow adjustable in all directions even when vehicle is in motion. Passenger seat adjustable to two positions. Leatherette seat covers. Safety door locks. Coat hooks. Padded armrests. Door pull-to mouldings. Safety inside mirror. Ashtray. Grab handle for front seat passenger. Heating and ventilation systems adjustable over wide range. Adjustable draught-free ventilation system in the cab doors. Particularly effective windscreen defrosting. Glove compartment with flap. Two padded sun vizors. Screw-type mountings for safety belts. Windscreen washer. Headlight flasher. Automatic courtesy light. Hazard warning light system with automatic lane changer. Two-speed self-parking windscreen wipers with brief-wipe setting. Non-reflecting instrument panel padding. Fuel gauge. Access to passenger compartment. Passenger compartment: Seating configurations for 7, 8 and 9 seater versions as follows (from front to rear) at higher or lower price: a) 7-seater = 2-2-3, b) 8-seater = 2-3-3 or 3-2-3, c) 9-seater = 3-3-3. Plastic-lined throughout including window pillars and luggage area. Safety padding on rear wall of cab. Upper half of trim in cloud white. Entire floor damped with rubber matting. Passenger compartment carefully insulated as in cab. Two comfortable plastic covered bench seats. Safety armrests. Flexible assist straps. Coat hooks. Ashtrays. Courtesy light. Hot air outlets in front of and below front bench seat. Two individually adjustable swivelling, adjustable-flow fresh air vents. Screw-type mountings for safety belts. Roof-high luggage compartment, accessible from inside and out. Additional on "L" models: Pastel white roof and upper body in conjunction with all paintwork colours except white. Chrome VW sign. Chrome bumper bars with rubber profile. Wrap-around trim moulding with rubber profile. Window frames and vent wing frames polished and anodized. Twin reversing lights. Radial ply tyres. Vent wings in cab doors. Clock. Trip mileage recorder. Vanity mirror in passenger sun-vizor. Two additional coat hooks. Aluminium foot-board at sliding side door. Side trim mouldings. Chromed rear window protection bars. Carpeting in luggage compartment.	For all models: Headlight washing system with jets in bumper bar overriders. Halogen headlights. Two-tone paintwork (standard on "L" models). Steel sliding roof. Laminated windscreen. Tinted laminated windscreen for protection against sunlight. Tinted glass in other windows for sunlight protection. Second sliding door. Automatically operated footboard under sliding door. Two convex outside mirrors. Lockable tank flap. Heatable rear window. Twin reversing lights. Rear mudflaps. Towing attachment. Anti-corrosion treatment for body cavities. Reinforced shock absorbers. Automatic transmission (only in conjunction with 1.8 liter engine). Radial ply tyres (standard on 1.8 liter and "L" models). Brake servo (standard on 1.8 liter models). Day/night rear view mirror. Additional instrument panel padding. Lockable glovebox. Head restraints for all seats. Safety belts for all seats. Foldable rear backrest to increase luggage space. Stationary and auxiliary heater. Warning light for dual circuit brake failure with handbrake warning light. Complete radio system (various models). Fresh air blower. Cloth upholstery instead of leatherette seat covers. Trip mileage recorder. Rubber strips on bumpers. Vent wings in the cab doors. Twin reversing lights. Electric clock. Bad-weather Package, comprising: Windscreen wiper with intermittent operation setting and wash-wipe setting. Halogen foglamps. Rear foglamp.
VW Microbus 1.8 liter	Air-cooled, four-cylinder, four stroke flat four, rear mounted engine. Capacity: 1.8 liter (1795 cc). Bore x stroke 93 x 66 mm. Output: 50 kW ¹⁾ at 4100 1/min. (DIN/SAE net 68/65 bhp at 4200 rpm.). Compression ratio 7.3:1. Maximum torque 132 Nm ¹⁾ at 3000 1/min. (DIN/SAE net 13.2/91.0 mkg/lbs.ft. at 3000 rpm). Twin downdraft carburettors with automatic choke. Thermostatically controlled fan air cooling. Oil cooled. 12-volt electrical system. 45 Ah battery. Alternator with output of 55 amp. (approx. 770 W.).	Via clutch, full-baulk-synchromesh four-speed gearbox, differential and double-joint drive shafts to rear wheels. Optional at extra charge: automatic transmission with hydrodynamic torque converter and automatic three-speed epicyclic gears.	Suspension by means of torsion bars front and rear combined with double-acting telescopic shock absorbers. Wheel suspension and location by means of cranked trailing links up front and semi-trailing arms at back. Torsion-bar stabilizer on front axle. Hydraulic steering damper and safety steering column. Dual-circuit brake system with disc brakes up front and deceleration-sensitive brake pressure regulator. Tyres: 185 R 14 C Microbus "L" models 185 SR 14 reinforced (radial ply).	Maximum speed 79 mph (127 km/h). Optimum hill-climbing ability on good roads, fully laden and in first gear 1:3.5 (28.6%). Consumption ²⁾ (regular fuel) 21.8 mpg imp. (100 km/h.). Automatic models: Maximum speed 75.5 mph (122 km/h). Optimum climbing ability on good roads fully laden, forward 1:4 (25.0%). Consumption ²⁾ (regular fuel) 21.8 mpg imp. (12.9 l/100 km/h). No trailer permissible.	As on the 1.6 liter version, but unladen weight: 3042 lbs. (1380 kg). Differences for Microbus "L" models: Maximum external length/width/height: 178.9/69.3/76.4 ins. (4545/1760/1940 mm). Unladen weight: 3141 lbs. (1425 kg). Permissible gross weight: 5026 lbs. (2280 kg).		

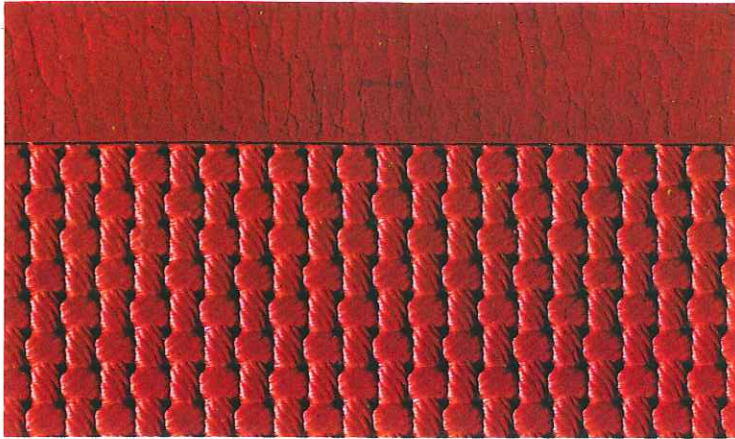
¹⁾ New unit for indication of engine output and maximum torque in accordance with international agreements.
²⁾ With half payload at steady 3/4 of top speed, plus 10 %.

Buy the VW Microbus – pick the colours that suit you best.

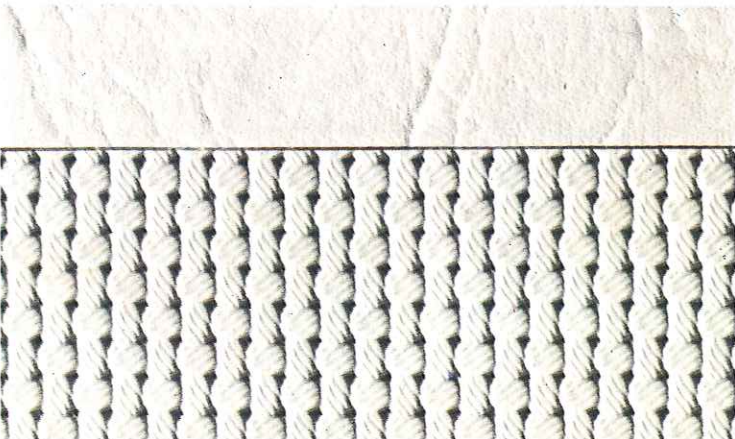
Leatherette upholstery.



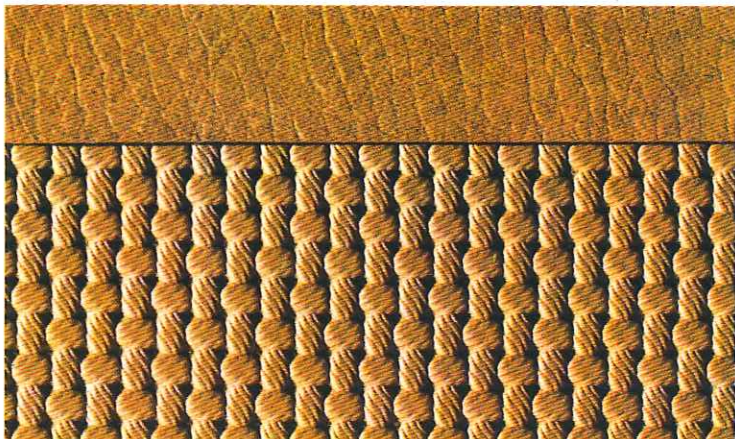
black -- 50



gala red -- 60

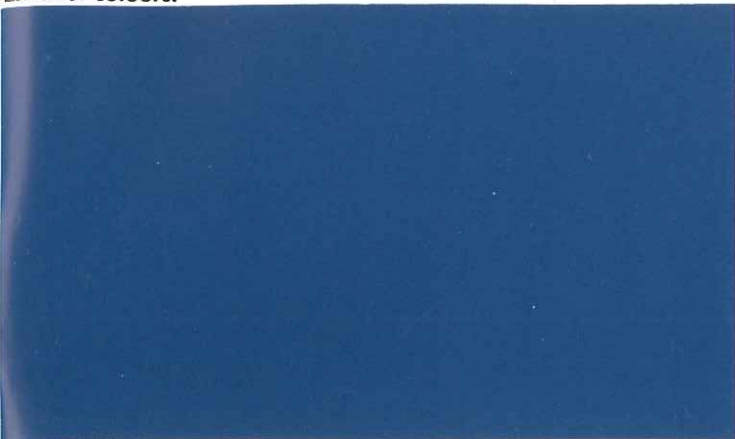


alabaster -- 52

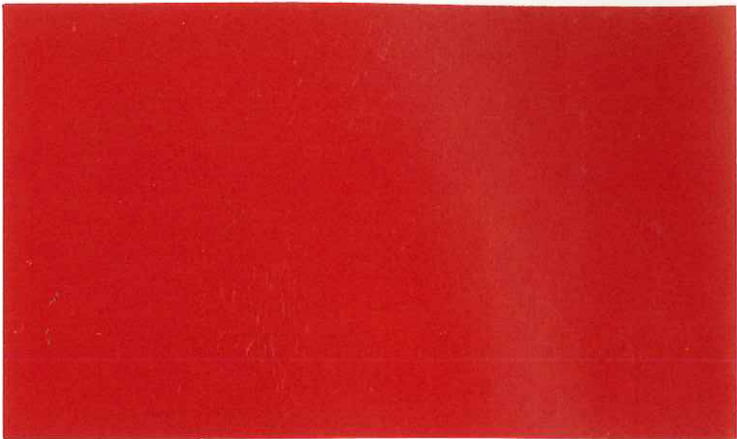


leather beige -- 55

Exterior colours.



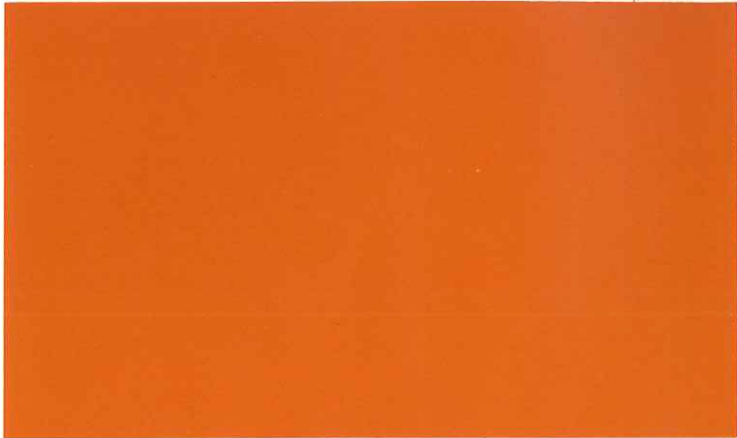
orient blue J2J2 –



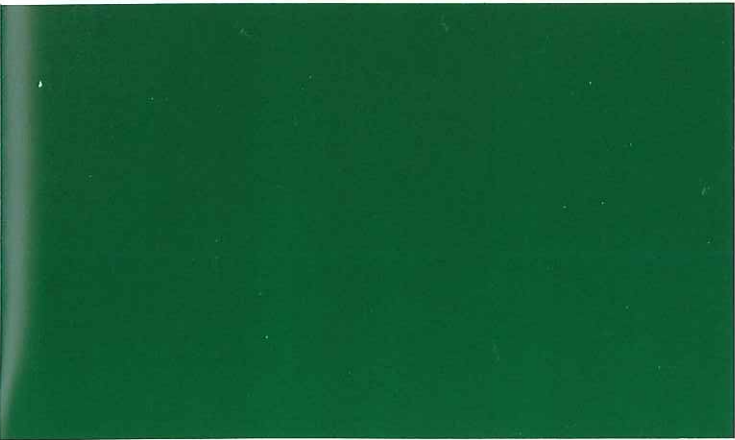
kasan red GIG1 –



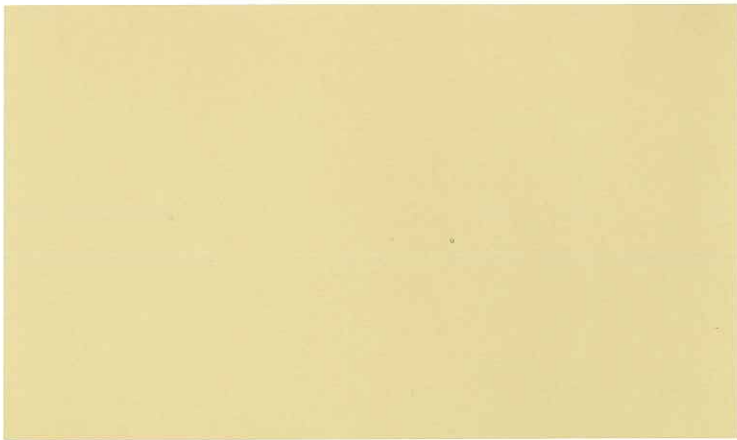
pastel white R1R1 –



brilliant orange EIE1 –



sumatra green M4M4 –



ceylon beige DID1 –

		VW Microbus/ Microbus L					
		Exterior colours					
Upholstery		orient blue	kasan red	pastel white	brilliant orange	sumatra green	ceylon beige
Leatherette	black	-- 50					
	gala red	-- 60					
	alabaster	-- 52					
	leather beige	-- 55					
Roof colour							
	pastel white	- R1 -					

The pastel white roof finish is standard on the "L"-models and available at extra cost on the ordinary Microbus models.

Ask for a test drive.

Volkswagens are delivered to 140 countries the world over. Obviously, traffic laws and type-approval regulations tend to vary from country to country. You may find, therefore, that the models and equipment actually offered for sale differ from the data given in this brochure. So please ask your nearest VW dealer for information regarding the wide range of VW models and equipment valid for your country.