

2017

Jetta GLI



Volkswagen

Exceptional exists for
less than you think.



From only \$36,740.*

*Base MSRP of a new and unregistered 2017 Jetta GLI 2.0 TSI® with 6-speed manual transmission is \$36,740, \$1,645 freight and PDI and \$100 a/c levy included. Licence, insurance, registration, options, any dealer or other changes and applicable taxes are extra. Dealer may sell for less.

When you've got the soul of a race-car driver, there's only one thing you crave: the thrill of the drive. The 2017 Jetta GLI delivers at a price that will surely excite you. 210 horses come to life at a moment's notice. A 6-speed transmission (automatic or manual) lets you power out of curves. And sport-tuned suspension keeps the road-feel just right.

Performance

There's a lot of engine under the hood. Throw a few revs its way and watch out. Responsive and agile, this is one car that wants to be pushed to the limit.

Design & interior

We like to say the styling is assertive, not aggressive. A rock star without all that bling. And inside, it's got comfort and finesse for a more discerning clientele.

Technology

Having the right technology can really up your cool factor. We keep the "wow" factor going non-stop with a ton of exceptional technology.

Intelligent life

We packed the 2017 Jetta GLI with plenty of technology so you can stay connected to your busy world – or not, depending on your mood. Either way, your favourite song is going to sound spectacular.



Fender® Premium Audio System

The 8-speaker system will have you feeling like you've got the best seat in the house. Or in this case, the best seat on the road.

Speakers shown for information only. Actual speakers vary in shape and size.



Bi-Xenon headlights with Adaptive Front-light System

Lights that can handle corners as well as you? Yup. These advanced headlights turn up to 13 degrees around corners before you do. They're also brighter, longer lasting and more energy efficient than conventional bulbs.

Park Distance Control*

Backing up to within mere centimetres of a wall is impressive. And easy, thanks to sensors that emit a beeping sound that gets faster and faster the closer you get to a solid object.

* Driver assistance feature. Drivers must continue to perform manual checks before proceeding and pay full attention to the road.

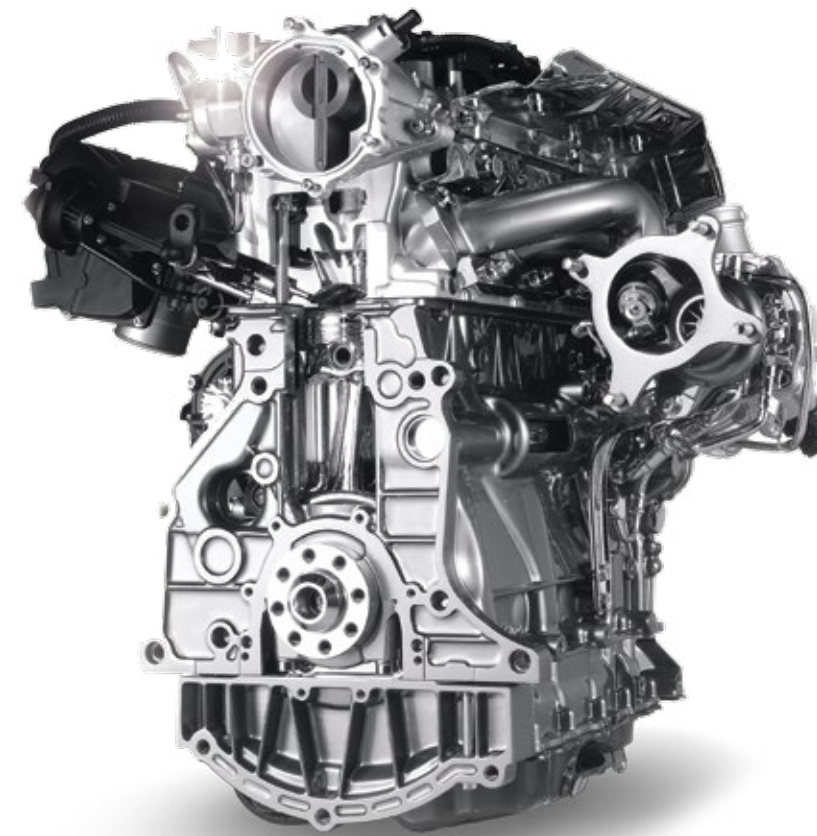
Get driving gloves.

You'll want a good grip on the wheel as you let all 210 horses loose and make short work of those twists and turns. It's power you'll also appreciate when the terrain gets hilly and you don't want to skip a beat.



Sport suspension with XDS (Cross Differential System)

Enjoy the drive. More safely. XDS grips the road better when cornering fast by reacting quicker to changes in the road surface and helping prevent wheel spin. You'll benefit from a more agile and precise driving experience.



Powerful 2.0 TSI[®] engine with 210 HP and 207 lb-ft of torque

When you combine direct injection with a turbocharger you get TSI. For you that means instant acceleration so you can power up hills and through turns. It also means the 2017 Jetta GLI is amazingly fuel efficient.

Available 6-speed automatic DSG[®] with Tiptronic[®]

Paddle shifters on the steering wheel let you override the automatic transmission and truly take command of your drive, without the clutch-pushing part. Makes quick work of hills and tight corners.

Fuel Consumption*	Engine	City L/100 km	Highway L/100 km
Manual	2.0 TSI*	10.2	7.2
Automatic DSG*	2.0 TSI*	9.9	7.2

*Fuel consumption figures are estimates based on Natural Resources Canada's approved criteria and testing methods. Your fuel consumption will vary.

If looks could thrill.

The 2017 Jetta GLI is one serious performance car that was designed with true driving enthusiasts in mind. You'll notice the difference from your first glance – to the moment at the end of the day, when you say to yourself, "that was awesome."

Sport instrument cluster with colour multifunction status display*

Get all the important information you need front and centre and at a glance so you can pay close attention to the road ahead.



GLI badging and trim

From the distinctive front fascia with black honeycomb grille and red trim, to the integrated rear spoiler and chrome exhaust tips – the 2017 Jetta GLI says loud and clear, "I'm here."

Distinctive red brake calipers

Our red painted brake calipers make you look fast even when you're standing still. The irony isn't lost on us.



Passion play.

From the sport bucket seats, to the race-styled flat-bottom steering wheel, to the aluminum sport pedals, every detail lets you know you're taking control of a true sports car. Enjoy every moment.

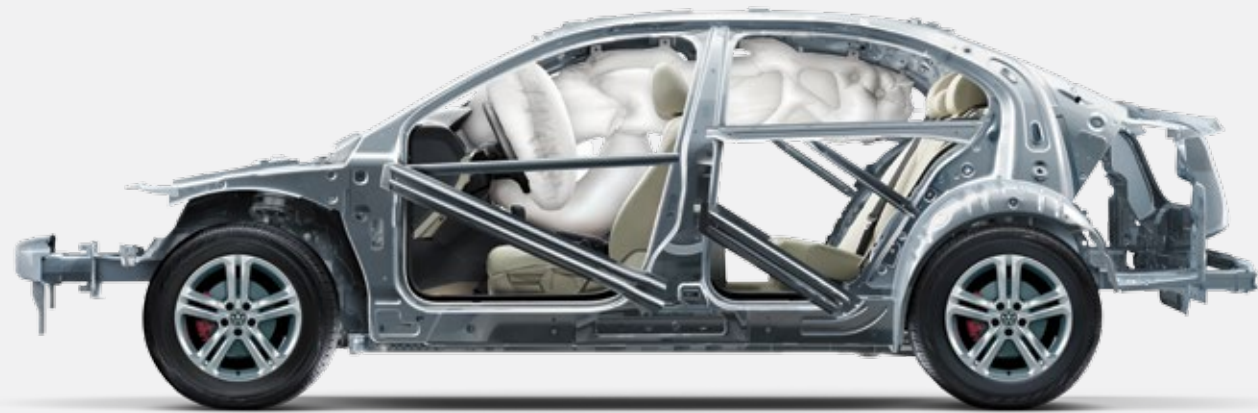
Customizable ambient interior lighting

Add a true level of customization after the sun sets. Ambient LED lighting in the door handles, foot wells and centre console adds a dash of sophistication and helps you find things more easily.

Blacked-out headliner and pillar

The black headliner adds a sleek, professional look while also giving the driver the sense of not just being in the perfect vehicle, but being part of it.

Tough on safety.



Dramatization.*

Any car that takes performance seriously should also put a huge premium on safety. The 2017 Jetta GLI does just that. From advanced technologies like Blind Spot Detection to all-encompassing airbags, we've gone to the extreme to help make sure you'll be safe out there.



Blind Spot Detection with Rear Traffic Alert*

Be certain of your surroundings at all times. Radar sensors trigger a blinking symbol on your side mirrors that warns you when an object enters your blind spot.

Safety cage

It's hidden within the structure of the car, but it's not something you'd want to be without in the event of a collision. The safety-optimized cage helps reduce the severity of an impact and minimize harm to everyone in the passenger compartment.



Intelligent Crash Response System (ICRS)**

Looking out for you when you need it most, this automatic safety system disables the fuel pump, turns on the hazard lights and unlocks all doors in the event of a collision.

Rain-sensing wipers

Whether it's just a few drops or a downpour, the sensor knows what's happening on your windshield and automatically turns on the wipers at the correct speed or interval. It's ideal when big rigs pass you and throw up spray.



Auto-dimming interior rearview mirror

Enjoy a better driving experience at night with a mirror that automatically dims to eliminate those pesky glaring headlights shining in your eyes. Although it's unlikely you'll have many people coming up fast behind you.

*Not all airbags will deploy, and if multiple airbags do deploy, they will be in various stages of inflating/deflating.

*Driver assistance feature. Drivers must continue to perform manual checks before proceeding and pay full attention to the road.
**ICRS will only engage if an airbag is deployed or a safety belt tensioner fires.

Standard Wheels



18" Mallory alloy wheel

Exterior & Interior Colours

	Titan Black Vienna leather
Pure White	✓
Tornado Red	✓
Platinum Grey Metallic	✓
White Silver Metallic	✓
Deep Black Pearl	✓



Volkswagen Original Accessories

Ready for anything.
Custom-tailor your Jetta GLI.



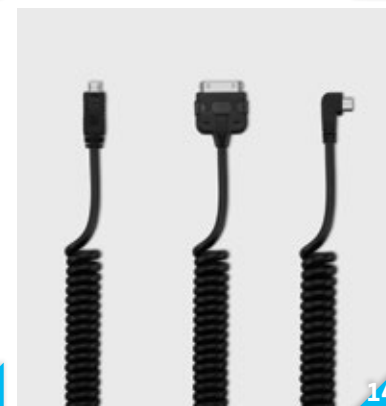
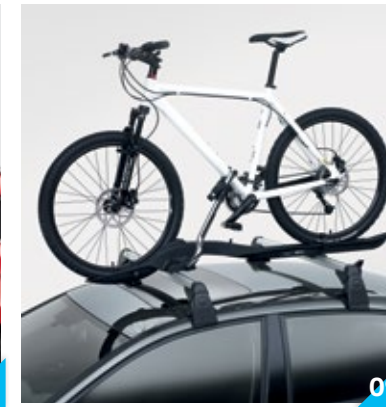
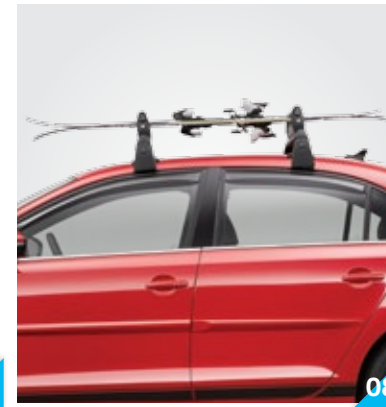
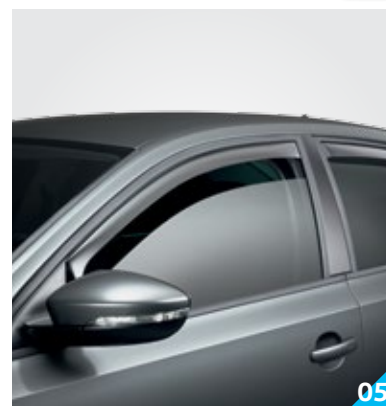
When it comes to accessorizing a Volkswagen, only the best will do. Built to the same quality standards we build our cars and SUVs to, our accessories are custom-fitted to each vehicle and designed to go the distance.

Many accessories can also be included in your lease and financing arrangements, and easily included in your payments to suit your needs.*

Volkswagen Original Accessories are protected by the new vehicle 4-year/80,000 km limited warranty if they're installed prior to vehicle delivery. Or if purchased afterwards, accessories qualify for the balance of the new vehicle warranty coverage or a 1-year/20,000 km limited warranty, whichever is greater.**

- 01 Monster Mats®**
High-quality all-season mats with rounded retention clip.
- 03 Sunroof air deflector**
Help reduce in-cabin wind noise and air turbulence with this sunroof air deflector.
- 05 Side window deflectors**
Help reduce in-cabin wind noise and air turbulence with these side window deflectors.

- 02 Jetta licence plate frame**
This licence plate frame is made from stainless steel and is engineered to look beautiful and last.
- 04 Lockable wheel bolts**
Help deter thieves with a set of locking wheel bolts.
- 06 Valve stem caps**
Set of four nickel-plated brass stem caps.



- 07 Base carrier bars**
Bring along your skis, snowboards, kayak, bikes or cargo boxes with the help of these base carrier bars.[†]
- 09 Bike holder attachment**
Rugged single-bike holder with built-in lock.
- 11 Cargo net**
Designed to prevent movement of cargo in your vehicle's trunk.

- 13 Splash guards**
Designed for a flush contour fit, these splash guards help protect your vehicle against road debris.

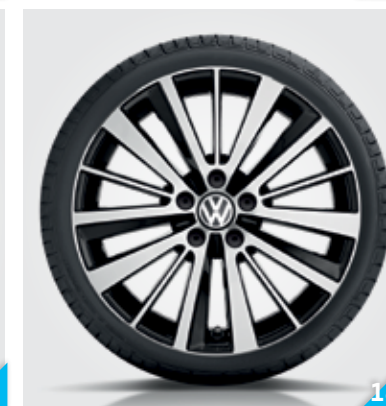
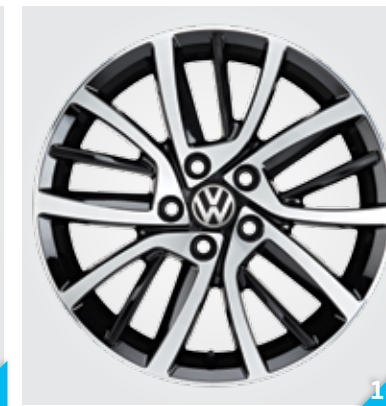
- 15 16" Corvara wheel**
The 16-inch Corvara wheel in brilliant silver features a striking five-spoke design that complements your vehicle.

- 17 18" Rotary wheel**
Give your vehicle a modern race-inspired sporty look with Rotary wheels finished in dark anthracite.

- 14 Digital media adapter cables**
Our digital media adapter cables let you connect compatible devices to your Volkswagen so you can play music and charge on the go.

- 16 17" Blade wheel – black and silver**
Five-spoke wheel featuring clean lines and diamond-cut accents.

- 18 18" Preston wheel**
The dynamic multi-spoke design of this wheel provides your vehicle with a new sporty appearance.



*Accessories must be dealer installed and approved by Volkswagen Finance. Certain conditions may apply. Contact your approved dealer for full details.
**Limited warranty is supplied by Volkswagen Group Canada Inc.

Availability of accessories shown is subject to change. Accessories may not fit all models.
[†]Separate attachments required to carry different types of items.
^{††}Number of items that can be carried will vary based on the size of each item.

Features

Jetta GLI Autobahn

Engines:

- 2.0 TSI® 210 HP, 6-speed manual transmission
- 2.0 TSI® 210 HP, 6-speed automatic DSG® with Tiptronic®
- Maximum torque: 207 lb-ft at 1,700–5,000 rpm

Includes from Jetta Wolfsburg Edition:

- 4-wheel ABS (Anti-lock Braking System)
- 60/40 split folding rear seats with centre armrest and pass-through
- Alarm system
- App-Connect smartphone integration (Android Auto™, Apple CarPlay™, MirrorLink™)
- Automatic headlights with coming and leaving home function
- Auxiliary input
- Bluetooth® mobile phone connectivity with voice activation control
- Body-coloured bumpers and door handles
- Climatronic® dual-zone electronic climate control
- Cooled glove box
- Cruise control
- Darkened tail lights
- Diversity antenna
- Driver & front passenger front & side airbags and front & rear Side Curtain Protection®
- Electronic Stability Control (ESC)
- Front and rear disc brakes
- Front and rear floor mats
- Front and rear reading lights
- Front centre armrest
- Heatable front seats and washer nozzles
- Height-adjustable and telescopic steering column
- KESSY – keyless access with push-start button
- Leatherette door inserts
- LED rear licence plate illumination
- LED signature daytime running lights
- Multifunction trip computer
- Multi-link rear suspension
- Power adjustable, heatable, body-coloured exterior mirrors with turn signals
- Power door locks
- Power sunroof
- Power windows
- Rain-sensing wipers
- Rear seat head restraints for all seating positions
- Rear spoiler
- Rearview camera
- Remote central locking system
- SiriusXM® Satellite Radio
- Soft-touch dashboard
- Sunglasses holder
- USB audio input
- Vehicle immobilizer

Jetta GLI Autobahn adds the following:

- 18" Mallory alloy wheels with all-season tires
- 6-way power driver sport seat with manual lumbar support
- Aluminum sport pedals
- Ambient interior lighting
- Auto-dimming interior rearview mirror
- Bi-Xenon headlights with Adaptive Front-light System (AFS)
- Black headliner and pillar covering
- Blind Spot Detection with Rear Traffic Alert
- Chrome exhaust covering
- Cross Differential System (XDS)
- Décor insert: Carbon Optik
- Discover Media – 6.33" touchscreen infotainment system with proximity sensor, voice control, CD player, satellite navigation and 2 SD card slots
- Door sill plates
- DSG® paddle shifters (with automatic transmission)
- Fender® Premium Audio System – 8 speakers plus subwoofer
- Front fog lights
- GLI badge
- Hill Hold Assist
- HomeLink®
- Leather seating surfaces
- Multifunction GLI sport steering wheel
- Park Distance Control (PDC)
- Premium instrument cluster with multifunction colour display
- Red brake calipers
- Sport suspension
- Unique GLI front bumper and grille





© 2016 Volkswagen Canada. Items, specifications, availability, standard features, options, fabrics and colours are subject to change without notice. Volkswagen Canada is not responsible for errors in typography or photography. Some features may be unavailable when your vehicle is built or available at extra cost. Although we endeavour to ensure that the information is accurate, as errors may occur from time to time, customers should contact their local Volkswagen dealer for details. Tires are supplied and warranted by their manufacturer. The vehicle is sold equipped with four all-season tires. However, please remember that the use of winter tires may be mandatory in your province or territory. Airbags are supplemental restraints only and will not deploy under all accident scenarios. Always use safety belts and seat children only in the rear seats, using restraint systems appropriate for their size and age. The navigation system depends upon signals from the GPS network and is designed to provide you with suggested routes only. Discrepancies may occur between the mapping and the actual location due to changes in street names, construction or other road system changes which are beyond the control of Volkswagen Canada. Please rely on your individual judgment in determining whether or not to follow a suggested navigation route. Fuel consumption ratings are estimates based on Natural Resources Canada's (NRCan) fuel consumption criteria and testing methods for 2017 model year vehicles and are provided for comparison purposes only. Please note that comparisons to seemingly similar vehicles pre-2015 model year will show discrepancies due to the difference in NRCan approved calculation methods for 2014 model year and older vehicles. Please refer to NRCan's Fuel Consumption Guide 2017 for estimated fuel consumption figures. Actual fuel consumption will vary based on driving conditions, driver habits and the vehicle's condition, weight carried and additional equipment. "Jetta", "Climatronic", "DSG", "TSI", "Wolfsburg Edition", "Volkswagen" and the Volkswagen logo are registered trademarks of Volkswagen AG. "Monster Mats" and "Side Curtain Protection" are registered trademarks of Volkswagen Group Canada Inc. The Bluetooth word mark and logos are registered trademarks of Bluetooth SIG, Inc. "SiriusXM", the SiriusXM logo, channel names and logos are trademarks of Sirius XM Radio Inc. and are used under licence. "Fender" is a registered trademark of Fender Musical Instruments Corporation. "Tiptronic" is a registered trademark of Dr. Ing. h.c. F. Porsche AG. "HomeLink" is a registered trademark of Johnson Controls Technology Company. "Android Auto" and "Google" are trademarks of Google Inc. "CarPlay" and "Apple" are trademarks of Apple Inc. "MirrorLink" is a trademark of Car Connectivity Consortium LLC. For further information regarding any Volkswagen model, please call 1-800 DRIVE VW or just look us up at vw.ca. Before we sign off, drive responsibly and obey the rules of the road. Version date: April 1, 2017.