

1959 Brochure for the Renault Dauphine.

In 1959 following the success the VW model Judson Superchargers for the Renault Dauphine and the Austin Healey Sprite were added to the range. This 4 page brochure includes performance figures from the "Road & Track" test of the same year.

JUDSON RESEARCH AND MFG. CO.

CONSHOHOCKEN, PENNSYLVANIA

SUPERCHARGERS

Dear Sir:

Here is complete information on the Judson Supercharger for the Renault Dauphine. As a Renault owner you are interested in more power and better performance. The Judson Supercharger with controlled manifold pressure will give this to you silently, dependably and without affecting the reliability of this dependable car in any way. Supercharging by improving the efficiency of the engine increases the horsepower by 50% with an increase in fuel consumption of less than 5%.

Imagine having lightning fast acceleration...having 50% more horsepower at your command...taking hills in high where you now shift gears...cruising along at a higher speed with less engine effort...shifting gears half as much in city traffic...the engine responding immediately to the touch of your foot on the accelerator. You can pass when you want to and have extra power when you need it. It is a new and exhilarating experience in driving.

The Judson Supercharger has been proven by over 50,000 supercharger installations throughout the world. It is manufactured by America's foremost supercharger manufacturer and is acknowledged by automotive engineers everywhere as the standard of quality and performance.

Examine the performance figures carefully. Note the difference between the supercharged and unsupercharged Renault Dauphine. You can get this amazing performance from your Renault Dauphine by supercharging with Judson. Supercharging gives you more than just improved performance, it gives you a thrilling new experience in motoring pleasure. A Judson Supercharger provides the kind of performance you need for American highway driving.

Complete installation instructions are furnished with every unit. No chassis or body modifications are required and the complete installation can be made in less than two hours. Everything is furnished with the installation and it is simply a matter of bolting the supercharger to the engine.

Install one of our superchargers on your Renault Dauphine. Try it yourself, if it is not all that we say it is and if you are not amazed and thrilled by the performance, return it for a full refund.

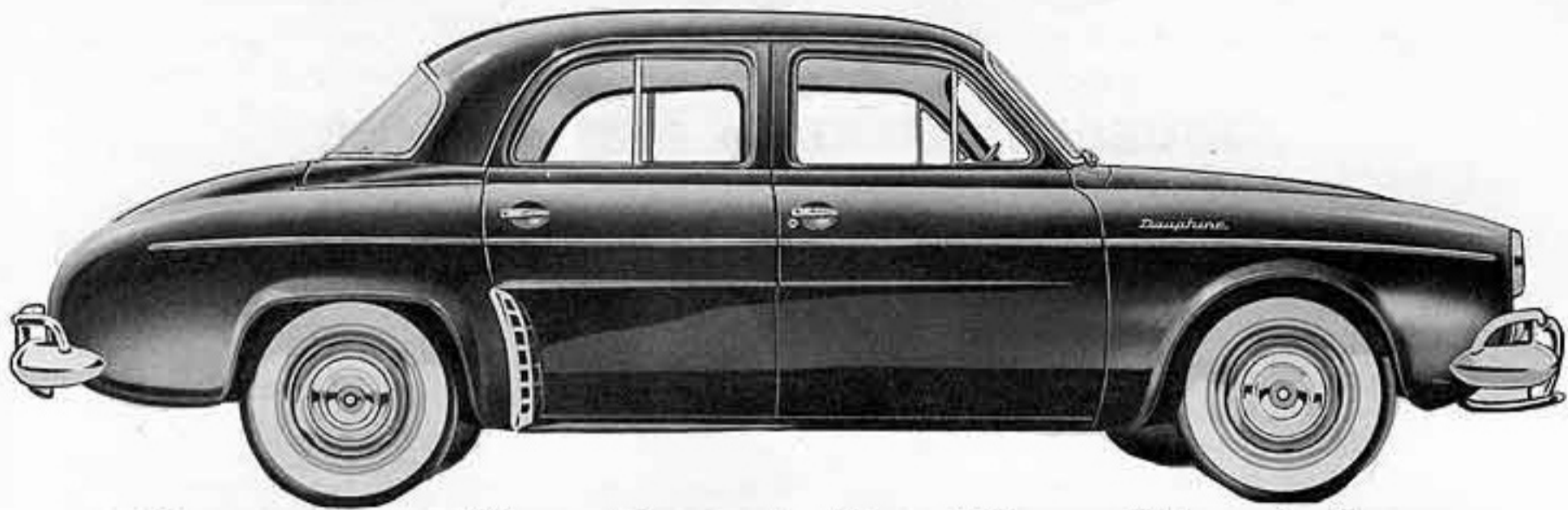
Get all the power out of your Renault Dauphine, power that you never realized was there. Order your Judson Supercharger today. It can be ordered directly from the factory or through better dealers everywhere. Satisfaction guaranteed.



Sincerely,

JUDSON RESEARCH & MFG. CO.

SPEEDWAY AUTOMOTIVE
3575 N.E. 8TH DR 3-00 7
AMARILLO, TEXAS



Supercharge Your Renault Dauphine with a Judson

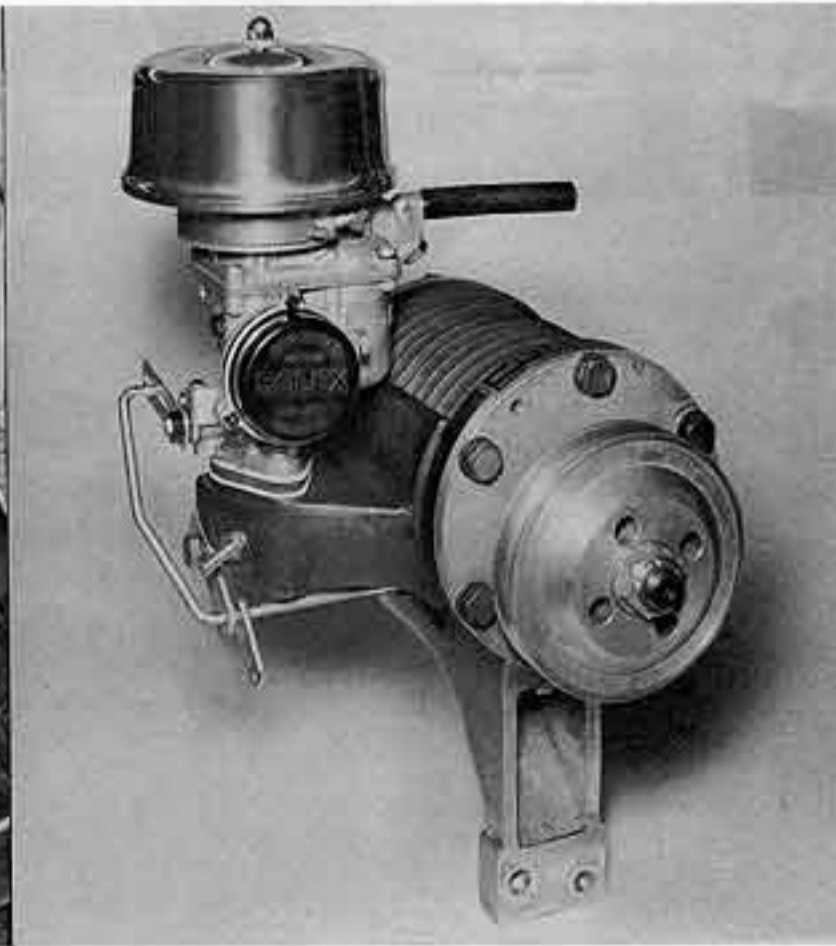
FOR AMAZING PERFORMANCE A NEW THRILL IN MOTORING PLEASURE

Experience a new thrill in driving your Renault Dauphine. Imagine having lightning fast acceleration, cruising along at a higher speed with less engine effort, shifting gears half as much in city traffic, maintaining your speed on the steepest of hills, having reserve power for any emergency, the engine responding immediately to the touch of your foot on the accelerator under any condition. A Judson Supercharger on your Renault will give you amazing and thrilling performance in any gear at any speed without sacrificing engine life or economy.

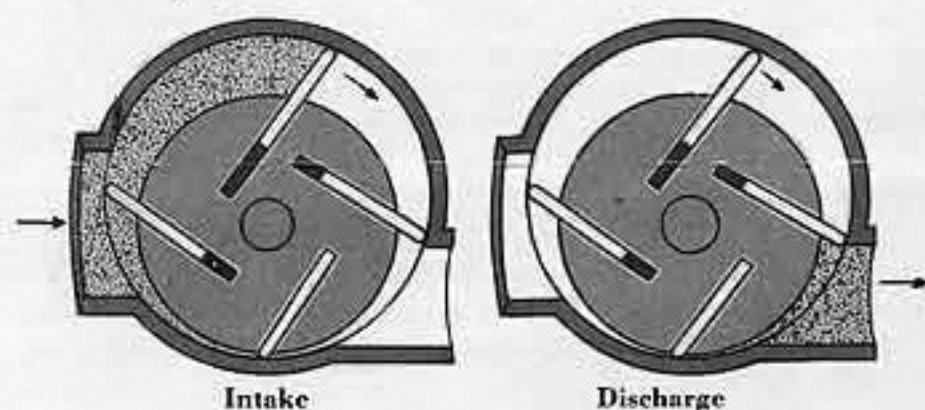
Supercharging gives your engine more power through increased torque. The power output of any engine is limited by its ability to take in air. Supercharging is a mechanical method of forcing the air-gas mixture into the cylinder instead of using the piston to suck it into the cylinder. A supercharger simply places more of the mixture behind each power stroke of the piston and thus increases the power of the engine. The cylinders on the supercharged

engine are always completely filled and each cylinder receives a uniform charge. Basically supercharging increases horsepower by improving the efficiency of the engine. A supercharger by allowing the engine to breathe more effectively permits the engine to do much more work with very little additional effort. Because of this improvement in engine efficiency practically all transcontinental trucks, buses, locomotives and airliners are supercharged.

The Judson Supercharger with controlled manifold pressure provides surging power, smoothly, dependably and silently. Here is a supercharger installation designed specifically for the Renault engine and engineered to improve performance in your every day driving. The difference in performance between the supercharged and unsupercharged Renault Dauphine is amazing and immediately apparent. It is just like adding two more cylinders to the engine.



The Judson Supercharger is a positive displacement rotary vane type unit. This is the principle used in most aircraft fuel pumps and many industrial compressors. The mixture enters the supercharger through the carburetor and is compressed. The pressurized mixture is then forced into the manifold and when the valve opens the full charge is waiting to enter the cylinder. It has no gears to wear, no highly stressed parts. The rotary vane type supercharger is noted for its high efficiency, long life and silence of operation. It delivers a fixed volume at each revolution making it effective at all engine speeds and automatically proportions the output to the requirements of the engine. The Judson operates at less than engine speed, temperature remains normal and the simple design eliminates maintenance problems.



The Judson Supercharger has been proven by thousands of miles of testing under varied conditions and is manufactured to give you years of dependable service. Utilizing the exclusive and patented principle of balanced pressure with non-metallic vanes it is efficient, dependable, silent and is subject to less wear than other accessories now on the engine. The supercharger has a positive lubrication system and clean oil is supplied to the unit from its own oil reservoir. One quart of oil is used in approximately one thousand miles and in addition to lubricating the supercharger, this oil acts as an upper cylinder lubricant further increasing the life and performance of the engine.

**get big car performance
with renauld dauphine
economy**

The performance of an automobile is not determined by horsepower alone but by the power to weight ratio (horsepower available per pound of automobile). A Judson Supercharger on your Renault Dauphine will increase the horsepower 50% and yet increases the weight of the car by less than twenty pounds. It is true that your supercharged Renault will not have as much horsepower as an American automobile but neither will it have as much weight. This increase in horsepower without an increase in weight raises the power to weight ratio to that of many American cars, enabling the supercharged Renault Dauphine to out-perform cars costing twice as much. The amazing improvement in performance is made possible by increased engine efficiencies and as a consequence the economy for which the Renault is noted is not sacrificed.

**50% MORE HORSEPOWER
GUARANTEED**



**RENAULT DAUPHINE
WITH JUDSON SUPERCHARGER**

PERFORMANCE DATA

Acceleration in seconds:	Unsupercharged	Supercharged
0 to 30 mph	7.2	4.5
0 to 40 mph	12.	7.
0 to 50 mph	18.	10.5
0 to 60 mph	31.	15.5
0 to 70 mph	71.	34.
Maximum speed	72	81
Maximum HP at rear wheels	22	36
Rear wheel HP @ 3000 rpm	21	34
Maximum engine brake HP (SAE)	32	50
Weight to power ratio	45	28
Fuel consumption, mpg	33/43	32/41
Noise level (Decibels)	48	48

SPECIFICATIONS

- TYPE — Rotary vane, positive displacement
- MANIFOLD BOOST PRESSURE — 6 lbs. per sq. in.
- DRIVE — "V" belt drive
- DRIVE RATIO — .96 to 1
- CARBURETION — Stock carburetor, revised jet
- LUBRICATION — Independent lubricator, uses ordinary motor oil, fed to intake inverse to vacuum
- AIR CLEANER — Special for supercharged induction
- DIMENSIONS — 5½" x 9" long
- WEIGHT — 16 lbs.

**YOU CAN GET THIS PERFORMANCE FROM
YOUR RENAULT DAUPHINE**

A Judson Supercharger cannot harm the engine in any way and the Renault is more than rugged enough to take low pressure supercharging without affecting its traditional economy and reliability. This increase in horsepower and improvement in performance is made available through increased torque, not increased engine speed. The engine develops more power at the same engine speed.

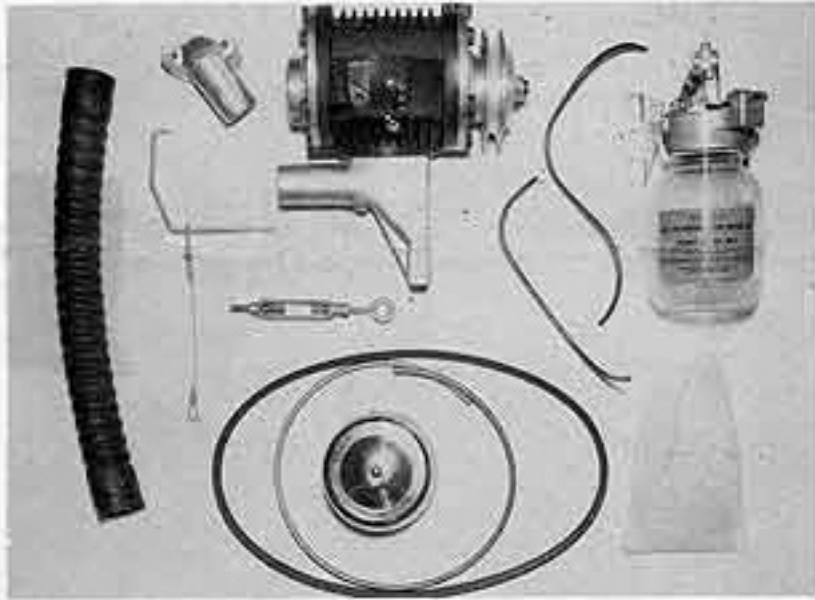
SATISFACTION GUARANTEED

EFFICIENT • DEPENDABLE • SILENT

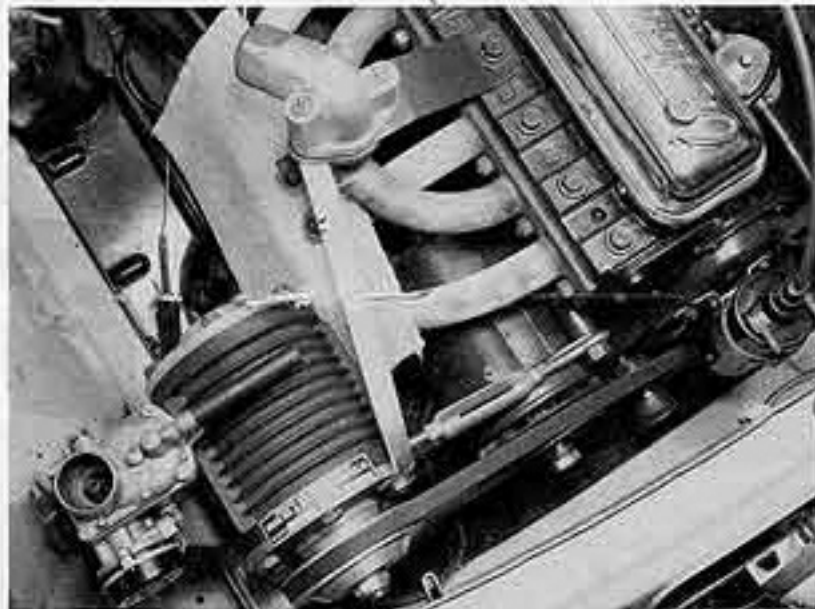
Guaranteed quality and performance

A SUPERCHARGER GIVES YOU MORE THAN JUST IMPROVED PERFORMANCE . . . IT GIVES YOU A THRILLING NEW EXPERIENCE IN MOTORING PLEASURE

One of the first things that you will notice about driving your supercharged Renault Dauphine is the feeling of assurance you get from the additional power at your command. The loss of power on hills will be a thing of the past, you can pass when you want to and have extra power when you need it. Constant gear shifting is eliminated. It flattens hills, works wonders at stop lights and provides better control for safer driving.



Here is a complete supercharger installation designed specifically for the Renault Dauphine. Everything is furnished with the kit and the installation can be made easily with standard tools in less than two hours by following the illustrated instructions furnished with the supercharger.



The Judson Supercharger is a tried and proven product that is bringing improved performance and complete satisfaction to over 50,000 owners throughout the world. The simple design and rugged construction assure years of dependable service and thousands of miles of happy motoring.

IT IS DIFFICULT TO EXPRESS A SENSATION IN WORDS, A THRILL IN FIGURES. JUST FOR FUN DRIVE A JUDSON SUPERCHARGED RENAULT DAUPHINE AND FEEL THE DIFFERENCE.

AUTOMATIC FEATURE—The Judson automatically and instantly replaces the vacuum in the manifold with a pressure in proportion to the load placed on the engine. The extra power afforded by the supercharger is made available when and as you need it. The engine is not supercharged when at idle or even cruising along the highway at 60 miles per hour (this only requires about 14 horsepower regardless of whether the engine is supercharged or unsupercharged). If, however, you come to a hill and wish to maintain your speed, the throttle is opened further to compensate for the load placed on the engine by the hill and the engine is immediately supercharged to provide the additional power required (the vacuum in the manifold is replaced with a pressure automatically). The engine is also automatically supercharged when you press on the accelerator to pass or in accelerating (reduces gear changes required by 50%).

ENGINE RELIABILITY—Supercharging at low pressure does not affect the reliability of the engine in any way. Dependability, starting ease, idling or engine life is not sacrificed. The Judson Supercharger Installation is in complete keeping with the Renault's reputation of reliability and the engine is more than rugged enough to take low pressure supercharging. The Renault Dauphine is a natural for this bolt-on method of improving performance.

FUEL CONSUMPTION—Average fuel consumption is increased by a maximum of less than 5%. The increased power afforded by supercharging is provided for by improved engine efficiencies. This slight increase in fuel consumption is a small price to pay for the additional power made available.

DEPENDABILITY—The Judson Supercharger is precision automotive equipment designed, engineered and manufactured by America's leading manufacturer of superchargers. High capacity precision bearings and alloy material assure years of efficient and dependable service. There are thousands of Judson Superchargers in operation throughout the world.

NOISE—Judson Superchargers are famous for their silent operation and tests show that the noise of the engine is not raised by the installation of our supercharger.

SERVICE—The only service required is the occasional checking of the oil level in the automatic lubricator. One filling is sufficient for one thousand miles. The drive belt is a standard size and available everywhere. Supercharger can be completely overhauled by any competent mechanic by following the complete service data shipped with every unit. All components are interchangeable.

WARRANTY—Every Judson Supercharger carries a standard manufacturer's ninety-day warranty. In addition to this product warranty, the Judson Supercharger is guaranteed to increase the horsepower delivered to the rear wheels by 50%.

READ WHAT THE WORLD'S LEADING AUTO MAGAZINES SAY ABOUT THE JUDSON

DAS AUTO (Germany) "The Judson Supercharger has greatly impressed us . . . it truly allows a new experience in motoring."

ROAD & TRACK "The car is completely transformed with absolutely no objectionable features."

AUTO VISIE (Holland) "The difference in performance between the supercharged and unsupercharged car is greater than one would believe possible."

MOTORSPORT "After putting the car through its paces and comparing notes on its present vs. past performance, there can be no doubt about the value of supercharging."