

MAIN GROUP

2

	Illustration
01 Fuel tank	10
09 Fuel tap	10
51 Exhaust system	11
55 Heater pipes	11

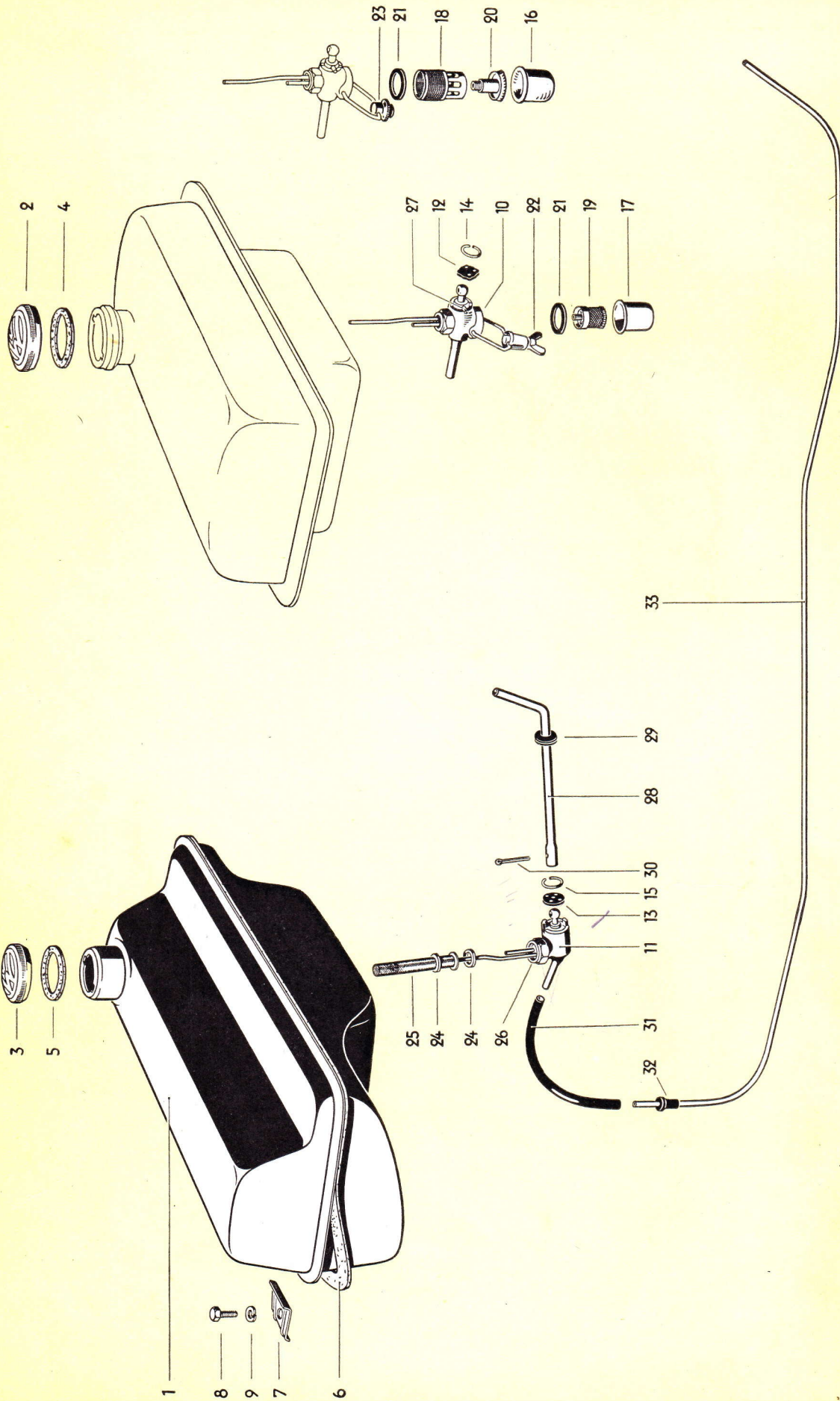


Illustration 10

Key No.	Part No.	Description	Quantity	Type and model
FUEL TANK				
1	111 201 055 B	Fuel tank	1	
-	111 201 141	Ring, threaded – Fuel gauge 111 919 051 A	1	
-	*211 201 145	Ring, threaded – Fuel gauge 111 919 051	1	
-	111 201 531	Filter – Fuel tank <i>NOT AVAILABLE</i>	1	
2	*111 201 551	Filler cap 100 mm dia.	1	
3	*111 201 551 A	Filler cap 80 mm dia.	1	
-	*211 201 551	Filler cap 60 mm dia.	1	
4	*111 201 557	Gasket (cork) – Fuel tank filler cap 111 201 551 ..	1	
5	*111 201 557 A	Gasket (cork) – Fuel tank filler cap 111 201 551 A	1	
-	*111 201 557 B	Gasket (rubber) – Fuel tank filler cap 111 201 551	1	
-	*111 201 557 C	Gasket (rubber) – Fuel tank filler cap 111 201 551 A	1	
<i>ORDER</i>	*211 201 557	Gasket (cork) – Fuel tank filler cap 211 201 551 ..	1	
	<i>211 201 557 B</i>			
-	*211 201 557 A	Gasket (rubber) – Fuel tank filler cap 211 201 551	1	
6	111 201 621 B	Anti squeak (paper) – Fuel tank	1	
7	111 201 635 A	Spacer – Fuel tank	4	
8	N 10 240 2	Bolt, hex. head, M 8×20 DIN 933 galvanized	4	
9	N 12 008 2	Lock washer B 8 DIN 127 galvanized	4	
FUEL TAP				
-	*211 209 021	Fuel tap (pipe connection 8 mm)	1	
10	*211 209 021 A	Fuel tap (pipe connection 6 mm)	1	
		up to chassis No. 1 – 929 745		

Key No.	Part No.	Description	Quantity	Type and model
11	111 209 021 D	Fuel tap from chassis No. 1 - 929 746	1	
12	*111 209 113	Seal - Fuel tap cone	1	
		(fuel tap 211 209 021/A)		
13	111 209 113 A	Seal - Fuel tap cone (fuel tap 111 209 021 D)	1	
14	*111 209 115	Circlip - Fuel tap 211 209 021/A/B	1	
15	*211 209 115	Circlip - Fuel tap 111 209 021 D	1	
16	*111 209 117	Filter bowl - Fuel tap	1	
17	*111 209 117 A	Filter bowl - Fuel tap with wing nut	1	
18	*111 209 119	Filter - Fuel tap	1	
19	*111 209 119 A	Filter - Fuel tap with wing nut	1	
20	*111 209 125	Screw - Fuel tap filter	1	
21	*111 209 129	Sealing washer - Fuel tap filter bowl	1	
22	*111 209 131	Wing nut - Fuel tap	1	
23	*111 209 133	Knurled nut - Fuel tap	1	
24	*111 209 139	Sealing ring - Fuel filter in tank	2	
-	*211 209 147	Fuel filter (in tank) up to chassis No. 1 - 929 745 ...	1	
25	111 209 147	Fuel filter (in tank)	1	
		from chassis No. 1 - 929 746		
26	*111 209 159	Nut, hex. - Fuel tap	1	
27	N 13 030 1	Shank screw M 3.5×18 DIN 427 - Fuel tap	1	
-	111 209 167	Handle - Fuel tap (for tank 111 201 055)	1	
28	111 209 167 A	Handle - Fuel tap (for tank 111 201 055 B)	1	
-	111 911 911	Grommet - Fuel tap handle 111 209 167	1	
29	111 209 175 A	Grommet - Fuel tap handle 111 209 167 A	1	
		<i>IMPROVED TYPE.</i>		

Key No.	Part No.	Description	Quantity	Type and model
30	N 12 536 1	Split pin 4×30 DIN 94	1	
-	*111 209 185	Hose, length 325 mm, 7 mm I. D.	1	
31	111 209 185 A	Hose, length 325 mm, 5 mm I. D.	1	
-	*111 209 189	Grommet - Fuel pipe 8 mm dia.	2	
32	*111 209 189 A	Grommet - Fuel pipe 6 mm dia.	2	
	<i>only</i> 111-209-211	Fuel pipe 8 mm dia. - Frame tunnel	1	
33	111 209 211 A	Fuel pipe 6 mm dia. - Frame tunnel	1	

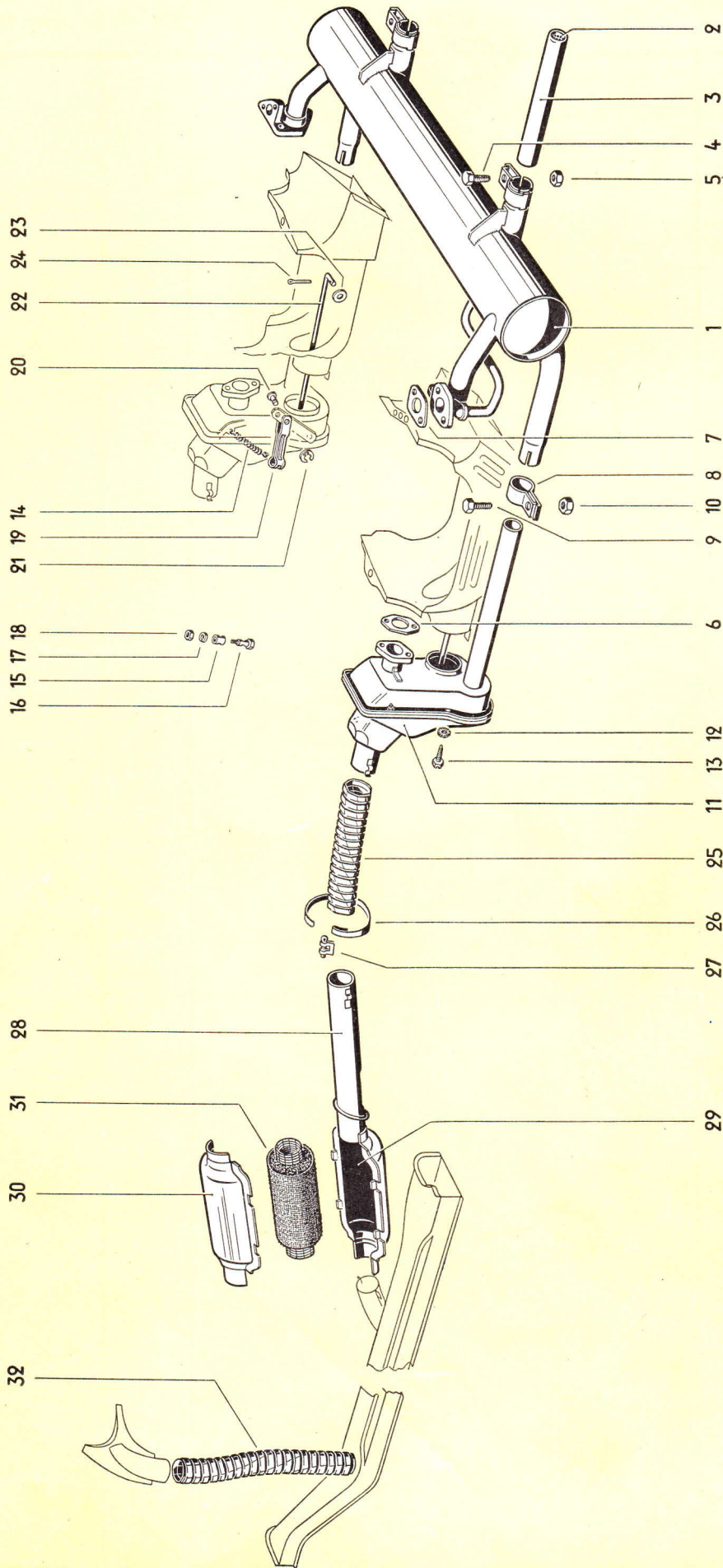


Illustration 11

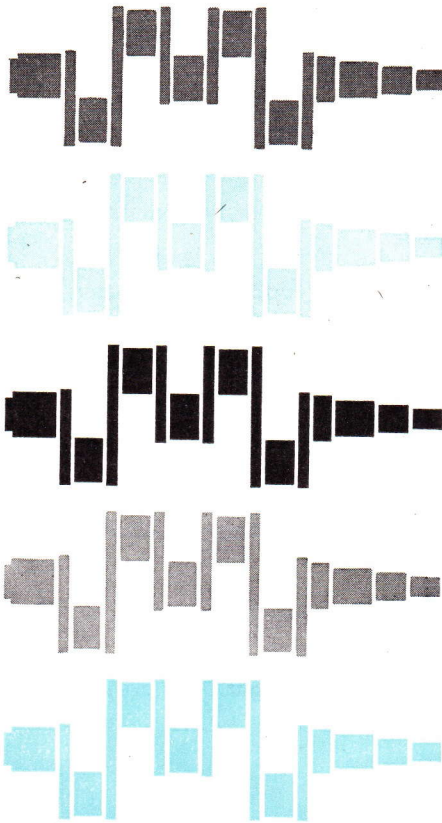
111 251 051 C	Silencer from engine No. 1 - 1 120 615	1
111 251 221	Seal 32 mm dia. - Exhaust pipe	2
111 251 223	Seal 32 mm dia. - Exhaust pipe	2
111 251 231	Seal 35 mm dia. - Tail pipe	2
111 251 233	Seal 35 mm dia. - Tail pipe	2
111 251 269 A	Clip	2
N 10 339 2	Bolt, hex. head, BM 6 x 40 DIN 931	8
N 11 006 2	Nut, hex., M 6 DIN 934 galvanized	8

PES

		Quantity	Type and model
-	111 251 051	Silencer - Exhaust up to engine No. 1 - 1 120 614 ..	1
1	111 251 051 B	Silencer - Exhaust from engine No. 1 - 1 120 615	1
2	111 251 159 A <i>111 251 051 C</i>	Silencer for tail pipe <i>NOT AVAILABLE</i> <i>SILENCER 1-1120615</i>	2
-	111 251 163 A	Tail pipe - Silencer 111 251 051 B	2 111, 112, 115, 116
3	113 251 163 A	Tail pipe - Silencer 111 251 051 B	2 113, 114, 117, 118, 151, 152
4	N 10 239 1	Bolt, hex. head, M 8x18 DIN 933	2
5	N 11 008 3	Nut, hex., M 8 DIN 934 galvanized	2
6	*111 251 261 A	Gasket - Exhaust pipe flange	4
7	*111 251 263 A	Gasket - Hot spot	2
8	*111 251 267 A	Clip - Exhaust pipe <i>UP TO ENGINE NO. 2-720 711</i> <i>R. 720 711</i>	2 711
9	N 10 239 1	Bolt, hex. head, M 8x18 DIN 933	2
10	N 11 008 3	Nut hex. M 8 DIN 934 galvanized	2
		At part-No.:	
	111 251 267 A	Clip - Exhaust pipe insert in text: ES "up to engine No. 2 720 711"	
11	*111 255 101 B <i>111 255 101 C</i>	Junction box, left <i>UP TO ENGINE NO. 2-939 200</i> <i>JUNCT. BOX LEFT FROM ENGINE NO. 2-939 201</i>	1 2 939 200
-	*111 255 102 B <i>111 255 102 C</i>	Junction box, right <i>UP TO ENGINE NO. 2-939 200</i> <i>JUNCT. BOX RIGHT FROM ENGINE NO. 2-939 201</i>	1 2-939 200
-	N 10 211 1	Bolt, hex. head, M 6x12 SZ DIN 933	10
12	N 12 105 1	Spring washer A 6.4 DIN 6798	10
13	N 13 889 1	Metal screw hex. head Z 6.3x11	10
-	111 255 271	Return spring - Heating control (single control only) <i>NOT AVAILABLE</i>	1
-	*111 255 271 A	Return spring - Heating control in lower heater .. channel (dual control only)	2
14	*111 255 271 B <i>111 255 271</i>	Return spring - Heating control in junction box ... <i>RET. SPRING HEATING CONTROL FROM ENGINE NO.</i>	2 <i>up to Eng No. 2-939 200</i> <i>2-939 201</i>

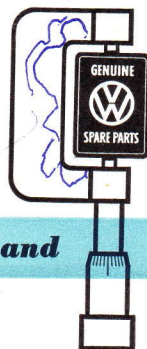
Key No.	Part No.	Description	Quantity	Type and model
15	*111 255 281	Bush – Heating control butterfly lever	2	
16	*111 255 285	Screw – Bush	2	
17	N 12 226 2	Spring washer B 6 DIN 137 galvanized	2	
18	N 11 106 1	Nut, hex., AM 6 DIN 439	2	
-	111 255 303	Actuating rod – Heating control	1	
		(single control only)		
-	N 11 651 1	Washer 5.8 galvanized	2	
-	N 11 005 2	Nut, hex., M 5 DIN 934 galvanized	2	
-	111 255 307	Operating lever, left (single control only) <i>NOT AVAILABLE</i>		
-	111 255 308	Operating lever, right (single control only) <i>NOT AVAILABLE</i>		
19	*111 255 309	Link – Heating control cable	2	
20	*111 255 311	Link pin	2	
21	N 12 434 1	Lock washer 4 DIN 6799	2	
-	*111 255 345 C <i>711 255 345 D</i>	Rod – Heating control, left (length 222 mm) <i>UP TO 263 MM FROM ENG NO 2939201</i>	1	<i>ENG No 2939200</i>
22	*111 255 346 C <i>111 255 346 D</i>	Rod – Heating control, right (length 208 mm) <i>UP TO 248 MM FROM ENG NO 2939201</i>	1	<i>ENG No 2939200</i>
23	N 11 651 1 <i>118 255 351</i>	Washer 5.8 galvanized	4	
		<i>EXTERNAL TOOTH LOCK WASHER SEE WJS BULLETIN 11/25 FROM ENG NO 2939201</i>		
24	N 12 507 1	Split pin 1.5×15 DIN 94	4	
25	111 255 357	Flexible pipe – Junction box, left <i>UP TO CHASSIS NO</i>	1	
-	111 255 358	Flexible pipe – Junction box, right <i>UP TO CHASSIS NO</i>	1	
26	N 14 079 9	Strip – Hose connection, length 450 mm	*	
		(flexible pipe)		
27	N 14 059 1	Fastener – Hose connection strip	4	
-	111 255 405	Heating pipe, left up to chassis No. 1 – 929 745 ...	1	111-118
-	111 255 406	Heating pipe, right up to chassis No. 1 – 929 745 ..	1	111-118

Key No.	Part No.	Description	Quantity	Type and model
28	111 255 413	Heating pipe from chassis No. 1 - 929 746 .. <i>R.H.</i>	<i>2</i>	
-	151 255 431	Muffler - Heater	2	
29	111 255 435 A	Muffler half, lower from chassis No. 1 - 929 746 ..	2	<i>UP TO CHASSIS NO.</i>
-	111 255 437	Muffler half, upper up to chassis No. 1 - 929 745	2	111-118
30	111 255 437 A	Muffler half, upper from chassis No. 1 - 929 746 ..	2	<i>up to chassis NO</i>
-	111 255 441	Insert - Muffler up to chassis No. 1 - 929 745	2	111-118
31	111 255 441 A	Insert - Muffler from chassis No. 1 - 929 746	2	<i>up to chassis NO.</i>
32	111 255 451	Flexible pipe, left	1	
-	111 255 452	Flexible pipe, right	1	
5/60	111 255 355	Flexible hot air tube between engine and body from Chassis No. 1 - 929 746	2	111-118, 151, 152
5/60	*211 255 465	Strip - Flexible hot air tube from Chassis No. 1 - 929 746	4	111-118, 151, 152
5/60	111 255 357	Flexible pipe - Junction box left up to Chassis No.....	1	111-118, 151, 152
5/60	111 255 358	Flexible pipe - Junction box right up to Chassis No.....	1	111-118, 151, 152
5/60	111 255 413	Heating pipe left from Chassis No. 1 - 929 746	1	111-118, 151, 152
5/60	111 255 414	Heating pipe right from Chassis No. 1 - 929 746	1	111-118, 151, 152
5/60	111 255 431	Connection pipe from Chassis No. 1 - 929 746	2	111-118, 151, 152
5/60	111 255 435 A	Muffler half, lower from Chassis No. 1 - 929 746 up to	2	111-118, 151, 152
5/60	111 255 437 A	Muffler half, upper from Chassis No. 1 - 929 746 up to	2	111-118, 151, 152
5/60	111 255 441 A	Insert - Muffler from Chassis No. 1 - 929 746 up to	2	111-118, 151, 152



“Colored Lard”

as people like to call the protective coating that guards Genuine VW Spare Parts from rust and corrosion, is not colored to make it look pretty. The color reminds you what parts have been in stock longest.



Each part is Factory Engineered and Inspected