

# MAIN GROUP

3

01	Transmission case
07	Gears, Shafts
09	Gears, Shafts (synchromesh)

## Illustration

12
13
14

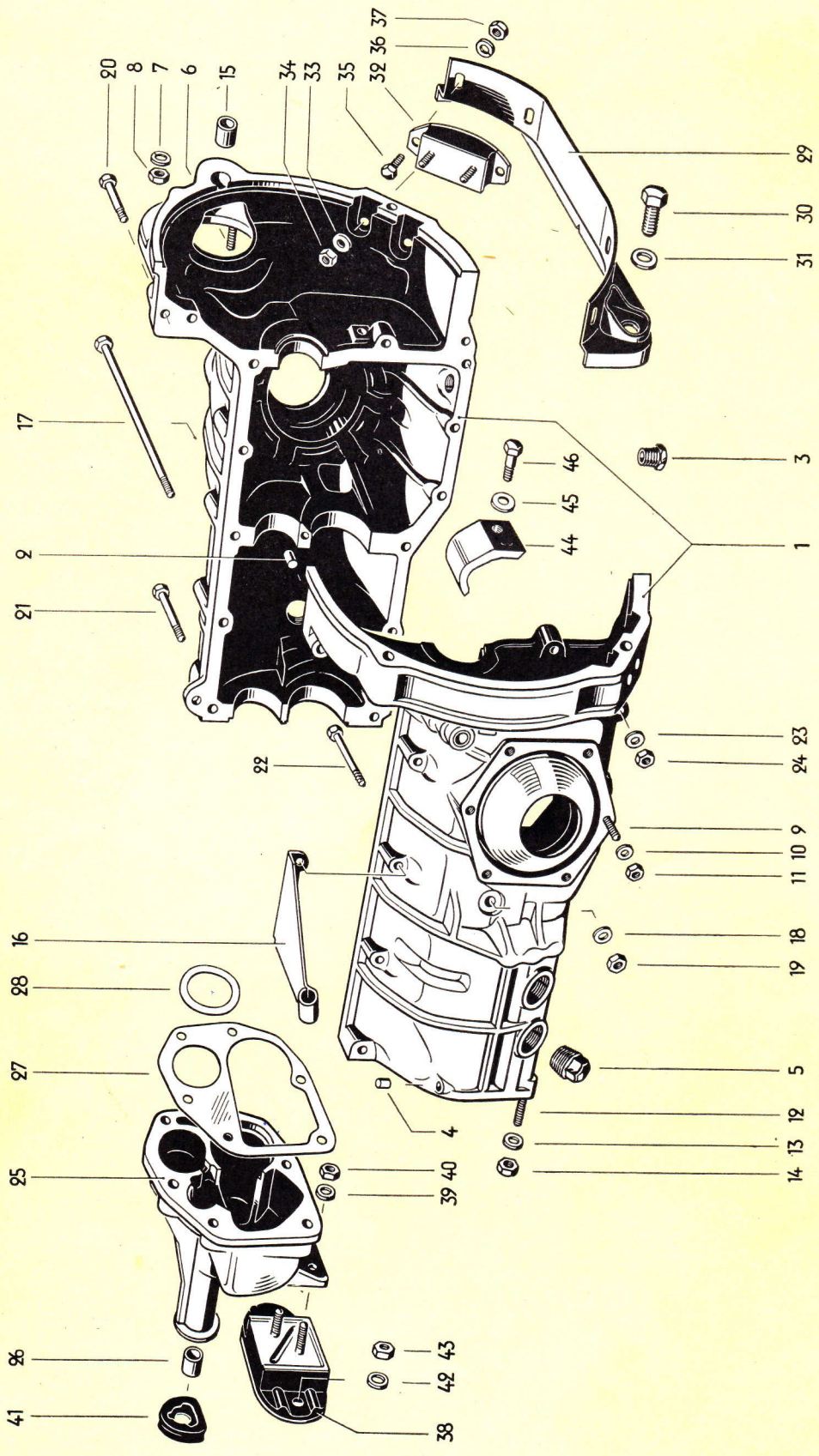


Illustration 12

Key No.	Part No.	Description	Quantity	Type and model
<b>TRANSMISSION</b>				
-	<del>111 300 025 A</del> 111 300 025 B	<b>Transmission and rear axle assy.</b> , for installation in cars up to chassis No. 1 - 397 022 <i>(EXCHANGE GEAR-SHIFT HOUSING)</i>	1	111, 112, 115, 116
-	113 300 025 A	<b>Transmission and rear axle assy. (synchromesh)</b> . . . . For installation in vehicles up to chassis No. 1 - 397 022 the following parts are additionally required: 111 711 121 A Gearshift lever 111 711 145 A Spring - Gearshift lever 111 711 105 Ball housing - Gearshift lever 111 711 155 A Gearshift rod	1	113, 114, 117, 118, 151, 152
-	<del>111 300 025 B</del>	<b>Transmission and rear axle assy.</b> <i>NOT AVAILABLE</i> from chassis No. 1 - 397 023	1	111, 112, 115, 116
-	113 300 025 C	<b>Transmission and rear axle complete (synchromesh)</b> from chassis No. 1 - 929 746 up to 1 600 439 On installation in vehs from chassis No. 1 - 397 023 to 1 - 929 745 the brake cables 113 609 721 A are to be used. On installation in vehs from chassis No. 1 600 440 up to 1 673 410 the brake cables 113 609 721 D are to be used and the brake back plates to be turned by 180 °.	1	113, 114, 117, 118, 151, 152
-	113 300 025 F	<b>Transmission and rear axle assy. (synchromesh)</b> . . from chassis No. 1 673 411	1	113, 114, 117, 118, 151, 152
<b>TRANSMISSION CASE</b>				
-	*111 301 031	<b>Transmission case</b> . . . . . For installation in cars up to chassis No. 1 - 397 022 the following parts are additionally required: 111 301 255 A Transmission mounting bracket without strap 111 301 263 Rubber cushion, rear	1	111, 112, 115, 116
-	*113 301 031	<b>Transmission case (synchromesh)</b> . . . . .	1	113, 114, 117, 118, 151, 152
1	*113 301 031 B	<b>Transmission case (synchromesh) (needle bearing)</b>	1	113, 114, 117, 118, 151, 152
2	*111 101 111	<b>Dowel pin - Transmission case</b> . . . . .	2	
3	*111 101 193	<b>Oil drain plug</b> . . . . .	2	
-	*111 101 195	<b>Oil drain plug (oversize)</b> . . . . .	x	
-	*111 101 197	<b>Oil drain plug - Magnetic</b> . . . . .	x	

Key No.	Part No.	Description	Quantity	Type and model
-	*111 101 199	Oil drain plug – Magnetic (oversize) .....	×	
4	*111 301 115	Retaining plug .....	1	
-	*111 301 127	Oil filler plug M 38×1.5 .....	1	
5	*111 301 127 A	Oil filler plug M 24×1.5 .....	1	111, 112, 115, 116 113, 114, 117, 118, 151, 152
	111 301 127 C	" " " WITH INTERNAL HEXAGON	3	
6	N 14 459 1	Stud BM 10 A×45 – Starting motor .....	1	
-	N 14 460 1	Stud CM 12×1.5 A/M 10×45 – Starting motor ....	×	
7	N 12 230 2	Spring washer B 10 DIN 137 galvanized .....	1	
8	N 11 010 2	Nut, hex., M 10 DIN 934 galvanized .....	1	
9	N 14 455 1	Stud BM 8 A×31 – Axle tube retainer .....	12	
-	N 14 456 1	Stud CM 10 A/M 8×31 – Axle tube retainer .....	×	
10	N 12 228 2	Spring washer B 8 DIN 137 galvanized .....	12	
11	N 11 008 3	Nut, hex., M 8 DIN 934 galvanized .....	12	
12	N 14 405 1	Stud AM 8 A×46 – Gearshift housing .....	6	
-	N 14 406 1	Stud CM 10 A/M 8×46 – Gearshift housing .....	×	
13	N 11 654 2	Washer 9.5 galvanized .....	6	
14	N 11 008 3	Nut, hex., M 8 DIN 934 galvanized .....	6	
15	*111 301 155	Bush – Starting motor shaft .....	1	
16	*111 301 161	Bracket from rear axle No. 456 602 .....	1	
	*111 301 129 A	Oil filler plug M 24.5 x 1.5 (oversize)	×	
<b>TRANSMISSION CASE SECURING PARTS</b>				
-	N 14 419 1	Stud AM 8 A×112 .....	1	113, 114, 117, 118, 151, 152
17	N 10 322 1	Bolt, hex. head, BM 7×170 DIN 931 .....	1	113, 114, 117, 118, 151, 152

Key No.	Part No.	Description	Quantity	Type and model
18	N 12 234 1	Spring washer B 7 DIN 137 .....	1	113, 114, 117, 118, 151, 152
19	N 11 007 1	Nut, hex., M 7 DIN 934 .....	1	113, 114, 117, 118, 151, 152
20	N 10 351 1	Bolt, hex. head, BM 8×52 DIN 931 .....	2	
21	N 10 375 1	Bolt, hex. head, BM 8×75 DIN 931 .....	10	
-	N 10 380 1	Bolt, hex. head, BM 8×80 DIN 931 .....	2	
22	N 10 390 1	Bolt, hex. head, BM 8×95 DIN 931 .....	1	
23	N 12 228 2	Spring washer B 8 DIN 137 galvanized .....	13	
24	N 11 008 3	Nut, hex., M 8 DIN 934 galvanized .....	13	
-	<b>*211 301 205</b>	<b>Gearshift housing</b> up to rear axle No. 456 601 .....	1	111, 112, 115, 116
-	<b>*211 301 205 A</b>	Gearshift housing (for transmission and rear axle assy. 113 300 025 A) .....	1	113, 114, 117, 118, 151, 152
-	111 301 205	Gearshift housing from rear axle No. 456 602 .....	1	111, 112, 115, 116
25	113 301 205	Gearshift housing .....	1	113, 114, 117, 118, 151, 152
26	*111 301 207	Bush – Gearshift housing .....	2	
-	*111 301 207 A	Bush – Gearshift housing (oversize, length 75 mm) .....	×	
-	*111 301 215	Gasket 0.1 mm – Gearshift housing .....	×	111, 112, 115, 116
27	*113 301 215	Gasket 0.1 mm – Gearshift housing .....	×	113, 114, 117, 118, 151, 152
-	*111 301 217	Gasket 0.15 mm – Gearshift housing .....	×	111, 112, 115, 116
-	*113 301 217	Gasket 0.15 mm – Gearshift housing .....	×	113, 114, 117, 118, 151, 152
-	*111 301 219	Gasket 0.2 mm – Gearshift housing .....	×	111, 112, 115, 116
-	*113 301 219	Gasket 0.2 mm – Gearshift housing .....	×	113, 114, 117, 118, 151, 152
28	*113 301 235	Gasket 0.1 mm between transmission and gearshift housing .....	×	113, 114, 117, 118, 151, 152
-	*113 301 237	Gasket 0.2 mm between transmission and gearshift housing .....	×	113, 114, 117, 118, 151, 152



Key No.	Part No.	Description	Quantity	Type and model
-	*113 301 239	Gasket 0.3 mm ..... between transmission and gearshift housing	×	113, 114, 117, 118, 151, 152
-	*111 301 251	Transmission mounting bracket with strap ..... up to rear axle No. 456 601	1	111, 112, 115, 116
-	N 11 655 2	Washer 11.5 galvanized .....	2	111, 112, 115, 116
-	N 11 010 2	Nut, hex., M 10 DIN 934 galvanized .....	2	111, 112, 115, 116
29	*111 301 255 A	Transmission mounting bracket ..... from rear axle No. 456 602	1	
30	*111 301 257	Bolt - Transmission mounting bracket .....	2	
31	N 12 240 1	Spring washer B 20 DIN 137 .....	2	
32	*111 301 263	Rubber cushion, rear ..... from rear axle No. 456 602	2	
33	N 12 228 2	Spring washer B 8 DIN 137 galvanized .....	4	
34	N 11 008 3	Nut, hex., M 8 DIN 934 galvanized .....	4	
35	N 10 238 1	Bolt, hex. head, M 8×15 DIN 933 .....	4	
36	N 12 228 2	Spring washer B 8 DIN 137 galvanized .....	4	
37	N 11 008 3	Nut, hex., M 8 DIN 934 galvanized .....	4	
38	111 301 265	Rubber cushion, front ..... from chassis No. 1 - 397 023	1	
39	111 301 265 B N 12 228 2	Spring washer B 8 DIN 137 galvanized .....	2	<i>Reduced from 59+3 to 53+3 to transfer mass from engine to body</i> <i>See w/s Bulletin H 46</i>
40	N 11 008 3	Nut, hex., M 8 DIN 934 galvanized .....	2	<i>Supply Rubber here</i> <i>Supplied through</i> <i>W.F. M. A</i>
41	111 301 289 A	Gasket between gearshift housing and frame .... from chassis No. 1 - 397 023	1	
42	N 12 230 2	Spring washer B 10 DIN 137 galvanized .....	2	
43	N 11 010 2	Nut, hex., M 10 DIN 934 galvanized .....	2	
<i>ORDER</i>	*211 301 291	Plate for mounting pad ..... up to chassis No. 1 - 397 022	1	
-	*211 301 297	Mounting pad (rubber) ..... up to chassis No. 1 - 397 022	1	
-	*211 301 297 A	Mounting pad (rubber) oversize ..... up to chassis No. 1 - 397 022	1	

Key No.	Part No.	Description	Quantity	Type and model
-	*211 301 299	Shim - Mounting pad ..... up to chassis No. 1 - 397 022	×	
-	N 11 655 2	Washer 11.5 galvanized .....	2	
-	N 10 253 1	Bolt, hex. head, M 10×22 DIN 933 .....	2	
44	111 301 351	Oil deflector .....	1	
45	111 301 359	Lockring - Oil deflector .....	1	
46	N 10 325 1	Screw, hex. head, BM 8×25 DIN 931 .....	1	
-	N 12 790 1	Dowel pin, self-locking 3×12 DIN 1472 .....	1	

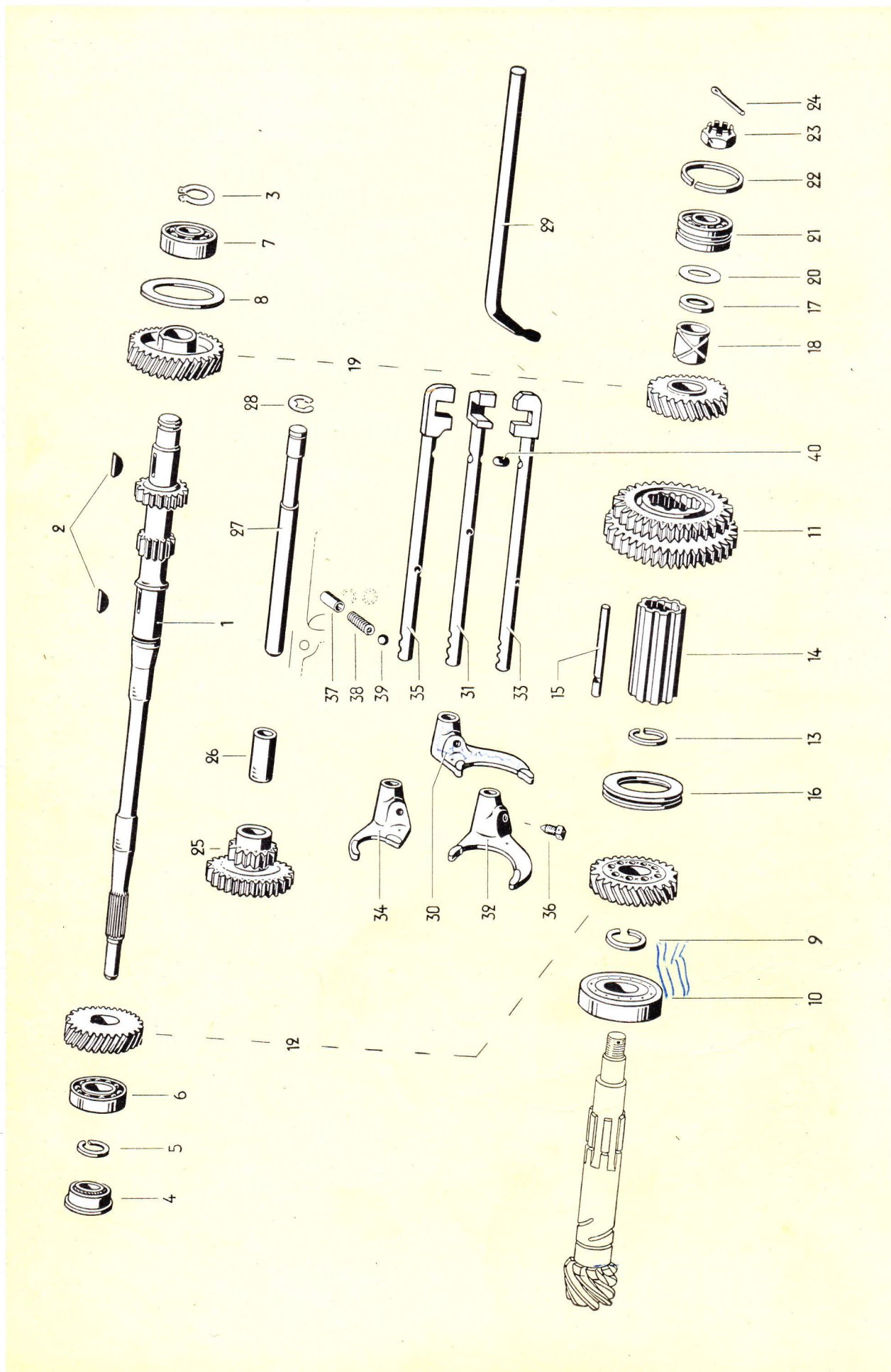


Illustration 13



Key No.	Part No.	Description	Quantity	Type and model
<b>GEARS, SHAFTS</b>				
1	*111 307 101	Main shaft .....	1	111, 112, 115, 116
2	N 12 707 1	Woodruff key 5×7.5 DIN 6888 .....	2	111, 112, 115, 116
3	N 12 420 1	Lockring 20×1.2 DIN 471 .....	1	111, 112, 115, 116
4	*111 307 113	Oil seal – Main shaft .....	1	111, 112, 115, 116
5	*111 307 121	Lockring .....	1	111, 112, 115, 116
6	*111 307 125	Ball bearing, rear – Main shaft .....	1	111, 112, 115, 116
7	*111 307 123	Ball bearing, front – Main shaft .....	1	111, 112, 115, 116
	<i>ORDER 113 307 123A</i>			
-	*111 307 155	Retaining ring 2.2 mm – Ball bearing, front .....	1	111, 112, 115, 116
-	*111 307 157	Retaining ring 2.1 mm – Ball bearing, front .....	1	111, 112, 115, 116
8	*111 307 159	Retaining ring 2.0 mm – Ball bearing, front .....	1	111, 112, 115, 116
9	N 27 341 1	Circlip SP 30 A for drive pinion .....	1	111, 112, 115, 116
10	*111 307 219	Roller bearing – Drive pinion .....	1	111, 112, 115, 116
11	*111 307 255	Sliding gear (1 <sup>st</sup> and 2 <sup>nd</sup> speed) .....	1	111, 112, 115, 116
12	*111 307 275	Gear train (3 <sup>rd</sup> speed) .....	1	111, 112, 115, 116
13	*111 307 291	Lockring 2.0 mm – Guide sleeve .....	1	111, 112, 115, 116
-	*111 307 293	Lockring 2.4 mm – Guide sleeve .....	1	111, 112, 115, 116
14	*111 307 295	Guide sleeve (length 75 mm) – Drive pinion .....	1	111, 112, 115, 116
15	*111 307 301	Shifting pin .....	9	111, 112, 115, 116
16	*111 307 303	Selector ring (3 <sup>rd</sup> and 4 <sup>th</sup> speed) .....	1	111, 112, 115, 116
17	*111 307 309	Spacer – Guide sleeve .....	1	111, 112, 115, 116
18	*111 307 325	Bush – 4 <sup>th</sup> speed sliding gear on drive pinion .....	1	111, 112, 115, 116

Key No.	Part No.	Description	Quantity	Type and model
19	*111 307 341	Gear train (4 <sup>th</sup> speed) .....	1	111, 112, 115, 116
20	*111 307 365	Shim 0.2 mm – Drive pinion .....	×	111, 112, 115, 116
–	*111 307 367	Shim 0.3 mm – Drive pinion .....	×	111, 112, 115, 116
–	*111 307 369	Shim 0.15 mm – Drive pinion .....	×	111, 112, 115, 116
21	*111 307 375	Ball bearing – Drive pinion .....	1	111, 112, 115, 116
22	*111 307 377	Lockring – Ball bearing .....	1	111, 112, 115, 116
23	*111 307 385	Nut, slotted – Drive pinion .....	1	111, 112, 115, 116
24	N 12 536 1	Split pin 4×30 DIN 94 .....	1	111, 112, 115, 116
25	*111 307 501	Sliding gear – Reverse .....	1	111, 112, 115, 116
26	*111 307 511	Bush – Reverse sliding gear .....	1	111, 112, 115, 116
27	*111 307 515	Shaft – Reverse sliding gear .....	1	111, 112, 115, 116
–	*111 307 519	Lock plate – Reverse sliding gear shaft .....	1	111, 112, 115, 116
28	N 12 450 1	Lockwasher 15 DIN 6799 .....	1	111, 112, 115, 116
–	*111 307 541	Gear change lever, inner up to chassis No. 1 – 428 156	1	111, 112, 115, 116
29	*111 307 541 A	Gearshift lever, inner from chassis No. 1 – 428 157	1	111, 112, 115, 116
30	*111 307 551	Selector fork (1 <sup>st</sup> and 2 <sup>nd</sup> speed) .....	1	111, 112, 115, 116
31	*111 307 557	Selector shaft (1 <sup>st</sup> and 2 <sup>nd</sup> speed) .....	1	111, 112, 115, 116
32	*111 307 561	Selector fork (3 <sup>rd</sup> and 4 <sup>th</sup> speed) .....	1	111, 112, 115, 116
33	*111 307 567	Selector shaft (3 <sup>rd</sup> and 4 <sup>th</sup> speed) .....	1	111, 112, 115, 116
34	*111 307 571	Selector fork (reverse) .....	1	111, 112, 115, 116
35	*111 307 577	Selector shaft (reverse) .....	1	111, 112, 115, 116
36	*111 711 189	Screw – Selector fork (square head) .....	3	111, 112, 115, 116

Key No.	Part No.	Description	Quantity	Type and model
37	*111 307 621	Sleeve – Detent ball .....	3	111, 112, 115, 116
38	*111 307 625	Spring – Detent ball .....	3	111, 112, 115, 116
39	*111 307 627	Detent ball – Selector shaft .....	1	111, 112, 115, 116
40	*111 307 629	Plunger – Gear lock .....	2	111, 112, 115, 116

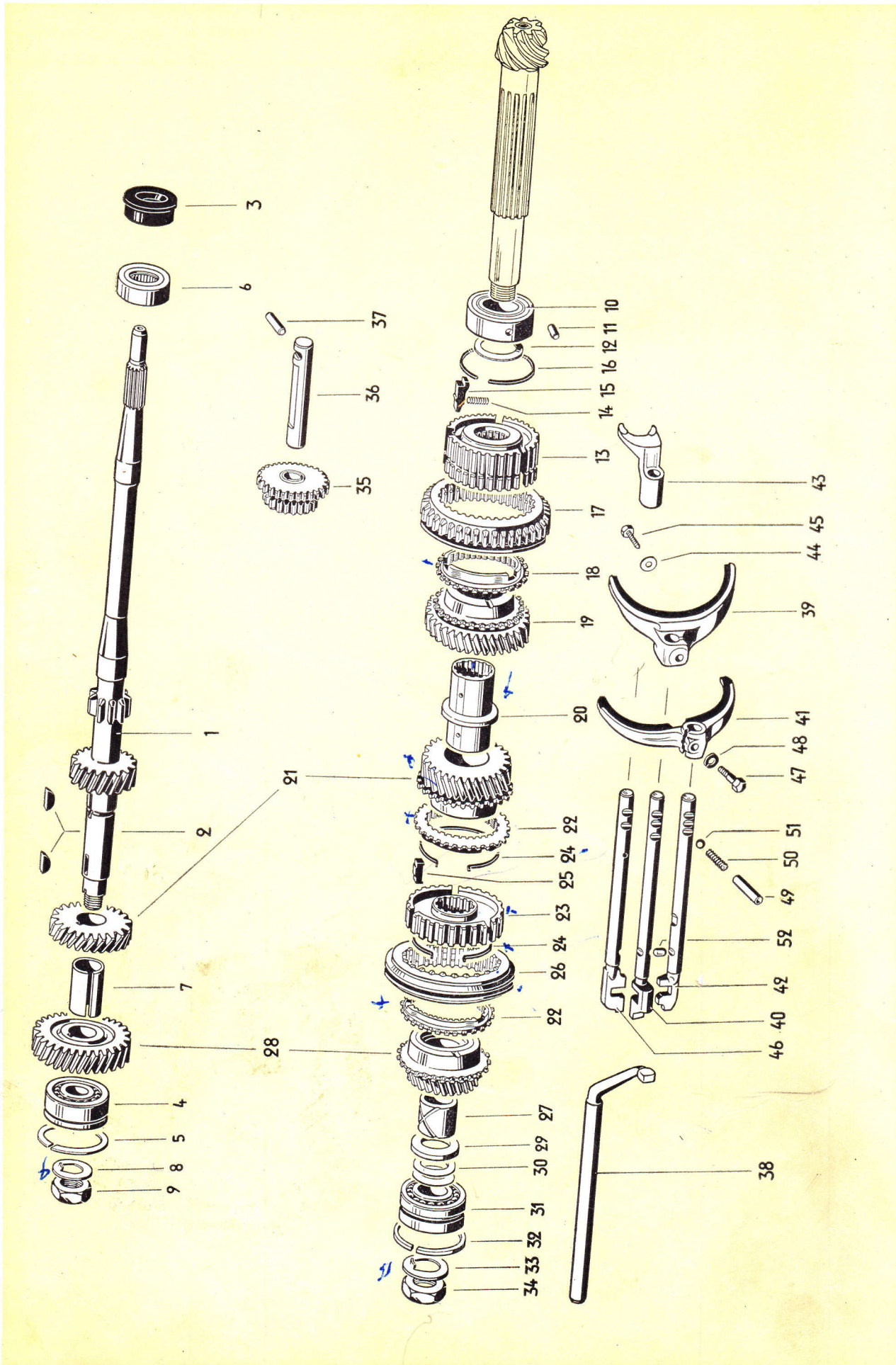


Illustration 14

M

113 309 101 B  
113 309 261 A

Insert:  
Main shaft (needle bearing)  
Gear (2<sup>nd</sup> speed) on drive pinion  
(see Workshop Bulletin H/3)

MISSION Gears, Shafts (synchromesh)

Key No		Quantity	Type and model
	113 309 101 C Insert: Main shaft (similar to 113 309 101, but with modified toothings for 2 <sup>nd</sup> gear. synmesh) Can only be used with 113 309 261 A)		
-	<del>*113 309 101</del> Main shaft <i>ORDER 113 309 101 C</i>	1	113, 114, 117, 118, 151, 152
	<i>113 309 101 A SUPERSEDED BY 113 309 101 B</i>		
1	*113 309 101 A Main shaft (needle bearing) <i>see workshop Bull H/3</i>	1	113, 114, 117, 118, 151, 152
2	<i>*113 309 101 C MAIN SHAFT WITH MODIFIED TOOTHING FOR 2<sup>nd</sup> gear</i> N 12 707 1 Woodruff key 5x7,5 DIN 6888	2	113, 114, 117, 118, 151, 152
	<i>CAN ONLY BE USED WITH 113 309 261 A</i>		
3	*111 307 113 Oil seal - Main shaft	1	113, 114, 117, 118, 151, 152
-	*111 307 121 Lockring - Ball bearing	1	113, 114, 117, 118, 151, 152
4	*113 309 123 A Ball bearing, front - Main shaft	1	113, 114, 117, 118, 151, 152
5	N 27 347 1 Circlip Sp 52 A DIN 5417	1	113, 114, 117, 118, 151, 152
-	*111 307 125 Ball bearing, rear - Main shaft	1	113, 114, 117, 118, 151, 152
6	*113 309 125 Needle bearing - Main shaft	1	113, 114, 117, 118, 151, 152
-	*113 309 125 A Needle bearing - Main shaft (modified version)	1	113, 114, 117, 118, 151, 152
7	*113 309 141 Spacer between 3 <sup>rd</sup> and 4 <sup>th</sup> gears	1	113, 114, 117, 118, 151, 152
-	*113 309 151 Lock plate - Main shaft 113-309 101	1	113, 114, 117, 118, 151, 152
8	*113 309 151 A Lock plate - Main shaft 113 309 101 A	1	113, 114, 117, 118, 151, 152
9	*113 309 153 Nut, hex. - Main shaft	1	113, 114, 117, 118, 151, 152
-	*111 307 219 Roller bearing - Drive pinion	1	113, 114, 117, 118, 151, 152
10	*113 309 219 Needle bearing - Drive pinion	1	113, 114, 117, 118, 151, 152
-	*113 309 219 A Needle bearing - Drive pinion (modified version)	1	113, 114, 117, 118, 151, 152
11	*113 309 223 Dowel pin - Needle bearing on drive pinion	1	113, 114, 117, 118, 151, 152
-	*113 309 225 Shim 0.1 mm - Clutch gear	x	113, 114, 117, 118, 151, 152
12	*113 309 225 A Shim 0.1 mm, 36.5 mm O.D. - Clutch gear	x	113, 114, 117, 118, 151, 152
-	*113 309 227 Shim 0.15 mm - Clutch gear	x	113, 114, 117, 118, 151, 152



		Delete:		Quantity	Type and model
113 309 261		superseded by: 113 309 261 A (the drive shaft 113 309 101 B or 113 309 101 C must also be used)			
-	*113 309 227 A	Shim 0.15 mm, 36.5 mm O.D. - Clutch gear .....		×	113, 114, 117, 118, 151, 152
-	*113 309 231	Spacer ring .....		1	113, 114, 117, 118, 151, 152
13	*113 309 233 A	Clutch gear - 2 <sup>nd</sup> gear .....		1	113, 114, 117, 118, 151, 152
14	*113 309 237	Spring - 1 <sup>st</sup> and 2 <sup>nd</sup> gears .....		3	113, 114, 117, 118, 151, 152
15	*113 309 239 A	Shifting plate - 1 <sup>st</sup> and 2 <sup>nd</sup> gears .....		3	113, 114, 117, 118, 151, 152
16	*113 309 241	Circlip .....		1	113, 114, 117, 118, 151, 152
17	*113 309 251	Gear (1 <sup>st</sup> speed) on drive pinion .....		1	113, 114, 117, 118, 151, 152
18	*113 309 257	Synchronizer stop ring - 2 <sup>nd</sup> gear .....		1	113, 114, 117, 118, 151, 152
19	*113 309 261	Gear (2 <sup>nd</sup> speed) on drive pinion .....		1	113, 114, 117, 118, 151, 152
20	*113 309 265	Bearing bush for 2 <sup>nd</sup> and 3 <sup>rd</sup> gears on drive pinion		1	113, 114, 117, 118, 151, 152
21	*113 309 275 A	Gear train (3 <sup>rd</sup> speed) .....		1	113, 114, 117, 118, 151, 152
22	*113 309 295	Synchronizer stop ring - 3 <sup>rd</sup> and 4 <sup>th</sup> gears .....		2	113, 114, 117, 118, 151, 152
23	*113 309 309	Clutch gear - 3 <sup>rd</sup> and 4 <sup>th</sup> gears .....		1	113, 114, 117, 118, 151, 152
24	*113 309 311	Snap ring - Shifting plate .....		2	113, 114, 117, 118, 151, 152
25	*113 309 313	Shifting plate - 3 <sup>rd</sup> and 4 <sup>th</sup> gears .....		3	113, 114, 117, 118, 151, 152
26	*113 309 315	Operating sleeve - 3 <sup>rd</sup> and 4 <sup>th</sup> gears .....		1	113, 114, 117, 118, 151, 152
27	*113 309 325	Bearing bush - 4 <sup>th</sup> gear .....		1	113, 114, 117, 118, 151, 152
28	*113 309 341 A	Gear train (4 <sup>th</sup> speed) .....		1	113, 114, 117, 118, 151, 152
29	*113 309 361	Thrust washer - 4 <sup>th</sup> gear .....		1	113, 114, 117, 118, 151, 152
30	*111 307 365	Shim 0.2 mm - Drive pinion .....		×	113, 114, 117, 118, 151, 152
-	*111 307 367	Shim 0.3 mm - Drive pinion .....		×	113, 114, 117, 118, 151, 152
-	*111 307 369	Shim 0.15 mm - Drive pinion .....		×	113, 114, 117, 118, 151, 152
5/60	*113 309 223 A	Pin - Needle bearing from Chassis No. 1 931 509		1	113, 114, 117, 118, 141-152

Key No.	Part No.	Description	Quantity	Type and model
31	*111 307 375	Ball bearing – Drive pinion .....	1	113, 114, 117, 118, 151, 152
32	*111 307 377	Lockring – Ball bearing .....	1	113, 114, 117, 118, 151, 152
–	*113 309 381	Lockwasher – Drive pinion .....	1	113, 114, 117, 118, 151, 152
33	*113 309 381 A	Lockwasher – Drive pinion .....	1	113, 114, 117, 118, 151, 152
34	*113 309 385	Nut – Drive pinion .....	1	113, 114, 117, 118, 151, 152
35	*113 309 501 B	Sliding gear .....	1	113, 114, 117, 118, 151, 152
–	*113 309 515 A	Shaft – Reverse sliding gear .....	1	113, 114, 117, 118, 151, 152
36	*113 309 515 B	Shaft – Reverse sliding gear .....	1	113, 114, 117, 118, 151, 152
		(transmission with needle bearing)		
–	*113 309 521	Locking bolt – Reverse sliding gear shaft .....	1	113, 114, 117, 118, 151, 152
37	*113 309 521 A	Locking bolt – Reverse sliding gear shaft .....	1	113, 114, 117, 118, 151, 152
		(transmission with needle bearing)		
–	*113 309 521 B	Locking bolt – Reverse sliding gear shaft .....	1	113, 114, 117, 118, 151, 152
		(needle bearing, modified version)		
38	*111 307 541 A	Gearshift lever, inner .....	1	113, 114, 117, 118, 151, 152
39	*113 309 551	Selector fork (1 <sup>st</sup> and 2 <sup>nd</sup> speed) .....	1	113, 114, 117, 118, 151, 152
40	*113 309 557	Selector shaft (1 <sup>st</sup> and 2 <sup>nd</sup> speed) .....	1	113, 114, 117, 118, 151, 152
41	*113 309 561	Selector fork (3 <sup>rd</sup> and 4 <sup>th</sup> speed) .....	1	113, 114, 117, 118, 151, 152
42	*113 309 567	Selector shaft (3 <sup>rd</sup> and 4 <sup>th</sup> speed) .....	1	113, 114, 117, 118, 151, 152
43	*113 309 571 A	Selector fork (reverse) .....	1	113, 114, 117, 118, 151, 152
44	N 12 234 1	Spring washer B 7 DIN 137 .....	1	113, 114, 117, 118, 151, 152
45	N 10 228 1	Bolt, hex. head, M 7×16 DIN 933 .....	1	113, 114, 117, 118, 151, 152
46	*113 309 577	Selector shaft (reverse) .....	1	113, 114, 117, 118, 151, 152
47	*113 309 595	Screw – Selector fork .....	2	113, 114, 117, 118, 151, 152
48	N 12 228 2	Spring washer B 8 DIN 137 galvanized .....	2	113, 114, 117, 118, 151, 152

Key No.	Part No.	Description	Quantity	Type and model
49	*111 307 621	Sleeve – Detent ball .....	3	113, 114, 117, 118, 151, 152
50	*111 307 625	Spring – Detent ball .....	3	113, 114, 117, 118, 151, 152
51	*111 307 627	Detent ball – Selector shaft .....	3	113, 114, 117, 118, 151, 152
52	*111 307 629	Plunger – Gear lock .....	2	113, 114, 117, 118, 151, 152