

MAIN GROUP

5

	Illustration
01 Rear axle	17
11 Rear suspension	17
13 Shock absorber	17
17 Differential	18

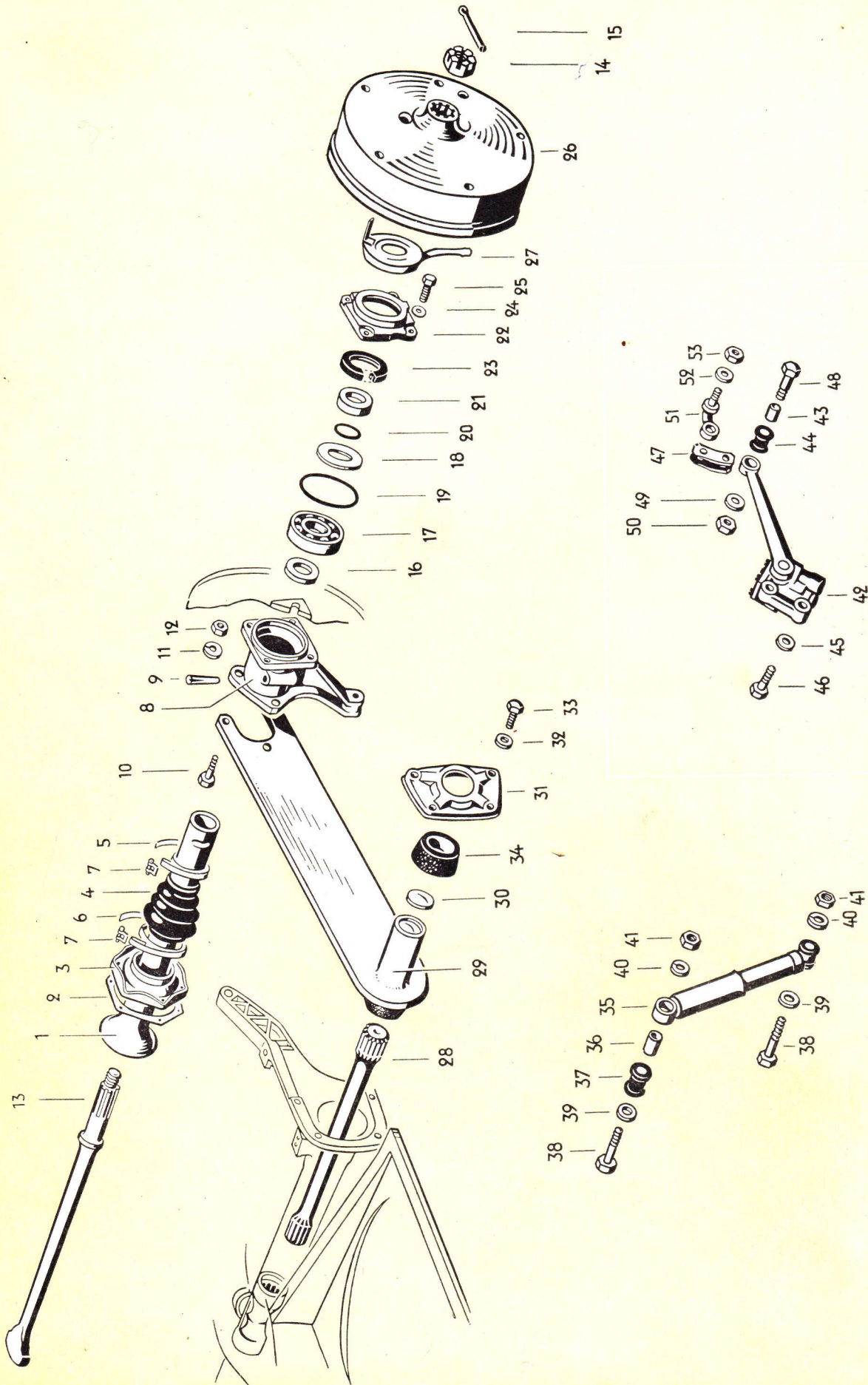


Illustration 17

Key No.	Part No.	Description	Quantity	Type and model
REAR AXLE				
1	111 501 105	Tube – Rear axle	2	
2	*111 501 131	Gasket 0.3 mm – Rear axle tube retainer	X	
-	*111 501 133	Gasket 0.1 mm – Rear axle tube retainer	X	
3	*111 501 141	Retainer – Rear axle tube	2	
-	*111 501 143	Retainer – Rear axle tube (undersize)	X	
4	*111 501 151	Boot – Rear axle joint (rubber)	2	
-	*111 501 153 A	Boot – Rear axle joint (rubber, split type)	2	
-	N 11 251 1	Screw, button head, AM 4×18 DIN 86	12	
-	N 11 664 1	Washer 4.1	24	
-	N 11 004 2	Nut, hex., M 4 DIN 934 galvanized	12	
-	N 14 079 9	Strip – Hose connection, length 450 mm – Boot 111 501 153 A	*	
5	N 14 079 9	Strip – Hose connection, length 390 mm – Boot 111 501 151	*	
-	N 14 079 9	Strip – Hose connection, length 680 mm – Boot 111 501 153 A	*	
6	N 14 079 9	Strip – Hose connection, length 620 mm – Boot 111 501 151	*	
7	N 14 059 1	Fastener – Hose connection strip	4	
-	111 501 163	Flange – Rear axle tube mounting, left up to chassis No. 1 673 410	1	
8	111 501 163-B <i>111 501 163 C</i>	Flange – Rear axle tube mounting, left from chassis No. 1 673 411	1	<i>WDT 222 7527</i>
-	111 501 164	Flange – Rear axle tube mounting, right up to chassis No. 1 673 410	1	
-	111 501 164-B <i>111 501 164 C</i>	Flange – Rear axle tube mounting, right from chassis No. 1 673 411	1	<i>WDT 222 7527</i>
9	N 12 801 1	Dowel pin, self-locking, 10×40 DIN 1472	2	
-	*211 501 181	Bolt, hex. head up to chassis No. 1 – 397 022	6	

Illustration 17

111 501 163 C
111 501 164 C

*} FLANGE R + left.
FROM CHASSIS No. ~~222 8828~~
167 3411*

*See w/s Bulletin
H 15*

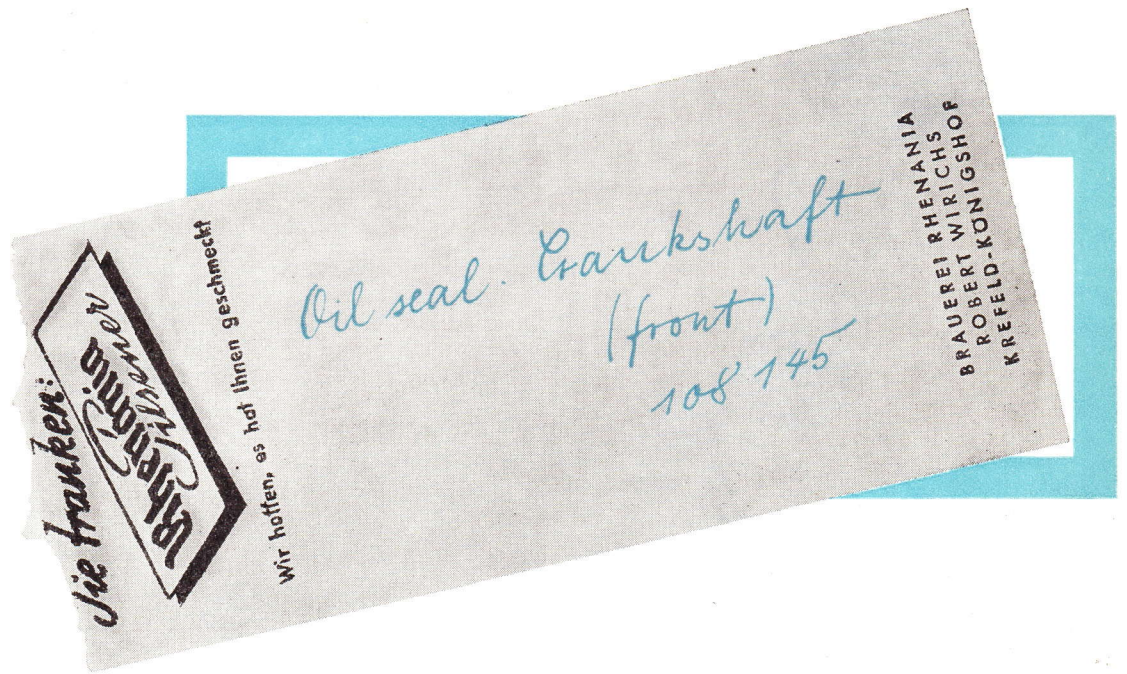
Key No	111 501 201 A	At part-No.: delete in text "green" (rear axle shafts are available in blue or pink only)	Quantity	Type and model
10	N 10 127 1	Bolt, hex. head, M 12×1.5×30 DIN 96U from chassis No. 1 – 397 023 onward	6	
11	N 12 012 1	Lock washer B 12 DIN 127	6	
12	N 11 020 1	Nut, hex., M 12×1.5 DIN 934	6	
13	111 501 201 A	Rear axle shaft (quote color: blue, pink or green)	2	
14	*111 501 221	Nut, slotted – Rear axle shaft	2	
15	N 12 545 1	Split pin 5×45 DIN 94	2	
16	*111 501 281	Spacer (inner) – Rear wheel bearing	2	
17	*111 501 283	Ball bearing – Rear wheel	2	
18	*111 501 286	Washer between ball bearing and spacer	2	
19	*111 501 291	Gasket – Bearing cover	2	
20	*111 501 296	Gasket between spacer and rear wheel bearing ...	2	
-	111 501 303	Spacer (outer, width 13 mm) – Rear wheel bearing	2	111 – 118
21	*111 501 303 A	Spacer (outer, width 15.5 mm) – Rear wheel bearing	2	
-	*111 501 311	Cover – Rear wheel bearing up to chassis No. 1 673 410	2	
22	111 501 311 B	Cover – Rear wheel bearing from chassis No. 1 673 411	2	
23	*111 501 315	Oil seal (outer) – Rear wheel bearing	2	
24	N 12 230 2	Spring washer B 10 DIN 137 galvanized	8	
25	*111 501 325	Screw – Bearing cover	8	
-	111 501 615	Brake drum, rear up to chassis No. 1 673 410	2	
-	111 501 615	Brake drum, rear from chassis No. 1 673 411	2	111, 112, 115, 116
26	113 501 615 A	Brake drum, rear from chassis No. 1 673 411	2	113, 114, 117, 118, 151, 152
27	111 501 631	Oil deflector – Brake drum	2	

*111 513 475 A Bolt, hex. head, M 12 x 1.5 x 87 - Shock absorber from chassis No. 1 - 397 023 up to 2 228 827 4

*111 513 475 B Bolt, hex. head, M 12 x 1.5 x 80 - Shock absorber from chassis No. 2 228 828 *MODIFIED MOUNTING* 4

			Quantity	Type and model
38	*111 513 475 A	Bolt, hex. head - Shock absorber from chassis No. 1 - 397 023	4	
39	*111 513 479	Washer	4	
40	N 12 012 1	Lock washer B 12 DIN 127	4	
41	N 11 020 1	Nut, hex., M 12x1.5 DIN 934	4	
42	111 513 037	Shock absorber, left (lever type)	1	
-	111 513 038	Shock absorber, right (lever type)	1	
43	*111 513 401	Bush - Shock absorber grommet (lever type shock absorber)	4	
44	*111 413 381	Grommet - Lever type shock absorber	4	
45	N 12 232 1	Spring washer B 12 DIN 137	4	
46	N 10 140 1	Bolt, hex. head, M 12x1.5x40 DIN 960	4	
47	*111 513 491	Link - Lever type shock absorber, left	2	
-	*111 513 492	Link - Lever type shock absorber, right	2	
48	N 10 335 1	Bolt, hex. head, M 8x35 DIN 931	4	
49	N 12 228 2	Spring washer B 8 DIN 137 galvanized	4	
50	N 11 008 3	Nut, hex., M 8 DIN 934 galvanized	4	
51	111 513 495	Eye bolt	2	
52	N 12 232 1	Spring washer B 12 DIN 137	2	
53	N 11 020 1	Nut, hex., M 12x1.5 DIN 934	4	
-	111 513 497	Mounting plate - Shock absorber, rear, left up to chassis No. 1 - 397 022	1	
-	111 513 498	Mounting plate - Shock absorber, rear, right up to chassis No. 1 - 397 022	1	
-	N 11 212 1	Nut, slotted, M 12x1.5 DIN 937	2	
-	N 12 532 1	Split pin 3x25 DIN 94	2	
-	N 10 155 1	Bolt, hex. head, M 12x1.5x55 S DIN 960	2	

Key No.	Part No.	Description	Quantity	Type and model
REAR SUSPENSION				
-	111 511 109	Torsion bar (25 mm dia.) up to chassis No. 1 - 397 022	2	
28	111 511 111 A	Torsion bar (24 mm dia.) from chassis No. 1 - 397 023	2	
-	111 511 205	Spring plate up to chassis No. 1 - 397 022	2	
29	111 511 205 A	Spring plate from chassis No. 1 - 397 023	2	
-	111 511 221	Cap - Spring plate	2	
30	N 11 605 1	Expansion plug 38 DIN 470	2	
-	111 511 225	Cover - Spring plate hub up to chassis No. 1 - 397 022	2	
31	111 511 225 A	Cover - Spring plate hub from chassis No. 1 - 397 023	2	
32	N 11 655 2	Washer 11.5 galvanized	8	
33	N 10 430 1	Bolt, hex. head, BM 10x30 K DIN 931	8	
-	111 511 245	Rubber bush - Spring plate hub up to chassis No. 1 - 397 022	4	
34	111 511 245 A	Rubber bush - Spring plate hub from chassis No. 1 - 397 023	4	
	111 511 225 C	Cover - Spring plate hub from chassis No. 1 - 397 023 up to 2 528 667 <i>CHANGE IN PRODUCTION</i>	2	
-	111 513 031	Shock absorber, rear up to chassis No. 1 - 397 022	2	
-	111 513 031 B	Shock absorber, rear up to chassis No. 1 - 397 022	2	
35	111 513 031 C	Shock absorber, rear from chassis No. 1 - 397 023	2	
-	111 513 031 D	Shock absorber, rear from chassis No. 1 - 397 023	2	
36	*111 413 371 A	Bush - Rubber grommet	4	
37	*111 413 381 A	Grommet - Shock absorbers 111 513 031/C	4	
-	111 413 381 B	Grommet - Shock absorbers 111 513 031 A/B/D ..	4	
-	111 513 475	Bolt, hex. head - Shock absorber up to chassis No. 1 - 397 022	2	



This is the last

improperly filled out special order form from a VW Contract Shop.
It was presented to a museum as a horrible example for posterity.



Each part is Factory Engineered and Inspected

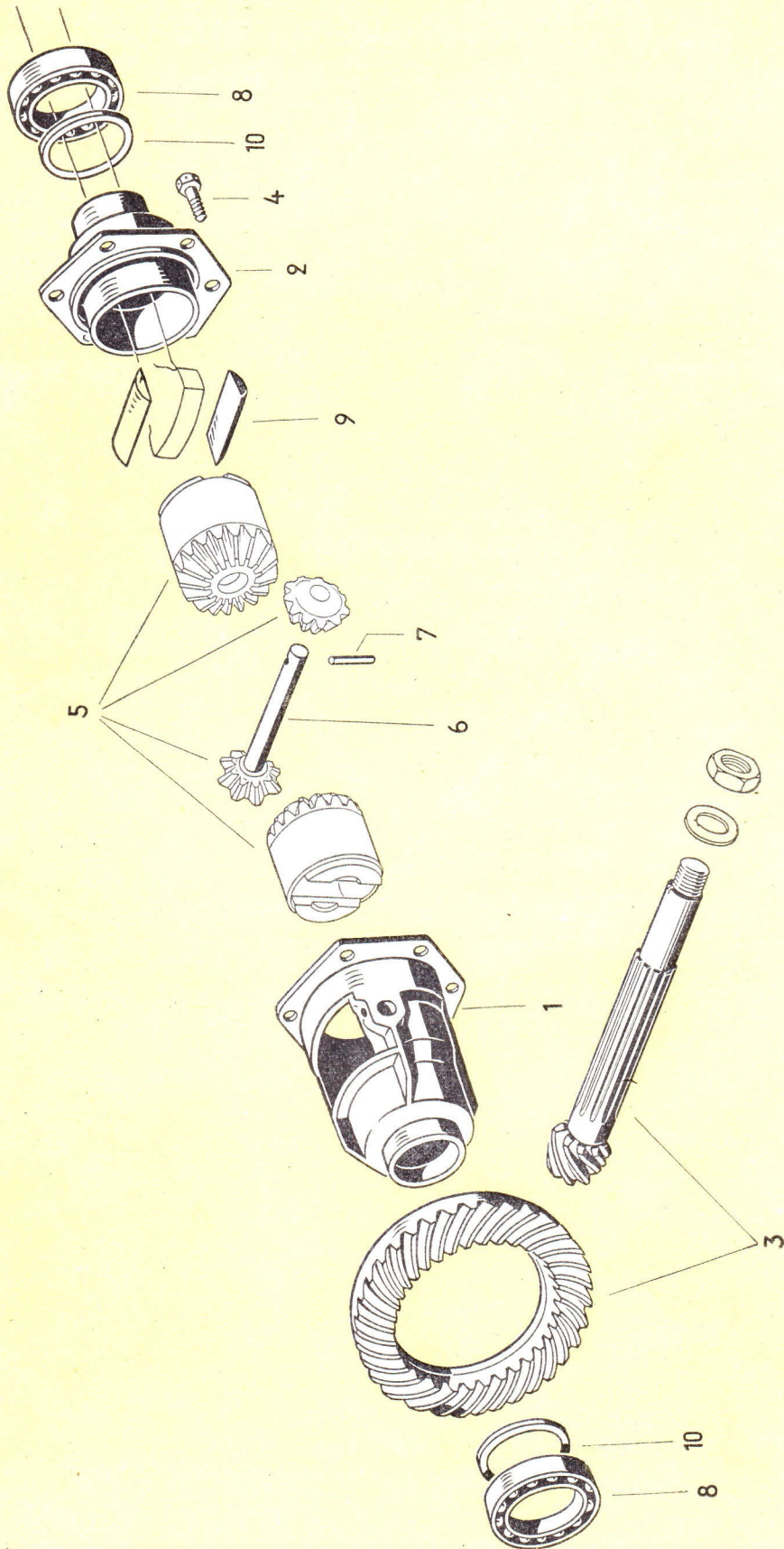


Illustration 18

Key No.	Part No.	Description	Quantity	Type and model
DIFFERENTIAL				
1	*111 517 121 A	Differential housing	1	
-	*111 517 135	Cover - Differential housing 111 517 121	1	
2	*111 517 135 A	Cover - Differential housing 111 517 121 A	1	
-	*111 517 141	Ring gear and drive pinion unit 7 : 31	1	111, 112, 115, 116
3	*113 517 141 B	Ring gear and drive pinion unit 7 : 31 (synchromesh)	1	113, 114, 117, 118, 151, 152
-	*111 517 145	Bolt, hex. head - Ring gear	6	(housing 111 517 121)
4	*111 517 145 A	Bolt, hex. head - Ring gear	6	(housing 111 517 121 A)
5	* SP 54 D	1 set of differential pinions	1	(quote color: blue, pink or green) <i>a.l.</i>
6	*111 517 177	Shaft - Differential pinion	1	
7	*111 517 181	Lock pin - Differential pinion shaft	1	
8	*111 517 185	Ball bearing - Differential	2	
-	111 517 187	Ball bearing (width 11 mm) - Differential	1	
9	*111 517 191 A	Fulcrum plate - Rear axle shaft	4	
-	*111 517 193	Fulcrum plate - Rear axle shaft (oversize)	x	
10	*111 517 201	Shim 2.9 mm - Differential	x	
-	*111 517 203	Shim 3.0 mm - Differential	x	
-	*111 517 205	Shim 3.1 mm - Differential	x	
-	*111 517 207	Shim 3.2 mm - Differential	x	
-	*111 517 209	Shim 3.3 mm - Differential	x	
-	*111 517 211	Shim 3.4 mm - Differential	x	
-	*111 517 213	Shim 3.5 mm - Differential	x	

Key No.	Part No.	Description	Quantity	Type and model
-	*111 517 215	Shim 3.6 mm – Differential	x	
-	*111 517 217	Shim 3.7 mm – Differential	x	
-	*111 517 219	Shim 3.8 mm – Differential	x	
-	*111 517 221	Shim 3.9 mm – Differential	x	
-	*111 517 223	Shim 4.0 mm – Differential	x	
-	*111 517 225	Shim 4.1 mm – Differential	x	
-	*111 517 227	Shim 4.2 mm – Differential	x	
-	*111 517 229	Shim 4.3 mm – Differential	x	
-	*111 517 231	Shim 4.4 mm – Differential	x	
-	*111 517 233	Shim 4.5 mm – Differential	x	
-	*111 517 245	Shim 0.25 mm	x	