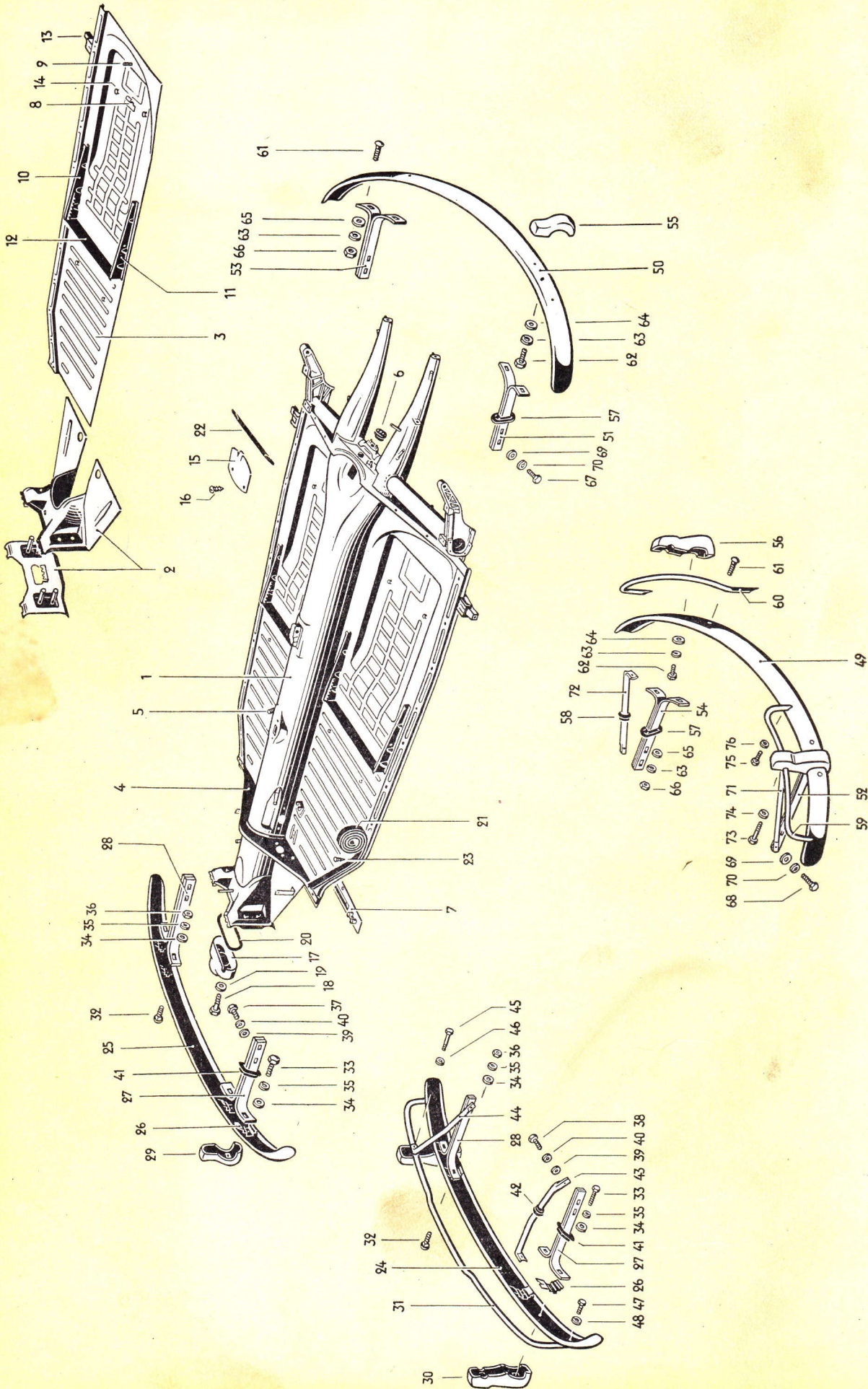


MAIN GROUP



	Illustration
01 Frame	22
07 Bumpers	22
11 Hand lever system	23
21 Pedal cluster up to chassis No. 1 600 439	24
21 Pedal cluster from chassis No. 1 600 440	25



Key No.	Part No.	Description	Quantity	Type and model
5/60	*111 701 255 C	Guide - Shifting rod	1	1
5/60	*111 701 259	Sleeve - Shifting rod guide	1	1
FRAME				
	<i>111 700 021 E</i>	<i>Superseded by 111 700 021 C AND 111 301 255 B</i>		
-	111 700 021	Frame assy. up to chassis No. 1 - 397 022	1	111, 115
-	111 700 021 A	Frame assy. from chassis No. 1 - 397 023 up to 1 - 929 745	1	111, 115
-	111-700 021 E	Frame assy. from chassis No. 1 - 929 746	1	111, 115
		<i>Order 111 700 021 B AND 111 301 255 B</i>		
-	112 700 021	Frame assy. (RHD) up to chassis No. 1 - 397 022	1	112, 116
-	112 700 021 A	Frame assy. (RHD) from chassis No. 1 - 397 023 up to 1 - 929 745	1	112, 116
-	112 700 021 B	Frame assy. (RHD) from chassis No. 1 - 929 746 up to 1 600 439	1	112, 116
-	112 700 021 C	Frame assy. (RHD) from chassis No. 1 600 440	1	112, 116
-	113 700 021 A	Frame assy. up to chassis No. 1 - 397 022	1	113, 117, 151
-	113 700 021 B	Frame assy. from chassis No. 1 - 397 023 up to 1 - 929 745	1	113, 117, 151
-	113-700 021 C	Frame assy. <i>Order 113 700 021 E</i> from chassis No. 1 - 929 746 up to 1 600 439	1	113, 117, 151
1	113 700 021 D	Frame assy. from chassis No. 1 600 440	1	113, 117, 151
-	114 700 021	Frame assy. (RHD) up to chassis No. 1 - 397 022 ..	1	114, 118, 152
-	114 700 021 A	Frame assy. (RHD) from chassis No. 1 - 397 023 up to 1 - 929 745	1	114, 118, 152
-	114 700 021 B	Frame assy. (RHD) <i>Order 114 700 021 D</i> from chassis No. 1 - 929 746 up to 1 600 439	1	114, 118, 152
-	114-700 021 C	Frame assy. (RHD) from chassis No. 1 600 440 <i>Order 114 700 021 D See For illustration</i>	1	114, 118, 152
-	N 14 420 1	Stud AM 10 B×32 up to chassis No. 1 600 439 ...	2	
-	111 701 037	Frame head	1	111, 112, 115, 116
2	113 701 037	Frame head	1	113, 114, 117, 118, 151, 152
-	111 701 061	Floorboard, left up to chassis No. 1 - 929 745	1	111, 112, 115, 116
-	111 701 061 B	Floorboard, left from chassis No. 1 - 929 746	1	111, 112, 115, 116
-	113-701 061	Floorboard, left up to chassis No. 1 - 929 745	1	113, 114, 117, 118, 151, 152
	<i>Order 113 701 059 B</i>			
1	111 701 060 A	Floor board, right <i>now supplied with frame bed plate</i> from chassis No. 1 - 929 745	1	111, 112, 115, 116
1	114 701 060 B	Floor board, right <i>new parts</i> up to chassis No. 1 - 929 745	1	113, 114, 117, 118, 151, 152

Key I	Quantity	Type and model
111 701 211	2	Extension - Hand brake cable conduit <i>See Tech Bulletin on frame hand lever system</i>
- 113 701 061 A	1	Floorboard, left from chassis No. 1 - 929 746 up to 1 600 439
- 113 701 061 B	1	Floorboard, left from chassis No. 1 600 440
111 701 062 <i>111 701 062</i>	1	Floorboard, right up to chassis No. 1 - 929 745 ...
- 111 701 062 B	1	Floorboard, right from chassis No. 1 - 929 746 ...
<i>Order</i> 112 701 062 112 701 062	1	Floorboard, right (RHD) up to chassis No. 1 - 929 745
- 112 701 062 A	1	Floorboard, right (RHD) from chassis No. 1 - 929 746 up to 1 600 439
<i>Order</i> 112 701 062-B 112 701 062-B	1	Floorboard, right (RHD) from chassis No. 1 600 440
<i>Order</i> 113 701 062 113 701 062	1	Floorboard, right up to chassis No. 1 - 929 745
3 113 701 062 B	1	Floorboard, right from chassis No. 1 - 929 746
- 114 701 062	1	Floorboard, right (RHD) up to chassis No. 1 - 929 745
- 114 701 062 A	1	Floorboard, right (RHD) from chassis No. 1 - 929 746 up to 1 600 439
- 114 701 062 B	1	Floorboard, right (RHD) from chassis No. 1 600 440
<i>Order</i> 4 113 701 135 113 701 135	1	Top part - Cross member front <i>ORDER 113 701 131</i>
<i>Order</i> 114 701 135 114 701 135	1	Top part - Cross member front (RHD)
- *111 701 241	1	Notch sleeve - Heating control cable up to chassis No. 1 - 397 022
5 *111 701 241 A	1	Guide sleeve - Heating control cable from chassis No. 1 - 397 023
- 111 701 247	2	Conduit, front - Brake cable
- 111 701 255 A 111 701 255	1	Guide - Shifting rod tube <i>SYNTHETIC BUSH. Replaces spring steel shift-rod guide S/W Bulletin M 52</i>
- 111 701 293 B	1	Rubber packing - Cable guide <i>B. to Kuffner's</i> up to chassis No. 1 - 397 022 <i>in shape</i>
6 111 701 293 A	1	Rubber packing - Cable guide from chassis No. 1 - 397 023
7 111 701 331		Bottom part - Cross member front <i>No. LOWER AVAILABLE</i>
8 111 701 409	1	Hook plate - Battery mounting <i>ORDER 111 701 409A</i>
112 701 060 B	1	Floor board right up to chassis No. 1 - 929 745 <i>Now BEING SUPPLIED WITH FRAME PLATE</i>

Key No.	Part No.	Description	Quantity	Type and model
9	111 701 415	Bolt – Battery mounting	1	
-	113 701 425	Lower sliding bar with ratchet	2	113, 117, 151
		up to chassis No. 1 – 929 745	1	114, 118, 152
10	113 701 425 A	Lower sliding bar with ratchet	2	113, 114, 117, 118, 151, 152
		from chassis No. 1 – 929 746		
	114-701-425 113 701 431	Lower sliding bar with ratchet (RHD)	1	114, 118, 152
		up to chassis No. 1 – 929 745		
-	113 701 431	Lower sliding bar without ratchet (elevated)	1	113, 117, 151
		up to chassis No. 1 – 929 745		
-	113 701 435	Lower sliding bar without ratchet	1	113, 117, 151
		up to chassis No. 1 – 929 745	2	114, 118, 152
11	113 701 435 A	Lower sliding bar without ratchet	2	113, 114, 117, 118, 151, 152
		from chassis No. 1 – 929 746		
12	113 701 445 A	Spacer – Sliding bars	2	113, 114, 117, 118, 151, 152
		from chassis No. 1 – 929 746		
-	111 701 455	Screw – Front seat mounting	4	111, 112, 115, 116
13	114 701 475	Socket – Jack <i>order 111 701 475 B</i>	2	
		<i>CHANGE IN PRODUCTION</i>		
-	111 701 495	Stud, lower part – Floorboard	8	
		up to chassis No. 1 – 929 745		
14	111 701 495 A	Stud, lower part – Floorboard	8	
		from chassis No. 1 – 929 746		
15	111 701 555 A	Inspection cover (frame fork)	1	
16	N 11 374 1	Metal screw, cheese head, S 3.9×13 DIN 7971	2	
17	113 701 565	Cover – Frame head	1	
18	N 10 349 1	Bolt, hex. head, BM 6×45 DIN 931	2	
19	N 11 695 2	Washer 6.1 galvanized	2	
20	111 701 571	Gasket – Frame head cover	1	
21	111 701 605	Weatherstrip between body and frame	1	
22	111 701 621	Additional frame sealing strip, rear	1	
23	111 701 625	Self-threading screw	36	
-	111 701 913	Bracket – Shock absorber mounting, left	1	
		(for optional fitting of telescopic shock absorbers)		

111 701 535

Insert:
Bracket on floor plate
(new part)

Key No.	Part No.	Description	Quantity	Type and model
-	111 701 914	Bracket – Shock absorber mounting, right (for optional fitting of telescopic shock absorbers)	1	
-	N 10 120 1	Bolt, hex. head, M 12×1.5×20 DIN 961	4	
-	N 12 012 1	Lock washer B 12 DIN 127	4	
BUMPERS				
-	111 707 111	Bumper, front up to chassis No. 1 – 397 022	1	111, 112, 115, 116
-	111 707 111 A	Bumper, front from chassis No. 1 – 397 023	1	111, 112, 115, 116
-	113 707 111	Bumper, front, chromium plated	1	113, 114, 117, 118, 151, 152
24	113 707 111 B	Bumper, front, chromium plated	1	
		(bumper guard)		
25	151 707 111	Bumper, front, chromium plated	1	113, 114, 117, 118, 151, 152
		from chassis No. 1 – 397 023		
26	111 707 121	Reinforcement – Bumper	4	
		from chassis No. 1 – 397 023		
-	111 707 135	Bracket – Bumper (front, left)	1	111, 112, 115, 116
		up to chassis No. 1 – 397 022		
27	111 707 135 A	Bracket – Bumper (front left)	1	
28	111 707 136 A	Bracket – Bumper (front right)	1	
-	111 707 155	Override – Bumper 111 707 111	2	111, 112, 115, 116
-	111 707 155 A	Override – Bumper 111 707 111 A	2	111, 112, 115, 116
-	113 707 155	Override – Bumper 113 707 111	2	113, 114, 117, 118, 151, 152
29	113 707 155 A	Override – Bumper 151 707 111	2	113, 114, 117, 118, 151, 152
30	113 707 155 B	Override – Bumper 113 707 111 B	2	
31	113 707 177	Guard – Bumper 113 707 111 B	1	
-	*111 707 191	Screw – Bumper 111 707 111	2	111, 112, 115, 116
-	111 707 191 A	Screw – Bumper 111 707 111 A	2	111, 112, 115, 116

Key No.	Part No.	Description	Quantity	Type and model
-	113 707 191	Screw – Bumper 113 707 111	2	113, 114, 117, 118, 151, 152
32	113 707 191 A	Screw – Bumpers 151 707 111/113 707 111 B	2	
-	N 10 325 1	Bolt, hex. head, BM 8×25 DIN 931	2	
33	N 10 246 1	Bolt, hex. head, M 8×45 DIN 933 galvanized	2	
34	N 11 696 1	Washer 8.1 galvanized	4	
35	N 12 008 2	Lock washer B 8 DIN 127 galvanized	4	
36	N 11 008 3	Nut, hex., M 8 DIN 934 galvanized	2	
37	N 10 241 1	Bolt, hex. head, M 8×22 DIN 933 galvanized	4	
38	N 10 244 1	Bolt, hex. head, M 8×30 DIN 933 galvanized	4	
39	N 11 670 1	Washer 8.1	4	
40	N 12 008 2	Lock washer B 8 DIN 127 galvanized	4	
41	111 707 197	Rubber – Bumper bracket front	2	
42	111 707 199	Seal – Overrider support	2	
43	113 707 233	Support, front, left – Overrider 113 707 155 B	1	
44	113 707 234	Support, front, right – Overrider 113 707 155 B	1	
45	N 10 350 2	Bolt, hex. head, BM 8×50 DIN 931 galvanized	2	
46	N 12 008 2	Lock washer B 8 DIN 127 galvanized	2	
47	N 10 252 1	Bolt, hex. head, M 10×20 DIN 933 galvanized	2	
48	N 12 010 2	Lock washer B 10 DIN 127 galvanized	2	
-	111 707 311	Bumper, rear up to chassis No. 1 – 397 022	1	111, 112, 115, 116
-	111 707 311 A	Bumper, rear from chassis No. 1 – 397 023	1	111, 112, 115, 116
-	113 707 311	Bumper, rear, chromium plated	1	113, 114, 117, 118, 151, 152
		up to chassis No. 1 – 397 022		

Key No.	Part No.	Description	Quantity	Type and model
49	113 707 311 B	Bumper, rear, chromium plated (bumper guard)	1	
50	151 707 311	Bumper, rear, chromium plated from chassis No. 1 - 397 023	1	113, 114, 117, 118, 151, 152
-	111 707 325	Bracket - Starting handle	1	111, 112, 115, 116
-	N 10 980 1	Screw, countersunk head, AM 5×10 DIN 63, high-polish galvanized - Starting handle bracket	2	111, 112, 115, 116
-	N 12 225 1	Spring washer B 5 DIN 137 galvanized	2	111, 112, 115, 116
-	N 11 005 2	Nut, hex., M 5 DIN 934 galvanized	2	111, 112, 115, 116
-	111 707 121	Reinforcement - Bumper from chassis No. 1 - 397 023	4	
51	111 707 335 A	Bracket - Bumper (rear left)	1	
52	111 707 335 B	Bracket - Bumper (rear left) for bumper 113 707 311 B	1	
53	111 707 336 A	Bracket - Bumper (rear right)	1	
54	111 707 336 B	Bracket - Bumper (rear right) for bumper 113 707 311 B	1	
-	111 707 155	Override - Bumper 111 707 311	2	111, 112, 115, 116
-	111 707 155 A	Override - Bumper 111 707 311 A	2	111, 112, 115, 116
-	113 707 155	Override - Bumper 113 707 311	2	113, 114, 117, 118, 151, 152
55	113 707 155 A	Override - Bumper 151 707 311	2	113, 114, 117, 118, 151, 152
56	113 707 155 B	Override - Bumper 113 707 311 B	2	
57	111 707 347	Rubber - Rear bumper bracket	2	
58	111 707 199	Seal - Override support	2	
59	113 707 385	Guard, rear, left - Bumper 113 707 311 B	1	
60	113 707 386	Guard, rear, right - Bumper 113 707 311 B	1	
-	*111 707 191	Screw - Bumper 111 707 311	2	111, 112, 115, 116
-	111 707 191 A	Screw - Bumper 111 707 311 A	4	111, 112, 115, 116

Key No.	Part No.	Description	Quantity	Type and model
-	113 707 191	Screw – Bumper 113 707 311	2	113, 114, 117, 118, 151, 152
61	113 707 191 A	Screw – Bumpers 151 707 311/113 707 311 B	4	
-	N 10 325 1	Bolt, hex. head, BM 8×25 DIN 931	2	
62	N 10 244 1	Bolt, hex. head, M 8×30 DIN 933 galvanized	2	
63	N 12 008 2	Lock washer B 8 DIN 127 galvanized	6	
64	N 11 654 2	Washer 9.5 galvanized	2	
65	N 11 696 1	Washer 8.1 galvanized .. <i>111 821 149 A</i>	4	
66	N 11 008 3	Nut, hex., M 8 DIN 934 galvanized	4	
67	N 10 241 1	Bolt, hex. head, M 8×22 DIN 933 galvanized	4	
68	N 10 244 1	Bolt, hex. head, M 8×30 DIN 933 galvanized	4	
69	N 11 670 1	Washer 8.1	4	
70	N 12 008 2	Lock washer B 8 DIN 127 galvanized	4	
71	113 707 391	Support, rear, left – Override 113 707 155 B	1	
72	113 707 392	Support, rear, right – Override 113 707 155 B	1	
73	N 10 350 2	Bolt, hex. head, BM 8×50 DIN 931 galvanized	2	
74	N 12 008 2	Lock washer B 8 DIN 127 galvanized	2	
75	N 10 252 1	Bolt, hex. head, M 10×20 DIN 933 galvanized	4	
76	N 12 010 2	Lock washer B 10 DIN 127 galvanized	4	

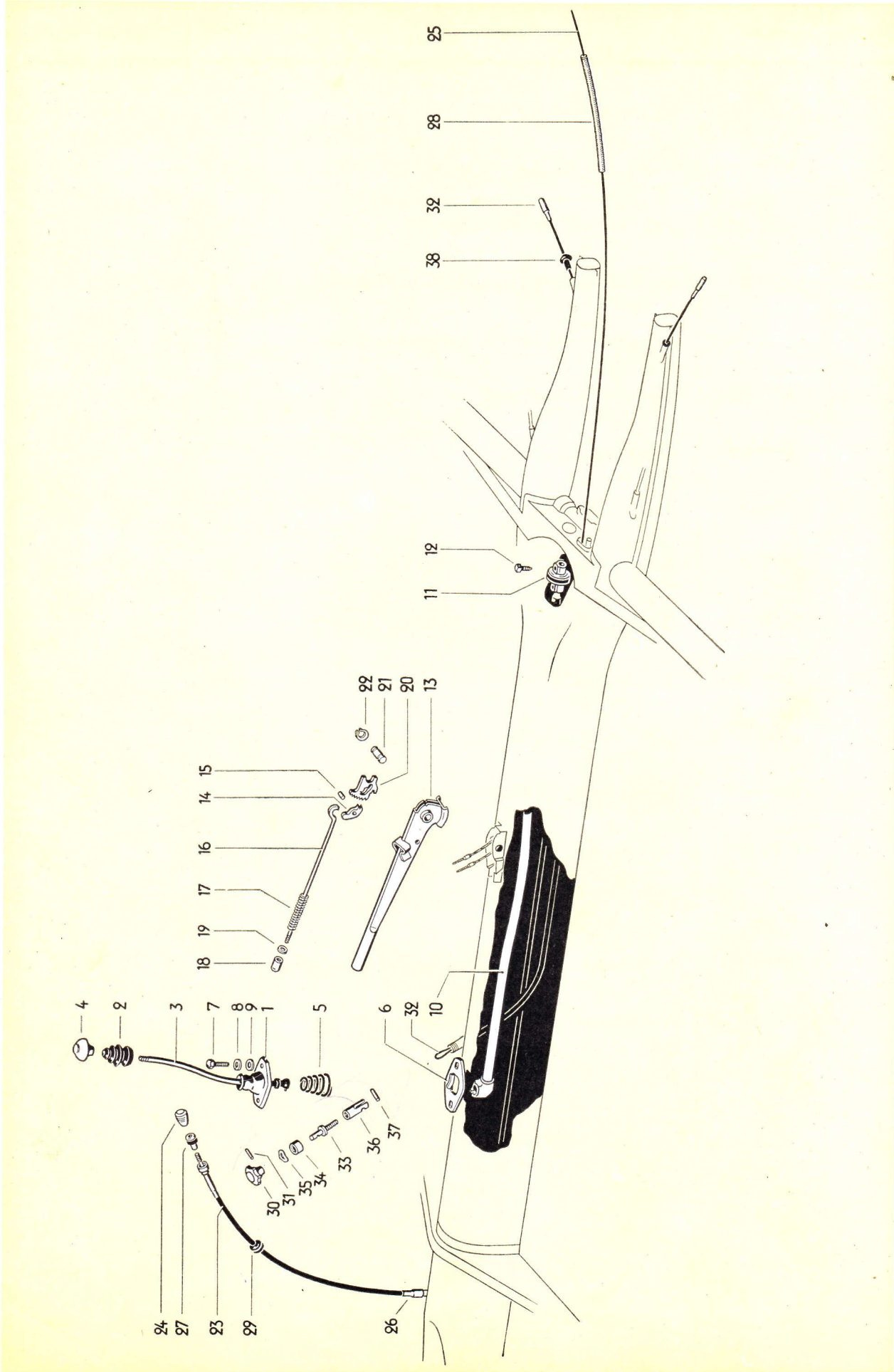


Illustration 23

Key No.	Part No.	Description	Quantity	Type and model
HAND LEVER SYSTEM				
-	*211 711 105	Ball housing – Gearshift lever up to chassis No. 1 – 397 022	1	
1	111 711 105	Ball housing – Gearshift lever from chassis No. 1 – 397 023	1	
2	*111 711 115	Rubber boot – Gearshift lever	1	
-	111 711 121	Gearshift lever up to chassis No. 1 – 397 022	1	
-	111 711 121 A	Gearshift lever from chassis No. 1 – 397 023 up to 1 – 929 745	1	
3	111 711 121 B	Gearshift lever from chassis No. 1 – 929 746	1	
-	*111 711 141	Knob (black) – Gearshift lever	1	111, 112, 115, 116
4	*113 711 141	Knob (ivory) – Gearshift lever	1	113, 114, 117, 118, 151, 152
-	*211 711 145	Spring – Gearshift lever up to chassis No. 1 – 397 022	1	
5	111 711 145 A	Spring – Gearshift lever from chassis No. 1 – 397 023	1	
6	*111 711 149	Stop – Gearshift lever	1	
7	N 10 240 1	Bolt, hex. head, M 8×20 DIN 931	2	
8	N 12 228 2	Spring washer B 8 DIN 137 galvanized	2	
9	N 11 654 2	Washer 9.5 galvanized	2	
-	111 711 155	Gearshift rod up to chassis No. 1 – 397 022	1	
-	111 711 155 A	Gearshift rod from chassis No. 1 – 397 023 up to 1 – 929 745	1	
10	111 711 155 B	Gearshift rod from chassis No. 1 – 929 746	1	
11	*111 711 175 A	Coupling – Gearshift rod <i>111 711 175 B</i>	1	
12	*111 711 189	Screw – Gearshift rod coupling	2	
-	111 711 305	Lever – Hand brake	1	
13	113 711 305	Lever – Hand brake from chassis No. 1 – 929 746 ..	1	113, 114, 117, 118, 151, 152

Key No.	Part No.	Description	Quantity	Type and model
14	*111 711 321	Pawl – Hand brake	1	
15	*111 711 323	Pin – Hand brake pawl	1	
16	*111 711 325	Rod – Hand brake pawl	1	
17	*111 711 329	Spring – Pawl rod	1	
-	*111 711 333 A	Release button (black) – Hand brake lever	1	111, 112, 115, 116
18	*113 711 333 A	Release button (ivory) – Hand brake lever	1	113, 114, 117, 118, 151, 152
19	*111 711 335	Washer – Hand brake lever	1	
-	*111 711 339	Sector – Hand brake	1	
20	*211 711 339	Sector – Hand brake	1	113, 114, 117, 118, 151, 152
-	*111 711 341	Pin – Hand brake lever	1	
-	N 12 415 1	Lockring 15×1 DIN 471	2	
21	113 711 341	Pin – Hand brake lever	1	113, 114, 117, 118, 151, 152
22	N 12 460 1	Circlip 14 DIN 9045	2	113, 114, 117, 118, 151, 152
-	111 711 355	Push bar	1	111, 112, 115, 116
-	113 711 355	Push bar up to chassis No. 1 – 929 745	1	113, 114, 117, 118, 151, 152
-	111 711 369	End piece – Push bar	1	
-	113 711 375	Spring – Push bar up to chassis No. 1 – 929 745	1	113, 114, 117, 118, 151, 152
-	113 711 377	Guide plate – Brake push bar	1	113, 114, 117, 118, 151, 152
-	113 711 377 A	Guide plate – Brake push bar	1	113, 114, 117, 118, 151, 152
-	N 12 226 2	Spring washer B 6 DIN 137 galvanized	2	113, 114, 117, 118, 151, 152
-	N 10 212 2	Bolt, hex. head, M 6×12 DIN 933 galvanized	2	113, 114, 117, 118, 151, 152
-	113 711 381	Junction head – Push bar	1	113, 114, 117, 118, 151, 152

Key No.	Part No.	Description	Quantity	Type and model
-	113 711 385 A	Lock plate – Junction head up to chassis No. 1 – 929 745	1	113, 114, 117, 118, 151, 152
-	111 721 199	Plate – Junction head up to chassis No. 1 – 929 745	1	113, 114, 117, 118, 151, 152
-	N 12 518 1	Split pin 2×18 DIN 94 up to chassis No. 1 – 929 745	1	113, 114, 117, 118, 151, 152
-	113 711 387	Washer – Push bar up to chassis No. 1 – 929 745 ..	1	113, 114, 117, 118, 151, 152
-	413 711 497 241 711 505	Cable – Choke control, ivory (length 2420 mm) .. up to chassis No. 1 – 397 022	1	
-	111 711 501	Cable – Choke control (length 3770 mm) from chassis No. 1 – 397 023 up to 1 – 459 216	1	
23	111 711 501 A	Cable – Choke control (length 3770 mm) from chassis No. 1 – 459 217	1	
-	111 711 501 B	Cable – Choke control (length 3540 mm) (modification) up to chassis No. 1 – 397 022	1	
-	*111 941 541	Knob – Choke control cable (black) from chassis No. 1 – 397 023	1	111, 112, 115, 116
24	*113 941 541	Knob – Choke control cable (ivory) from chassis No. 1 – 397 023	1	113, 114, 117, 118, 151, 152
25	111 711 505 A <i>111 711 505</i>	Cable for choke 111 711 501/A <i>To simplify STURGE.</i>	1	
26	111 711 515	Sealing sleeve B 7.2×8.4 for choke control cable 111 711 501 A	1	
27	111 711 517	Escutcheon with rubber washer – Choke cable 111 711 501 A	1	
28	*111 711 531	Sleeve – Choke control cable 1	1	
29	*111 711 535	Grommet – Choke control cable (through panel)	1	
-	111 711 537	Bracket – Choke control knob (modification) up to chassis No. 1 – 397 022	1	
-	111 711 605	Cable – Heating control (single control) (length 1696 mm)	1	111, 112
-	113 711 607	Cable – Heating control (dual control) (length 1696/1620 mm) up to chassis No. 1 – 162 443	1	
-	113 711 607 A	Cable – Heating control (with ivory knob) (dual control, length 1614/1538 mm) up to chassis No. 1 – 162 443	1	
-	*111 711 611	Knob (black) – Heating control cable from chassis No. 1 – 162 444 up to 1 – 397 022	1	
-	*111 711 623 A	Knob black – Heating control cable 1	1	111, 112, 115, 116

Key No.	Part No.	Description	Quantity	Type and model
30	*113 711 623 A	Knob ivory – Heating control cable	1	113, 114, 117, 118, 151, 152
31	N 12 829 1 N 12 328 1	Grooved pin, self-locking 3×16 DIN 1475 ^{3.20 DIN 1481}	1	
-	111 711 629	Cable – Heating control (length 2843 mm.)	1	
		from chassis No. 1 – 162 444 up to 1 – 243 730		
-	111 711 629 A	Cable – Heating control (length 2668 mm.)	1	
		from chassis No. 1 – 243 731 up to 1 – 929 745		
32	111 711 629 B	Cable – Heating control (length 3660 mm.)	1	
		from chassis No. 1 – 929 746		
-	*111 711 655 A	Bolt – Heating control cable	1	
		from chassis No. 1 – 162 444 up to 1 – 397 022		
33	*111 711 671 A	Spindle – Heating control cable	1	
34	*111 711 675	Cap – Heating control cable	1	
35	*111 711 677	Spring washer	1	
36	*111 711 681	Clevis – Heating control cable	1	
37	N 13 216 1	Dowel pin 4×14 DIN 7	1	
-	*111 711 687	Retaining spring –	1	
		Choke and heating control cables (single control)		
38	*111 711 691	Plug	2	

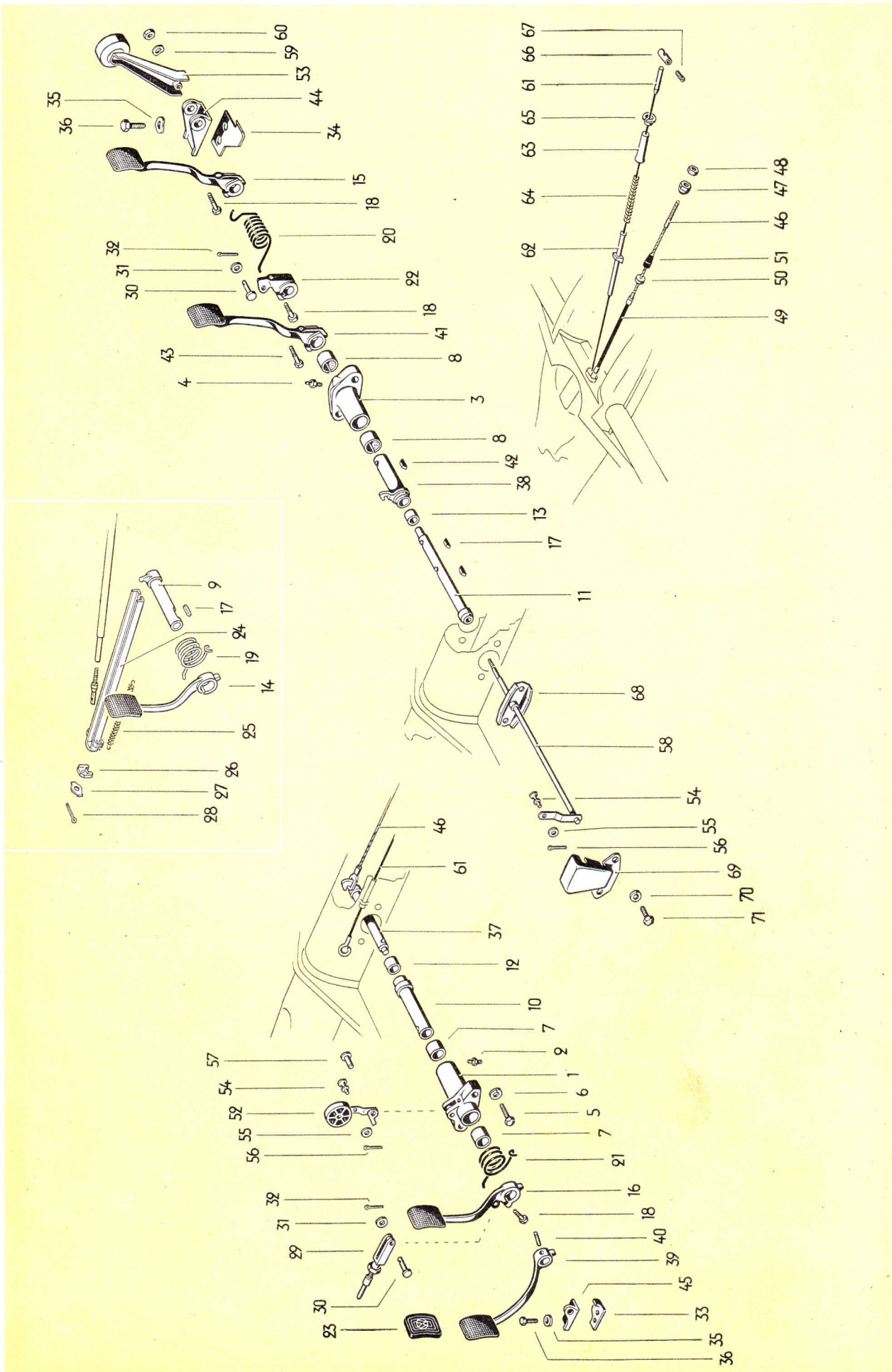


The Volkswagen breed

must be kept pure. No matter what part you need for maintenance, it must be a Genuine VW Part, a Part with a Pedigree, in order to keep all VW owners and drivers among your contented customers.



Each part is Factory Engineered and Inspected



Key No.	Part No.	Description	Quantity	Type and model
PEDAL CLUSTER up to chassis No. 1 600 439				
1	111 721 105	Housing – Brake pedal shaft	1	111, 113, 115, 117, 151
2	N 18 515 1	Grease nipple	1	111, 113, 115, 117, 151
3	112 721 105	Housing – Brake pedal shaft (RHD)	1	112, 114, 116, 118, 152
4	N 18 530 1	Grease nipple	1	112, 114, 116, 118, 152
5	N 10 430 1	Bolt, hex. head, BM 10×30 K DIN 931	2	
6	N 12 230 2	Spring washer B 10 DIN 137 galvanized	2	
–	111 721 113	Bush – Brake pedal shaft	2	111, 113
		up to chassis No. 1 – 102 536		
7	111 721 113 A	Bush – Brake pedal shaft	2	111, 113, 115, 117, 151
		from chassis No. 1 – 102 537		
8	112 721 113	Bush – Clutch pedal shaft (RHD)	2	112, 114, 116, 118, 152
9	111 721 121	Shaft – Brake pedal	1	111, 115
–	112 721 121 A	Shaft – Brake pedal (RHD)	1	112, 116
10	113 721 121	Shaft – Brake pedal	1	113, 117, 151
11	114 721 121	Shaft – Brake pedal (RHD)	1	114, 118, 152
12	111 721 137	Bush – Clutch pedal shaft	1	111, 113, 115, 117, 151
13	112 721 137	Bush – Brake pedal shaft (RHD)	1	112, 114, 116, 118, 152
14	111 721 151 A	Pedal – Brake	1	111, 115
15	112 721 151	Pedal – Brake (RHD)	1	112, 114, 116, 118, 152
–	113 721 151	Pedal – Brake up to chassis No. 1 – 397 022	1	113, 117, 151
16	113 721 151 A	Pedal – Brake from chassis No. 1 – 397 023	1	113, 117, 151
17	*111 721 157	Key – Brake pedal shaft	1	111, 112, 115, 116
			2	114, 118, 152
18	N 10 335 1	Bolt, hex. head, M 8×35 DIN 931	1	111, 113, 115, 117, 151
			2	112, 114, 116, 118, 152

Key No.	Part No.	Description	Quantity	Type and model
19	111 721 163	Return spring – Brake pedal	1	111, 115
20	112 721 163	Return spring – Brake pedal (RHD)	1	112, 114, 116, 118, 152
21	113 721 163	Return spring – Brake pedal	1	113, 117, 151
-	112 721 167	Spacer (RHD)	1	112, 116
22	114 721 171	Brake lever on brake pedal shaft (RHD)	1	114, 118, 152
23	*111 721 173	Rubber pad – Brake and clutch pedals	2	
24	111 721 175	Push bar – Foot brake	1	111, 112, 115, 116
25	111 721 191	Return spring – Foot brake push bar	1	111, 112, 115, 116
26	111 721 195	Cover – Brake cable junction head	1	111, 112, 115, 116
27	111 721 199	Plate – Junction head	1	111, 112, 115, 116
28	N 12 518 1	Split pin 2×18 DIN 94	1	111, 112, 115, 116
-	113 721 205	Push bar 8 mm dia. – Master cylinder 22	1	113, 117, 151
29	113 721 205 A	Push bar 7 mm dia. – Master cylinder 19	1	113, 114, 117, 118, 151, 152
30	111 721 219	Bolt – Push rod	1	113, 114, 117, 118, 151, 152
31	N 11 558 1	Washer 8.4 DIN 433	1	113, 114, 117, 118, 151, 152
32	N 12 512 1	Split pin 2×12 DIN 94	1	113, 114, 117, 118 151, 152
33	111 721 231 A	Stop – Brake pedal	1	111, 113, 115, 117, 151
34	112 721 231	Stop – Brake and clutch pedals (RHD)	2	112, 114, 116, 118, 152
35	N 12 228 2	Spring washer B 8 DIN 137 galvanized	2 4	111, 113, 115, 117, 151 112, 114, 116, 118, 152
36	N 10 239 1	Bolt, hex. head, M 8×18 DIN 933	2 4	111, 113, 115, 117, 151 112, 114, 116, 118, 152
-	111 721 305	Shaft – Clutch pedal	1	111, 113, 115, 117, 151
		up to chassis No. 1 – 397 022		
37	111 721 305 A	Shaft – Clutch pedal	1	111, 113, 115, 117, 151
		from chassis No. 1 – 397 023		

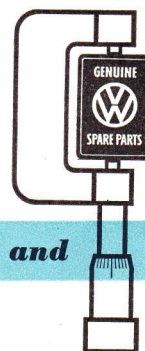
Key No.	Part No.	Description	Quantity	Type and model
	111721349A	ADJUSTING		
38	112 721 305	Shaft – Clutch pedal (RHD)	1	112, 114, 116, 118, 152
39	111 721 321	Pedal – Clutch	1	111, 113, 115, 117, 151
40	N 12 826 1	Grooved pin, self-locking 6×25 DIN 1475	1	111, 113, 115, 117, 151
41	112 721 321 A	Pedal – Clutch (RHD)	1	112, 114, 116, 118, 152
42	111 721 157	Key – Clutch pedal shaft	1	112, 114, 116, 118, 152
43	N 10 335 1	Bolt, hex. head, M 8×35 DIN 931	1	112, 114, 116, 118, 152
44	112 721 325	Bracket – Accelerator pedal shaft (RHD)	1	112, 114, 116, 118, 152
45	111 721 329	Bracket – Clutch pedal shaft	1	111, 113, 115, 117, 151
46	111 721 335 A	Cable – Clutch (length 2268 mm)	1	
47	*111 721 349	Adjusting nut – Clutch cable	1	
48	N 11 006 2	Nut, hex., M 6 DIN 934 galvanized	1	
	*111 721 355	Coupling – Clutch cable	1	
49	*111 721 361	Sleeve – Clutch cable	1	
50	*111 513 479	Washer	x	
51	*211 721 365	Rubber sleeve – Clutch cable	1	
52	111 721 507	Pedal – Accelerator	1	111, 113, 115, 117, 151
53	112 721 507	Pedal – Accelerator (RHD)	1	112, 114, 116, 118, 152
54	*111 721 529 A	Bolt front – Accelerator cable	1	
55	N 11 651 1	Washer 5.8 galvanized	1	
56	N 12 512 1	Split pin 2×12 DIN 94	1	
-	111 721 535	Bolt with thread shoulder – Accelerator pedal	1	111, 113, 115, 117, 151
57	111 721 535 A	Bolt – Accelerator pedal	1	111, 113, 115, 117, 151

Key No.	Part No.	Description	Quantity	Type and model
58	112 721 539	Accelerator pedal shaft (RHD)	1	112, 114, 116, 118, 152
59	N 12 226 2	Spring washer B 6 DIN 137 galvanized	1	112, 114, 116, 118, 152
60	N 11 006 2	Nut, hex., M 6 DIN 934 galvanized	1	112, 114, 116, 118, 152
-	111 721 555	Cable - Accelerator (length 2660 mm.)	1	
		up to chassis No. 1 - 397 022		
61	111 721 555 A	Cable - Accelerator (length 2630 mm.)	1	
		from chassis No. 1 - 397 023		
62	*111 721 567	Conduit - Accelerator cable	1	
63	*111 721 571	Tube - Accelerator cable spring	1	
		" " " "		
64	*111 721 575 A	Spring - Accelerator cable	1	
65	*111 721 577	Spring seat	1	
66	*111 721 581	Attachment - Accelerator cable (rear)	1	
67	N 13 105 1	Grub screw M 5×5 DIN 551	1	
68	112 721 585	Support - Accelerator pedal shaft	1	112, 114, 116, 118, 152
		(on frame) (RHD)		
69	112 721 595	Cover plate - Accelerator cable (RHD)	1	112, 114, 116, 118, 152
70	N 12 230 2	Spring washer B 10 DIN 137 galvanized	2	112, 114, 116, 118, 152
71	N 10 249 1	Bolt, hex. head, M 10×15 DIN 933	2	112, 114, 116, 118, 152

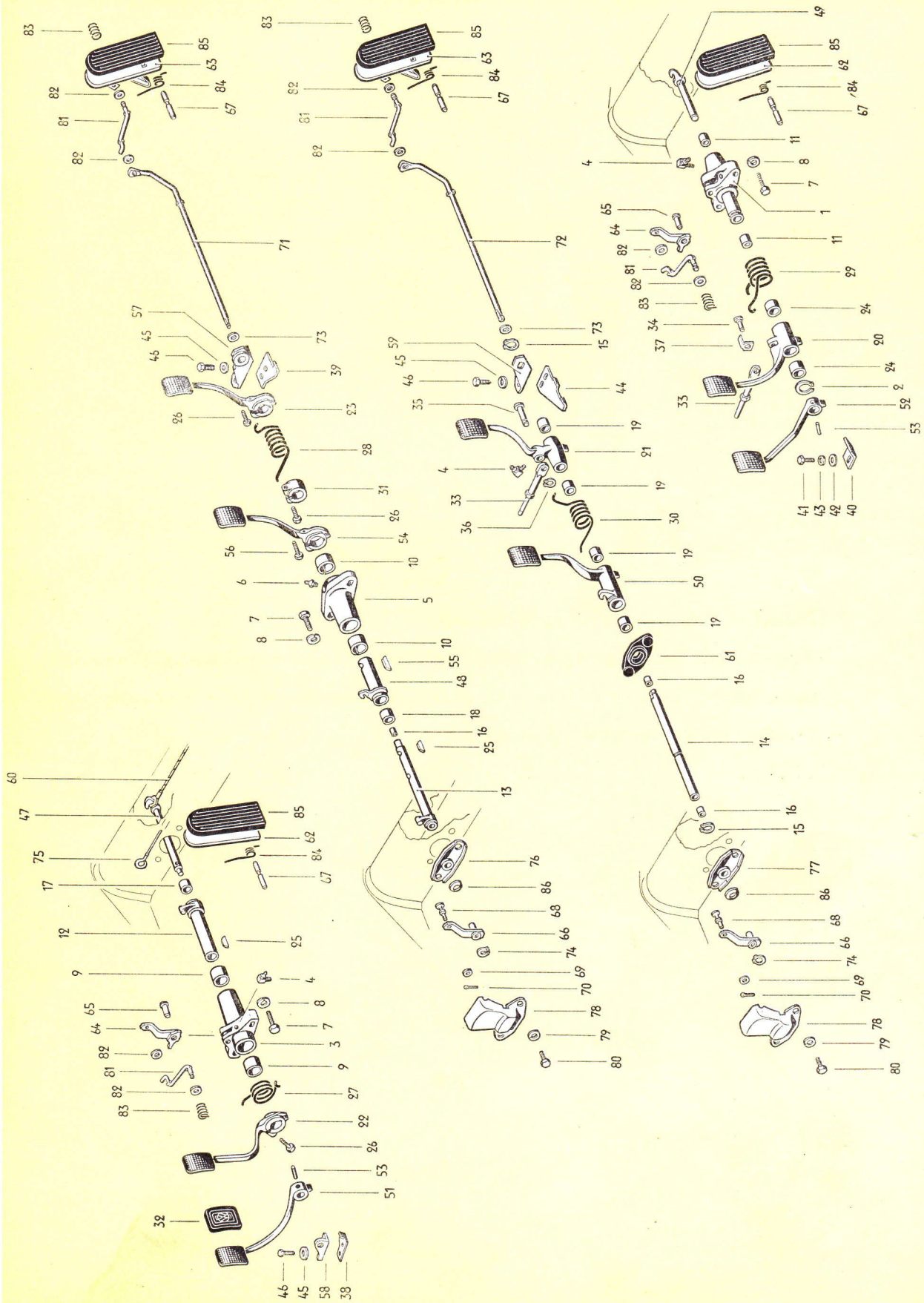


Puzzle: Where is the salesman?

Where indeed? Gone to get a part from the stockroom? Out for a quick smoke? Discussing the racing results? We don't care where he is. He's not where he belongs — behind the counter. Customers expect to be waited on promptly.



Each part is Factory Engineered and Inspected



Key No.	Part No.	Description	Quantity	Type and model
PEDAL CLUSTER from chassis No. 1 600 440				
1	113 721 071	Pedal bearing bracket	1	113, 117, 151
2	N 12 424 1	Lockring 24×1.2 DIN 471	1	113, 117, 151
3	111 721 105 A	Housing – Brake pedal shaft	1	111, 115
4	N 18 512 1	Grease nipple C 6×1	1	111, 113, 114, 115, 117, 118, 151, 152
5	112 721 105	Housing – Brake pedal shaft (RHD)	1	112, 116
6	N 18 530 1	Grease nipple	1	112, 116
7	N 10 430 1	Bolt, hex. head, BM 10×30 K DIN 931	2	111, 112, 113, 115, 116, 117, 151
8	N 12 230 2	Spring washer B 10 DIN 137 galvanized	2	111, 112, 113, 115, 116, 117, 151
9	111 721 113 A	Bush – Brake pedal shaft	2	111, 115
10	112 721 113	Bush – Clutch pedal shaft (RHD)	2	112, 116
11	113 721 113	Bush – Clutch pedal shaft	2	113, 117, 151
12	111 721 121	Shaft – Brake pedal	1	111, 115
13	112 721 121 A	Shaft – Brake pedal (RHD)	1	112, 116
14	114 721 121 A	Mounting tube – Pedal cluster (RHD)	1	114, 118, 152
15	N 12 418 1	Lockring 18×1.2 DIN 471	2	114, 118, 152
16	112 721 127	Bush – Accelerator pedal shaft (RHD)	2	114, 118, 152
			1	112, 116
17	111 721 137	Bush – Clutch pedal shaft	1	111, 115
18	112 721 137	Bush – Brake pedal shaft (RHD)	1	112, 116
19	114 721 137	Bush – Brake and clutch pedals (RHD)	4	114, 118, 152
20	113 721 141	Pedal – Brake	1	113, 117, 151
21	114 721 141	Pedal – Brake (RHD)	1	114, 118, 152

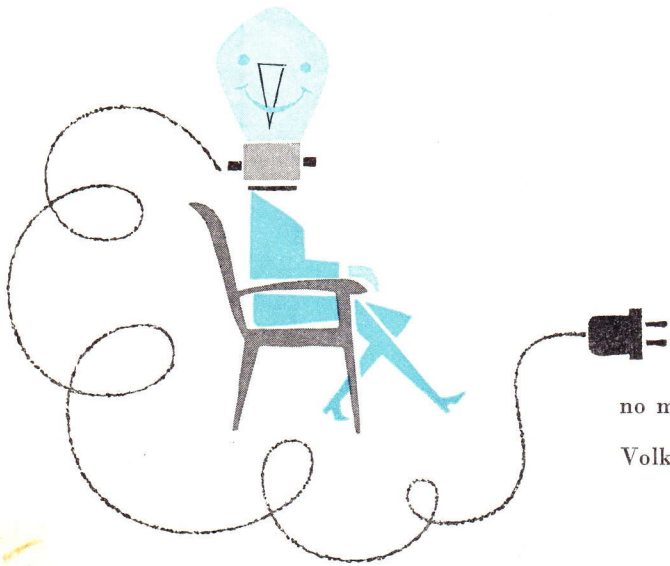
Key No.	Part No.	Description	Quantity	Type and model
22	111 721 151 A	Pedal – Brake	1	111, 115
23	112 721 151 A	Pedal – Brake (RHD)	1	112, 116
24	113 721 153	Bush – Brake pedal	2	113, 117, 151
25	*111 721 157	Key – Brake pedal shaft	1	111, 112, 115, 116
26	N 10 335 1	Bolt, hex. head, M 8×35 DIN 931	1 2	111, 115 112, 116
27	111 721 163	Return spring – Brake pedal	1	111, 115
28	112 721 163	Return spring – Brake pedal (RHD)	1	112, 116
29	113 721 163 A	Return spring – Brake pedal	1	113, 117, 151
30	114 721 163	Return spring – Brake pedal (RHD)	1	114, 118, 152
31	112 721 167	Spacer (RHD)	1	112, 116
32	*111 721 173	Rubber pad – Brake and clutch pedals	2	
-	111 721 175	Push bar – Foot brake	1	111, 112, 115, 116
-	111 721 191	Return spring – Foot brake push bar	1	111, 112, 115, 116
-	111 721 195	Cover – Brake cable junction head	1	111, 112, 115, 116
-	111 721 199	Plate – Junction head	1	111, 112, 115, 116
-	N 12 518 1	Split pin 2×18 DIN 94	1	111, 112, 115, 116
33	113 721 205 B	Push rod – Master cylinder	1	113, 114, 117, 118, 151, 152
34	113 721 219	Bolt – Push rod	1	113, 117, 151
35	114 721 219	Bolt – Push rod (RHD)	1	114, 118, 152
36	N 12 411 1	Lockring 11×1 DIN 471	1	114, 118, 152
37	113 721 221	Lock plate – Bolt	1	113, 117, 151
38	111 721 231 A	Stop – Brake pedal	1	111, 115

Key No.	Part No.	Description	Quantity	Type and model
39	112 721 231	Stop – Brake and clutch pedals (RHD)	2	112, 116
40	113 721 231	Stop – Pedal	1	113, 117, 151
41	N 10 238 1	Bolt, hex. head, M 8×15 DIN 933	1	113, 117, 151
42	N 11 526 2	Washer B 8.4 DIN 125, high-polish galvanized ...	1	113, 117, 151
43	N 12 008 2	Lock washer B 8 DIN 127 galvanized	1	113, 117, 151
44	114 721 231	Stop – Brake and clutch pedals (RHD)	1	114, 118, 152
45	N 12 228 2	Spring washer B 8 DIN 137 galvanized	2 4	111, 114, 115, 118, 152 112, 116
46	N 10 239 1	Bolt, hex. head, M 8×18 DIN 933	2 4	111, 114, 115, 118, 152 112, 116
47	111 721 305 A	Shaft – Clutch pedal	1	111, 115
48	112 721 305	Shaft – Clutch pedal (RHD)	1	112, 116
49	113 721 305	Shaft – Clutch pedal	1	113, 117, 151
50	114 721 319	Pedal – Clutch (RHD)	1	114, 118, 152
51	111 721 321	Pedal – Clutch	1	111, 115
52	113 721 321	Pedal – Clutch	1	113, 117, 151
53	N 12 826 1	Grooved pin, self-locking 6×25 DIN 1475	1	111, 113, 115, 117, 151
54	112 721 321 A	Pedal – Clutch (RHD)	1	112, 116
55	111 721 157	Key – Clutch pedal shaft	1	112, 116
56	N 10 335 1	Bolt, hex. head, M 8×35 DIN 931	1	112, 116
57	112 721 325 A	Bracket – Brake pedal shaft (RHD)	1	112, 116
58	111 721 329	Bracket – Pedal cluster	1	111, 115
59	114 721 329	Bracket – Pedal cluster (RHD)	1	114, 118, 152
60	111 721 335 A	Cable – Clutch (length 2268 mm)	1	
	111721335 B	<i>Clutch cable threaded end piece from M10 to M6</i>		

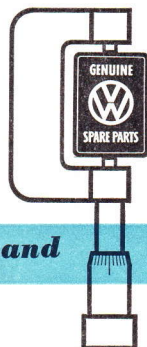
Key No.	Part No.	Description	Quantity	Type and model
-	*111 721 349	Adjusting nut - Clutch cable	1	
	<i>111 721 349 A</i>	<i>adjusting nut M7 Clutch Cable</i>		
-	N 11 006 2	Nut, hex., M 6 DIN 934 galvanized	1	
-	*111 721 355	Coupling - Clutch cable	1	
-	*111 721 361	Sleeve - Clutch cable <i>ORDER 111 721 361 A</i>	1	
-	*111 513 479	Washer	×	
	*241-721-365	Rubber sleeve - Clutch cable	1	
	<i>111 721 365</i>			
61	114 721 391	Gasket - Foot lever system (RHD)	1	114, 118, 152
62	111 721 507 A	Pedal - Accelerator	1	111, 113, 115, 117, 151
63	112 721 507 A	Pedal - Accelerator (RHD)	1	112, 114, 116, 118, 152
64	111 721 509 A	Lever - Accelerator cable connecting	1	111, 113, 115, 117, 151
65	N 13 240 1	Bolt 8×18 DIN 1434	1	111, 113, 115, 117, 151
66	112 721 509 A	Lever - Accelerator cable connecting (RHD)	1	112, 114, 116, 118, 152
67	111 721 525 A	Bolt - Accelerator pedal mounting	1	
68	*111 721 529 A	Bolt front - Accelerator cable	1	112, 114, 116, 118, 152
69	N 11 651 1	Washer 5.8 galvanized	1	112, 114, 116, 118, 152
70	N 12 512 1	Split pin 2×12 DIN 94	1	112, 114, 116, 118, 152
71	112 721 545 A	Accelerator pedal shaft (RHD)	1	112, 116
72	114 721 545	Accelerator pedal shaft (RHD)	1	114, 118, 152
73	N 11 526 2	Washer B 8.4 DIN 125 high-polish galvanized ...	1	112, 114, 116, 118, 152
74	N 12 408 1	Lockring 8×0.8 DIN 471	1	112, 114, 116, 118, 152
-	111 721 555 A	Cable - Accelerator (length 2630 mm)	1	112, 114, 116, 118, 152
75	111 721 555 B	Cable - Accelerator (length 2640 mm)	1	111, 113, 115, 117,
	111 721 555 C	Cable - Accelerator (length 2645 mm) from chassis No. 2 528 668	1	111, 113, 115, 117, 151

END PIPE LENGTHENED

Key No.	Part No.	Description	Quantity	Type and model
-	*111 721 567	Conduit - Accelerator cable (rear)	1	
-	*111 721 571	Tube - Accelerator cable spring	1	
-	*111 721 575 A	Spring - Accelerator cable	1	
-	*111 721 577	Spring seat	1	
-	*111 721 581	Attachment - Accelerator cable (rear)	1	
-	N 13 105 1	Grub screw M 5×5 DIN 551	1	
76	112 721 585 A	Bearing - Accelerator lever (RHD)	1	112, 116
77	114 721 585	Bearing - Mounting tube (RHD)	1	114, 118, 152
78	112 721 595 A	Cover plate - Accelerator cable (RHD)	1	112, 114, 116, 118, 152
79	N 12 230 2	Spring washer B 10 DIN 137 galvanized	2	112, 114, 116, 118, 152
80	N 10 249 1	Bolt, hex. head, M 10×15 DIN 933	2	112, 114, 116, 118, 152
81	111 721 615	Push rod - Accelerator pedal	1	
82	N 11 557 1	Washer 6.4 DIN 433	2	
83	*211 721 617	Compression spring - Accelerator pedal push rod	1	
84	111 721 619	Return spring - Accelerator pedal	1	
85	113 721 647	Rubber pad - Accelerator pedal	1	
86	114 721 699	Spring washer - Accelerator pedal shaft (RHD) ..	1	112, 114, 116, 118, 152



Every bulb,
no matter who makes it, is tested at the
Volkswagen factory.



Each part is Factory Engineered and Inspected