

Instruction Manual

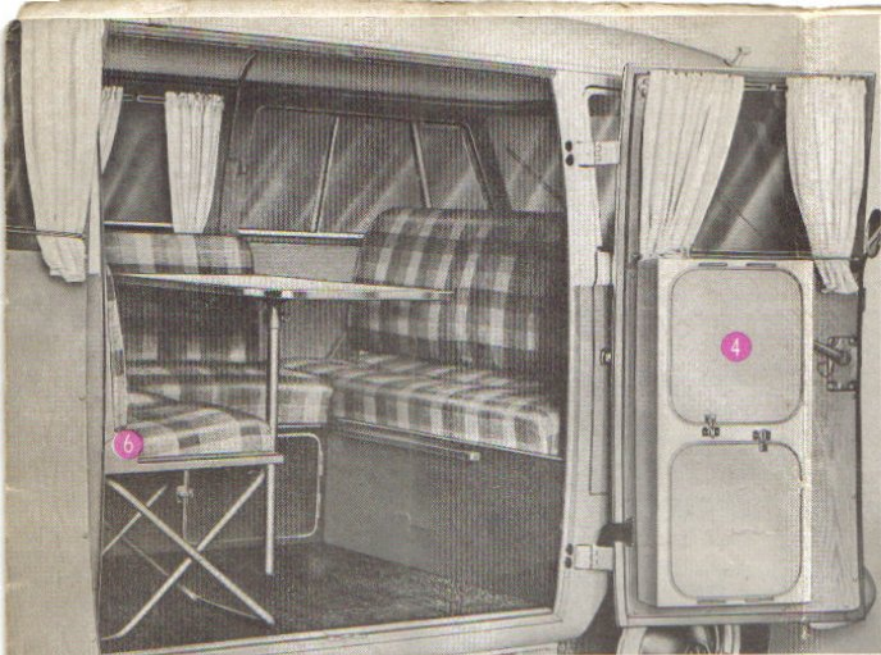


-Camper

1961/62 EDITION

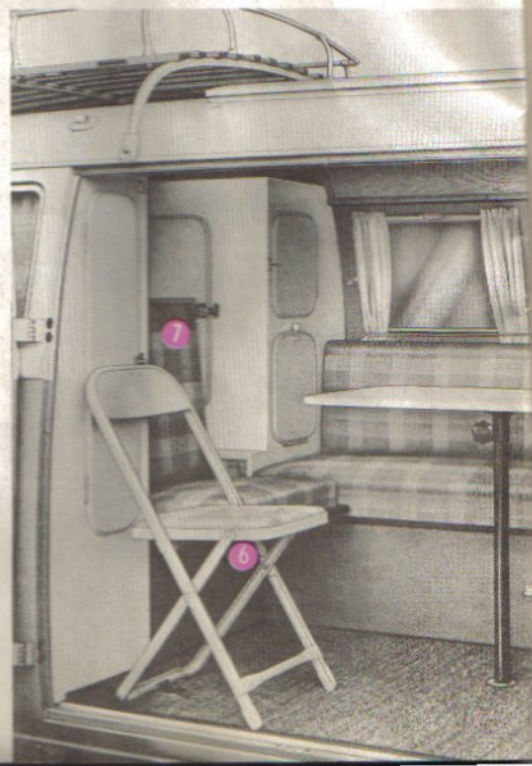
You are now the proud owner of a VW Camper - allow us to congratulate you on your choice. We have planned and built the equipment with the greatest care to match the world-renowned quality of the Volkswagen. This booklet contains a few tips and suggestions which will enable you to get the maximum pleasure from your Camper.

Good Camping!
WESTFALIA-WERKE KG

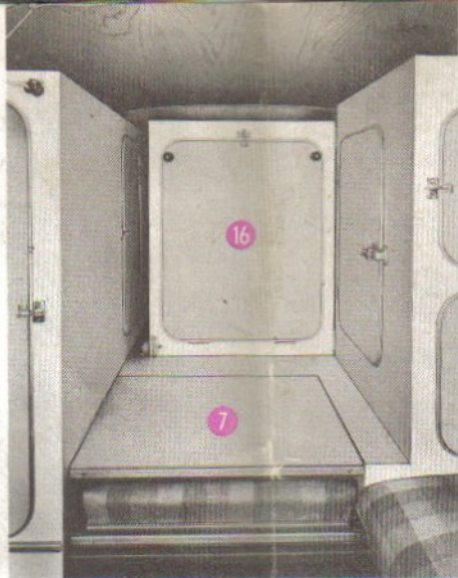


Here is the sliding seat (7) between the cupboards. It can be pulled forward and adjusted to two positions by pressing a catch.

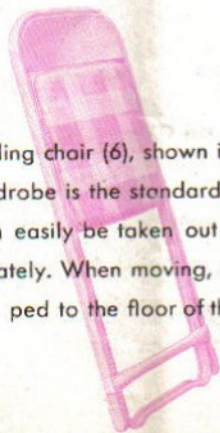
This picture shows how much room there is in the Camper: up to seven people can be seated round the revolving table for meals etc. and still have enough "elbow room". The driver's seat can be included in the living space by moving the backrest as explained on page 8. The seat shown in the above picture is not the standard type.



On the right the seat (7) is shown pushed in with the backrest lowered. The whole seat can be lifted after pulling a catch and the space below can then be used for stowing kit.



The folding chair (6), shown in front of the wardrobe is the standard type and can easily be taken out and used separately. When moving, it is clamped to the floor of the vehicle.

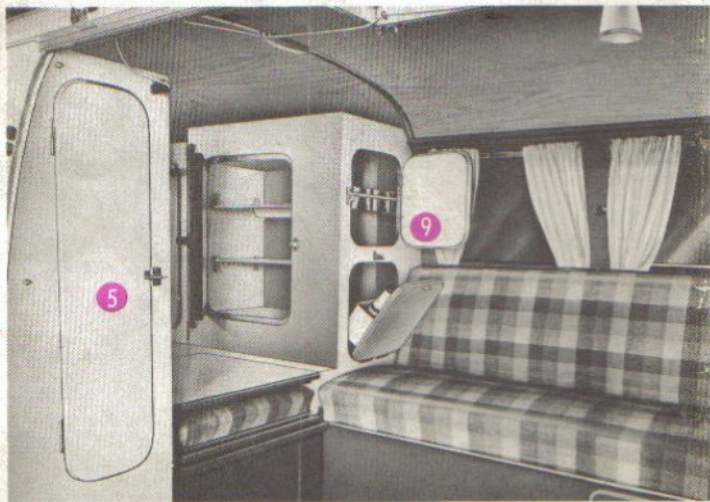


Here is the well insulated 2 cu. ft. ice box (8) for keeping foodstuffs and drinks fresh and cool. The tray in the upper shelf is suitable for holding wet or dry ice.



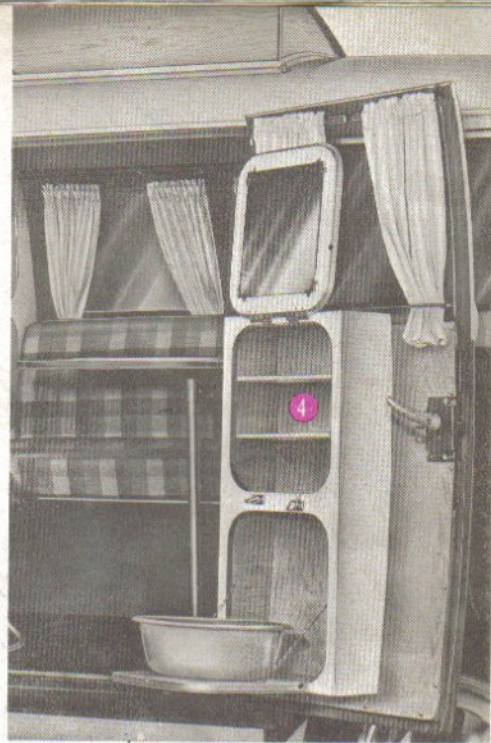
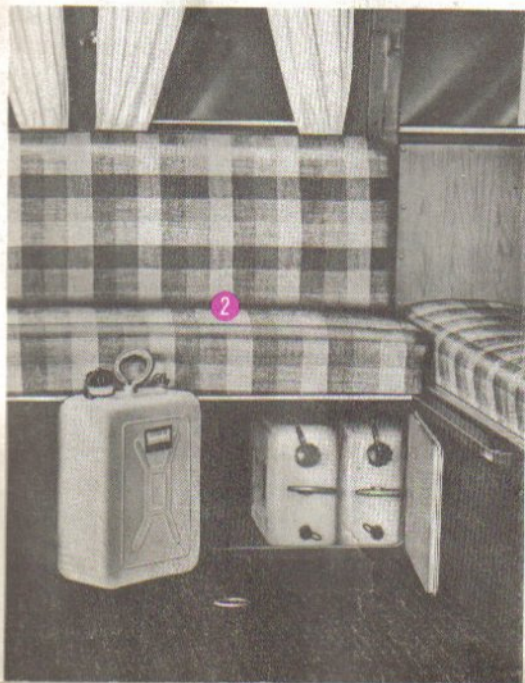
When you feel like having a drink, the bottles and glasses are ready to hand in the small "bar" (9) installed in the ice box

Six beakers are also provided.

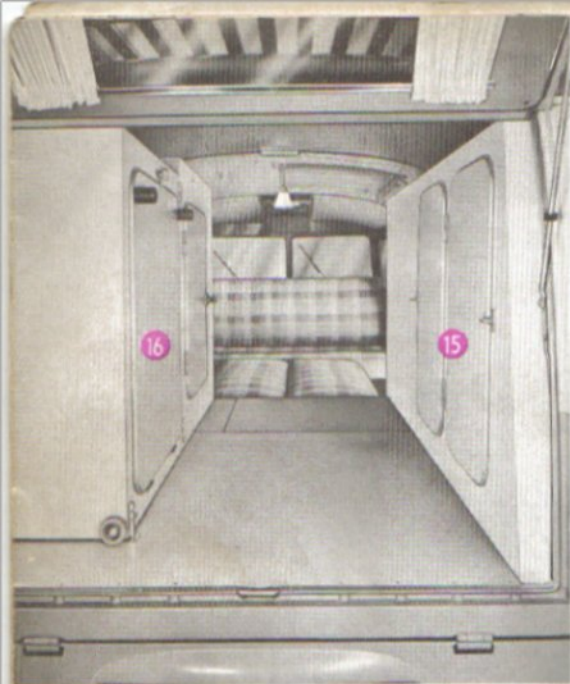


Your clothes remain crease-free and ready to wear in the wardrobe (5) near the wing doors. The hinged window ensures adequate ventilation and a curtain keeps out the sun. Your linen is stowed as shown on page 6 (2 cupboards 15).

Three 2-gallon water cans are provided just in case you are not near a source of supply. The cans are easy to carry and keep clean and have breather screws to facilitate pouring. One good tip: when the cans are not in use, leave them open so that they remain fresh and odorless. They are stowed under the bench seat.

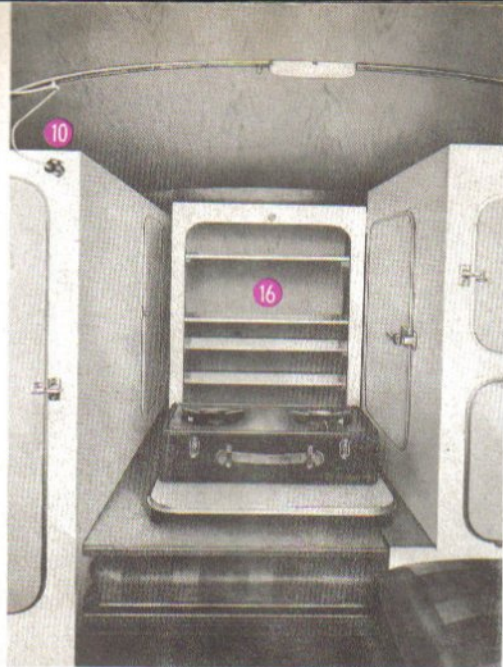


Most camping sites have washing facilities nowadays but if you do not wish to use them you always have the built-in cupboard (4) on your Camper. The lower part contains a washbowl and the upper part the toilet articles.



Should you wish to do your own cooking - everything is there. When the weather is good you can even cook outside. Just lift the rear flap, lower the lid of the kitchen cabinet (16) and place the petrol cooker on it. If you intend to obtain a cooker separately note that it must not be larger than 52 x 13 x 34 cm (20 x 6 x 13").





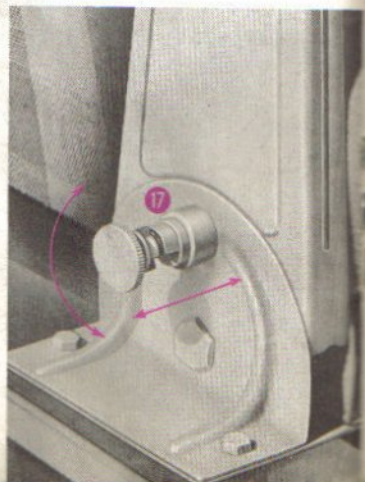
If you prefer to cook inside, swing the kitchen cabinet (16) round - also shown in the center picture on page 9 - and secure it in position. Now push the sliding seat (7) fully home, fold the backrest down, open the lid of the kitchen cabinet, place the petrol cooker on it and you are ready for action.

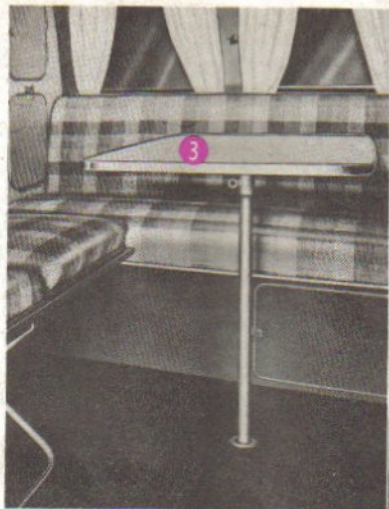


**Driver's seat with
swinging backrest.**



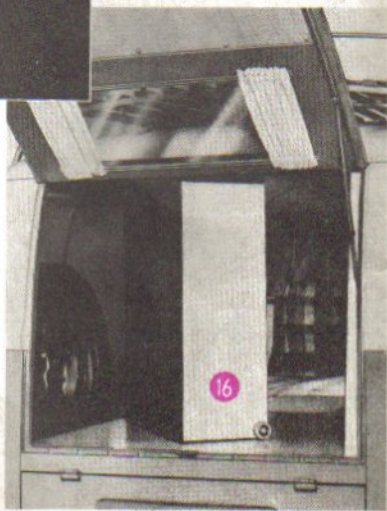
Here you see how the driver's seat is included in the living space. On the left, the seat is in the driving position. In the center it is being used as a child's bed together with the hammock and on the right the bench seat is part of the living space. The arms can be fixed in the three positions by means of spring loaded plungers (17). The plungers can be locked out by turning them to the right. This is handy when one person is moving the backrest.



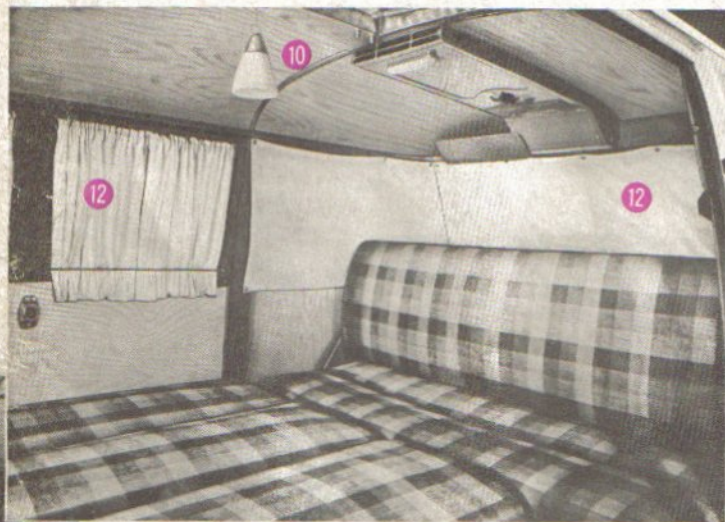


The table (3) has a tubular leg which fits into a socket in the vehicle floor. The table turns at the top and in the socket and the top can be taken off completely.

The table can also be used away from the vehicle by inserting the tubular leg in a socket mounted in the spare wheel. The wheel then forms a solid base for the table.

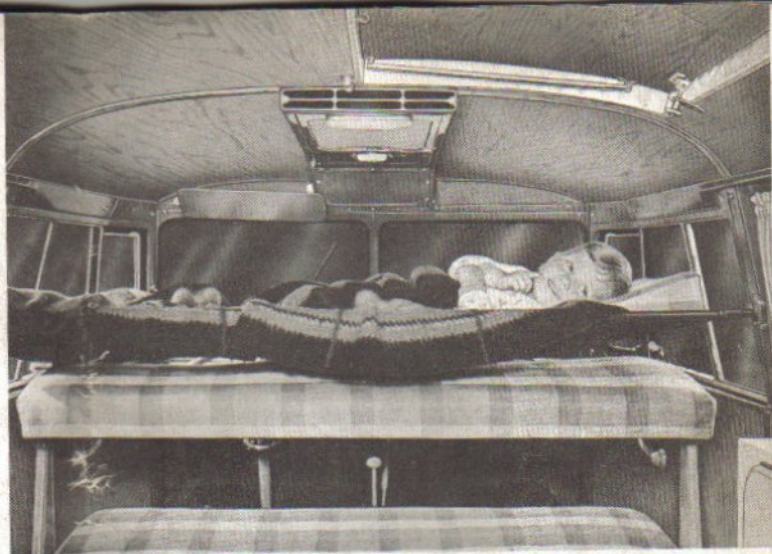


The living room can be turned into a bedroom quickly and effortlessly. The sequence is as follows: take table out, remove leg and stow top and leg on the wardrobe and ice box (see left-hand picture on page 12). This forms an additional shelf overnight. Then take the bench seat backrest off. This is secured in rubber mountings and can easily be removed with a slight jerk (and replaced in the same way). Finally, take the



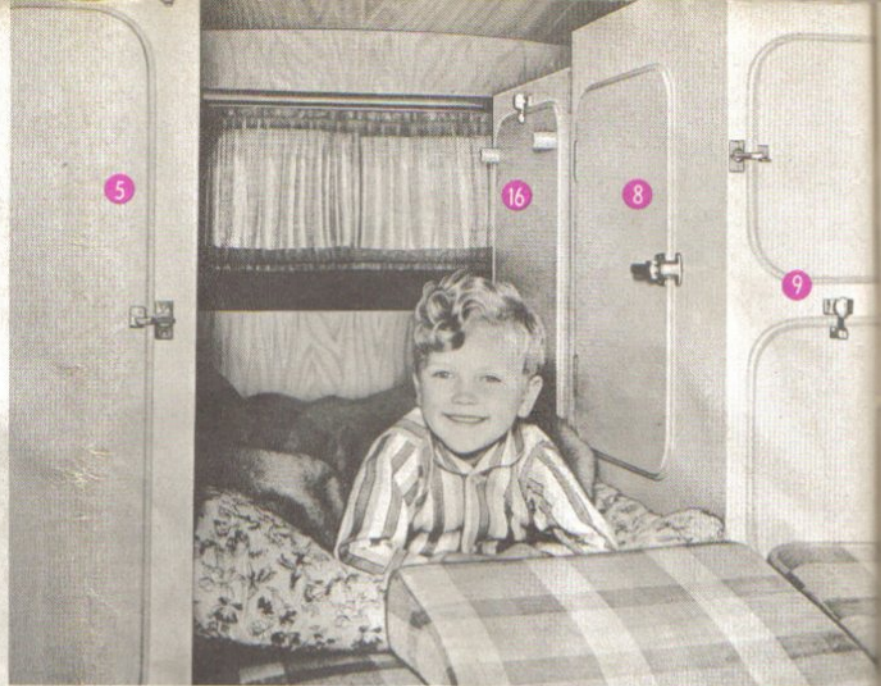
cushion out of the stowage space now exposed and place all three cushions on the supports provided. If this surface is long enough, you need not swing the driver's backrest forward but otherwise this must be done (see pictures on page 11). Very tall persons can also use the sliding seat surface (7). Curtains are fitted on all windows and we supply special button-on curtains (12) for the driver's cab.

Child's bed in
front of vehicle.



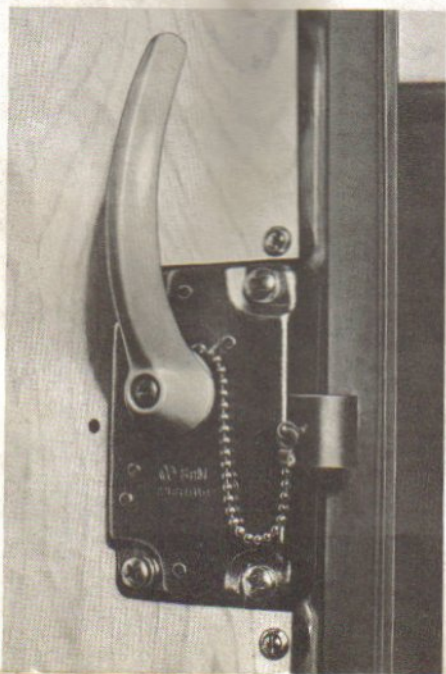
This is rigged up by hooking the tubes of the canvas hammock, which is normally stowed in a bag above the wardrobe, into the brackets on the window and door pillars. It is best to fit the longer rear tube first.

Child's bed in
rear of vehicle.



You can make up a bed for a second child between the cupboards at the rear. Swing the kitchen cabinet back and fold the backrest of the sliding seat (7) down. An air mattress or eiderdown can be used as bedding. The Camper can thus accommodate two adults and two children comfortably.

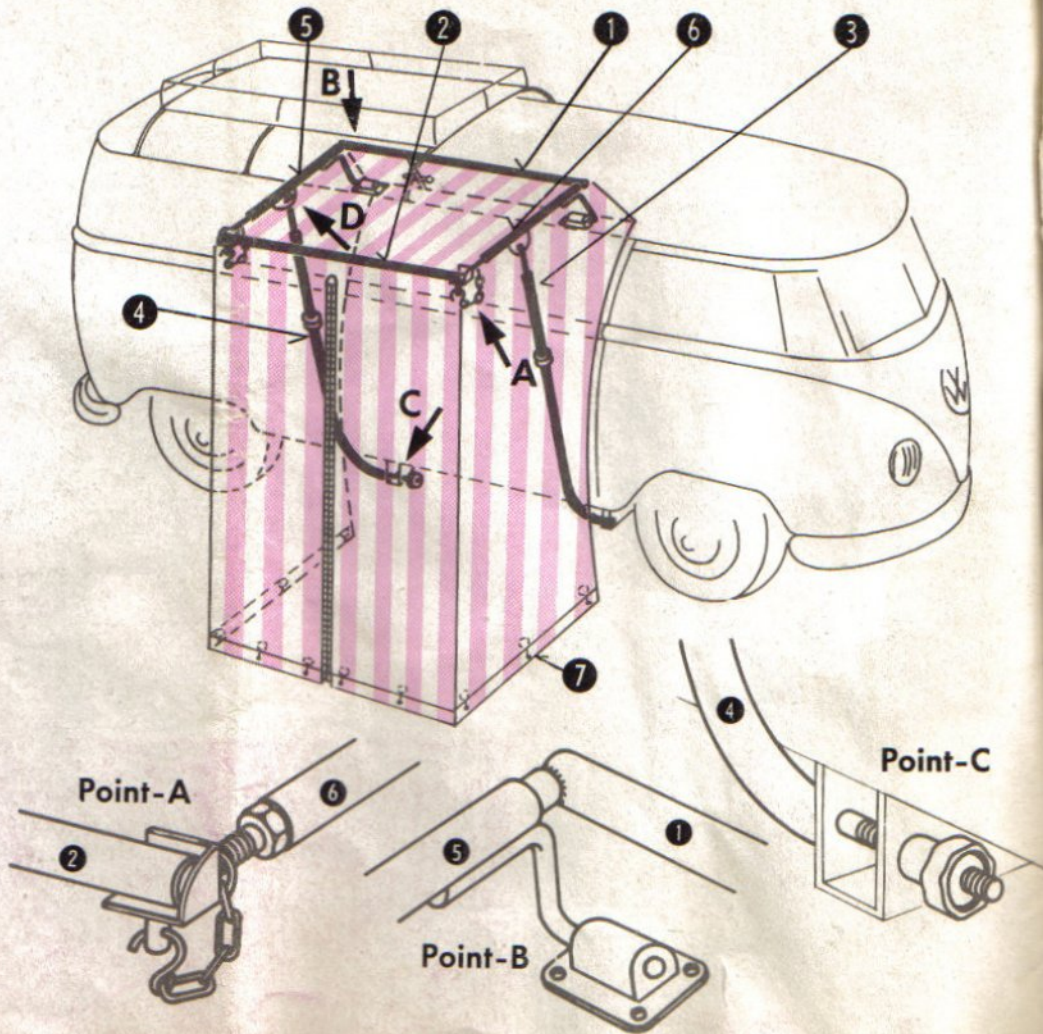
You can also lock
the Camper from inside.

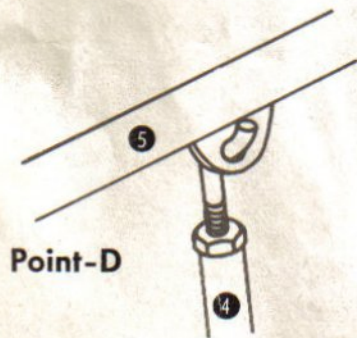
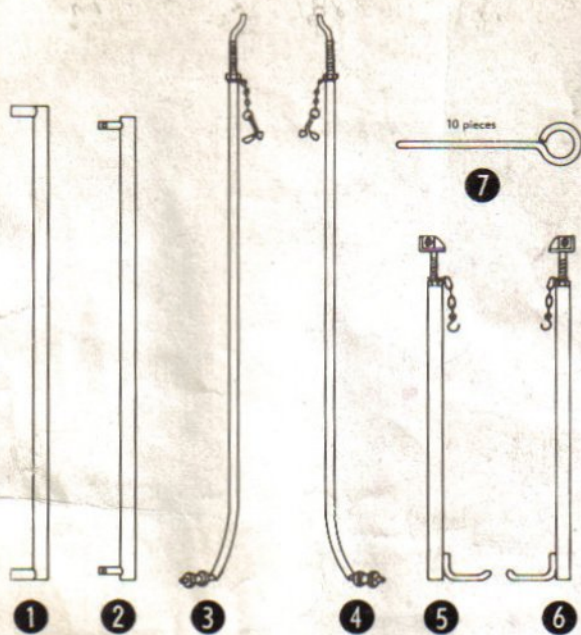


There are two different tents available for the Camper. The small side tent as shown above offers additional space for dressing. The large tent (optional extra) covers almost the entire length of the vehicle and provides considerable extra living space. It has a separate compartment at the rear which can be used to accommodate the toilet or as storage space. The instructions for erecting these tents are given on the following pages.



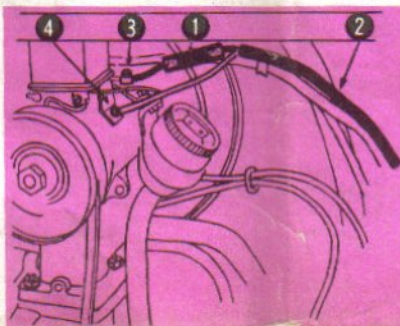
The chemical toilet which is supplied as an optional extra can be stowed under the sliding seat (7) when on the move. It is advisable to use the proper chemicals in the toilet. A provisional mixture can be prepared from 80% water and 20% carbolic acid or Lysol. Half a pint of this concentrated solution is then diluted with four pints of water for use in the toilet.





Erecting the small side-tent.

- Hook the side tubes (5) and (6) inwards into the brackets on the vehicle roof (see point B) and connect the support tubes (3) and (4) inwards (see point D). Rest the support tubes on the ground for the time being.
- Push the connecting tube (1) into the rear seam in the tent roof and then slide the spigots on the tube (1) into the side tubes (5) and (6) (see point B).
- Push the front cross tube (2) into the front roof seam, insert spigots into the side tubes (5) and (6) and secure with the captive hooks (point A).
- Insert the support tubes (3) and (4) inwards into the jack brackets under the vehicle and secure with the knurled nuts (see point C). The height of the tent can be adjusted to suit ground conditions with the screws at the top of the support tubes (3) and (4).
- Fasten the front and side walls to the ground inside with tent pegs (7).
- Close the slit at the rear of the roof behind the roof rack support with Tenax fasteners.
- The small hooks and chains at the top of the support tubes (3) and (4) are for securing the wing doors.
- The rubber rings on the tubes (3) and (4) protect the doors against damage when open.



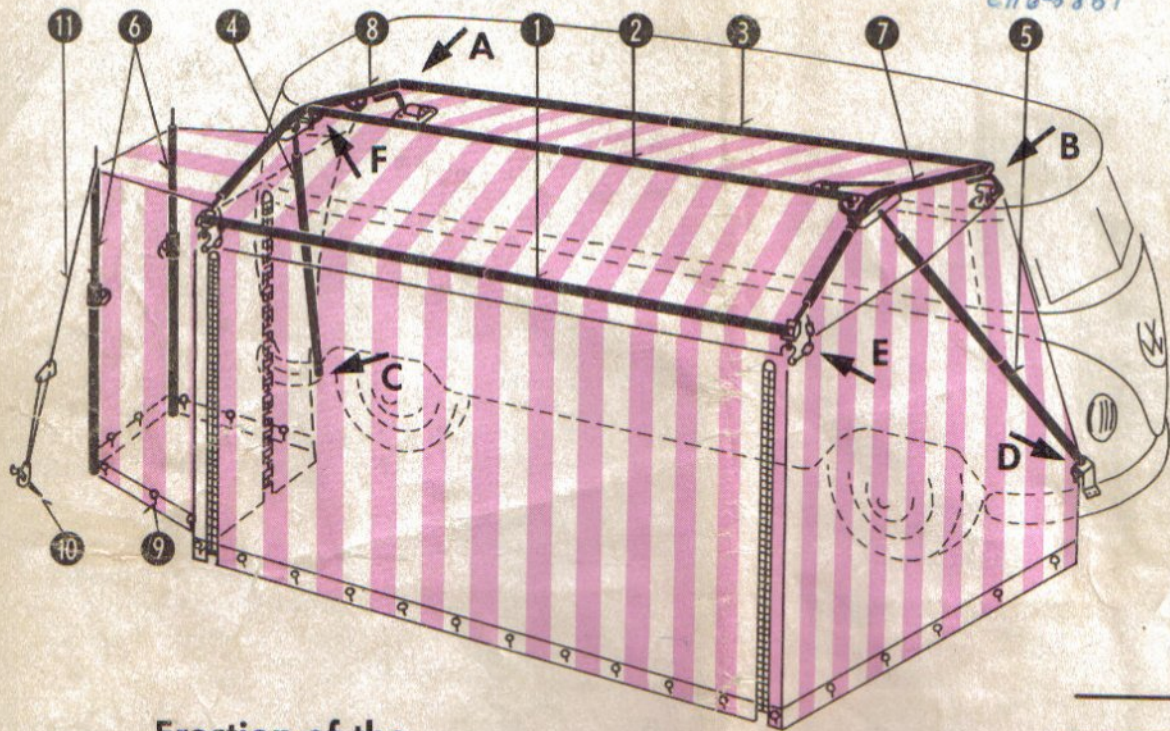
The fuse (1) for the interior lamp or the socket on the wardrobe is located in the end of the cable (2) in the engine compartment. The black cable (3) with fuse (1) is connected directly to the generator and the white cable (4) to the regulator bracket.

M1 63 111 Ext 224

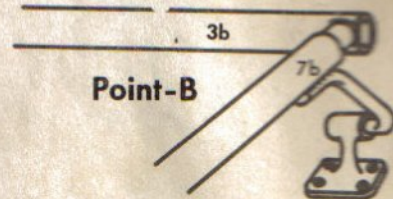
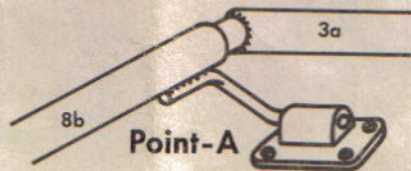
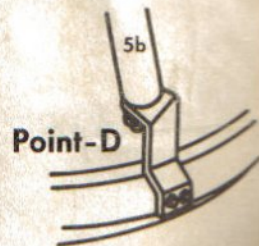
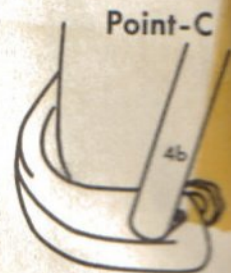
Don Wobbrock

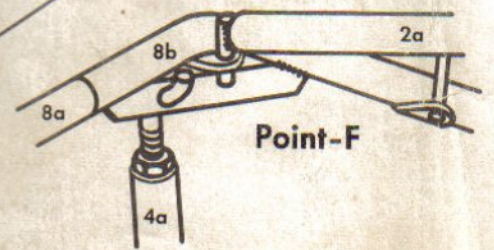
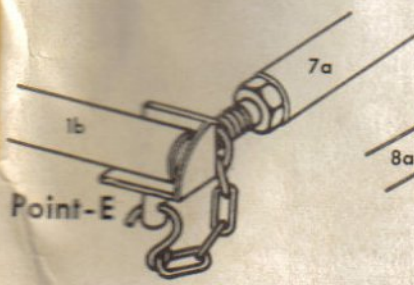
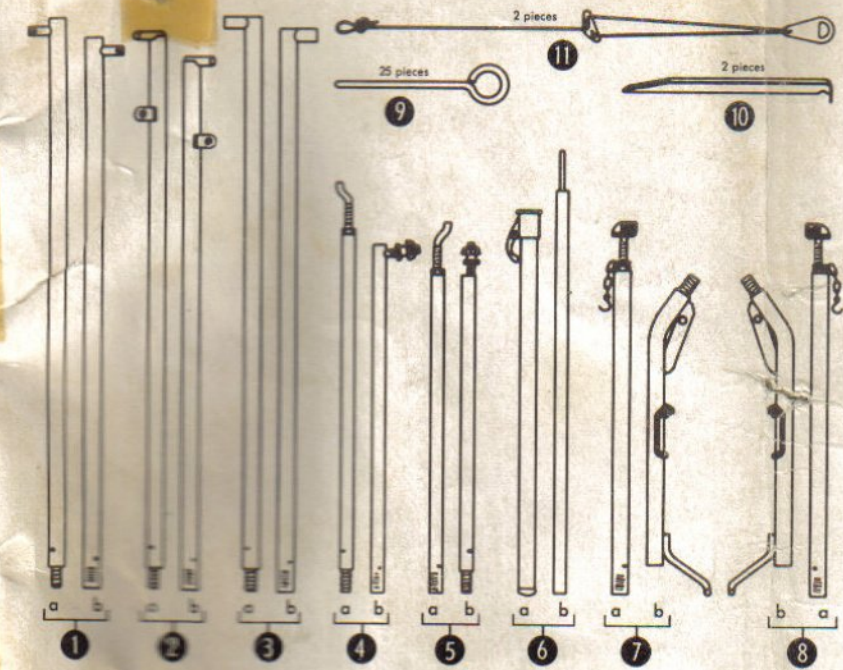
CA6-3881

Ext. 44



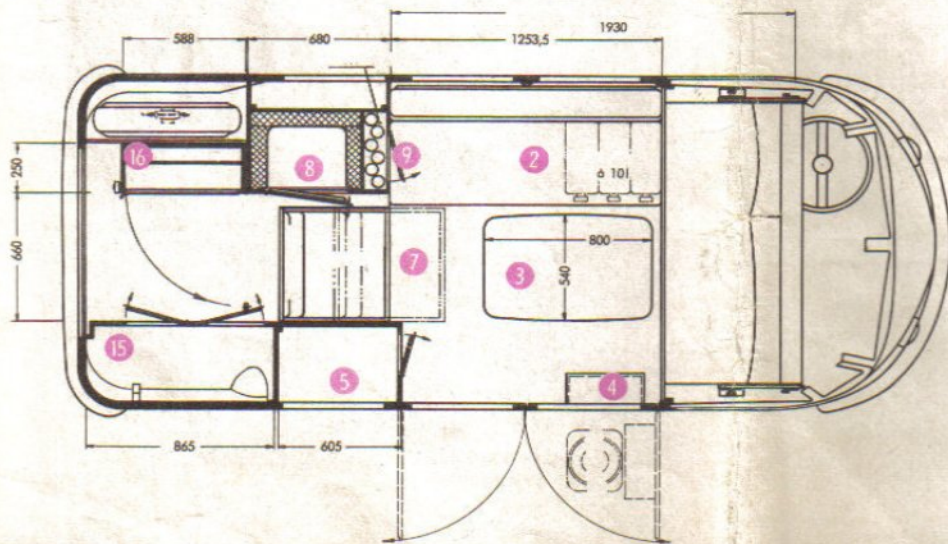
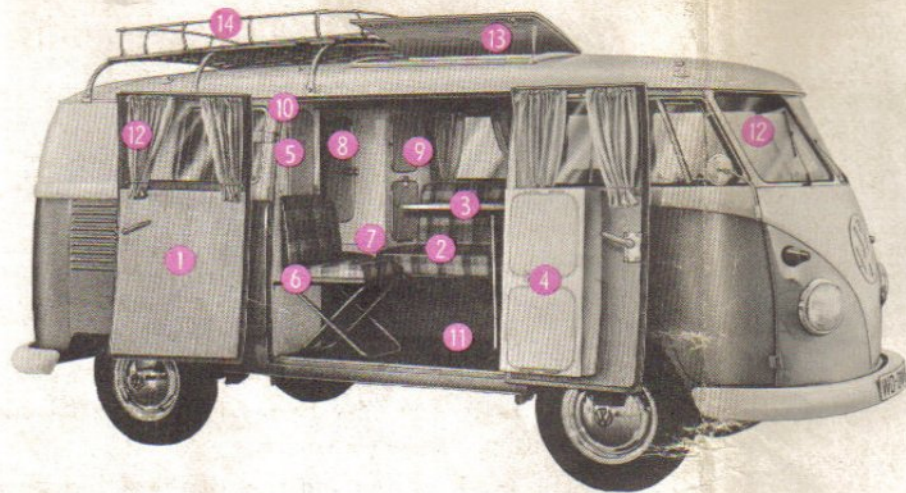
Erection of the
large tent.





- a) Hook the side tubes (7) and (8) inwards into the brackets (see point A and B) and connect the support tubes (4) and (5) inwards (see point F). Rest the support tubes on the ground for the time being.
- b) Attach the connecting tube (2) to the plates on the side tubes (7) and (8) (see point F) and secure with the hooks.
- c) Push the connecting tubes (1) and (3) into the roof seams and insert the tube (3) into the side tubes (7) and (8) (see points A and B).
- d) Insert the connecting tube (1) into the adaptors at the front of the side tubes (7a) and (8a) and secure with the hooks (see point E).
- e) Button the side and front walls to the roof (Tenax fasteners).
- f) Fasten the side and front walls to the ground with tent pegs (9).
- g) The tent can be opened and closed on each side by means of zipp fasteners.
- h) Erect the toilet room with the sliding poles (6) and tension with the guy ropes (11) and special pegs (10).

Before erecting the tent for the first time it is advisable to lay all the parts out as shown here.



Summary of the most important items.

- 1 Interior trim and furniture of plywood or Getalit.
- 2 Upholstered seat bench with backrest, intermediate cushion and two pillows.
- 3 Table (can be used out of vehicle with spare wheel as base).
- 4 Practical washing cabinet with wash-bowl, mirror and three shelves.
- 5 Wardrobe
- 6 Folding chair
- 7 Upholstered seat with folding backrest
- 8 2 cu. ft. ice box for wet or dry ice.
- 9 "Bar" with shelves for glasses and bottles. Six beakers supplied.
- 10 Movable interior lamp, plug socket on wardrobe for electric razor etc. (6 Volt) See page 15 for socket fuse.
- 11 Floor lined with plywood and covered with sisal carpeting.
- 12 Curtains on all windows; removable curtains for windshield and cab door windows.
- 13 Roof flap, can be fixed in three positions.
- 14 Roof rack, easily accessible from roof flap. Room for large cases, tent and boat.
- 15 Linen cupboard.
- 16 Hinged kitchen cabinet.



For VW Camper users who wish to travel with large families or more than two adults we recommend the Westfalia Caravan "Landstreicher 295-4". It is very light and easy to tow and accommodates four adults. The caravan can also be fitted with a side tent.



WESTFALIA-WERKE KG · WIEDENBRÜCK i/WESTF. TEL. 391

The manufacturer reserves the right to change specifications
and executions. — Printed in Western Germany.