

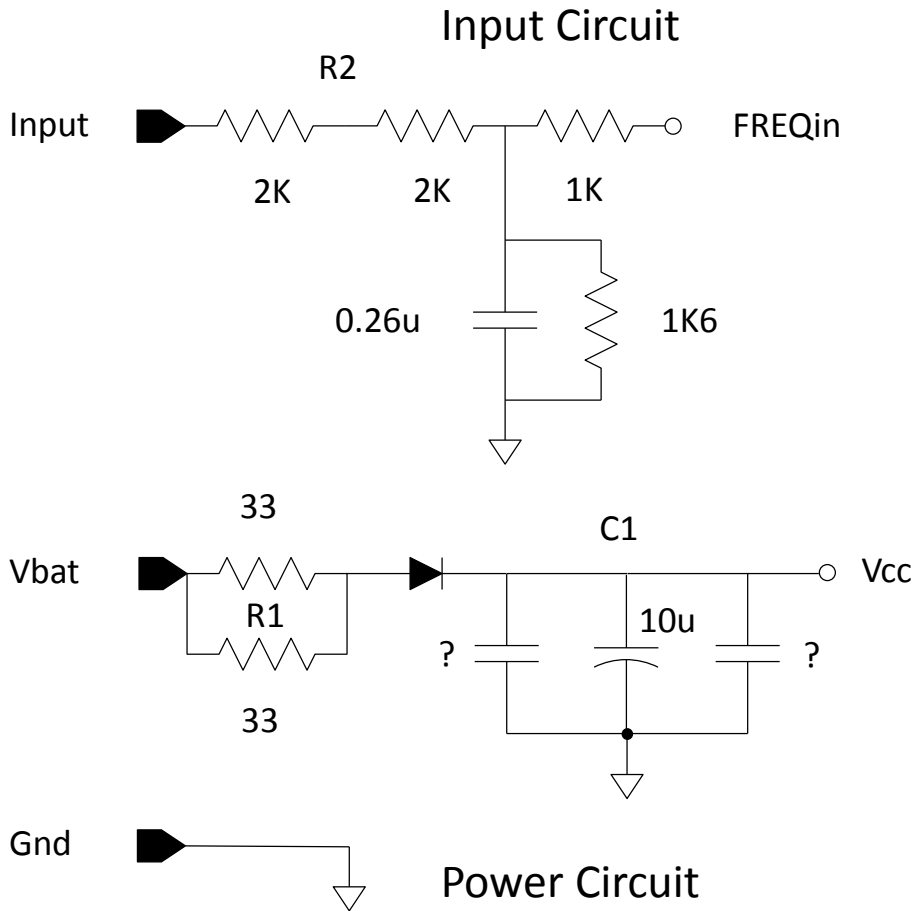
VDO 333051D Teardown

“The Good, the Bad and the Ugly

VDO 333051D Details

- The tach is based on an industry standard part
 - ON Semi CS8190 in a 20 pin SOIC package
 - Tach movement is an air core Sine/Cosine gauge
- CS8190 can be ordered from DigiKey
 - <http://www.digikey.com/product-detail/en/CS8190EDWFR20G/CS8190EDWFR20GOSCT-ND/2120588>
- Datasheet link:
 - http://www.onsemi.com/pub_link/Collateral/CS8190-D.PDF
- All circuit board components are surface mount
 - Surface mount parts CAN be soldered by hand

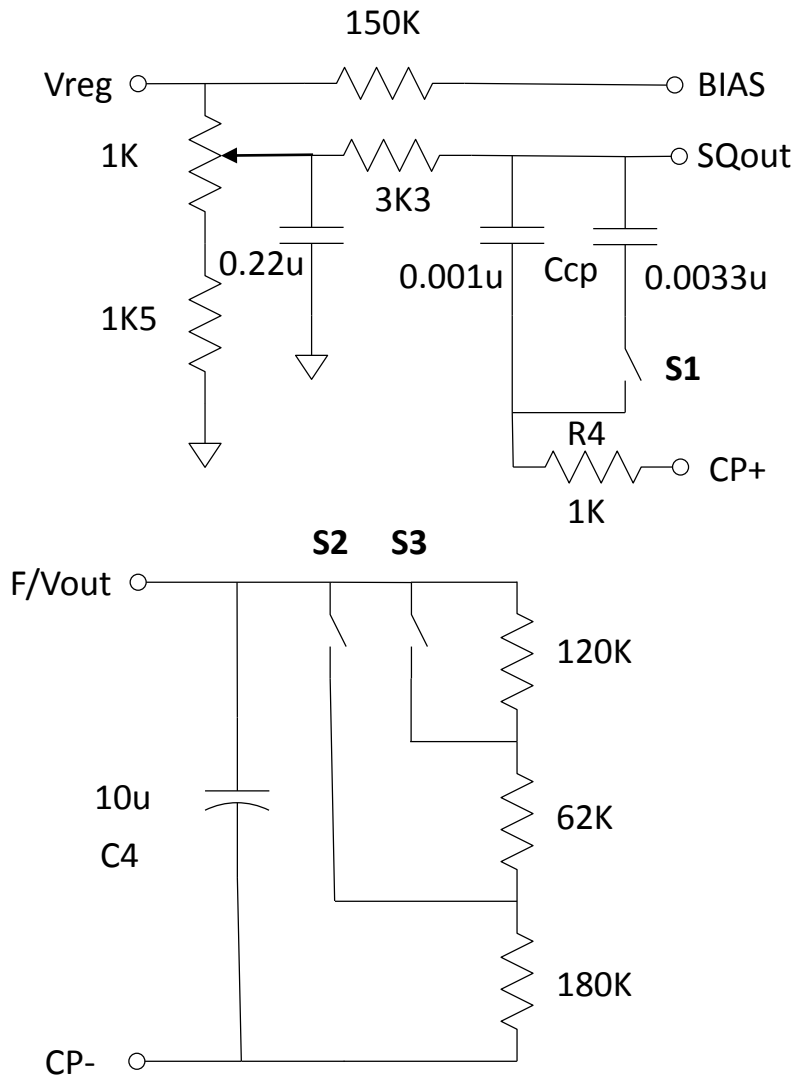
VDO 333051D Schematics (1)



- **Notes:**

- Input circuit inadequate for points ignitions
- Power circuit inadequate to protect from spikes
- Caps marked '?' are too small to measure in parallel to 10u

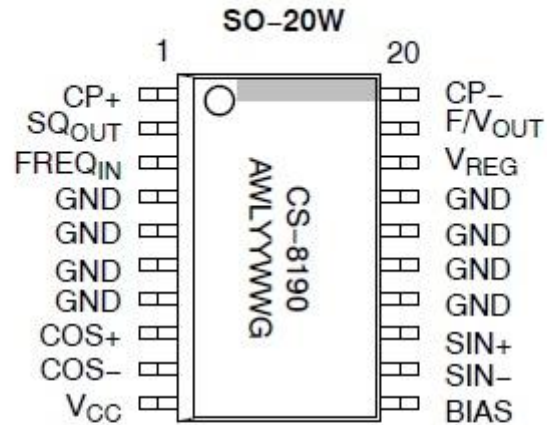
VDO 333051D Schematics (2)



- **Timing Circuit Notes:**

- VDO design differs from ON Semi reference design
- $C4$ can be changed to 4.7μ for better tach response

CS8190 Pinout



A = Assembly Location
WL = Wafer Lot
YY = Year
WW = Work Week
G = Pb-Free Package