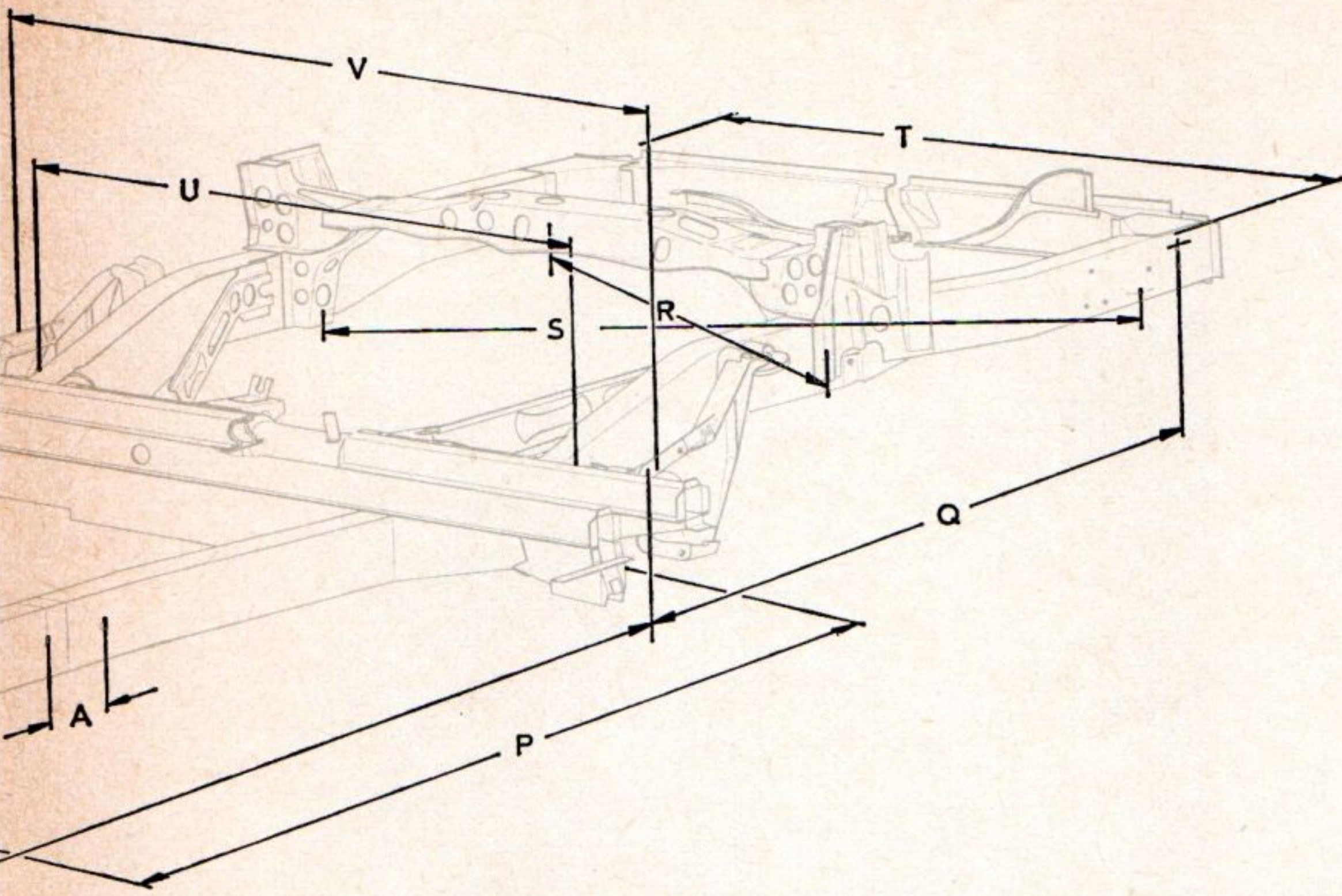


Frame dimensions — from August 1971 / from Chassis No. 212 2000 001

Dimension	Location	mm	Remarks	Figures
A	Distance between hole in rear side member and center pop in front side member (standard)	123	Measured from center of hole to center of center pop	
B	From cross tube flange (upper, front tapped hole) to lower rear tapped hole for the front axle in the side member	1998	Measured to center of hole	
C	Distance between the lower tapped holes for front axle in side member	205	Measured to center of hole	
D	From rear lower tapped hole for front axle to bumper attachment hole (front hole)	846	Measured to center of hole	
E/F	From the openings in the side members as shown in the illustrations to the bumper bar attachment hole (front hole)	1398	Measured diagonally	1, 2, 3
G	Distance between front inner side member and the steering gear support	567	Measured inside side member and outside steering gear support	
H	Distance between the two inner side members	532	Measured from the insides	
J/K	From the openings in the side members as shown in the illustrations to the tapped hole — M 6 — in the front cross member	1062	Measured diagonally	3, 4, 5
L/M	From the openings in the side members as shown in the illustrations to the outer edge of the weld flange outside side member	1528	Measured diagonally	6, 7, 8



Location	mm	Remarks	Figures
Distance between the outer edges of the outer side members	1208		8
Distance between side plates for front axle	746	Measured from the outside	
Distance from front outrigger to center outrigger	1276	Measured from the outside	
Distance from cross tube flange (front upper tapped hole) to bumper bar attachment hole (rear upper tapped hole)	1198	Measured from hole centers (not measured diagonally)	
Distance from the weld flange radius transmission carrier, to weld flange radius, side member	1101	Measured diagonally	
Distance between rear side members	1114	Measured from the outside	
Distance between side members (center of cross tube)	918	Measured from the outside	
Distance of cross tube flanges from one another	1170	Measured from the outside	

A18.2 Basic Dimensions Type 2

