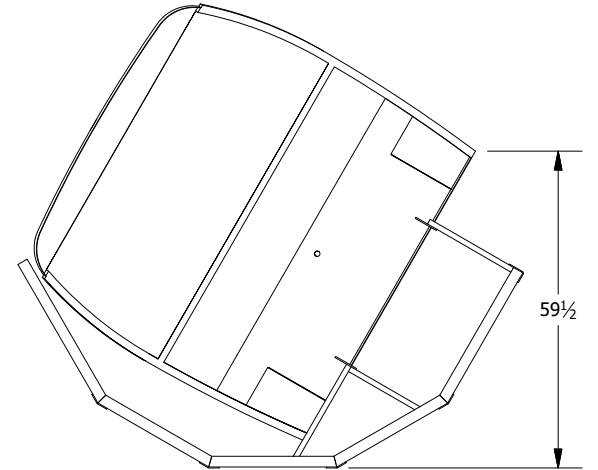
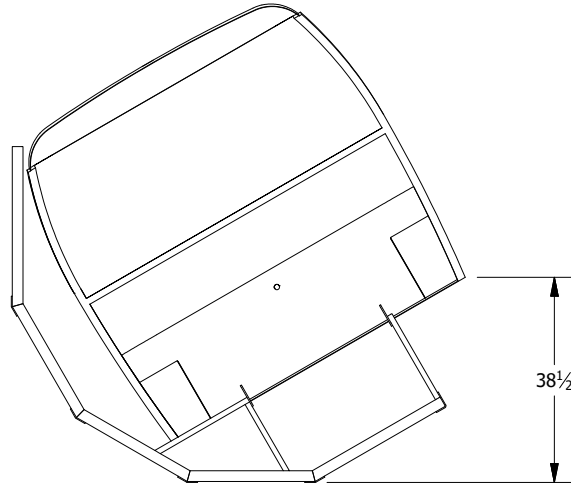
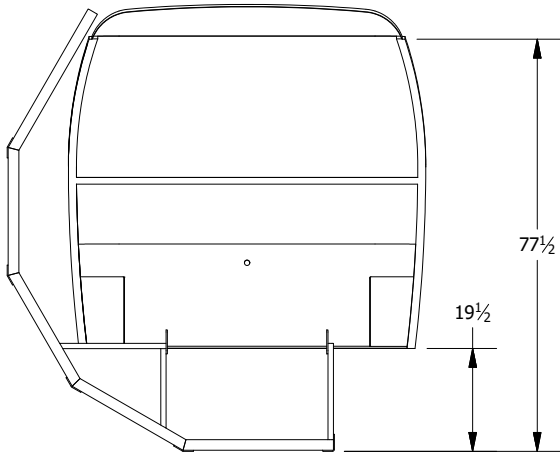


2



1

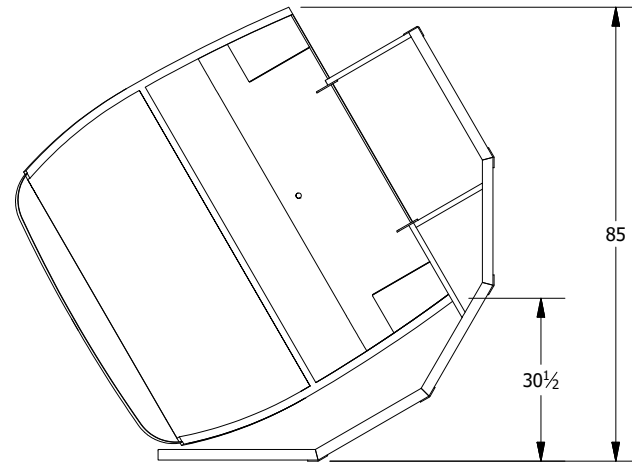
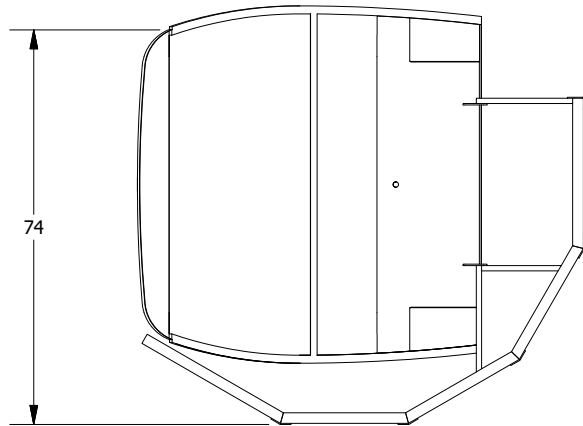
B



B



A



A

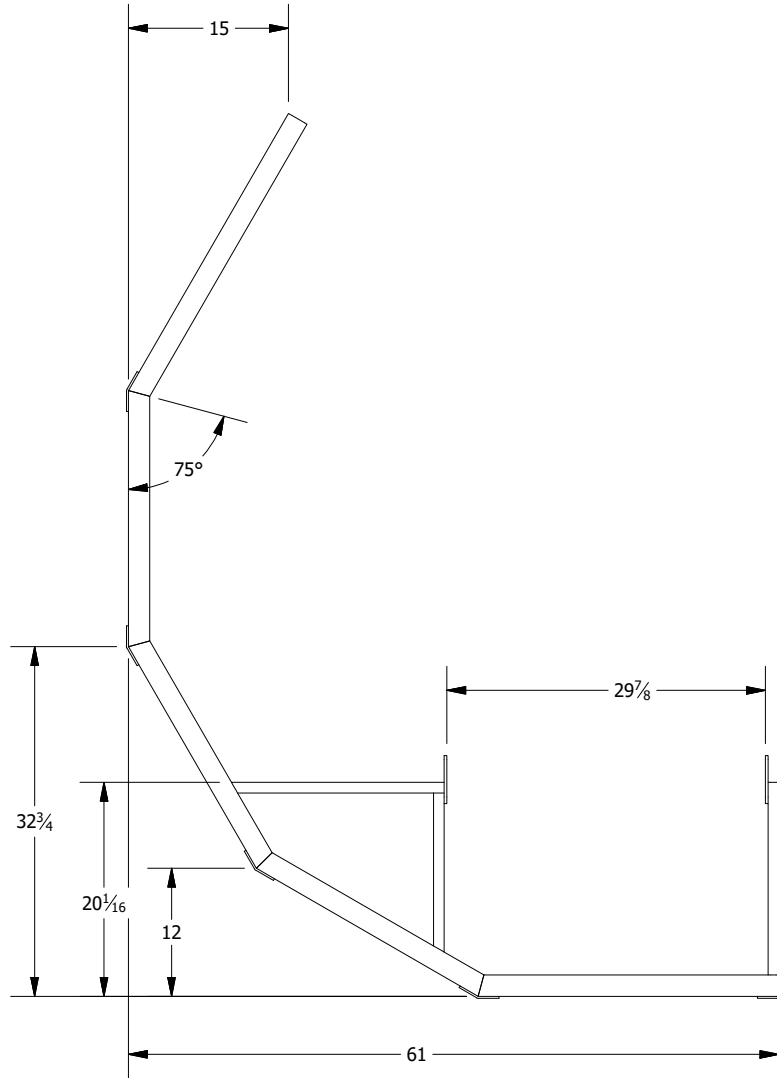
2



1

ITEM	QTY	MATERIAL	PART NUMBER
7	2	Steel, Mild	1/4" sheet
11	72.000 in	Steel, Mild	AISC HSS - 2 x 2 x 1/8 - 24
12	14.914 in	Steel, Mild	AISC HSS - 2 x 1 x 1/8 - 14.914
13	19.945 in	Steel, Mild	AISC HSS - 2 x 1 x 1/8 - 19.945
14	18.063 in	Steel, Mild	AISC HSS - 2 x 1 x 1/8 - 18.063
16	30.000 in	Steel, Mild	AISC HSS - 2 x 2 x 1/8 - 30
17	1	Steel, Mild	3/16" sheet
18	28.185 in	Steel, Mild	AISC HSS - 2 x 2 x 1/8 - 28.185
20	4	Steel, Mild	3/16" sheet

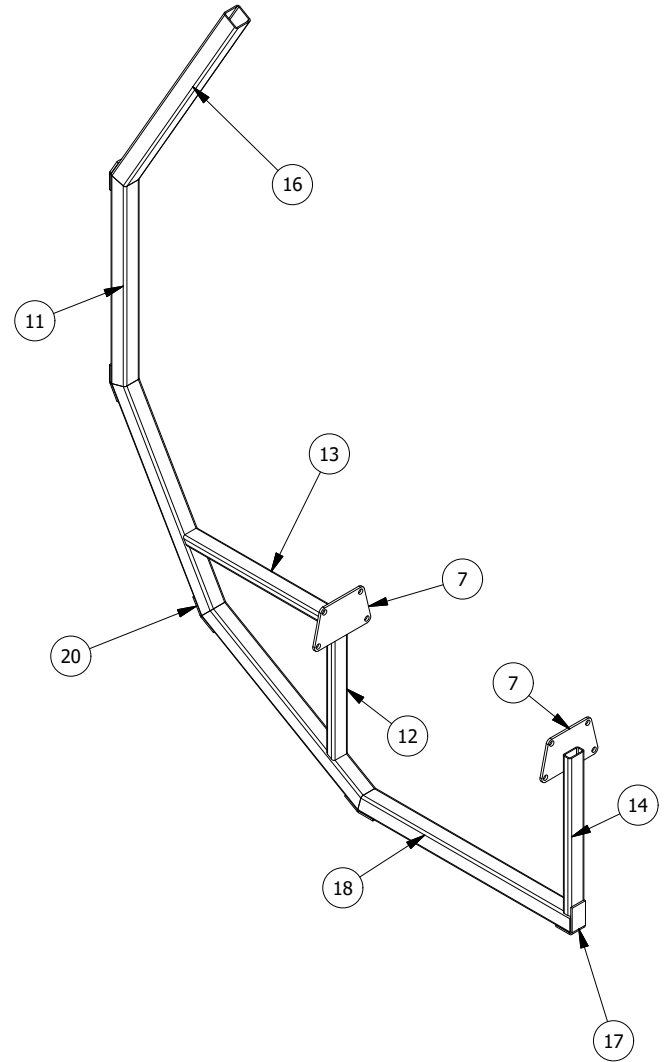
B



2

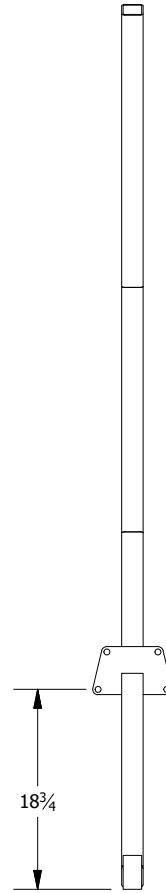


1



B

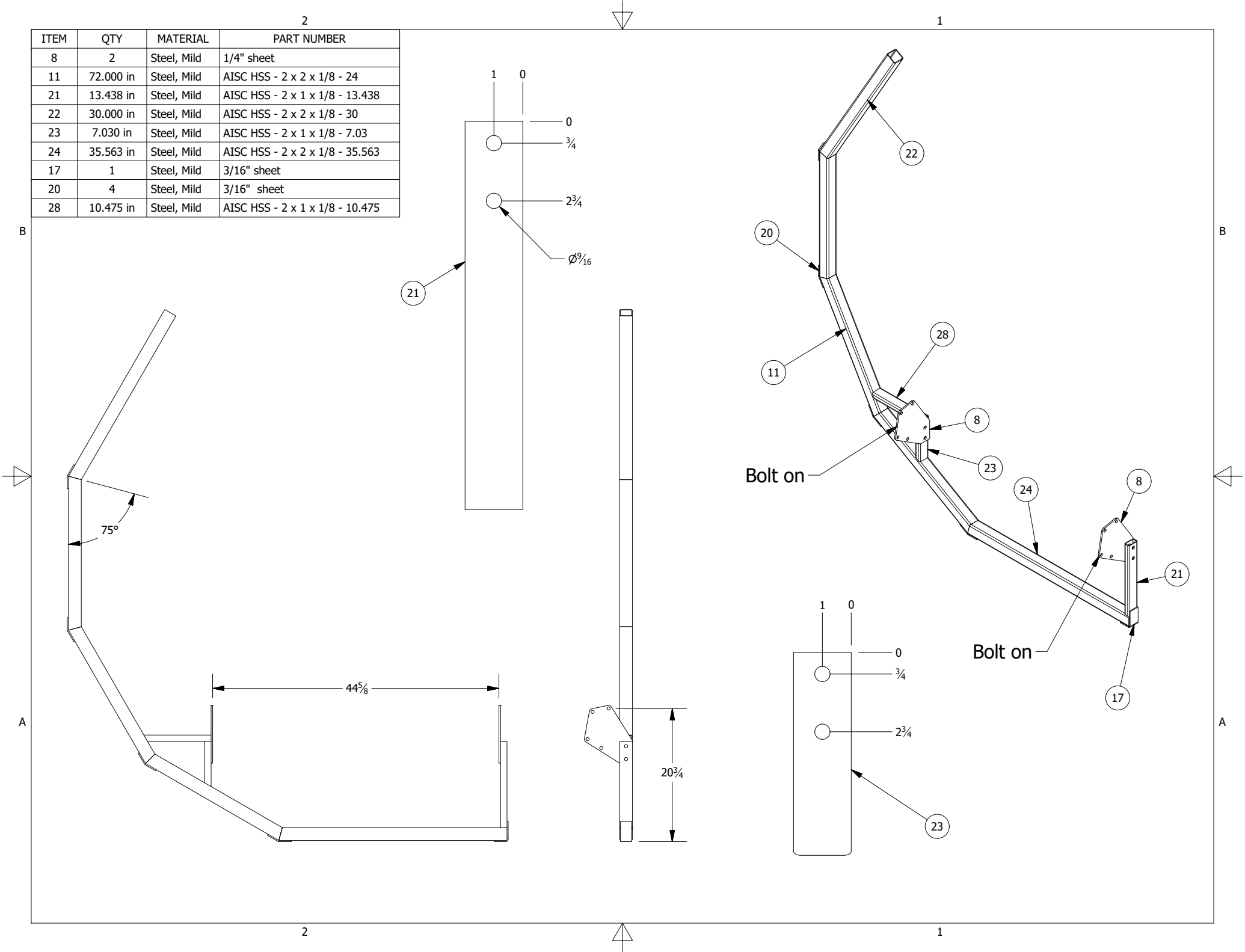
A



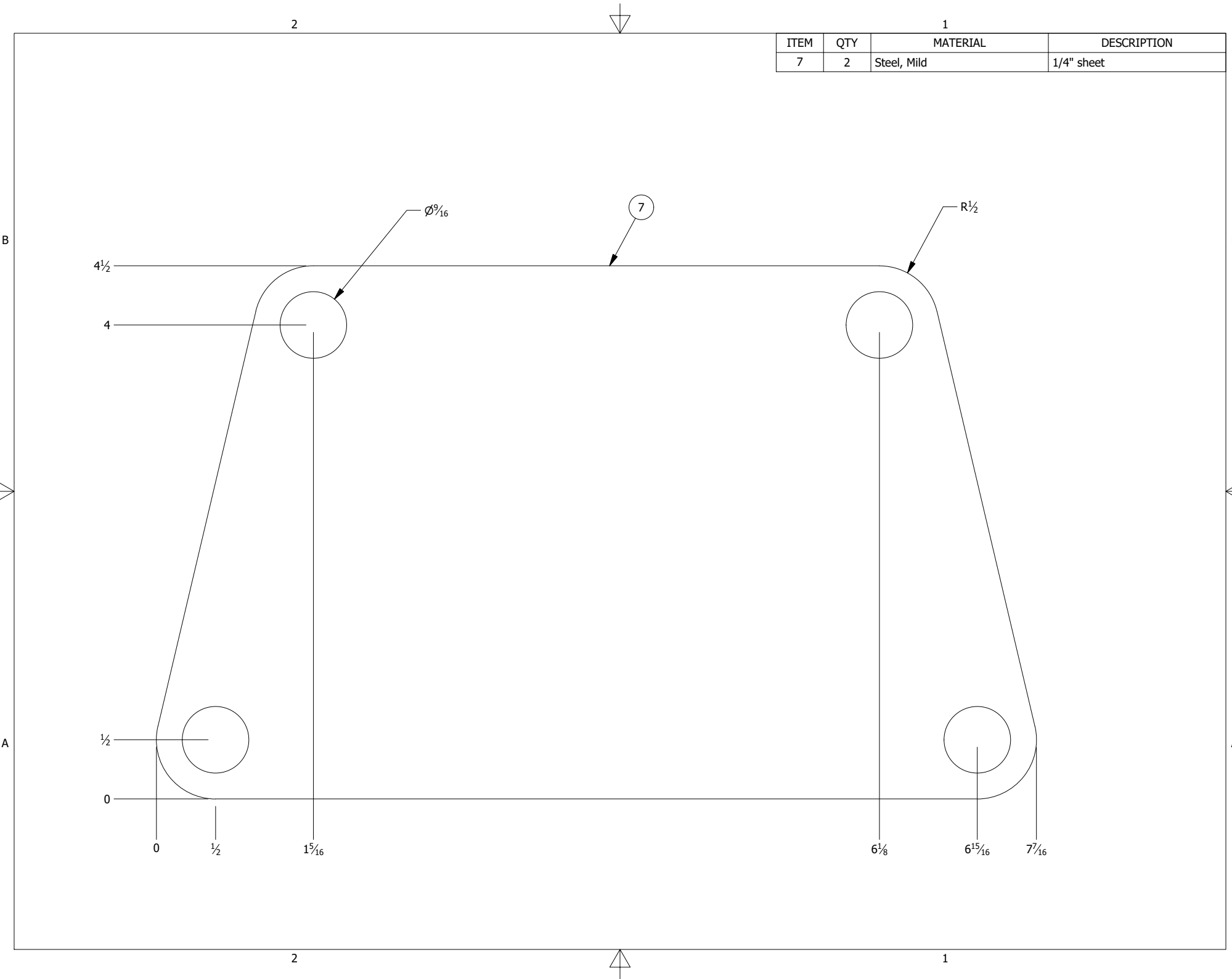
1

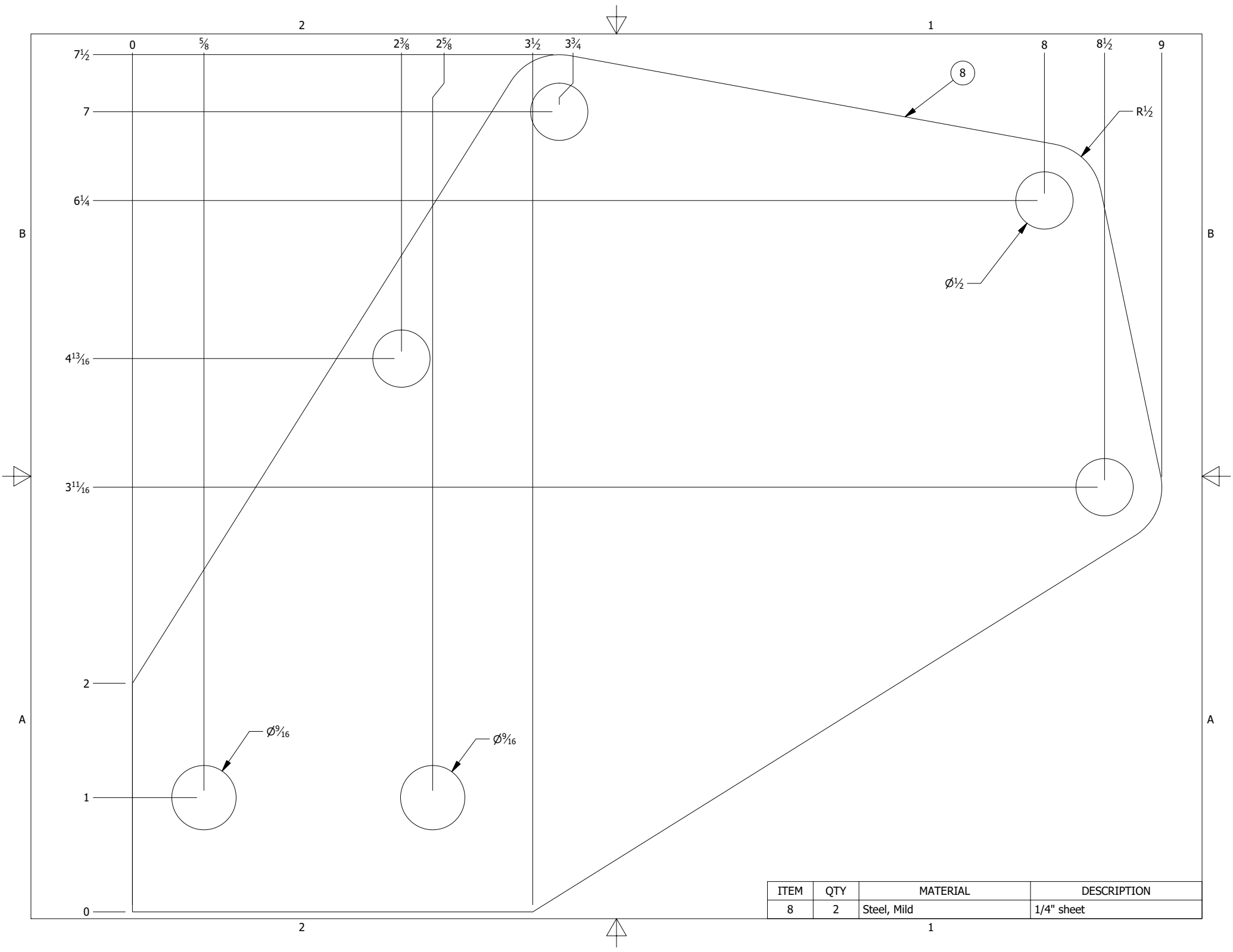
A

ITEM	QTY	MATERIAL	PART NUMBER
8	2	Steel, Mild	1/4" sheet
11	72.000 in	Steel, Mild	AISC HSS - 2 x 2 x 1/8 - 24
21	13.438 in	Steel, Mild	AISC HSS - 2 x 1 x 1/8 - 13.438
22	30.000 in	Steel, Mild	AISC HSS - 2 x 2 x 1/8 - 30
23	7.030 in	Steel, Mild	AISC HSS - 2 x 1 x 1/8 - 7.03
24	35.563 in	Steel, Mild	AISC HSS - 2 x 2 x 1/8 - 35.563
17	1	Steel, Mild	3/16" sheet
20	4	Steel, Mild	3/16" sheet
28	10.475 in	Steel, Mild	AISC HSS - 2 x 1 x 1/8 - 10.475



ITEM	QTY	MATERIAL	DESCRIPTION
7	2	Steel, Mild	1/4" sheet





ITEM	QTY	MATERIAL	DESCRIPTION
8	2	Steel, Mild	1/4" sheet

2

1

7 1/2

5/8

2 3/8

2 5/8

3 1/2

3 3/4

8

8 1/2

9

7

R 1/2

6 1/4

Ø 1/2

4 13/16

3 11/16

2

Ø 9/16

Ø 9/16

1

0

2

1

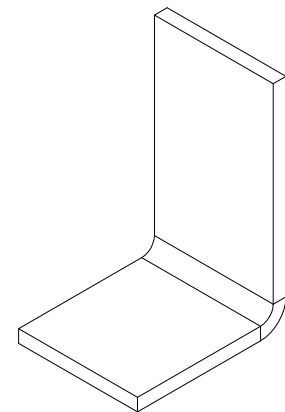
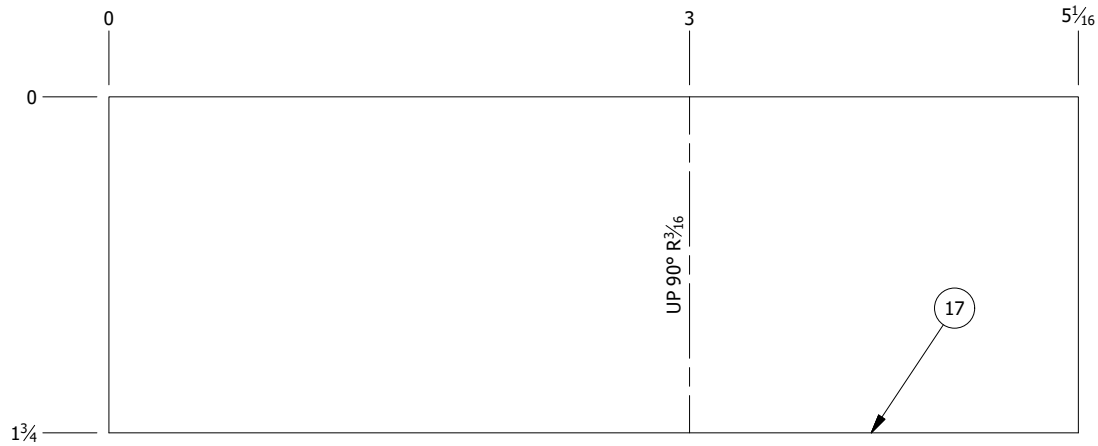
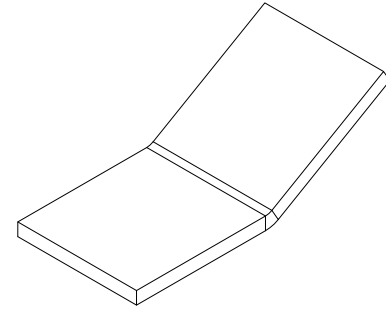
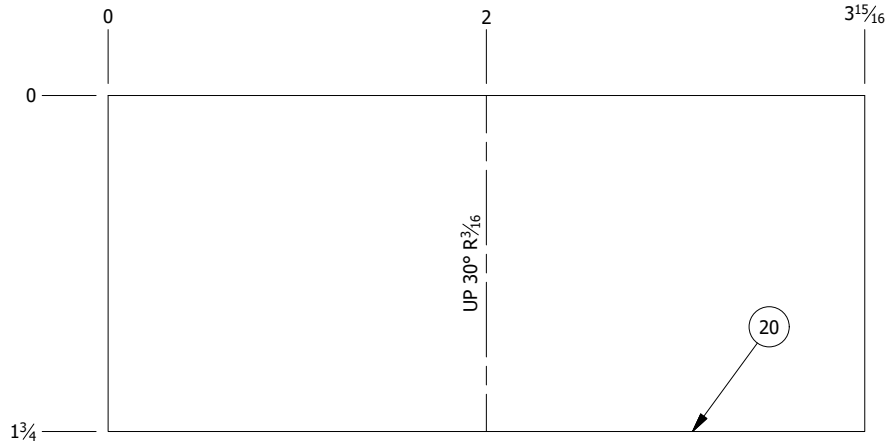
B

B

A

A

ITEM	QTY	MATERIAL	DESCRIPTION
20	8	Steel, Mild	3/16" sheet



ITEM	QTY	MATERIAL	DESCRIPTION
17	2	Steel, Mild	3/16" sheet