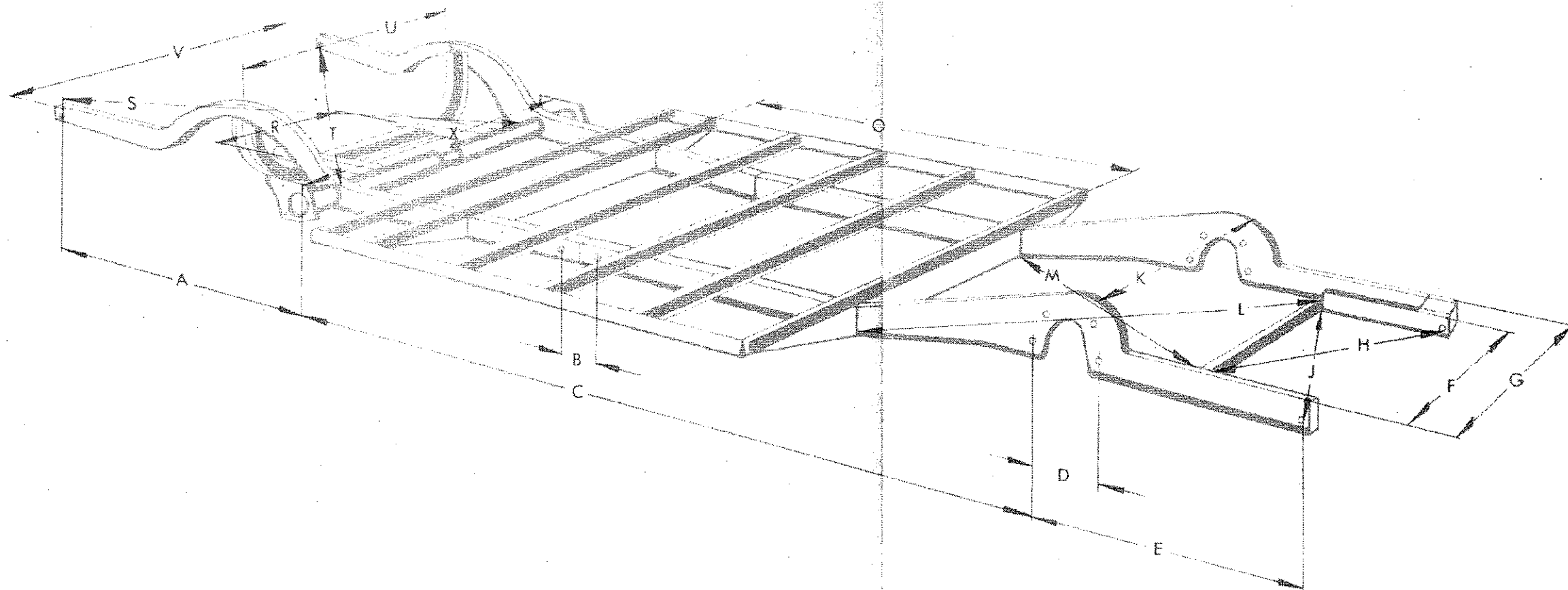
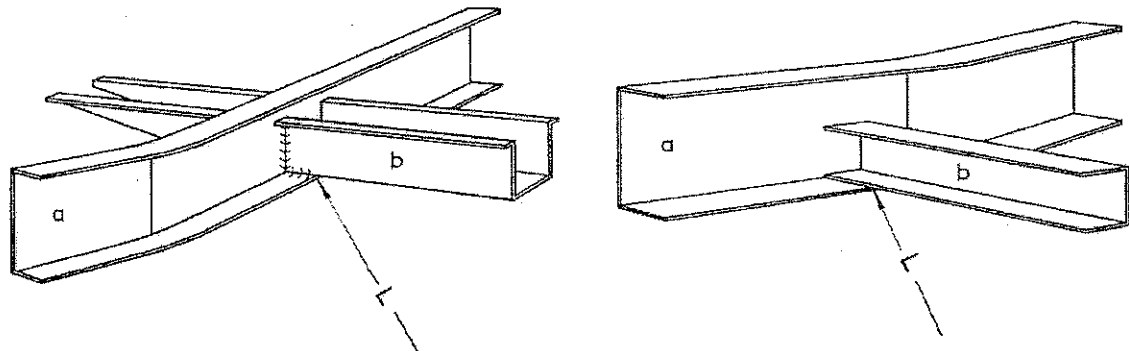
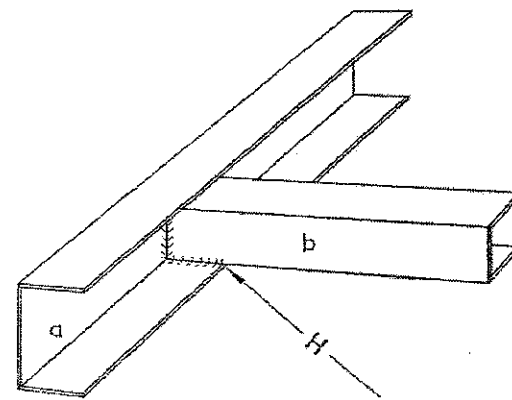
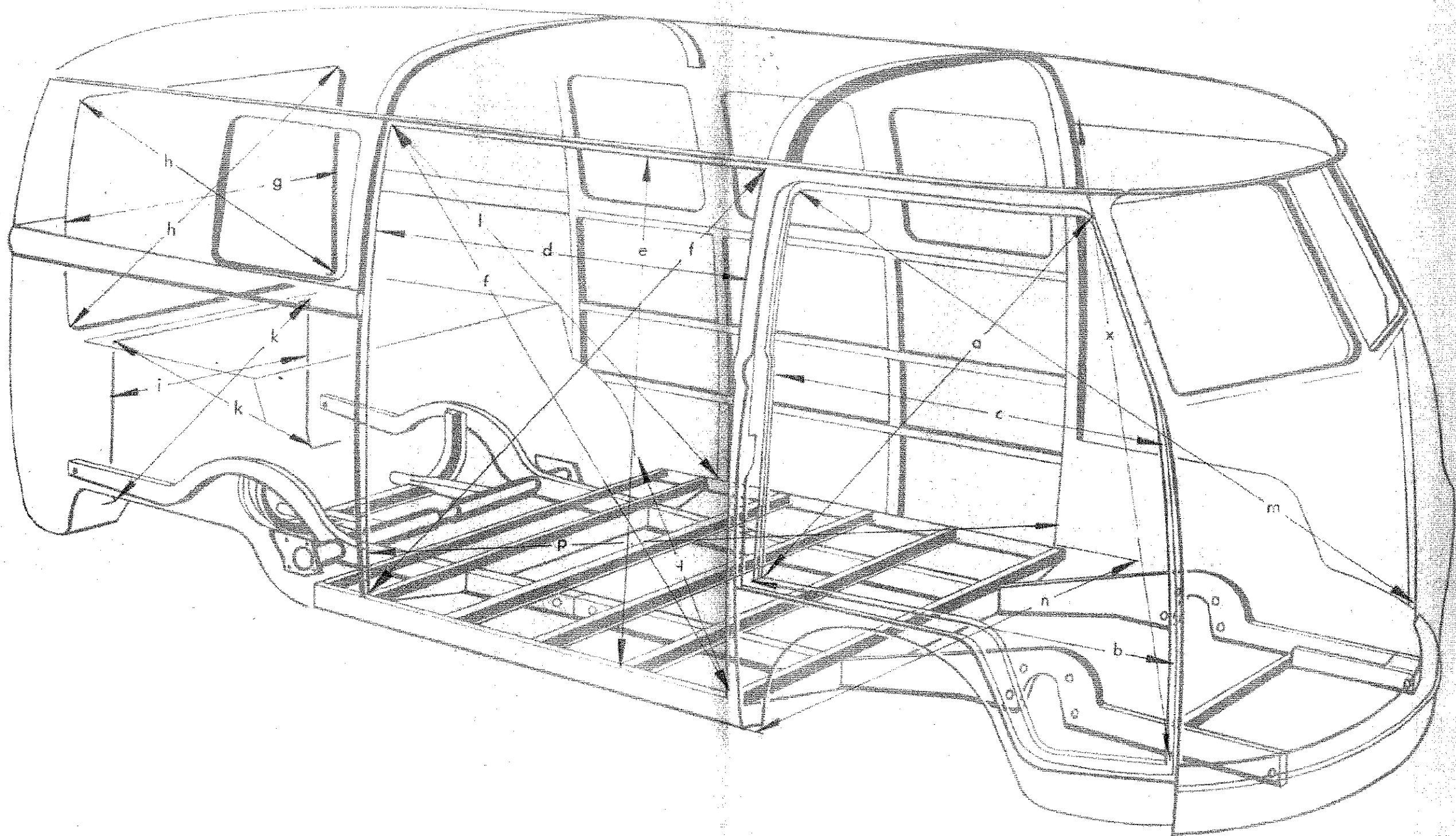


## Dimensions for Floor Plate Assembly Parts

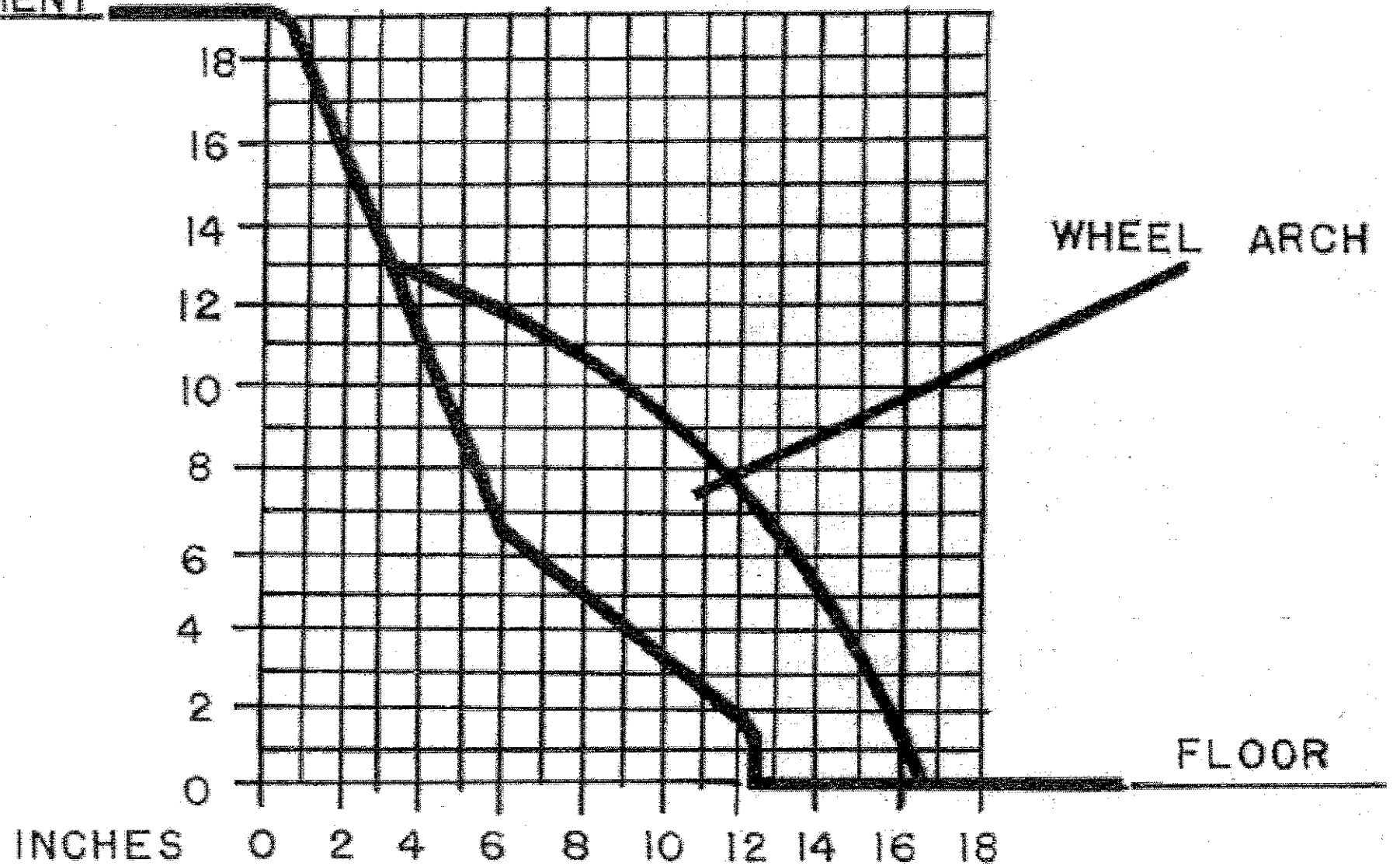


Dimension	Location	mm	Remarks	Dimension	Location	mm	Remarks
A	From hole for bumper attachment to cross tube flange (front, upper tapped hole)	1100	measured to center of hole.	K	Distance of front side members from each other, near the holes for securing front axle	746	measured from outside.
B	Distance between holes in front and rear side members	125	the first hole in each of the front and rear side members.	L/M	Corner of side member/front intermediate brace to corner of side member/front cross member a - right side member b - intermediate brace	1085	diagonal dimension.  a - left side member b - front cross member
C	From cross tube flange (upper, front tapped hole) to lower, rear tapped hole for front axle in side member	2052	measured to center of hole.				
D	Distance between lower tapped holes for front axle	164	measured to center of hole.				
E	From rear, lower tapped hole for front axle to bumper attachment hole	683	measured to center of hole.				
F	Distance between front side member and steering support	593	measured from outside of side member to inside of steering support.				
G	Distance of both front side members from each other	740	measured from outside.				
H	Corner of front side member/front cross member to steering support (front tapped hole)	630	diagonal dimension a - right side member b - front cross member.				
J	Corner of steering support/front cross member to front side member (front hole for bumper attachment)	632	diagonal dimension.	O	From front outrigger to center outrigger	1282	measured from outside.
				R	Distance between securing holes in rear transmission mounting	300	measured to center of tapped hole.
				S/T	Corner of cross tube/rear side member to tapped hole for bumper	1330	diagonal dimension taken at welding seam and center of hole.
				U	Support between rear side members	826	measured from inside.
				V	Distance between rear side members	1004	measured from outside.
				X	Distance of cross tube flanges from each other	1130	measured from outside.

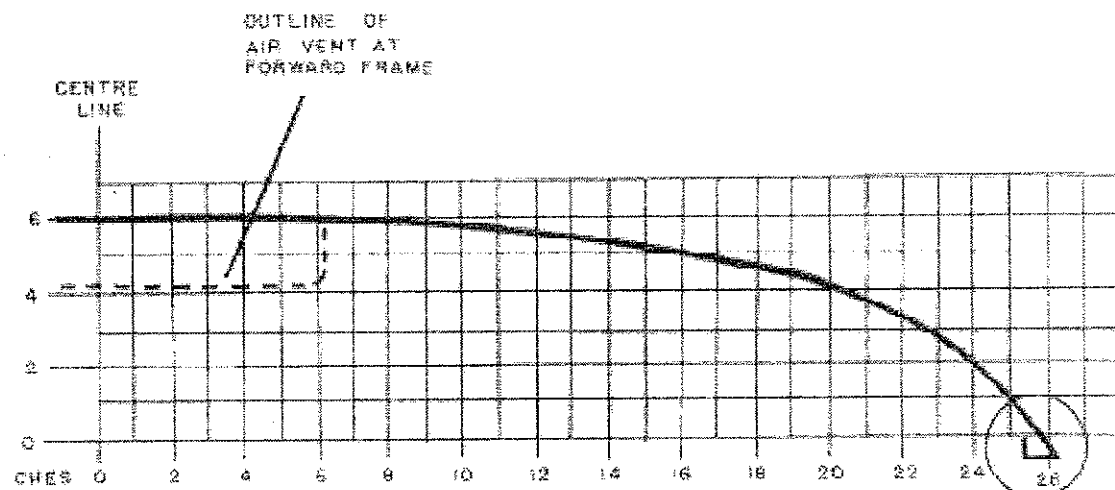


Dimension	Location	mm	Remarks	Dimension	Location	mm	Remarks
a	From corner of door frame lower part/lock pillar to radius of door stop/hinge pillar of cab door	1212	diagonal dimension, measured to weatherstrip seat.	h	From corner of roof frame protective strip/rear panel corner part to corner of cross member/rear panel corner part	1428	diagonal dimensions, measured to weatherstrip seat.
b	Width of body cutout for cab door	1072	horizontal dimension, measured on door frame lower part to weatherstrip seat.	i	Width of cutout for engine compartment flap	954	horizontal dimension, measured to weatherstrip seat.
c	Width of body cutout for cab door	974	horizontal dimension, measured 400 mm above door frame lower part to weather strip seat.	k	From corner of engine compartment lid carrier/rear panel corner part to corner of cross panel/rear panel corner part	1073	diagonal dimensions, measured to weatherstrip seat.
d	Width of load compartment door cutout	1210	horizontal dimension, measured to weatherstrip seat.	l	From corner of roof frame/rear, left strut to corner of rear, right strut/floor plate	2008	diagonal dimension.
e	Distance from roof frame to door sill in door cutout in load compartment	1255	measured to weatherstrip seat.	m	From corner of hinge pillar/door frame lower part (cab door cutout on left side of vehicle) to radius of lock pillar/door stop (cab door cutout, right vehicle side)	2008	diagonal, dimension, measured to weatherstrip seat.
f	From corner of roof frame/lock pillar-cab door to corner of side panel/door sill	1743	diagonal dimension (also for vehicles with sliding door), measured to weatherstrip seat.	n	Distance of side panels from each other	1510	measured at the spot weld flanges on the outside.
g	Width of cutout for rear flap	1218	horizontal dimension, measured to weatherstrip seat at upper holes for the adjustment plates.	p/q	Corner of wheel housing/side panel floor plate to corner of cross panel/lock pillar/floor plate	2167	diagonal dimension, measured on the welding seams.

TOP OF ENGINE  
COMPARTMENT

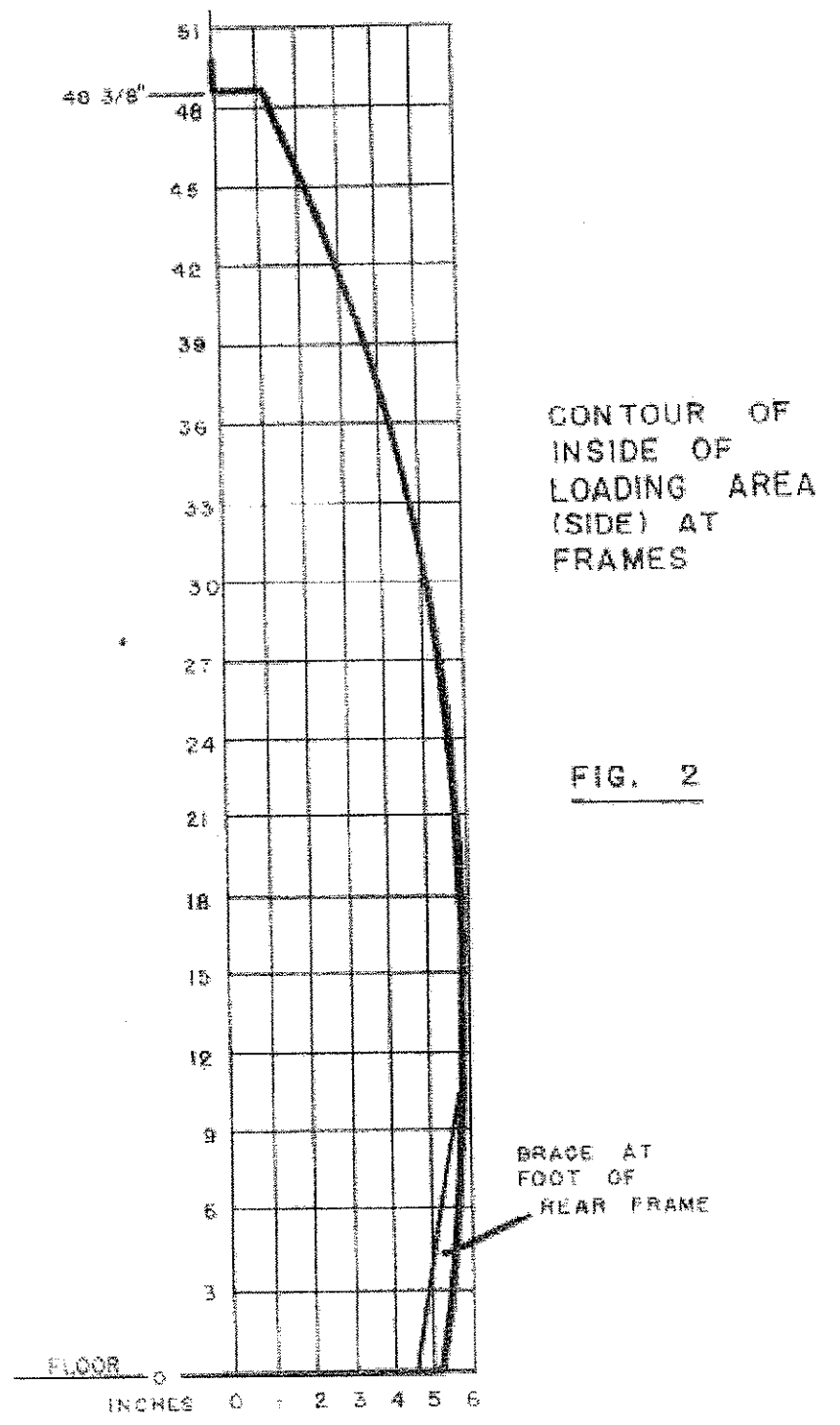


CONTOUR OF FRONT OF ENGINE  
COMPARTMENT



CONTOUR OF TWO  
MAIN FRAMES OVER  
INSIDE OF ROOF  
(ONE HALF SHOWN)

FIG. 1

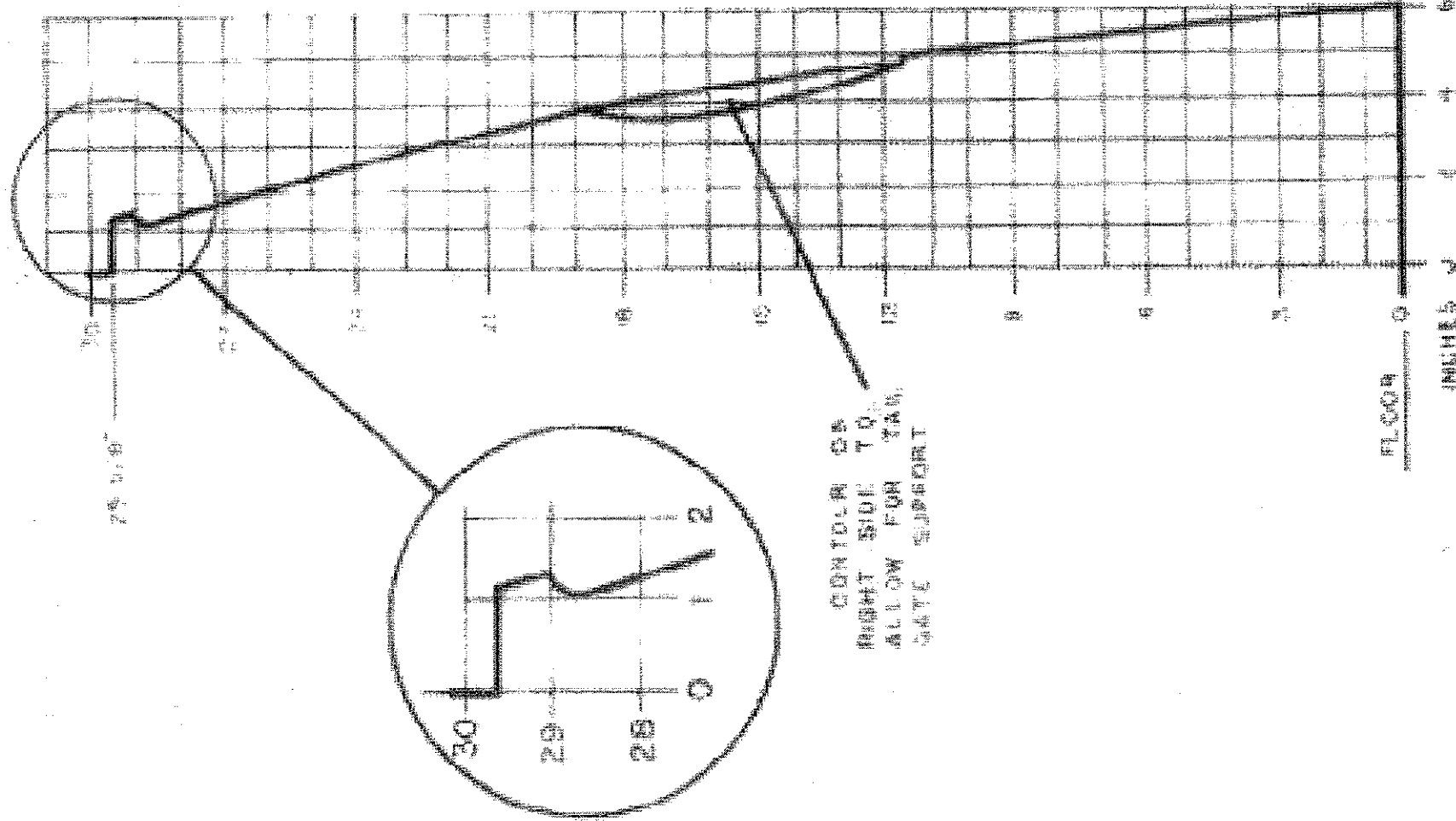


CONTOUR OF  
INSIDE OF  
LOADING AREA  
(SIDE) AT  
FRAMES

FIG. 2

BRACE AT  
FOOT OF  
REAR FRAME

HORIZONTAL SCALE EXPANDED FOR CLARITY



CONTOUR OF  
 REAR ON INSIDE  
 OF TAIL GATE  
 - BOTH SIDES

CONTOUR OF  
 RIGHT SIDE TO  
 ALLOW FOR TAIL  
 GATE SUPPORT

FIG. 3