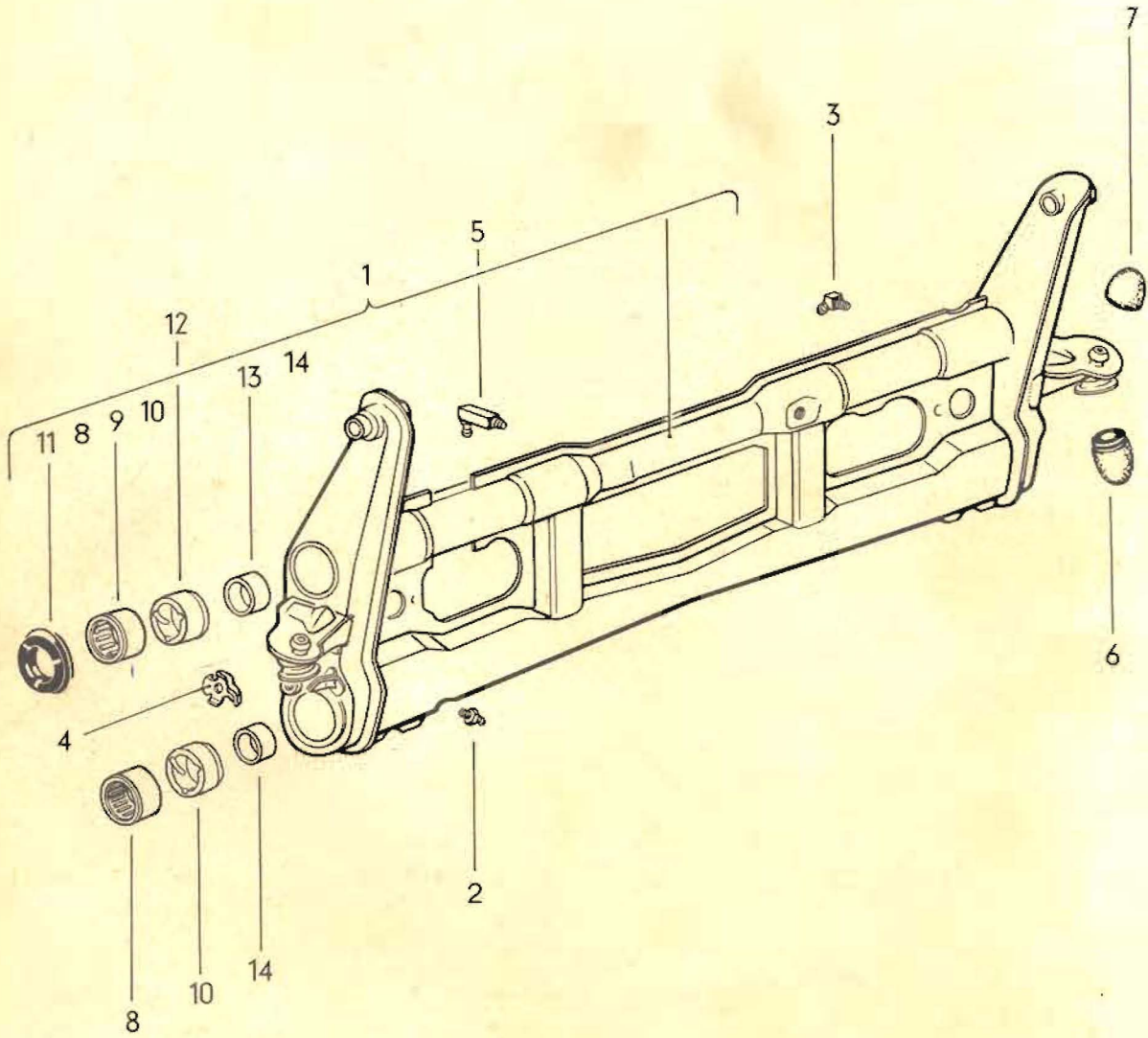


**FRONT AXLE
STEERING**

| | Illustration |
|---|--------------|
| 00 Front axle | - |
| 01 Front axle beam | 23 |
| 05 Front suspension | A 23 |
| 11 Springs, front | B 23 |
| 13 Shock absorbers, front | B 23 |
| 15 Steering gear | 24 |
| 15 Steering wheel, steering column | A 24 |
| 15 Steering drop arm, tie rods, steering damper | B 24 |
| 98 Repair kits | - |



| Key | Part No. | Description | Qty. | Type and model |
|------------------------|---------------|--|------|---|
| FRONT AXLE | | | | |
| - | 311 400 025 J | Front axle from Ch. No. 316 000 001 to 311 2500 000 Replace for Models 361, 363, 365, 367 except M 267; M 249: 361, 363, 365, 367: 311 411 309 by 361 411 309 for Models 343, 345: 311 415 371 A by 341 415 371 A 311 415 818 B by 341 415 818 B | 1 | 311,313,315,317,343, 345,361,363,365,367 |
| - | 311 400 025 L | Front axle from Ch. No. 312 2000 001 | 1 | 311,313,315,317, 361,363,365,367 |
| - | 312 400 025 J | Front axle from Ch. No. 316 000 001 to 311 2500 000 Replace for Models 362, 364, 366, 368; M 249: 362, 364, 366, 368: except M 267 311 411 309 by 361 411 309 for Models 344, 346: 312 415 371 A by 344 415 371 A 311 415 818 B by 341 415 818 B | 1 | 312,314,316,318,344, 346,362,364,366,368 |
| - | 312 400 025 L | Front axle from Ch. No. 312 2000 001 | 1 | 312,314,316,318, 362,364,366,368 |
| - | 361 400 025 N | Front axle from Ch. No. 362 200 001 | 1 | M 594 |
| FRONT AXLE BEAM | | | | |
| 1 | 311 401 021 B | Front axle beam use to Ch. No. 127 587 311 405 105 A/106 A/129 A/151 C/152 C/ 131 405 129/311 705 237 B/261 A from Ch. No. 127 588 to 483 592 311 405 105 A/106 A/129 A/311 705 237 B/261 A additionally to Ch. No. 315 206 671 311 401 205 A | 1 | 311,313,315,317,343, 345,361,363,365,367 |
| (1) | 312 401 021 B | Front axle beam use to Ch. No. 127 587 311 405 105 A/106 A/129 A/151 C/152 C/ 131 405 129/311 705 237 B/261 A from Ch. No. 127 588 to 483 592 311 405 105 A/106 A/129 A/311 705 237 B/261 A additionally to Ch. No. 315 206 671 311 401 205 A | 1 | 312,314,316,318,344, 346,362,364,366,368 |

| | | | |
|------|---------------|--|---|
| 2 | N 18 515 1 | Grease nipple A 6 | 2 |
| 3 | N 18 523 1 | Grease nipple B 6 | 2 |
| 4 | 311 401 205 A | Securing plate for torsion arm 311 405 151 C/152 C | 2 |
| 5 | 311 401 245 | Grease nipple A 6 x 28 from Ch. No. 315 000 001 to 315 057 000 | 2 |
| 6 | 311 401 273 A | Rubber stop - Torsion arm, lower | 2 |
| 7 | 311 401 275 | Rubber stop - Torsion arm, upper | 2 |
| (8) | 311 401 301 | Needle bearing (47 mm dia.) for torsion arm, lower to Ch. No. 127 587 | 2 |
| (8) | 311 401 301 A | Needle bearing (47.2 mm dia.) for torsion arm, lower to Ch. No. 127 587 | X |
| 8 | 311 401 301 C | Needle bearing (50 mm dia.) for torsion arm, lower from Ch. No. 127 588 | 2 |
| (8) | 311 401 301 D | Needle bearing (50.2 mm dia.) for torsion arm, lower from Ch. No. 127 588 | X |
| (8) | 311 401 303 | Bush (47 mm dia.) for torsion arm, lower to Ch. No. 127 587 use: 311 405 151 C/152 C | X |
| (8) | 311 401 303 A | Bush (47.2 mm dia.) for torsion arm, lower to Ch. No. 127 587 use: 311 405 151 C/152 C | X |
| 9 | 311 401 305 | Needle bearing (44 mm dia.) for torsion arm, upper | 2 |
| (9) | 311 401 305 A | Needle bearing (44.2 mm dia.) for torsion arm, upper | X |
| 10 | 311 401 311 | Synthetic bush - Torsion arm, lower to Ch. No. 483 592 | 2 |
| 11 | 311 401 317 | Thrust ring (44.15 mm dia.) for torsion arm, upper from Ch. No. 315 000 001 | 2 |
| (11) | 311 401 317 A | Thrust ring (44.35 mm dia.) for torsion arm, upper from Ch. No. 315 000 001 | X |
| (11) | 311 401 319 B | Thrust ring (44.15 mm dia.) for torsion arm, upper to Ch. No. 483 592 | 2 |
| (11) | 311 401 319 C | Thrust ring (44.35 mm dia.) for torsion arm, upper to Ch. No. 483 592 | X |

| | | | |
|----|---------------|---|---|
| 12 | 311 401 323 | Synthetic bush - Torsion arm, upper to Ch. No. 483 592 | 2 |
| 13 | 311 401 331 B | Metal bush - Torsion arm, upper from Ch. No. 315 000 001 | 2 |
| 14 | 311 401 335 A | Metal bush - Torsion arm, lower from Ch. No. 315 000 001 | 2 |

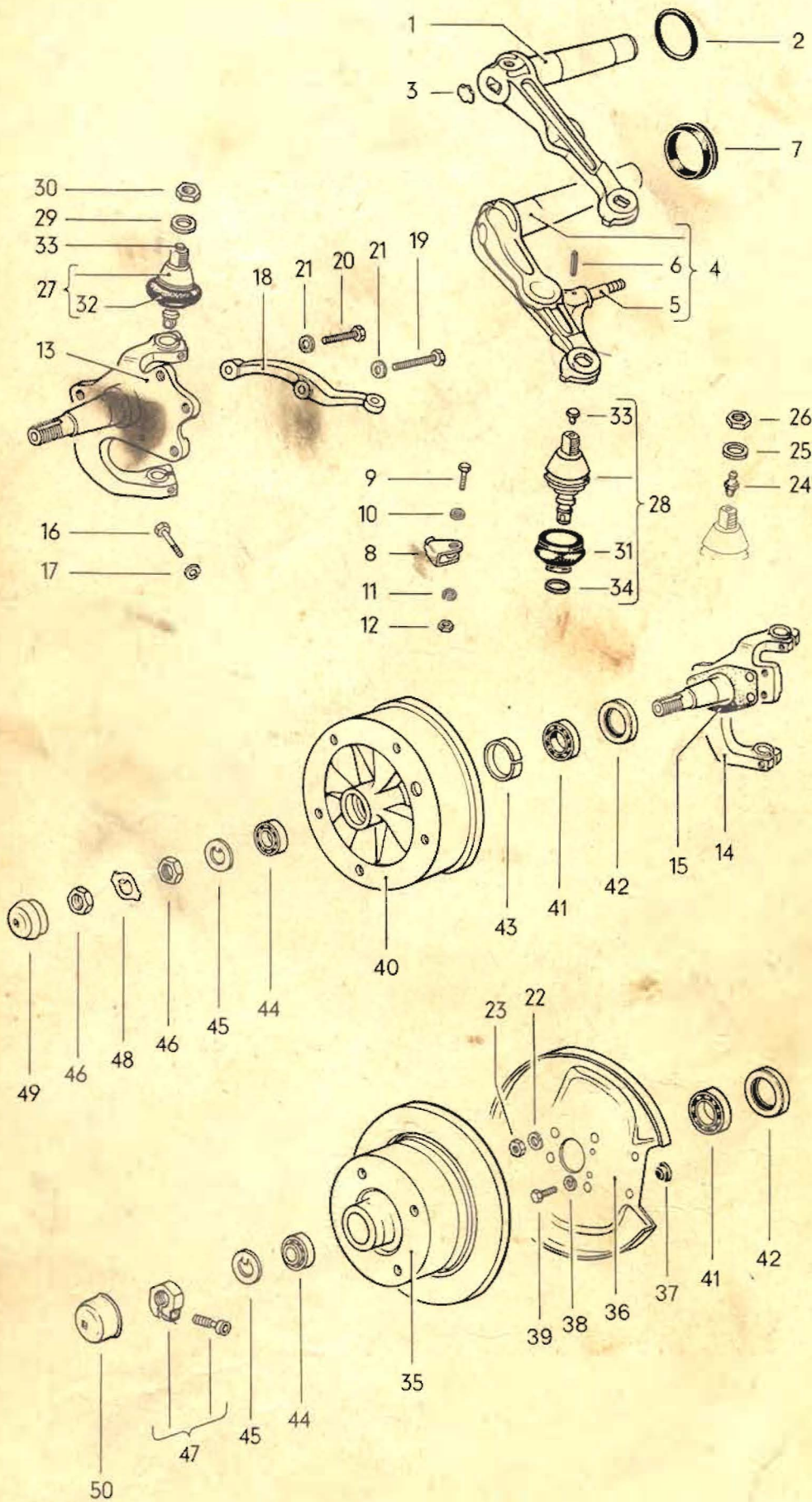


Illustration A 23
Supplement 8

MAIN GROUP 4

FRONT AXLE
STEERING

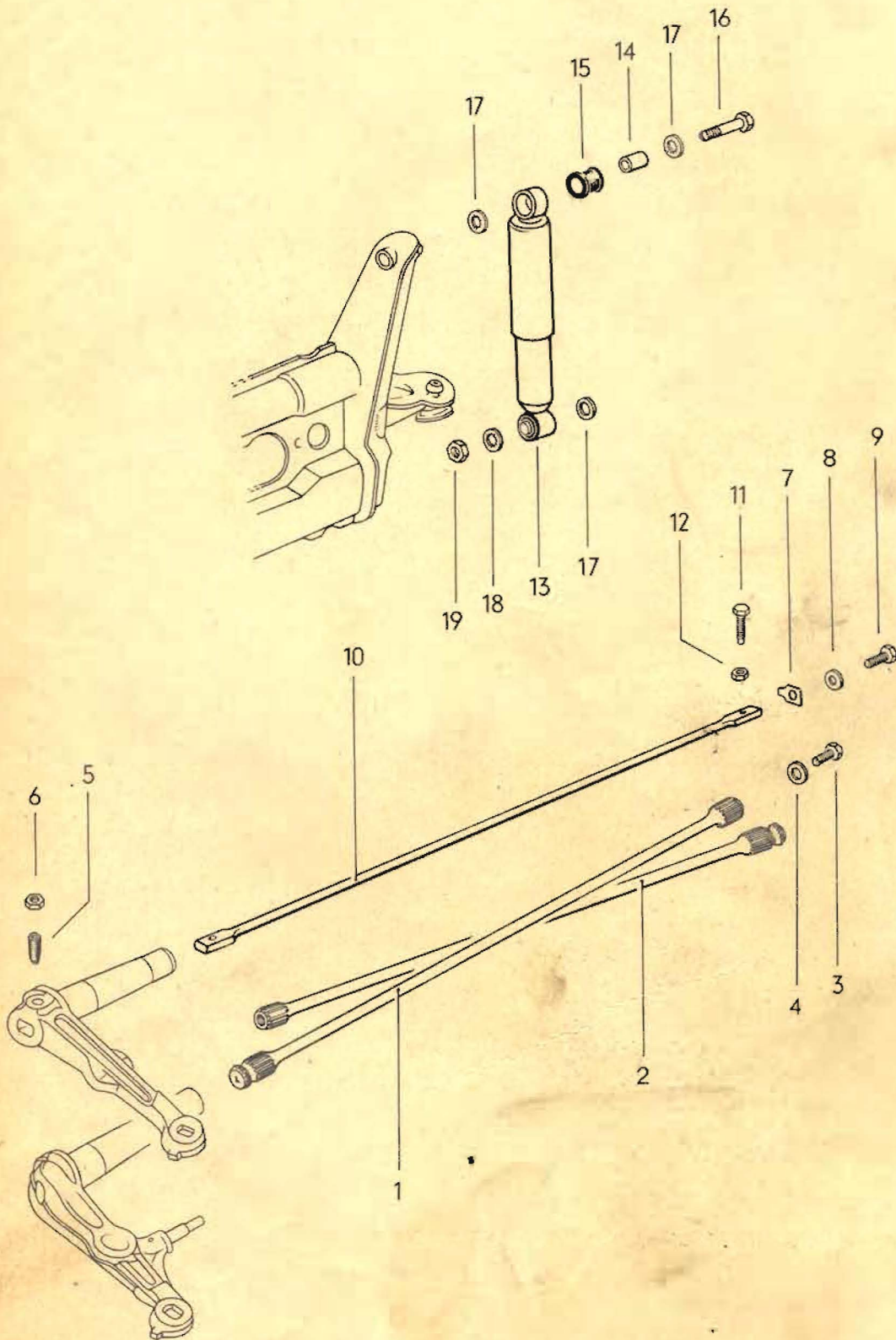
| Key | Part No. | Description | Qty. | Type and model |
|-------------------------|---------------|--|------|----------------|
| FRONT SUSPENSION | | | | |
| (1) | 311 405 105 A | Torsion arm, upper left from Ch. No. 315 000 001 | 1 | |
| (1) | 311 405 105 B | Torsion arm, upper, left to Ch. No. 483 592 use 311 401 317 or 311 401 317 A and 311 405 129 A | 1 | |
| (1) | 311 405 106 A | Torsion arm, upper, right from Ch. No. 315 000 001 | 1 | |
| (1) | 311 405 106 B | Torsion arm, upper, right to Ch. No. 483 592 use 311 401 317 or 311 401 317 A and 311 405 129 A | 1 | |
| (2) | 311 405 129 | Seal for torsion arm, upper to Ch. No. 483 592 | 2 | |
| 2 | 311 405 129 A | Seal for torsion arm, upper from Ch. No. 315 000 001 | 2 | |
| 3 | 311 405 141 | Expansion plug for torsion arm, upper, left from Ch. No. 315 067 000 | 1 | |
| 4 | 311 405 151 C | Torsion arm, lower, left use to Ch. No. 127 587 311 401 303 or 311 401 303 A additionally to Ch. No. 483 592 131 405 129 additionally to Ch. No. 315 206 671 311 401 205 A | 1 | |
| (4) | 311 405 152 C | Torsion arm, lower, right use to Ch. No. 127 587 311 401 303 or 311 401 303 A additionally to Ch. No. 483 592 131 405 129 additionally to Ch. No. 315 206 671 311 401 205 A | 1 | |
| 5 | 111 405 175 A | Mounting bolt, lower - Shock absorber (oversize) | X | |
| 6 | N 12 825 1 | Dowel pin grooved 4 x 25 | X | |

| | | | |
|------|---------------|--|---|
| (7) | 311 405 179 | Seal 56 mm dia. for torsion arm, lower to Ch. No. 127 587 | 2 |
| (7) | 311 405 179 A | Seal 59 mm dia. for torsion arm, lower from Ch. No. 127 588 to 483 592 | 2 |
| 7 | 131 405 129 | Seal for torsion arm, lower from Ch. No. 315 000 001 | 2 |
| 8 | 311 405 185 | Stop - Steering knuckle | 2 |
| 9 | N 10 247 3 | Bolt, hex. hd. M 8 x 35 | 2 |
| 10 | N 11 670 1 | Washer 8.1 | 2 |
| 11 | N 12 008 2 | Lock washer B 8 | 2 |
| 12 | N 11 008 8 | Nut, hex. M 8 | 2 |
| 13 | 311 405 311 D | Steering knuckle, left from Ch. No. 312 2000 001 | 1 |
| 14 | 311 405 311 E | Steering knuckle, left to Ch. No. 315 220 883 use 311 405 625 A/641 B additionally to Ch. No. 315 067 550 311 405 643 | 1 |
| (13) | 311 405 311 F | Steering knuckle, left from Ch. No. 316 000 001 to 311 2500 000 use 311 405 625 A/641 B from Ch. No. 316 000 001 to 318 198 212 | 1 |
| (13) | 311 405 312 D | Steering knuckle, right from Ch. No. 312 2000 001 | 1 |
| (14) | 311 405 312 E | Steering knuckle, right to Ch. No. 315 220 883 use 311 405 625 A/641 B additionally to Ch. No. 315 067 550 311 405 643 | 1 |
| (13) | 311 405 312 F | Steering knuckle, right from Ch. No. 316 000 001 to 311 2500 000 use from Ch. No. 316 000 001 to 318 198 212 311 405 625 A/641 B | 1 |
| 15 | 311 405 313 | Gasket - Steering knuckle to Ch. No. 315 220 883 | 2 |
| | 311 405 321 | Bolt, hex. hd. M 8 x 40 for ball joints, upper and lower to Ch. No. 273 513 | 4 |
| | | Lock washer A 8 | 4 |

| | | | |
|------|---------------|--|---|
| 16 | 311 405 321 A | Bolt, hex. hd. M 10 x 40 for ball joints, upper and lower from Ch. No. 273 514 | 4 |
| 17 | N 12 011 2 | Lock washer A 10 | 4 |
| 18 | 311 405 325 A | Steering arm, left use 311 415 811 C/N 11 212 2 to Ch. No. 317 500 000 | 1 |
| (18) | 311 405 326 A | Steering arm, right use 311 415 812 C/N 11 212 2 to Ch. No. 317 500 000 | 1 |
| (20) | 311 405 341 | Bolt, hex. hd. M 10 x 1 x 62 to Ch. No. 315 220 883 | 2 |
| 19 | 311 405 343 | Bolt, hex. hd. M 10 x 1 x 52 | 2 |
| (20) | 311 405 343 A | Bolt, hex. hd. M 10 x 1 x 38 from Ch. No. 316 000 001 to 311 2500 000 | 2 |
| 20 | 311 405 343 B | Bolt, hex. hd. M 10 x 1 x 42 from Ch. No. 312 2000 001 | 2 |
| 21 | N 12 110 1 | Spring washer A 10.5 | 4 |
| 22 | N 12 010 2 | Lock washer B 10 | 4 |
| 23 | N 11 137 1 | Nut, hex. M 10 x 1 | 4 |
| 24 | N 18 515 1 | Grease nipple A 6 for ball joints, upper and lower to Ch. No. 167 880 | 4 |
| 25 | N 12 115 1 | Spring washer A 19 for ball joints, upper and lower to Ch. No. 167 880 | 4 |
| 26 | N 11 165 3 | Nut, hex. M 18 x 1.5 for ball joints, upper and lower to Ch. No. 167 880 | 4 |
| (27) | 311 405 361 A | Ball joint, upper to Ch. No. 273 513 | 2 |
| 27 | 311 405 361 B | Ball joint, upper from Ch. No. 273 514 | 2 |
| (28) | 311 405 371 A | Ball joint, lower to Ch. No. 273 513 | 2 |
| 28 | 311 405 371 C | Ball joint, lower from Ch. No. 273 514 | 2 |
| 29 | N 12 240 1 | Spring washer B 20 from Ch. No. 167 881 | 4 |
| 30 | N 11 166 1 | Nut, hex. M 20 x 1.5 from Ch. No. 167 881 | 4 |
| (31) | 311 405 375 | Seal for ball joint, lower 311 405 371 to Ch. No. 167 880 | 2 |
| 31 | 311 405 375 A | Seal for ball joint, lower 311 405 371 A/C | 2 |

| | | | | |
|------|------------------|---|---|-------|
| (32) | 311 405 377 | Seal for ball joint, upper to Ch. No. 167 880 | 2 | |
| 32 | 311 405 377 A | Seal for ball joint, upper 311 405 361 A/B | 2 | |
| 33 | 311 405 381 | Plug for ball joints, upper and lower | 4 | |
| 34 | 311 405 387 A | Retaining ring for seal 311 405 375 A/377 A | 4 | |
| (35) | 311 405 583 A | Brake disc from Ch. No. 316 000 001 to 311 2500 000 | 2 | |
| 35 | 411 407 075 | Brake disc from Ch. No. 312 2000 001 | 2 | |
| (35) | 361 405 075 | Brake disc from Ch. No. 362 2000 001 | 2 | M 594 |
| (36) | 311 405 595 A | Splash shield - Brake disc from Ch. No. 316 000 001 to 311 2500 000 | 2 | |
| 36 | 311 407 165 A | Splash shield, left - Brake disc from Ch. No. 312 2000 001 | 1 | |
| (36) | 311 407 166 A | Splash shield, right - Brake disc from Ch. No. 312 2000 001 | 1 | |
| 37 | 311 405 597 | Plug - Splash shield from Ch. No. 311 2500 000 | 4 | |
| (38) | N 12 006 2 | Lock washer B 6 to Ch. No. 317 117 143 | 2 | |
| 38 | N 12 013 1 | Lock washer B 7 from Ch. No. 317 117 144 | 2 | |
| (39) | N 10 216 8 | Bolt, hex. hd. M 6 x 18 to Ch. No. 317 117 143 | 2 | |
| 39 | N 10 226 1 | Bolt, hex. hd. M 7 x 10 from Ch. No. 317 117 144 | 2 | |
| (40) | 311 405 615 | Brake drum, front to Ch. No. 221 974 | 2 | |
| 40 | 311 405 615 B | Brake drum, front from Ch. No. 221 975 to 315 220 883 use 311 405 641 A from Ch. No. 221 975 to 315 067 550 | 2 | |
| (41) | *311 405 625 | Taper roller bearing, inner - Front wheel to Ch. No. 318 189 212 | 2 | |
| 41 | *311 405 625 A ✓ | Taper roller bearing, inner - Front wheel from Ch. No. 318 189 213 | 2 | |
| (42) | *311 405 641 | Oil seal for front wheel bearing to Ch. No. 315 067 550 | 2 | |
| (42) | *311 405 641 A | Oil seal for front wheel bearing from Ch. No. 315 067 551 to 318 189 212 | 2 | |

| | | | |
|------|----------------|--|---|
| 42 | *311 405 641 B | Oil seal for front wheel bearing from Ch. No. 318 189 213 | 2 |
| 43 | 311 405 643 | Spacer ring for brake drum to Ch. No. 315 067 550 | 2 |
| 44 | *311 405 645 | Taper roller bearing, outer - Front wheel | 2 |
| 45 | *311 405 661 | Thrust washer for front wheel bearing | 2 |
| (46) | N 11 164 2 | Nut, hex. M 16 x 1.5 for steering knuckle to Ch. No. 315 220 883 | 2 |
| 46 | N 11 164 3 | Nut, hex. M 16 x 1.5 left-hand thread for steering knuckle to Ch. No. 315 220 883 | 2 |
| 47 | 131 405 669 | Clamping nut with screw for wheel bearing adjustment, left from Ch. No. 316 000 001 | 1 |
| (47) | 131 405 670 | Clamping nut with screw for wheel bearing adjustment, right from Ch. No. 316 000 001 | 1 |
| 48 | 311 405 681 | Lock plate - Nut, hex. to Ch. No. 315 220 883 ✓ | 2 |
| 49 | 311 405 691 | Grease cap - Front wheel, left to Ch. No. 315 220 883 | 1 |
| 50 | 131 405 691 | Grease cap - Front wheel from Ch. No. 316 000 001 use 311 405 381 | 2 |
| (49) | 311 405 692 | Grease cap - Front wheel, right to Ch. No. 315 220 883 | 1 |

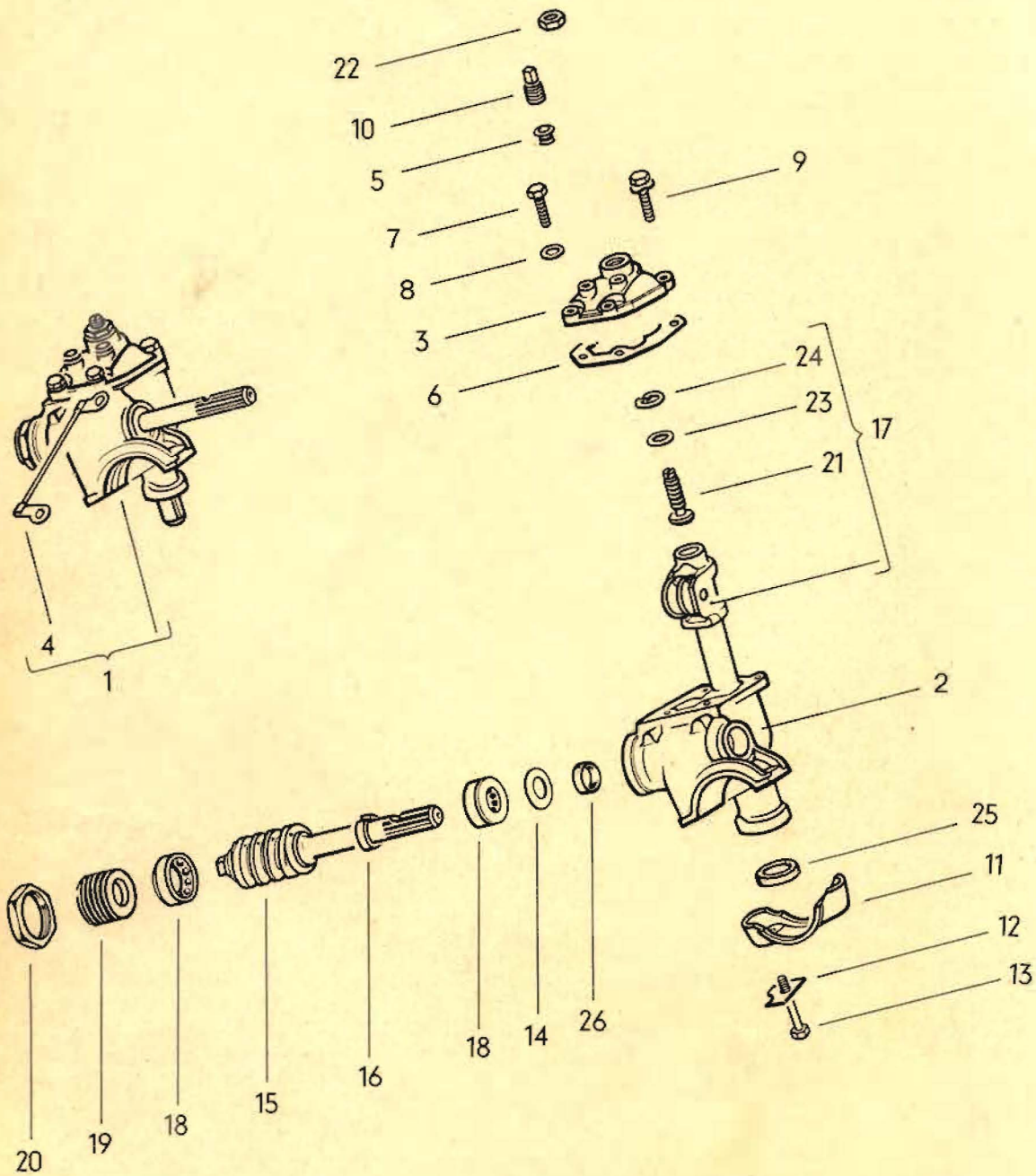


MAIN GROUP 4

**FRONT AXLE
STEERING**

| Key | Part No. | Description | Qty. | Type and model |
|------------------------------|---------------|--|-------------|---|
| FRONT SPRINGS | | | | |
| 1 | 311 411 105 | Torsion bar, left | 1 | |
| 2 | 311 411 106 | Torsion bar, right | 1 | |
| (3) | N 10 058 1 | Bolt, hex. hd. M 10 x 15 to Ch. No. 315 195 499 | 2 | |
| 3 | N 10 059 1 | Bolt, hex. hd. M 10 x 18 from Ch. No. 315 195 500 | 2 | |
| 4 | N 12 230 2 | Spring washer B 10 | 2 | |
| 5 | 111 411 151 | Grub screw for torsion bar and stabilizer mounting | 3 | |
| 6 | 111 411 155 | Lock nut - Grub screw | 3 | |
| 7 | 311 411 161 | Lock plate | 1 | |
| 8 | N 11 670 1 | Washer 8.1 | 1 | |
| 9 | N 10 240 4 | Bolt, hex. hd. M 8 x 20 | 1 | |
| 10 | 311 411 309 | Stabilizer 11.0 mm dia. to Ch. No. 316 500 000 from Ch. No. 317 000 001 to 318 500 000 from Ch. No. 319 000 001 | 1 1 1 | 311-318, 343-346, M 267 311-318, 343-346 |
| (10) | 361 411 309 | Stabilizer 13.7 mm dia. to Ch. No. 366 500 000 from Ch. No. 318 015 226 from Ch. No. 319 000 001 | 1 1 1 | 361-368 M 249: 361-368 361-368 |
| 11 | N 10 062 2 | Bolt, hex. hd. M 10 x 28 | 1 | |
| 12 | N 11 134 2 | Nut, hex. M 10 | 1 | |
| FRONT SHOCK ABSORBERS | | | | |
| (13) | 311 413 031 A | Shock absorber, front (311 431 031/A/K are supplied) to Ch. No. 317 061 599 | 2 | |
| (13) | 311 413 031 D | Shock absorber, front (heavy duty) to Ch. No. 317 061 599 | 2 | |
| 13 | 311 413 031 G | Shock absorber, front (311 413 031 E/F/G/L are supplied) from Ch. No. 317 061 600 | 2 | |
| (13) | 311 413 031 M | Shock absorber, front (heavy duty) from Ch. No. 317 061 600 | 2 | M 103 |
| (13) | 311 413 031 N | Shock absorber, front (adjustable) | 2 | |
| 14 | 111 413 371 A | Bush - Rubber grommet | 4 | |
| 15 | 111 413 381 A | Grommet (rubber) - Shock absorber | 4 | |
| (16) | 111 413 401 A | Bolt - Shock absorber to Ch. No. 64 915 | 2 | |
| 16 | 111 413 403 A | Bolt - Shock absorber from Ch. No. 64 916 | 2 | |

| | | | |
|----|------------|----------------------|---|
| 17 | N 12 112 1 | Spring washer J 12.5 | 6 |
| 18 | N 12 111 1 | Spring washer J 10.5 | 2 |
| 19 | N 11 010 4 | Nut, hex. M 10 | 2 |

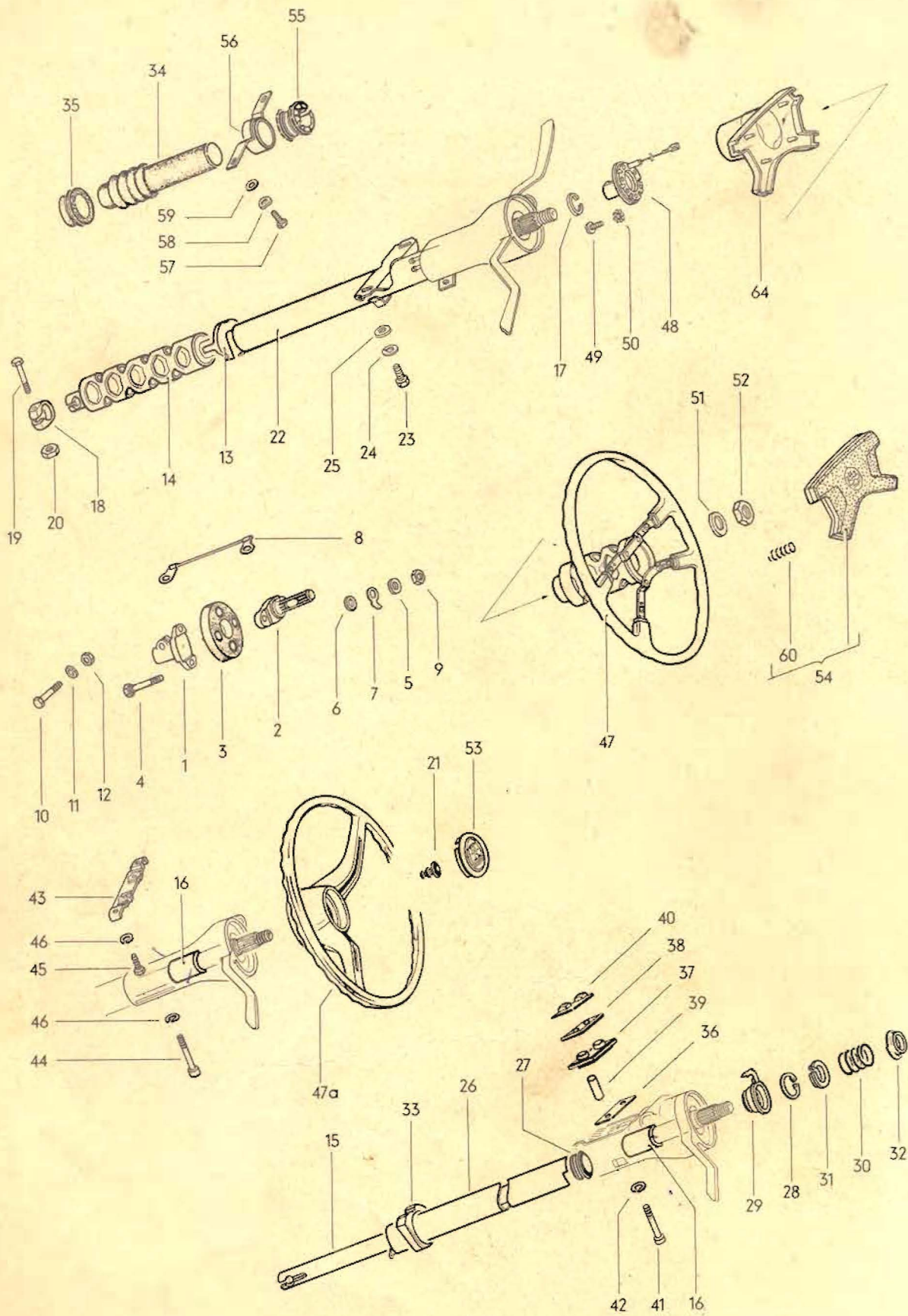


MAIN GROUP 4

**FRONT AXLE
STEERING**

| Key | Part No. | Description | Qty. | Type and model |
|----------------------|---------------|---|------|----------------|
| STEERING GEAR | | | | |
| 1 | 113 415 061 C | Steering gear | 1 | |
| 2 | 311 415 105 A | Case - Steering gear | 1 | |
| 3 | 311 415 129 B | Cover - Steering gear case use: to Ch. No. 315 079 950 311 415 133 | 1 | |
| 4 | 311 971 223 | Ground strap - Steering gear | 1 | |
| 5 | 311 415 133 | Plug - Steering gear case cover from Ch. No. 315 079 951 | 2 | |
| (6) | 311 415 135 | Gasket - Steering gear case cover to Ch. No. 311 2131 805 | 1 | |
| 6 | 311 415 135 A | Gasket - Steering gear case cover from Ch. No. 311 2131 806 | 1 | |
| 7 | N 10 240 4 | Bolt, hex. hd. M 8 x 20 to Ch. No. 311 2131 805 | 4 | |
| 8 | N 12 241 2 | Spring washer B 8 x 15 to Ch. No. 311 2131 805 | 4 | |
| 9 | N 10 242 5 | Bolt, hex. hd. M 8 x 25 from Ch. No. 311 2131 806 | 4 | |
| (8) | N 12 228 2 | Spring washer B 8 from Ch. No. 311 2131 806 | 4 | |
| 10 | 311 415 139 | Plug M 14 x 1.5 to Ch. No. 315 079 950 | 1 | |
| 11 | 311 415 155 | Mounting clamp - Steering gear | 1 | |
| 12 | 111 415 159 | Lock plate for mounting clamp | 2 | |
| 13 | N 10 448 2 | Bolt, hex. hd. M 10 x 48 | 2 | |
| 14 | 311 415 193 | Shim 0.20 mm for steering worm | X | |
| (14) | 311 415 194 | Shim 0.25 mm for steering worm | X | |
| (14) | 311 415 195 | Shim 0.30 mm for steering worm | X | |
| (14) | 311 415 196 | Shim 0.35 mm for steering worm | X | |
| (14) | 311 415 197 | Shim 0.40 mm for steering worm | X | |
| (14) | 311 415 198 | Shim 0.45 mm for steering worm | X | |
| (14) | 311 415 199 | Shim 0.50 mm for steering worm | X | |
| 15 | 311 415 205 | Steering worm | 1 | |

| | | | |
|------|---------------|---|---|
| 16 | 311 415 213 | Identification ring for steering worm | 1 |
| 17 | 311 415 217 B | Steering roller shaft | 1 |
| 18 | 411 417 225 | Ball bearing for steering worm | 2 |
| 19 | 311 415 251 | Adjusting screw – Steering worm | 1 |
| 20 | 311 415 261 | Lock nut – Adjusting screw | 1 |
| 21 | 113 415 263 | Adjusting screw – Steering roller shaft | 1 |
| 22 | N 11 157 1 | Nut, hex. M 10 x 1 | 1 |
| 23 | 311 415 265 | Shim 2.0 mm for steering roller shaft | X |
| (23) | 311 415 266 | Shim 2.05 mm for steering roller shaft | X |
| (23) | 311 415 267 | Shim 2.10 mm for steering roller shaft | X |
| (23) | 311 415 268 | Shim 2.15 mm for steering roller shaft | X |
| (23) | 311 415 269 | Shim 2.20 mm for steering roller shaft | X |
| (23) | 311 415 270 | Shim 2.25 mm for steering roller shaft | X |
| 24 | N 12 307 1 | Lockring 17 x 1 | 1 |
| 25 | N 14 905 1 | Seal B 24 x 37 for steering roller shaft | 1 |
| 26 | 311 415 277 | Seal – Steering worm | 1 |

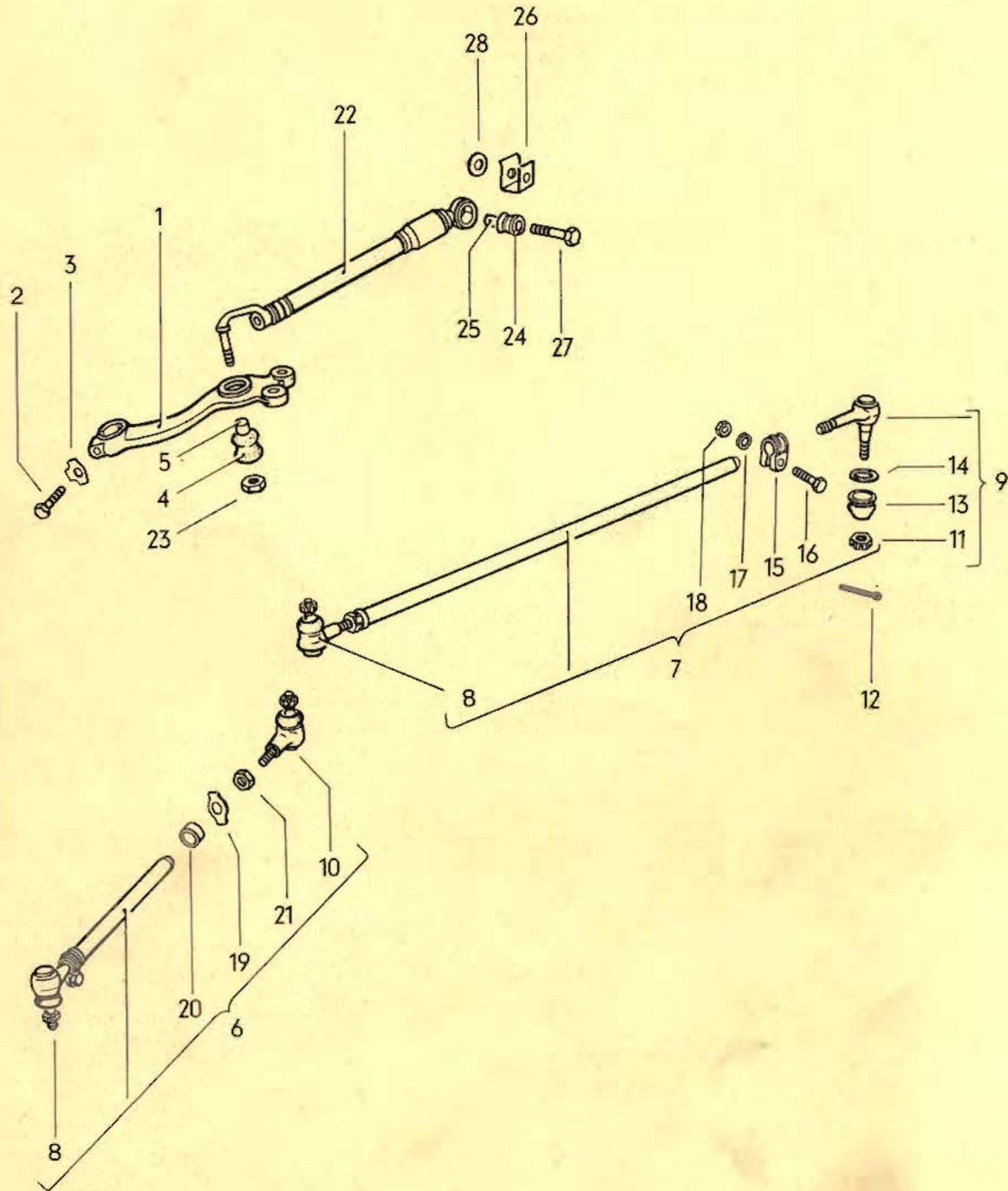


| Key | Part No. | Description | Qty. | Type and model |
|--|---------------|---|------|------------------|
| STEERING WHEEL, STEERING COLUMN | | | | |
| 1 | 111 415 409 | Flange for steering worm | 1 | |
| 2 | 311 415 413 | Flange for steering column | 1 | |
| 3 | 111 415 417 | Coupling disc | 1 | |
| 4 | 113 415 421 | Bolt, hex. hd. M 8 x 32 for coupling disc | 4 | |
| 5 | N 12 228 2 | Spring washer B 8 | 4 | |
| 6 | N 12 108 2 | Spring washer A 8.4 to Ch. No. 310 2500 000 | 1 | |
| 7 | 311 971 935 | Push-on connector for coupling disc to Ch. No. 310 2500 000 | 1 | |
| 8 | 111 971 246 | Ground strap for coupling disc from Ch. No. 311 2000 001 | 1 | |
| 9 | 113 415 431 A | Nut, hex. M 8 (self-locking) for coupling disc | 4 | |
| 10 | 111 415 421 | Bolt, hex. hd. M 8 x 32 for steering worm flange | 1 | |
| 11 | N 12 241 2 | Spring washer B 8 x 15 | 1 | |
| 12 | 113 415 431 A | Nut, hex. M 8 (self-locking) | 1 | |
| (13) | 311 415 475 | Thrust ring - Steering column from Ch. No. 318 000 001 to 319 500 000 | 1 | |
| 13 | 311 415 475 A | Thrust ring - Steering column from Ch. No. 310 2000 001 | 1 | |
| (14) | 311 415 501 C | Steering column to Ch. No. 311 2500 000 use: from Ch. No. 318 000 001 to 311 2500 000 111 953 535 D | 1 | 311-318, 361-368 |
| 14 | 311 425 501 D | Steering column from Ch. No. 312 2000 001 | 1 | |
| 15 | 311 415 505 | Steering column to Ch. No. 317 500 000 | 1 | 311-318, 361-368 |
| (15) | 341 415 505 | Steering column to Ch. No. 349 500 000 | 1 | 343-346 |
| 16 | 111 415 521 D | Locking shell to Ch. No. 310 2500 000 | 2 | |
| 17 | 113 415 531 | Lock ring - Steering column | 1 | |
| 18 | 111 415 539 | Clamp - Steering column | 1 | |
| 19 | N 10 340 4 | Bolt, hex. hd. M 8 x 40 | 1 | |

| | | | | |
|------|---------------|---|---|---|
| 20 | 113 415 431 A | Nut, hex. M 8 (self-locking) | 1 | |
| 21 | 311 415 535 | Retaining plug – Steering column from Ch. No. 318 000 001 | 1 | |
| 22 | 311 425 555 A | Tube – Steering column from Ch. No. 312 2000 001 | 1 | |
| 23 | N 10 238 7 | Bolt, hex. hd. M 8 | 2 | |
| 24 | N 12 241 2 | Spring washer B 8 | 2 | |
| 25 | N 11 525 2 | Washer A 8.4 | 2 | |
| (22) | 113 415 565 F | Tube – Steering column from Ch. No. 318 000 001 to 311 2500 000 from Ch. No. 319 121 437 (LHD) from Ch. No. 310 2000 001 (LHD) and (RHD) (shorten to 375 mm – 10 ¹³ / ₁₆ in.) | 1 | |
| 26 | 341 415 565 | Tube – Steering column to Ch. No. 317 500 000 | 1 | |
| 27 | 311 415 573 | Seal – Steering column tube to Ch. No. 317 500 000 | 1 | |
| 28 | 311 415 583 | Lockring – Ball bearing to Ch. No. 317 500 000 | 1 | |
| 29 | 311 415 585 | Ball bearing – Steering column to Ch. No. 317 500 000 | 1 | |
| 30 | 113 415 587 A | Thurst spring 33 mm – 1 ⁵ / ₁₆ in. to Ch. No. 317 500 000 | 1 | |
| 31 | 113 415 589 A | Thurst ring – Thrust spring to Ch. No. 317 500 000 | 1 | |
| 32 | 113 415 593 A | Washer to Ch. No. 317 500 000 | 1 | |
| 33 | 311 415 603 | Rubber mounting, lower for steering column tube to Ch. No. 317 500 000 | 1 | |
| (34) | 311 415 605 | Boot – Steering column tube from Ch. No. 319 121 437 to 319 500 000 | 1 | 311, 313, 315, 317, 361, 363, 365, 367 |
| 34 | 311 415 605 B | Boot – Steering column tube from Ch. No. 310 2000 001 | 1 | |
| (35) | 311 415 607 | Rubber mounting 39 x 47, lower for steering column tube from Ch. No. 318 000 001 to 319 500 000 | 1 | |
| 35 | 311 415 607 A | Rubber mounting 39 x 52, lower for steering column tube from Ch. No. 310 2000 001 | 1 | |
| 36 | 311 415 609 | Plate for rubber mounting, upper to Ch. No. 317 500 000 | 1 | |
| 37 | 311 415 613 | Rubber mounting, upper, inner for steering column tube to Ch. No. 317 500 000 | 1 | |

| | | | | |
|-------|---------------|---|---|------------------|
| 38 | 311 415 615 | Rubber mounting upper, outer for steering column tube to Ch. No. 317 500 000 | 1 | 311-318, 361-368 |
| (38) | 341 415 617 A | Rubber mounting, upper outer, with mounting plate - Steering column tube to Ch. No. 349 500 000 | 1 | 343-346 |
| 39 | 311 415 619 | Spacer sleeve to Ch. No. 315 020 907 | 2 | |
| | | from Ch. No. 315 020 908 to 317 500 000 | 2 | 311-318, 361-368 |
| (39) | 343 415 619 | Spacer sleeve from Ch. No. 345 020 908 to 349 500 000 | 2 | 343-346 |
| 40 | 311 415 621 | Mounting plate to Ch. No. 317 500 000 | 1 | 311-318, 361-368 |
| 41 | N 14 711 1 | Screw, cheese hd. M 8 x 65 to Ch. No. 315 020 907 | 2 | |
| | | from Ch. No. 315 020 908 to 317 500 000 | 2 | 311-318, 361-368 |
| (41) | N 14 714 1 | Screw, cheese hd. M 8 x 60 from Ch. No. 345 020 908 to 347 500 000 | 2 | 343-346 |
| 42 | N 12 008 2 | Lock washer B 8 | 2 | |
| 43 | 113 415 635 | Mounting plate - Steering column tube from Ch. No. 318 000 001 to 311 2500 000 | 1 | |
| 44 | N 14 713 2 | Screw, cheese hd. M 8 x 35 | 2 | |
| 45 | N 10 238 7 | Bolt, hex. hd. M 8 x 15 | 2 | |
| 46 | N 12 008 2 | Lock washer B 8 | 4 | |
| 47 | 113 415 651 H | Steering wheel from Ch. No. 312 2000 001 | 1 | |
| (47a) | 311 415 651 A | Steering wheel to Ch. No. 310 2500 000 use: 113 951 531 F to Ch. No. 221 974 | 1 | |
| | 4/61 - 7/70 | ● 043 grey-black superseded by: 311 415 651 D (043) | | |
| | 8/65 - 12/65 | 651 pigalle - 79 | | |
| | 8/65 - 12/65 | 671 teak - 51 | | |
| 47a | 311 415 651 D | Steering wheel from Ch. No. 311 2000 001 to 311 2500 000 043 grey-black | 1 | |
| | 8/70 - 7/71 | | | |
| 48 | 113 415 660 A | Cancelling ring with contact ring for indicator switch from Ch. No. 312 2000 001 | 1 | |
| (48) | 311 415 660 | Cancelling ring with contact ring for indicator switch from Ch. No. 311 2000 001. | 1 | |
| (48) | 113 415 661 B | Self-cancelling ring for turn signal switch to Ch. No. 317 500 000 | 1 | 311-318, 361-368 |

| | | | | |
|------|---------------|--|---|---|
| (48) | 113 415 661 C | Self-cancelling ring for turn signal switch from Ch. No. 318 000 001 to 310 2500 000 | 1 | 311-318, 361-368 |
| (48) | 341 415 661 A | Self-cancelling ring for turn signal switch to Ch. No. 349 500 000 | 1 | 343-346 |
| 49 | N 10 803 1 | Screw, fillister hd. AM 3.5 x 10 | 3 | |
| 50 | N 12 131 2 | Shake-proof washer J 3.7 | 3 | |
| 51 | N 12 239 1 | Spring washer B 18 | 1 | |
| 52 | N 11 165 3 | Nut, hex. M 18 x 1.5 | 1 | |
| 53 | 113 415 669 B | Emblem - Horn ring to Ch. No. 311 2500 000 | 1 | |
| 54 | 113 415 669 E | Cover for steering wheel from Ch. No. 312 2000 001 | 1 | |
| 55 | 113 415 767 | Eccentric ring for steering column tube from Ch. No. 319 121 437 to 319 500 000 | 1 | 311, 313, 315, 317, 361, 363, 365, 367 |
| | | from Ch. No. 310 2000 001 | 1 | |
| (56) | 113 415 769 | Bracket for eccentric ring from Ch. No. 319 121 437 to 319 500 000 | 1 | 311, 313, 315, 317, 361, 363, 365, 367 |
| | | from Ch. No. 310 2000 001 to 310 2500 000 | 1 | |
| 56 | 311 415 769 | Bracket for eccentric ring from Ch. No. 311 2000 001 | 1 | 311, 313, 315, 317, 361, 363, 365, 367 |
| (56) | 312 415 769 | Bracket for eccentric ring from Ch. No. 311 2000 001 | 1 | 312, 314, 316, 318, 362, 364, 366, 368 |
| 57 | N 10 238 7 | Bolt, hex. hd. M 8 x 15 | 2 | |
| 58 | N 12 241 2 | Spring washer B 8 x 15 | 2 | |
| 59 | N 11 525 2 | Washer A 8.4 | 2 | |
| 60 | 113 415 673 A | Spring - Cover from Ch. No. 312 2000 001 | 4 | |
| - | 113 415 779 | Insulation bush from Ch. No. 312 2000 001 | 4 | |
| 61 | 113 415 791 A | Trim - Steering wheel from Ch. No. 312 2000 000 | 1 | |



| Key | Part No. | Description | Qty. | Type and model |
|-------------------------------------|---------------|---|------|---|
| STEERING DROP ARM . TIE RODS | | | | |
| STEERING DAMPER | | | | |
| 1 | 311 415 371 A | Steering drop arm use 311 415 811 C/818 B/N 12 212 2/N 12 532 1 to Ch. No. 317 500 000 | 1 | 311, 313, 315, 317, 361, 363, 365, 367 |
| (1) | 312 415 371 A | Steering drop arm use 311 415 811 C/818 B/N 11 212 2/N 12 532 1 to Ch. No. 317 500 000 | 1 | 312, 314, 316, 318, 362, 364, 366, 368 |
| (1) | 341 415 371 | Steering drop arm to Ch. No. 347 500 000 | 1 | 343, 345 |
| (1) | 341 415 371 A | Steering drop arm from Ch. No. 348 000 001 to 349 500 000 | 1 | 343, 345 |
| (1) | 344 415 371 A | Steering drop arm to Ch. No. 349 500 000 use to Ch. No. 348 006 918 311 415 811 C/341 415 818 B/ N 11 212 2/N 12 532 1 | 1 | 344, 346 |
| 2 | 211 415 747 A | Bolt, hex. hd. M 12 x 1.5 x 42 for steering drop arm | 1 | |
| 3 | 111 415 385 | Lock plate | 1 | |
| 4 | 113 415 907 C | Rubber grommet - Steering drop arm | 1 | |
| 5 | 211 415 909 | Bush - Rubber grommet | 1 | |
| 6 | 311 415 801 | Tie rod, left to Ch. No. 317 500 000 for Models 343, 345 replace 311 415 818 by 341 415 818 | 1 | 311, 313, 315, 317, 343, 345, 361, 363, 365, 367 |
| 6 | 311 415 801 B | Tie rod, left from Ch. No. 318 000 001 for Models 343, 345 replace 311 415 818 B by 341 415 818 B | 1 | 311, 313, 315, 317, 343, 345, 361, 363, 365, 367 |
| (6) | 312 415 801 | Tie rod, left to Ch. No. 317 500 000 | 1 | 312, 314, 316, 318, 344, 346, 362, 364, 366, 368 |
| (6) | 312 415 801 B | Tie rod, left from Ch. No. 318 000 001 | 1 | 312, 314, 316, 318, 344, 346, 362, 364, 366, 368 |
| (7) | 311 415 802 | Tie rod, right to Ch. No. 317 500 000 | 1 | 311, 313, 315, 317, 343, 345, 361, 363, 365, 367 |
| 7 | 311 415 802 B | Tie rod, right from Ch. No. 318 000 001 | 1 | 311, 313, 315, 317, 343, 345, 361, 363, 365, 367 |

| | | | | |
|------|---------------|---|---|---|
| (7) | 312 415 802 | Tie rod, right to Ch. No. 317 500 000 for Models 344, 346 replace 311 415 818 B by 341 415 818 B | 1 | 312,314,316,318,344, 346,362,364,366,368 |
| (7) | 312 415 802 B | Tie rod, right from Ch. No. 318 000 001 for Models 344, 346 replace 311 415 818 B by 341 415 818 B | 1 | 312,314,316,318,342, 344,362,364,366,368 |
| (8) | 131 415 811 | Tie rod end, straight, left-hand thread to Ch. No. 317 500 000 | 2 | |
| 8 | 311 415 811 C | Tie rod end, straight, left-hand thread from Ch. No. 318 000 001 | 2 | |
| (9) | 131 415 812 | Tie rod end, straight right-hand thread to Ch. No. 317 500 000 | 1 | |
| 9 | 311 415 812 C | Tie rod end, straight, right-hand thread from Ch. No. 318 000 001 | 1 | |
| (10) | 311 415 818 | Tie rod end, angled 9° to Ch. No. 317 500 000 | 1 | 311-318, 361-368 |
| 10 | 311 415 818 B | Tie rod end, angled 9° from Ch. No. 318 000 001 | 1 | 311-318, 361-368 |
| (10) | 341 415 818 | Tie rod end, angled 20° to Ch. No. 347 500 000 | 1 | 343-346 |
| (10) | 341 415 818 B | Tie rod end, angled 20° from Ch. No. 348 000 001 to 349 500 000 | 1 | 343-346 |
| (11) | N 11 210 1 | Nut, slotted M 10 x 1 to Ch. No. 317 500 000 | 4 | |
| 11 | N 11 212 2 | Nut, slotted M 12 x 1.5 from Ch. No. 318 000 001 | 4 | |
| (12) | N 12 522 1 | Cotter pin 2 x 22 to Ch. No. 317 500 000 | 4 | |
| 12 | N 12 532 1 | Cotter pin 3 x 25 from Ch. No. 318 000 001 | 4 | |
| 13 | 113 415 835 | Dust seal for tie rod end | 4 | |
| 14 | 111 415 837 | Retaining ring 27 mm dia. upper for dust seal | 4 | |
| (14) | 113 415 837 | Retaining ring 8.2 mm dia. lower for dust seal | 4 | |

| | | | |
|------|---------------|--|---|
| 15 | 111 415 841 A | Clamp 18 mm dia. for tie rod (see Workshop Bulletin V 94) | 2 |
| 16 | N 10 171 1 | Bolt, hex. hd. M 8 x 1 x 32 | 2 |
| 17 | N 12 008 2 | Lock washer B 8 | 2 |
| 18 | N 11 018 2 | Nut, hex. M 8 x 1 | 2 |
| 19 | 141 415 851 B | Lock plate | 2 |
| 20 | 141 415 855 A | Taper ring | 2 |
| (21) | N 11 163 3 | Nut, hex. M 14 x 1.5 | 1 |
| 21 | N 11 163 2 | Nut, hex. M 14 x 1.5 left-hand thread | 1 |
| 22 | 311 425 021 | Steering damper | 1 |
| 23 | 411 399 149 | Nut, hex. M 10 x 1 (self-locking) | 1 |
| 24 | 113 415 907 C | Rubber grommet for steering damper 311 415 901/A/D; 312 415 901; 311 425 021 | 1 |
| (24) | 211 415 907 C | Rubber grommet for steering damper 311 415 901 B; 312 415 901 A | 1 |
| 25 | 211 415 909 | Bush - Rubber grommet | 2 |
| 26 | 113 415 949 | Lock plate for steering damper | 1 |
| 27 | N 10 440 1 | Bolt, hex. hd. M 10 x 40 | 1 |
| 28 | 111 101 461 | Washer 10.2 x 24 | 1 |

MAIN GROUP 4

Part No. Description Qty.

REPAIR KITS**311 498 071****Bearing set for 1 front wheel**

to Ch. No. 315 067 550

comprising:

| | | |
|-------------|------------------------------|---|
| 311 405 625 | Bearing inner – Front wheel | 1 |
| 311 405 641 | Oil seal | 1 |
| 311 405 645 | Bearing, outer – Front wheel | 1 |
| 311 405 661 | Thrust washer | 1 |

311 498 071 A**Bearing set for 1 front wheel**

from Ch. No. 315 067 551 to 318 189 212

comprising:

| | | |
|---------------|------------------------------|---|
| 311 405 625 | Bearing, inner – Front wheel | 1 |
| 311 405 641 A | Oil seal | 1 |
| 311 405 645 | Bearing, outer – Front wheel | 1 |
| 311 405 661 | Thrust washer | 1 |

311 498 071 B**Bearing set for 1 front wheel**

from Ch. No. 318 189 213

comprising:

| | | |
|---------------|------------------------------|---|
| 311 405 625 A | Bearing, inner – Front wheel | 1 |
| 311 405 641 B | Oil seal | 1 |
| 311 405 645 | Bearing, outer – Front wheel | 1 |
| 311 405 661 | Thrust washer | 1 |

