

REAR AXLE

	Illustration
01 Swing axle	25
01 Double joint axle	A 25
01 Hub-Rear wheel, brake drum, rear	B 25
07 Rear axle housing (Automatic)	26
11 Rear suspension	27
13 Shock absorbers, rear	27
17 Differential, limited slip differential	28
19 Differential (Automatic)	29
98 Repair kits	-

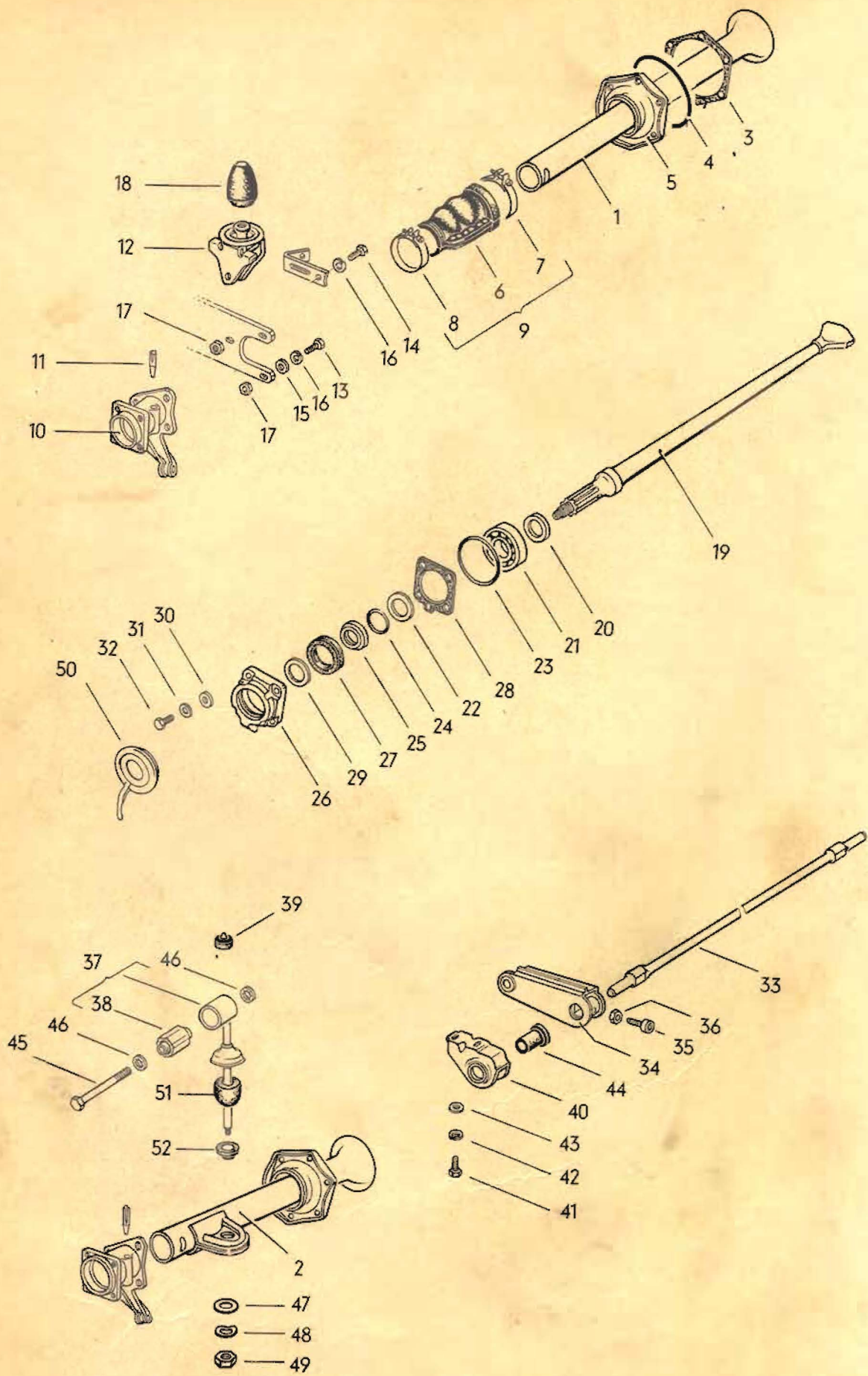


Illustration 25
Supplement 9

MAIN GROUP 5

REAR AXLE

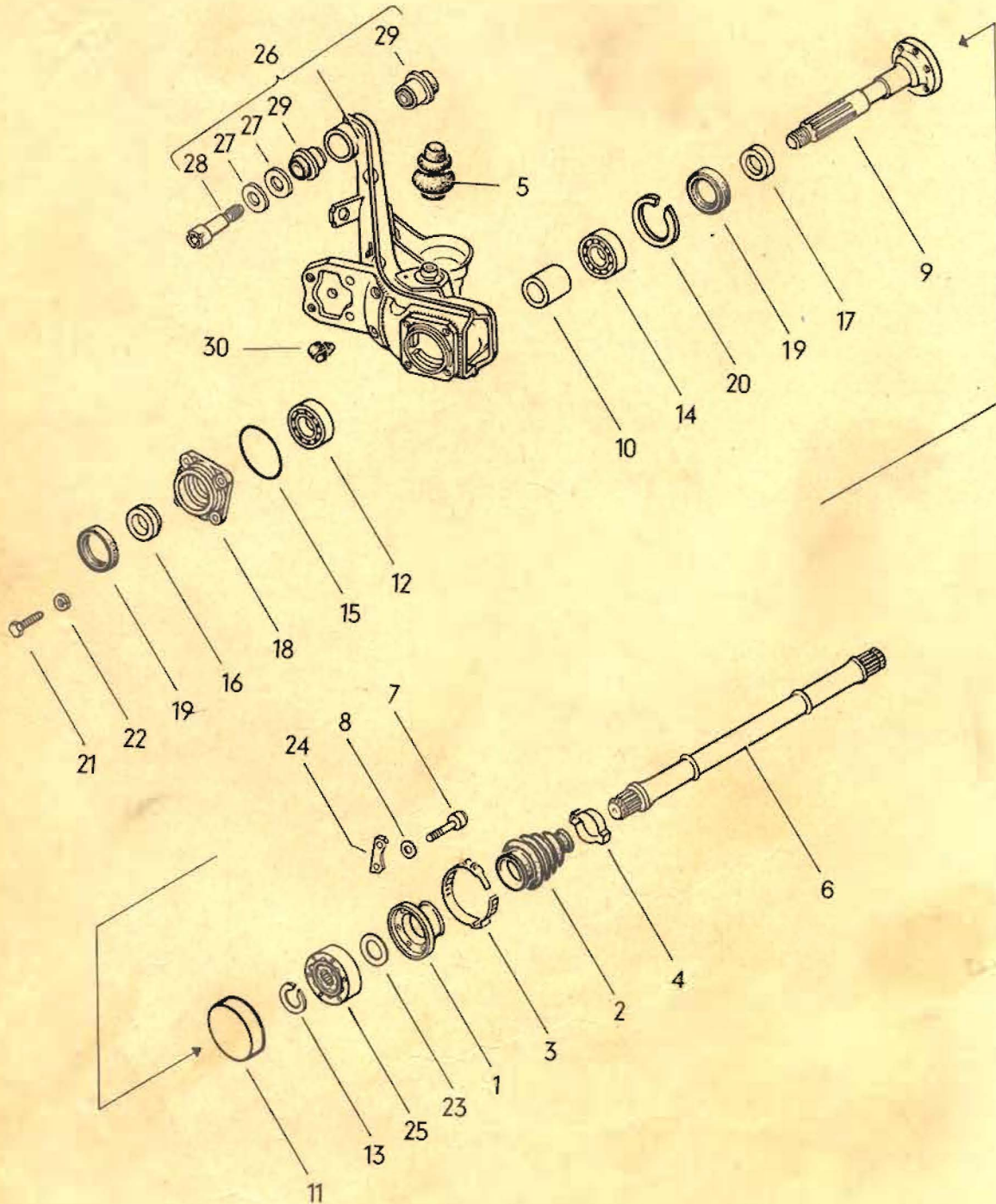
Key	Part No.	Description	Qty.	Type and model
SWING AXLE				
1	111 501 105	Tube – Rear axle to Ch. No. 316 500 000 (to Ch. No. 168 497 see Workshop Manual H-5)	2	
2	361 501 105 A	Tube – Rear axle, left (marked with a white dot) to Ch. No. 366 500 000 from Ch. No. 317 000 001 to 318 500 000 from Ch. No. 369 000 001 use: to Ch. No. 317 170 143 111 501 139	1 1 1	M 267 M 263
(2)	361 501 106 A	Tube – Rear axle, right to Ch. No. 366 500 000 from Ch. No. 317 000 001 to 318 500 000 from Ch. No. 369 000 001 use: to Ch. No. 317 170 143 111 501 139	1 1 1	M 267 M 263
(3)	111 501 131	Gasket 0.2 mm – Rear axle tube retainer to Ch. No. 317 170 143	X	
3	111 501 131 A	Gasket 0.2 mm – Rear axle tube retainer from Ch. No. 317 170 144 to 318 500 000 from Ch. No. 369 000 001	X X	M 263
(3)	111 501 133	Gasket 0.1 mm – Rear axle tube retainer to Ch. No. 317 170 143	X	
(3)	111 501 133 A	Gasket 0.1 mm – Rear axle tube retainer from Ch. No. 317 170 144 to 318 500 000 from Ch. No. 369 000 001	X X	M 263
4	111 501 139	Oil seal – Rear axle tube retainer from Ch. No. 317 170 144 to 318 500 000 from Ch. No. 369 000 001	2 2	M 263
5	111 501 141 B	Retainer – Rear axle tube to Ch. No. 318 500 000 from Ch. No. 369 000 001 use: to Ch. No. 317 170 143 111 501 139	2 2	M 263
6	111 501 151	Dust sleeve – Rear axle tube to Ch. No. 318 500 000 from Ch. No. 369 000 001	2 2	M 263
7	*111 501 157 B	Retaining clip 85–103 mm dia. to Ch. No. 318 500 000 from Ch. No. 369 000 001	2 2	M 263

8	* 111 501 159 B	Retaining clip 44-64 mm dia. to Ch. No. 318 500 000	2	
		from Ch. No. 369 000 001 to 361 2114 245	2	M 263
9	111 598 021 A	Dust sleeve with securing parts to Ch. No. 318 500 000	2	
		from Ch. No. 369 000 001	2	M 263
(10)	311 501 163	Bearing housing - Rear axle, left to Ch. No. 221 974	1	
10	311 501 163 A	Bearing housing - Rear axle, left from Ch. No. 221 975 to 318 500 000	1	
		from Ch. No. 369 000 001	1	M 263
(10)	311 501 164	Bearing housing - Rear axle, right to Ch. No. 221 974	1	
(10)	311 501 164 A	Bearing housing - Rear axle, right from Ch. No. 221 975 to 318 500 000	1	
		from Ch. No. 369 000 001	1	M 263
11	N 12 801 1	Dowel pin, self-locking 10 x 40	2	
12	131 501 189 A	Bumper stop - Spring plate, left to Ch. No. 318 500 000	1	
		from Ch. No. 369 000 001	1	M 263
(12)	131 501 190 A	Bumper stop - Spring plate, right to Ch. No. 318 500 000	1	
		from Ch. No. 369 000 001	1	M 263
13	N 10 127 1	Bolt, hex. hd. AM 12 x 1.5 x 30	4	
14	N 10 137 1	Bolt, hex. hd. M 12 x 1.5 x 35	2	
15	N 11 531 1	Washer A 13	4	
16	N 12 012 2	Lock washer B 12	6	
17	N 11 020 2	Nut, hex. M 12 x 1.5	6	
18	311 501 191	Rubber stop - Spring plate to Ch. No. 316 500 000	2	311-318, 343-346; M 267
		from Ch. No. 317 000 001 to 318 500 000	2	
		from Ch. No. 369 000 001	2	M 263
18	211 501 191	Rubber stop - Spring plate to Ch. No. 366 500 000	2	361-368
(19)	311 501 201 A	Rear axle shaft to Ch. No. 76 299	2	
		001 blue		
		003 pink		
19	311 501 201 D	Rear axle shaft from Ch. No. 76 300 to 318 500 000	2	
		from Ch. No. 369 000 001	2	M 263
		001 blue		
		003 pink		
		002 green		
20	111 501 281 A	Spacer (inner) for rear wheel bearing to Ch. No. 318 500 000	2	
		from Ch. No. 369 000 001	2	M 263

21	311 501 283	Ball bearing – Rear wheel to Ch. No. 318 500 000	2	
		from Ch. No. 369 000 001	2	M 263
22	111 501 286	Washer between rear wheel bearing and spacer		
		to Ch. No. 318 500 000	2	
		from Ch. No. 369 000 001	2	M 263
(23)	111 501 291	Gasket – Bearing cover		
		to Ch. No. 318 500 000	2	
		from Ch. No. 369 000 001 to October 1971	2	M 263
23	113 501 291 A	Gasket – Bearing cover	2	M 263
		from Ch. No. November 1971		
24	111 501 296	Gasket between spacer and rear wheel bearing		
		to Ch. No. 318 500 000	2	
		from Ch. No. 369 000 001	2	M 263
(25)	111 501 303 A	Spacer, outer – Rear wheel bearing		
		to Ch. No. 318 500 000	2	
		from Ch. No. 369 000 001 to 361 2218 303	2	M 263
25	111 501 303 B	Spacer, outer – Rear wheel bearing	2	M 263
		from Ch. No. 361 2218 304		
26	111 501 311 B	Cover – Rear wheel bearing	2	
		to Ch. No. 76 299		
(26)	311 501 311	Cover – Rear wheel bearing	2	
		from Ch. No. 76 300 to 221 974		
(26)	311 501 311 A	Cover – Rear wheel bearing		
		from Ch. No. 221 975 to 318 500 000	2	
		from Ch. No. 369 000 001 to 361 2218 303	2	M 263
26	311 501 311 B	Cover – Rear wheel bearing	2	M 263
		from Ch. No. 361 2218 304		
(27)	111 501 315	Oil seal (outer) – Rear wheel bearing		
		to Ch. No. 318 500 000	2	
		from Ch. No. 369 000 001 to 361 2218 303	2	M 263
27	113 501 315	Seal – Rear wheel bearing	2	M 263
		from Ch. No. 361 2218 304		
28	211 501 315	Gasket – Bearing cover		
		from Ch. No. 76 300 to 318 500 000	2	
		from Ch. No. 369 000 001	2	M 263
29	211 501 321	Oil thrower		
		from Ch. No. 76 300 to 318 500 000	2	
		from Ch. No. 369 000 001	2	M 263
30	311 501 317	Washer 10.2 x 18		
		to Ch. No. 318 500 000	8	
		from Ch. No. 369 000 001	8	M 263
31	N 12 230 2	Spring washer B 10	8	
32	311 501 325	Bolt, hex. hd. M 10 x 35 – Bearing cover		
		to Ch. No. 318 500 000	8	
		from Ch. No. 369 000 001	8	M 263

(33)	311 501 505	Equalizer spring from Ch. No. 317 000 001 to 318 500 000	1	
33	361 501 505	Equalizer spring to Ch. No. 366 500 000 from Ch. No. 367 000 001	1 1	M 267 M 263
34	361 501 511	Lever - Equalizer spring to Ch. No. 366 500 000 from Ch. No. 317 000 001 to 318 500 000 from Ch. No. 369 000 001	2 2 2	M 267 M 263
35	113 501 899 A	Screw, cheese hd. M 8 x 1 x 20 to Ch. No. 366 500 000 from Ch. No. 317 000 001 to 318 000 001 from Ch. No. 369 000 001	2 2 2	M 267 M 263
36	N 11 152 1	Nut, hex. M 8 x 1	2	
37	361 501 527	Operating rod, left to Ch. No. 366 500 000 from Ch. No. 317 000 001 to 318 500 000 from Ch. No. 369 000 001	1 1 1	M 267 M 263
(37)	361 501 528	Operating rod, right to Ch. No. 366 500 000 from Ch. No. 317 000 001 to 318 500 000 from Ch. No. 369 000 001	1 1 1	M 267 M 263
38	361 501 541	Bonded rubber mounting - Operating rod to Ch. No. 366 500 000 from Ch. No. 317 000 001 to 318 500 000 from Ch. No. 369 000 001	2 2 2	M 267 M 263
39	361 501 549	Rubber plug - Operating rod to Ch. No. 366 500 000 from Ch. No. 317 000 001 to 318 500 000 from Ch. No. 369 000 001	2 2 2	M 267 M 263
40	361 501 555	Support - Auxiliary spring to Ch. No. 366 500 000 from Ch. No. 317 000 001 to 318 500 000 from Ch. No. 369 000 001	2 2 2	M 267 M 263
41	N 10 240 4	Bolt, hex. hd. M 8 x 20	4	
42	N 12 008 2	Lock washer B 8	4	
43	N 11 526 2	Washer B 8.4	4	
44	361 501 565	Rubber bush - Equalizer spring to Ch. No. 366 500 000 from Ch. No. 317 000 001 to 318 500 000 from Ch. No. 369 000 001	2 2 2	M 267 M 263
45	361 501 569	Screw M 12 x 1.5 x 82 - Operating rod to Ch. No. 366 500 000 from Ch. No. 317 000 001 to 318 500 000 from Ch. No. 369 000 001	2 2 2	M 267 M 263
46	N 12 112 1	Spring washer J 12.5	4	

47	361 501 575	Washer 8.8 x 22		
		to Ch. No. 366 500 000	2	M 267
		from Ch. No. 317 000 001 to 318 500 000	2	
		from Ch. No. 369 000 001	2	M 263
48	131 821 150	Spring washer	2	M 267
		to Ch. No. 366 500 000		
(49)	N 11 132 2	Nut, hex. M 8	2	M 267
		to Ch. No. 366 500 000		
49	113 415 431 A	Nut, hex. M 8 (self-locking)		
		from Ch. No. 317 000 001 to 318 500 000	2	
		from Ch. No. 369 000 001	2	M 263
50	311 501 631	Oil deflector - Brake drum	2	
		to Ch. No. 76 299		
51	361 501 737	Rubber stop - Operating rod		
		to Ch. No. 366 500 000	2	M 267
		from Ch. No. 317 000 001 to 318 500 000	2	
		from Ch. No. 369 000 001	2	M 263
52	361 501 753	Guide bush - Operating rod		
		to Ch. No. 366 500 000	2	M 267
		from Ch. No. 317 000 001 to 318 500 000	2	
		from Ch. No. 369 000 001	2	M 263



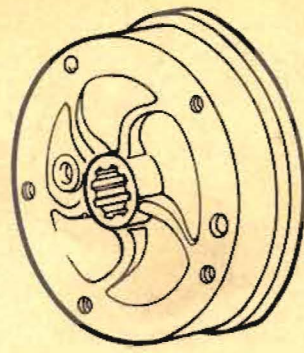
MAIN GROUP 5

REAR AXLE

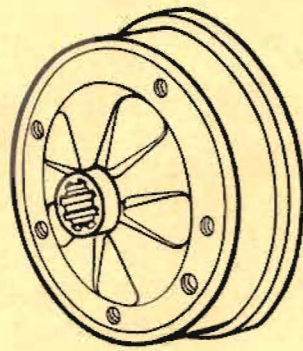
Key	Part No.	Description	Qty.	Type and model
DOUBLE JOINT AXLE				
1	113 501 141	Cap - Joint		
		from Ch. No. 318 015 226 to 318 500 000	4	M 249
		from Ch. No. 319 000 001	4	
2	113 501 151	Dust sleeve - Drive shaft		
		from Ch. No. 318 015 226 to 318 500 000	4	M 249
		from Ch. No. 319 000 001	4	
3	113 501 157	Retaining clip 59 mm dia. - Dust sleeve		
		from Ch. No. 318 015 226 to 318 500 000	4	M 249
		from Ch. No. 319 000 001	4	
4	113 501 159	Retaining clip 34 mm dia. - Dust sleeve		
		from Ch. No. 318 015 226 to 318 500 000	4	M 249
		from Ch. No. 319 000 001	4	
5	131 501 191	Rubber stop - Spring plate		
		from Ch. No. 318 015 226 to 318 500 000	2	M 249
		from Ch. No. 319 000 001	2	
6	113 501 211 B	Drive shaft	2	
		from Ch. No. 319 000 001		
(6)	311 501 211	Drive shaft, left	1	M 249
		from Ch. No. 318 015 226 to 311 2114 245		
(6)	311 501 211 B	Drive shaft, left	1	M 249
		from Ch. No. 311 2114 246		
(6)	311 501 212	Drive shaft, right	1	M 249
		from Ch. No. 318 015 226 to 311 2114 245		
(6)	311 501 212 B	Drive shaft, right	1	M 249
		from Ch. No. 311 2114 246		
7	113 501 229 A	Screw, cheese hd. M 8 x 47		
		for constant velocity joint		
		from Ch. No. 318 015 226 to 318 500 000	24	M 249
		from Ch. No. 319 000 001	24	
8	N 15 371 1	Spring washer 8.4		
		from Ch. No. 318 015 226 to 318 500 000	24	M 249
		from Ch. No. 319 000 001	24	
9	113 501 231	Rear wheel shaft		
		from Ch. No. 318 015 226 to 318 500 000	2	M 249
		from Ch. No. 319 000 001	2	
10	113 501 243	Distance tube between inner ball bearing and outer roller bearing		
		from Ch. No. 318 015 226 to 318 500 000	2	M 249
		from Ch. No. 319 000 001	2	
11	113 501 269	Repair cap - Constant velocity joint		
		from Ch. No. 318 015 226 to 318 500 000	X	M 249
		from Ch. No. 319 000 001	X	

12	113 501 277 A	Roller bearing, outer for rear wheel from Ch. No. 318 015 226 to 318 500 000	2	M 249
		from Ch. No. 319 000 001	2	
13	113 517 279	Lockring – Drive shaft from Ch. No. 318 015 226 to 318 500 000	4	M 249
		from Ch. No. 319 000 001	4	
14	113 501 283	Ball bearing, inner from Ch. No. 318 015 226 to 318 500 000	2	M 249
		from Ch. No. 319 000 001	2	
(15)	113 501 291	Gasket – Rear wheel bearing cover from Ch. No. 318 015 226 to 318 500 000	2	M 249
		from Ch. No. 319 000 001 to October 1971	2	
15	113 501 291 B	Gasket – Rear wheel bearing cover from Ch. No. November 1971	2	
16	113 501 303	Spacer, outer – Rear wheel bearing from Ch. No. 318 015 226 to 318 500 000	2	M 249
		from Ch. No. 319 000 001		
17	113 501 305	Spacer, inner from Ch. No. 318 015 226 to 318 500 000	2	M 249
		from Ch. No. 319 000 001	2	
18	113 501 311	Cover – Rear wheel bearing from Ch. No. 318 015 226 to 318 500 000	2	M 249
		from Ch. No. 319 000 001	2	
19	113 501 315	Seal – Rear wheel bearing from Ch. No. 318 015 226 to 318 500 000	4	M 249
		from Ch. No. 319 000 001	4	
20	N 12 319 1	Lockring 62 x 2	2	
21	311 501 325	Bolt, hex. hd. M 10 x 35 – Bearing cover from Ch. No. 318 015 226 to 318 500 000	8	M 249
		from Ch. No. 319 000 001	8	
		use: 311 501 317		
22	N 12 231 1	Spring washer A 10	8	
(22)	311 501 317	Washer 10.2 x 18 from Ch. No. 318 015 226 to 318 500 000	8	M 249
		from Ch. No. 319 000 001	8	
23	113 501 327	Concave washer – Drive shaft from Ch. No. 318 015 226 to 318 500 000	4	M 249
		from Ch. No. 319 000 001	4	
24	113 501 329	Spacer plate from Ch. No. 318 015 226 to 318 500 000	12	M 249
		from Ch. No. 319 000 001	12	
25	113 501 331	Constant velocity joint from Ch. No. 318 015 226 to 318 500 000	4	M 249
		from Ch. No. 319 000 001	4	
26	113 501 503 E	Control arm, left from Ch. No. 318 015 226 to 318 500 000	1	M 249
		from Ch. No. 319 000 001	1	

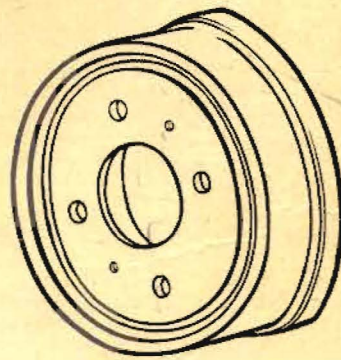
(26)	113 501 504 E	Control arm, right		
		from Ch. No. 318 015 226 to 318 500 000	1	M 249
		from Ch. No. 319 000 001	1	
27	113 501 533	Spacer 22 x 54 - Fitted bolt		
		from Ch. No. 318 015 226 to 318 500 000	4	M 249
		from Ch. No. 319 000 001	4	
28	113 501 535 A	Fitted bolt		
		for control arm mounting		
		from Ch. No. 318 015 226 to 318 500 000	2	M 249
		from Ch. No. 319 000 001	2	
29	113 501 541 B	Bonded rubber mounting - Control arm		
		from Ch. No. 318 015 226 to 318 500 000	4	M 249
		from Ch. No. 319 000 001	4	
30	113 501 595	Bracket - Brake cable		
		from Ch. No. 318 015 226 to 318 500 000	2	M 249
		from Ch. No. 319 000 001	2	



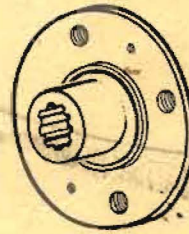
3



4



5



1



7



6



2

MAIN GROUP 5

REAR AXLE

Key	Part No.	Description	Qty.	Type and model
HUB - REAR WHEEL, BRAKE DRUM, REAR				
1	311 501 581	Hub - Rear wheel from Ch. No. 316 000 001	2	
2	311 831 455	Screw M 8 x 10 from Ch. No. 316 000 001	4	
3	311 501 615	Brake drum, rear to Ch. No. 76 299	2	
(3)	311 501 615 D	Brake drum, rear from Ch. No. 76 300 to 221 974	2	
4	311 501 615 E	Brake drum, rear from Ch. No. 221 975 to 315 220 883	2	
5	311 501 615 F	Brake drum, rear from Ch. No. 316 000 001	2	
6	311 501 221	Nut, slotted M 24 x 1.5 - Rear axle shaft	2	
7	N 12 545 1	Cotter pin 5 x 45	2	
(7)	N 12 545 2	Cotter pin 5 x 45 to Ch. No. 221 974	2	361-364

✓

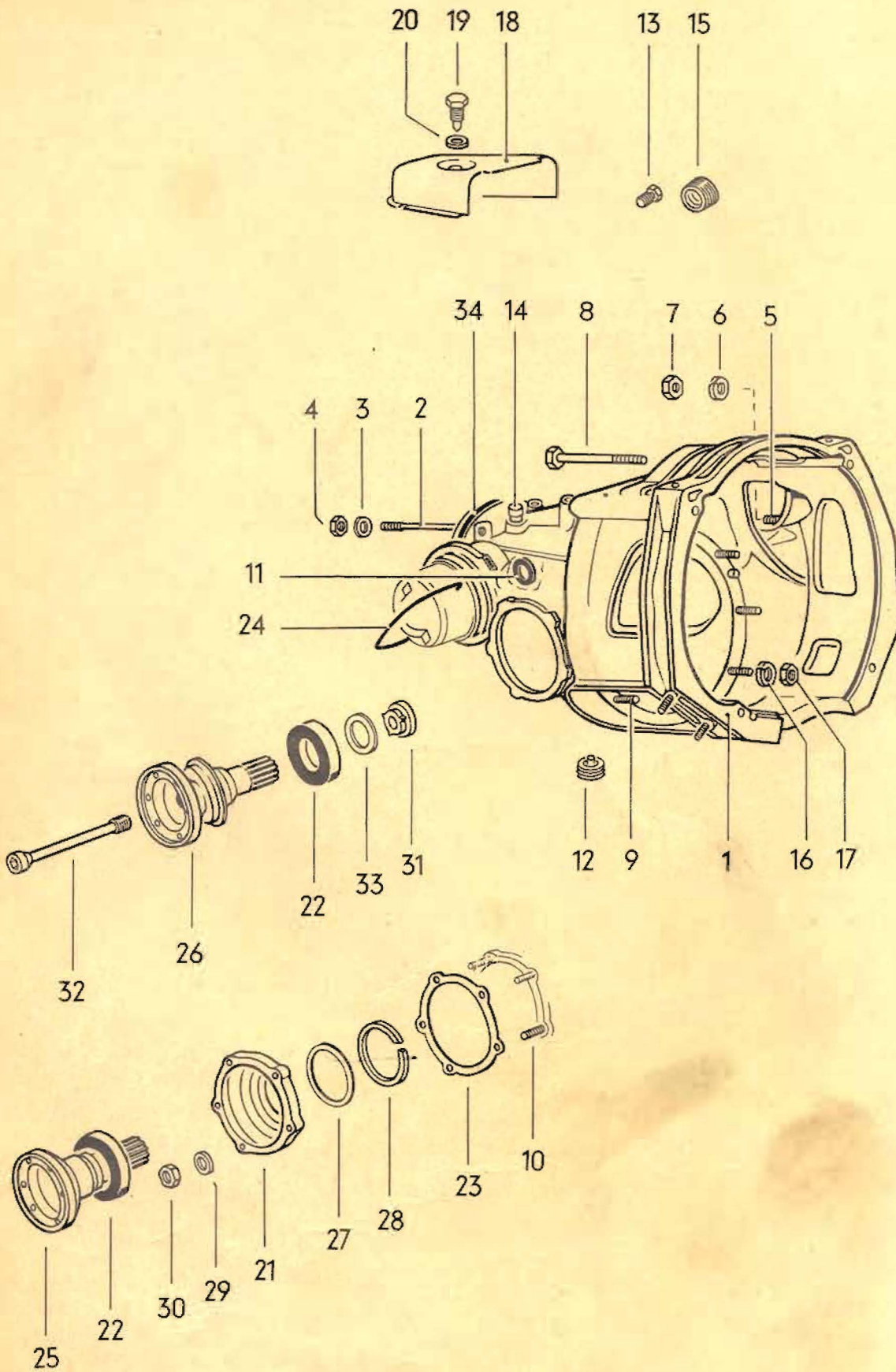


Illustration 26
Supplement 6

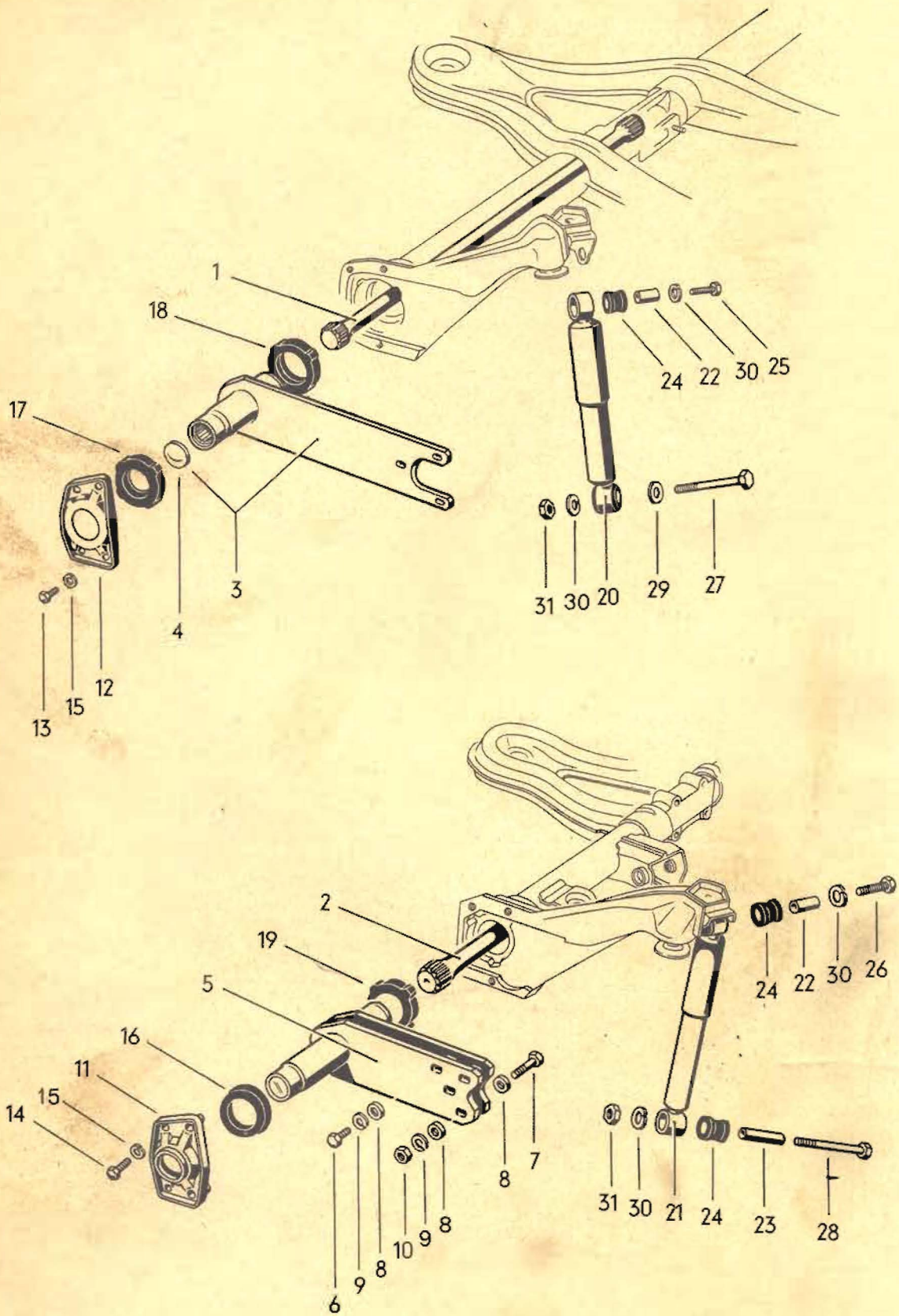
MAIN GROUP 5

REAR AXLE

Key	Part No.	Description	Qty.	Type and model
REAR AXLE HOUSING				
from Ch. No. 318 015 226				M 249
(1)	003 507 105	Rear axle housing to Ch. No. 319 500 000	1	
1	003 507 105 A	Rear axle housing from Ch. No. 310 2000 001	1	
2	N 14 418 1	Stud AM 8 A x 127	4	
3	N 12 228 2	Spring washer B 8	4	
4	N 11 008 8	Nut, hex. M 8	4	
5	N 14 524 1	Stud AM 10 A x 46 – Starter motor	1	
6	N 12 230 2	Spring washer B 10	1	
7	N 11 010 4	Nut, hex. M 10	1	
8	N 10 495 1	Bolt, hex. hd. M 10 x 170 for starter motor	1	
9	N 14 401 3	Stud AM 6 A x 31 – Carrier	9	
10	N 14 545 2	Stud AM 6 A x 36 – Cover to Ch. No. 319 500 000	10	
11	003 507 125 A	Seal 10 x 19 x 7 – Governor	1	
12	113 301 141	Oil drain plug M 24 x 1.5 – Magnetic	1	
(12)	113 301 143	Oil drain plug M 24.5 x 1.5 Magnetic (oversize)	X	
13	003 507 133 A	Plug M 10 x 1 for measuring connection to Ch. No. 310 2111 451	2	
14	003 507 145	Cover – Breather pipe	2	
15	111 301 127 B	Oil filler plug M 24 x 1.5	1	
16	N 12 006 2	Lockring B 6	9	
17	N 11 006 2	Nut, hex. M 6	9	
18	003 507 153	Cover plate for rear axle housing	1	
19	N 10 110 1	Bolt, hex. hd. M 10 x 10	1	
20	N 12 230 2	Spring washer B 10	1	
21	003 507 265	Final drive cover to Ch. No. 319 500 000	2	
22	003 507 269 A 018409399	Seal 60 mm dia. – Flange shaft	2	
23	*003 507 275	Gasket – Final drive cover to Ch. No. 319 500 000	2	
24	003 507 285	Spring clip – Governor protection cap	1	
25	003 507 307 A	Flange shaft, left to Ch. No. 319 500 000 use: to Ch. No. 319 108 900 003 519 221 B	1	
26	003 507 305 C	Flange shaft, left from Ch. No. 310 2000 001	1	

(25)	003 507 308 A	Flange shaft, right to Ch. No. 319 500 000 use: to Ch. No. 319 108 900 003 519 221 B	1
(26)	003 507 306 C	Flange shaft, right from Ch. No. 310 2000 001	1
27	003 507 315	Thrust washer – Flange shaft to Ch. No. 319 500 000	2
28	003 507 317	Lockring – Flange shaft to Ch. No. 319 500 000	2
29	N 12 226 2	Spring washer B 6	10
30	N 11 006 2	Nut, hex. M 6	10
31	003 507 323	Nut – Flange shaft from Ch. No. 310 2000 001	2
(32)	003 507 325	Bolt M 8 x 97.2 – Flange shaft, right from Ch. No. 310 2000 001	1
32	003 507 327	Bolt M 8 x 72.5 – Flange shaft, left from Ch. No. 310 2000 001	1
33	003 507 401	Shim 1.0 mm – Flange shaft from Ch. No. 310 2000 001	X
(33)	003 507 402	Shim 1.07 mm – Flange shaft from Ch. No. 310 2000 001	X
(33)	003 507 403	Shim 1.14 mm – Flange shaft from Ch. No. 310 2000 001	X
(33)	003 507 404	Shim 1.21 mm – Flange shaft from Ch. No. 310 2000 001	X
(33)	003 507 405	Shim 1.28 mm – Flange shaft from Ch. No. 310 2000 001	X
(33)	003 507 406	Shim 1.35 mm – Flange shaft from Ch. No. 310 2000 001	X
(33)	003 507 407	Shim 1.42 mm – Flange shaft from Ch. No. 310 2000 001	X
(33)	003 507 408	Shim 1.49 mm – Flange shaft from Ch. No. 310 2000 001	X
(33)	003 507 409	Shim 1.56 mm – Flange shaft from Ch. No. 310 2000 001	X
(33)	003 507 410	Shim 1.63 mm – Flange shaft from Ch. No. 310 2000 001	X
(33)	003 507 411	Shim 1.70 mm – Flange shaft from Ch. No. 310 2000 001	X
(33)	003 507 412	Shim 1.77 mm – Flange shaft from Ch. No. 310 2000 001	X
(33)	003 507 413	Shim 1.84 mm – Flange shaft from Ch. No. 310 2000 001	X
(33)	003 507 414	Shim 1.91 mm – Flange shaft from Ch. No. 310 2000 001	X

(33)	003 507 415	Shim 1.98 mm - Flange shaft from Ch. No. 310 2000 001	X
(33)	003 507 416	Shim 2.05 mm - Flange shaft from Ch. No. 310 2000 001	X
34	003 598 001	1 set of gaskets for rear axle housing	1



Key	Part No.	Description	Qty.	Type and model
REAR SUSPENSION				
311 511 115		Torsion bar (23 mm dia. x 626), rear, left (marked with 1 white paint ring) to Ch. No. 316 500 000 from Ch. No. 367 000 001 to 368 500 000 from Ch. No. 369 000 001	1 1 1	311-318, 343-346, M 267 361-368 M 263
311 511 115 B		Torsion bar (22 mm dia. x 626), rear, left from Ch. No. 317 000 001 to 318 500 000	1	311-318, 343-346
311 511 115 D		Torsion bar (22 mm dia. x 676), rear, left from Ch. No. 318 015 226 to 318 500 000 from Ch. No. 319 000 001	1 1	M 249: 311-314, 343-346 311-318, 343-346
361 511 115		Torsion bar (24 mm dia. x 626), rear, left (marked with 2 white paint rings) to Ch. No. 366 500 000	1	361-368
361 511 115 C		Torsion bar (23.5 mm dia. x 676), rear, left (marked with 1 white paint ring) from Ch. No. 368 015 226 to 368 500 000 from Ch. No. 369 000 001	1 1	M 249: 361-364 361-368
311 511 116		Torsion bar (23 mm dia. x 626), rear, right (marked with 1 white paint ring) to Ch. No. 316 500 000 from Ch. No. 367 000 001 to 368 500 000 from Ch. No. 369 000 001	1 1 1	311-318, 343-346, M 267 361-368 M 263
311 511 116 B		Torsion bar (22 mm dia. x 626), rear, right from Ch. No. 317 000 001 to 318 500 000	1	311-318, 343-346
311 511 116 D		Torsion bar (22 mm dia. x 676), rear, right from Ch. No. 318 015 226 to 318 500 000 from Ch. No. 319 000 001	1 1	M 249: 311-314, 343-346 311-318, 343-346
361 511 116		Torsion bar (24 mm dia. x 626), rear, right (marked with 2 white paint rings) to Ch. No. 366 500 000	1	361-368
361 511 116 C		Torsion bar 23.5 mm dia. x 676, rear, right (marked with 1 white paint ring) from Ch. No. 368 015 226 to 368 500 000 from Ch. No. 369 000 001	1 1	M 249: 361-364 361-368
111 511 205 A		Spring plate to Ch. No. 318 500 000 from Ch. No. 319 000 001	2 2	M 263
N 11 605 1		Expansion plug 38	2	
113 511 205		Twin leaf spring plate, left from Ch. No. 318 015 226 to 318 500 000 from Ch. No. 319 000 001	1 1	M 249

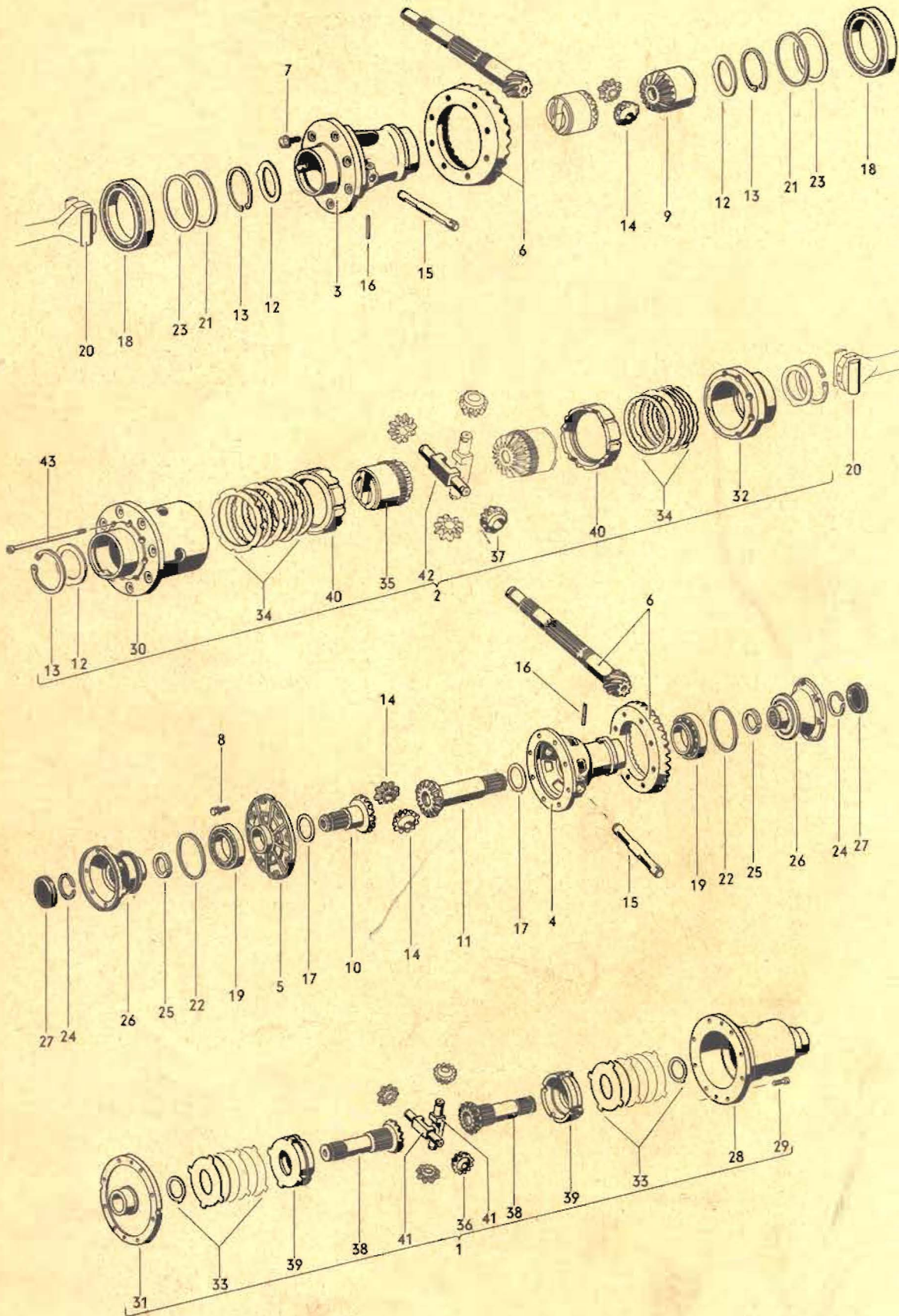
-	113 511 206	Twin leaf spring plate, right		
		from Ch. No. 318 015 226 to 318 500 000	1	M 249
		from Ch. No. 319 000 001	1	
6	N 10 120 2	Bolt, hex. hd. M 12 x 1.5 x 20	4	
7	N 10 140 2	Bolt, hex. hd. M 12 x 1.5 x 40	6	
8	N 11 531 1	Washer A 13	10	
9	211 513 537	Spring washer		
		from Ch. No. 318 015 226 to 318 500 000	10	M 249
		from Ch. No. 319 000 001	10	
10	N 11 020 2	Nut, hex. M 12 x 1.5	6	
11	113 511 219 A	Cover - Spring plate hub	2	
		from Ch. No. 318 015 226 to 318 500 000	2	M 249
		from Ch. No. 319 000 001	2	
		use:		
		111 511 245 E		
		from Ch. No. 318 015 226 to 318 500 000		
12	311 511 219	Cover - Spring plate hub		
		to Ch. No. 318 500 000	2	
		from Ch. No. 319 000 001	2	M 263
		(use 111 511 245 E)		
13	N 10 059 1	Bolt, hex. hd. M 10 x 18	8	
14	N 10 025 1	Bolt, hex. hd. M 10 x 40		
		from Ch. No. 318 015 226 to 318 500 000	8	M 249
		from Ch. No. 319 000 001	8	
15	N 12 011 2	Lock washer A 10	8	
16	111 511 245 E	Rubber bush, outer		
		for spring plate hub		
		from Ch. No. 318 015 226 to 318 500 000	2	M 249
		from Ch. No. 319 000 001	2	
		use:		
		113 511 219 A		
		from Ch. No. 318 015 226 to 318 500 000		
17	311 511 245	Rubber bush, outer left and inner right	2	
		for spring plate hub		
		to Ch. No. 318 500 000		
-	311 511 245	Rubber bush, right inner		
		for spring plate hub		
		from Ch. No. 318 015 226 to 318 500 000	1	M 249
		from Ch. No. 319 000 001	1	
18	311 511 246	Rubber bush, outer right and inner left	2	
		for spring plate hub		
		to Ch. No. 318 500 000		
19	311 511 246	Rubber bush, left inner		
		for spring plate hub		
		from Ch. No. 318 015 226 to 318 500 000	1	M 249
		from Ch. No. 319 000 001	1	

SHOCK ABSORBER, REAR

-	111 513 031 C	Shock absorber, rear (111 513 031 C/D/035 A are supplied) to Ch. No. 317 061 599	2	
-	311 513 031 B	Shock absorber, rear (heavy duty) to Ch. No. 317 061 599	2	
20	311 513 031 C	Shock absorber, rear (311 513 031 C/D/E/M are supplied) from Ch. No. 317 061 600 to 318 500 000 from Ch. No. 369 000 001	2 2	M 263
21	111 513 031 K 113 513 031 N	Shock absorber, rear (311 513 051 K/L/R are supplied) from Ch. No. 318 015 226 to 318 500 000 from Ch. No. 319 000 001	2 2	M 249
-	<u>311 513 031 N</u>	Shock absorber, rear (heavy duty) (311 513 031 N/J are supplied) from Ch. No. 317 061 600 to 318 500 000 from Ch. No. 319 000 001	2 2	M 103
-	311 513 031 P	Shock absorber, rear (adjustable) (see Workshop Bulletin V - 12) to Ch. No. 318 500 000 from Ch. No. 319 000 001	2 2	M 103/M 263
-	311 513 031 Q	Shock absorber, rear (heavy duty) from Ch. No. 318 015 226 to 318 500 000 from Ch. No. 319 000 001	2 2	M 103/M 249 M 103
-	311 513 031 S	Shock absorber, rear (adjustable) (see Workshop Bulletin V - 12) from Ch. No. 319 000 001	2	
-	311 513 041	Shock absorber, rear, adjustable, with auxiliary spring (see Workshop Bulletin V - 12) to Ch. No. 318 500 000 from Ch. No. 369 000 001	2 2	M 263
-	311 513 041 A	Shock absorber, rear, adjustable, with auxiliary spring (see Workshop Bulletin V - 12) from Ch. No. 319 000 001	2	
22	111 413 371 A	Bush - Rubber grommet - Shock absorber 311 513 031 B/N/Q to Ch. No. 318 500 000 from Ch. No. 319 000 001	4 2	
23	113 513 371	Bush - Grommet for shock absorber 311 513 031 K/L /R/Q from Ch. No. 318 015 226 to 318 500 000 from Ch. No. 319 000 001	2 2	M 249
24	111 413 381 A	Grommet - Shock absorber 311 513 031 B/N/Q	4	

-	311 513 381	Grommet - Shock absorber 311 513 031 Q	2	M 103
25	311 513 471	Bolt, hex. hd. M 12 x 1.5 x 50 for shock absorber mounting to Ch. No. 168 497	4	
		from Ch. No. 168 498 to 318 500 000	2	
		from Ch. No. 369 000 001	2	M 263
26	311 513 471	Bolt, hex. hd. M 12 x 1.5 x 50 for shock absorber mounting, upper		
		from Ch. No. 318 015 226 to 318 500 000	2	M 249
		from Ch. No. 319 000 001	2	
27	361 501 569	Bolt, hex. hd. M 12 x 1.5 x 82 for shock absorber mounting, lower		
		from Ch. No. 168 498 to 318 500 000	2	
		from Ch. No. 369 000 001	2	M 263
28	N 10 156 3	Bolt, hex. hd. BM 12 x 1.5 x 70 for shock absorber mounting, lower		
		from Ch. No. 318 015 226 to 318 500 000	2	M 249
		from Ch. No. 319 000 001	2	
29	113 101 129	Washer 12.2 x 22	2	
30	N 12 012 2	Lock washer B 12	4	
31	N 11 020 2	Nut, hex. M 12 x 1.5	2	

M 6.50



MAIN GROUP 5

REAR AXLE

Key	Part No.	Description	Qty.	Type and model
DIFFERENTIAL				
LIMITED SLIP DIFFERENTIAL				
1	001 517 025	Limited slip differential from Ch. No. 319 000 001	1	M 220
2	181 517 025	Limited slip differential to Ch. No. 318 500 000 from Ch. No. 319 000 001	1 1	M 220 M 220/M 263
-	113 301 179 C	Final drive cover, left from Ch. No. 315 158 980 to 318 500 000 from Ch. No. 319 000 001	1 1	M 220 M 220/M 263
-	113 301 179 D	Final drive cover, left to Ch. No. 315 158 979	1	M 220
-	113 301 180 C	Final drive cover, right from Ch. No. 315 158 980 to 318 500 000 from Ch. No. 319 000 001	1 1	M 220 M 220/M 263
-	113 301 180 D	Final drive cover, right to Ch. No. 315 158 979	1	M 220
3	113 517 121 D	Differential housing to Ch. No. 318 500 000 from Ch. No. 319 000 001 use: to Ch. No. 316 042 518 113 517 145 B	1 1	M 263
4	113 517 121 F	Differential housing from Ch. 319 000 001	1	
5	113 517 135	Cover - Differential housing from Ch. No. 319 000 001	1	
-	311 517 143	Ring gear and drive pinion 8 : 33 to Ch. No. 318 032 599	1	
6	311 517 143 B	Ring gear and drive pinion 8 : 33 from Ch. No. 318 032 600 to January 1970	1	
-	311 517 143 D	Ring gear and drive pinion 8 : 33 from Ch. No. February 1970	1	
-	113 517 145	Bolt, hex. hd. - Ring gear to Ch. No. 316 042 518	8	
7	113 517 145 B	Bolt, hex. hd. - Ring gear from Ch. No. 316 042 519 to 318 500 000 from Ch. No. 319 000 001	8 8	M 263
8	N 90 112 1	Bolt, hex. hd. M 10 x 28.5 from Ch. No. 319 000 001	8	
9	113 517 157	Side gear - Differential to Ch. No. 318 500 000 from Ch. No. 319 000 001 001 blue 003 pink 002 green	2 2	M 263

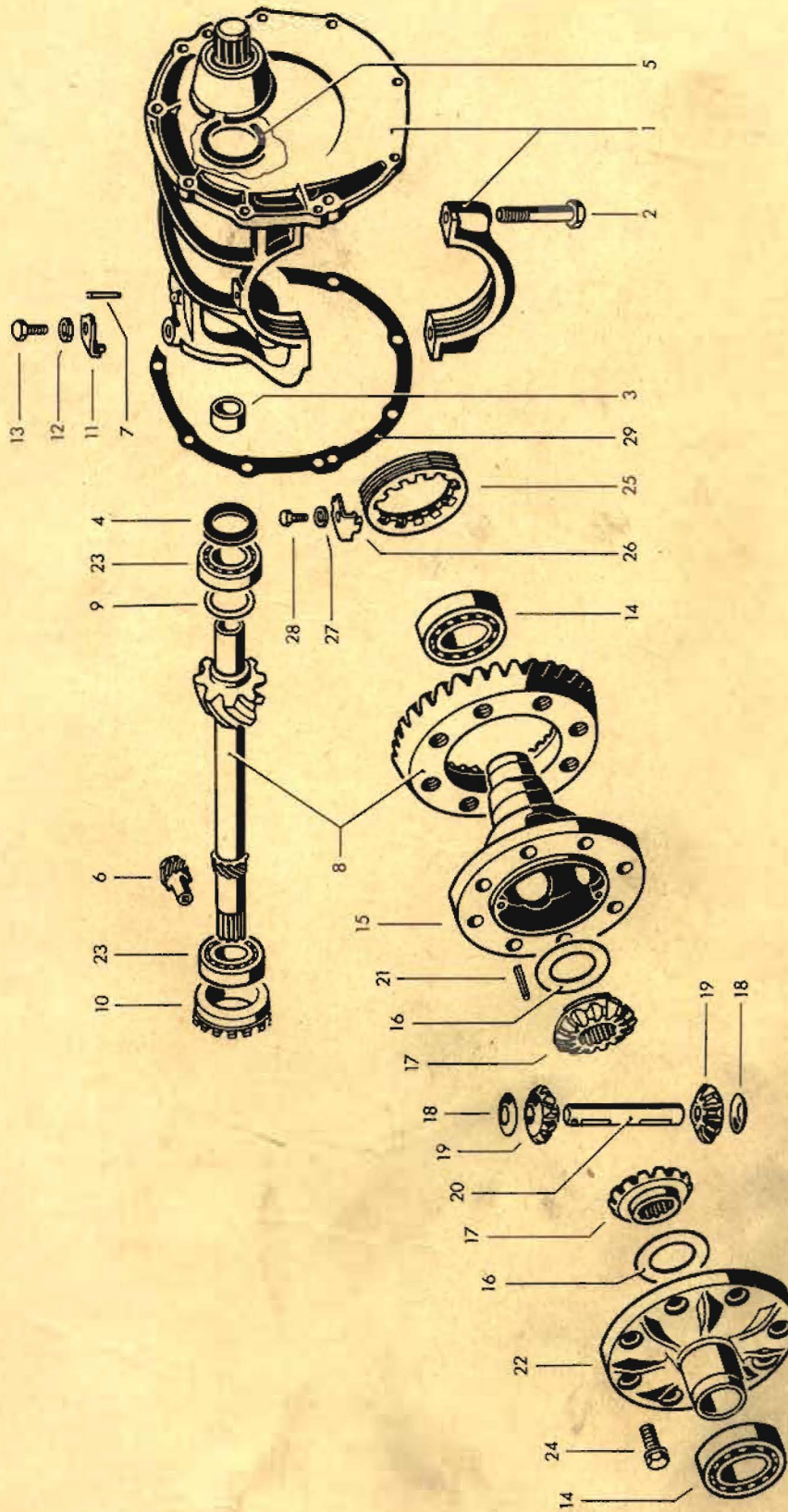
10	113 517 157 B	Differential side gear, left from Ch. No. 319 000 001 use: 004 517 241/242 243 244	1	
11	113 517 158 A	Differential side gear, right from Ch. No. 319 000 001 use: 004 517 241/242/243/244	1	
12	113 517 167 C	Thrust washer 4.0 mm – Differential to Ch. No. 318 500 000 from Ch. No. 319 000 001	X X	M 263
-	113 517 167 D	Thrust washer 4.1 mm – Differential to Ch. No. 318 500 000 from Ch. No. 319 000 001	X X	M 263
-	113 517 167 E	Thrust washer 3.9 mm – Differential to Ch. No. 318 500 000 from Ch. No. 319 000 001	X X	M 263
-	113 517 167 H	Thrust washer 4.2 mm – Differential to Ch. No. 318 500 000 from Ch. No. 319 000 001	X X	M 263
13	N 12 320 1	Lockring 65 x 2.5	2	
14	111 517 169	Pinion – Differential	2	
15	111 517 177	Shaft – Differential pinion	1	
16	111 517 181 A	Lock pin – Differential pinion shaft	1	
17	113 517 183	Thrust washer – Differential side gears from Ch. No. 319 000 001	2	
18	113 517 185	Ball bearing – Differential to Ch. No. 318 500 000 from Ch. No. 319 000 001	2 2	M 263
19	113 517 185 B	Taper roller bearing – Differential from Ch. No. 319 000 001	2	
20	113 517 191	Fulcrum plate – Rear axle shaft to Ch. No. 318 500 000 from Ch. No. 319 000 001	4 4	M 263
-	113 517 193	Fulcrum plate (oversize) – Rear axle shaft to Ch. No. 318 500 000 from Ch. No. 319 000 001	X X	M 263
21	113 517 199	Shim 2.8 mm – Differential to Ch. No. 318 500 000 from Ch. No. 319 000 001	X X	M 263
-	113 517 201	Shim 2.9 mm – Differential to Ch. No. 318 500 000 from Ch. No. 319 000 001	X X	M 263

22	113 517 201 A	Shim 0.15 mm No. 1 – Differential from Ch. No. 319 000 001	X	
–	113 517 202 A	Shim 0.20 mm No. 2 – Differential from Ch. No. 319 000 001	X	
–	113 517 203	Shim 3.0 mm – Differential to Ch. No. 318 500 000 from Ch. No. 319 000 001	X X	M 263
–	113 517 203 A	Shim 0.30 mm No. 3 – Differential from Ch. No. 319 000 001	X	
–	113 517 204 A	Shim 0.40 mm No. 4 – Differential from Ch. No. 319 000 001	X	
–	113 517 205	Shim 3.1 mm – Differential to Ch. No. 318 500 000 from Ch. No. 319 000 001	X X	M 263
–	113 517 205 A	Shim 0.50 mm No. 5 – Differential from Ch. No. 319 000 001	X	
–	113 517 206 A	Shim 0.60 mm No. 6 – Differential from Ch. No. 319 000 001	X	
–	113 517 207	Shim 3.2 mm – Differential to Ch. No. 318 500 000 from Ch. No. 319 000 001	X X	M 263
–	113 517 207 A	Shim 0.70 mm No. 7 – Differential from Ch. No. 319 000 001	X	
–	113 517 208 A	Shim 0.80 mm No. 8 – Differential from Ch. No. 319 000 001	X	
–	113 517 209	Shim 3.3 mm – Differential to Ch. No. 318 500 000 from Ch. No. 319 000 001	X X	M 263
–	113 517 209 A	Shim 0.90 mm No. 9 – Differential from Ch. No. 319 000 001	X	
–	113 517 210 A	Shim 1.0 mm No. 10 – Differential from Ch. No. 319 000 001	X	
–	113 517 211	Shim 3.4 mm – Differential to Ch. No. 318 500 000 from Ch. No. 319 000 001	X X	M 263
–	113 517 211 A	Shim 1.2 mm No. 11 – Differential from Ch. No. 319 000 001	X	
–	113 517 213	Shim 3.5 mm – Differential to Ch. No. 318 500 000 from Ch. No. 319 000 001	X X	M 263
–	113 517 215	Shim 3.6 mm – Differential to Ch. No. 318 500 000 from Ch. No. 319 000 001	X X	M 263
–	113 517 217	Shim 3.7 mm – Differential to Ch. No. 318 500 000 from Ch. No. 319 000 001	X X	M 263
–	113 517 219	Shim 3.8 mm – Differential to Ch. No. 318 500 000 from Ch. No. 319 000 001	X X	M 263

-	113 517 221	Shim 3.9 mm – Differential to Ch. No. 318 500 000	X	
		from Ch. No. 319 000 001	X	M 263
-	004 517 241	Spacer sleeve (28.85 mm long) for differential side gear from Ch. No. 319 000 001	X	
-	004 517 242	Spacer sleeve (28.94 mm long) for differential side gear from Ch. No. 319 000 001	X	
-	004 517 243	Spacer sleeve (29.03 mm long) for differential side gear from Ch. No. 319 000 001	X	
-	004 517 244	Spacer sleeve (29.12 mm long) for differential side gear from Ch. No. 319 000 001	X	
23	113 517 245	Shim 0.25 mm – Differential to Ch. No. 318 500 000	X	
		from Ch. No. 319 000 001	X	M 263
24	113 517 279	Circlip – Joint flange from Ch. No. 319 000 001	2	
25	113 517 281	Spacer ring – Joint flange from Ch. No. 319 000 001	2	
26	113 517 283	Joint flange with protective washer from Ch. No. 319 000 001	2	
27	113 517 289 A	Cap – Joint flange from Ch. No. 319 000 001	2	
28	001 517 601	Housing for differential 001 517 025 from Ch. No. 319 000 001	1	M 220
29	N 14 761 1	Screw, cheese hd. M 6 x 12	2	
30	211 517 601 B	Differential housing for differential 211 517 025 B/C/D to Ch. No. 318 500 000	1	M 220
		from Ch. No. 319 000 001	1	M 220/M 263
		use: 211 517 619 A to Ch. No. 318 171 040		
-	181 517 601	Differential housing for differential 181 517 025 to Ch. No. 318 500 000	1	M 220
		from Ch. No. 319 000 001	1	M 220/M 263
31	001 517 605	Cover – Differential housing for differential 001 517 025 from Ch. No. 319 000 001	1	M 220
-	181 517 605	Cover – Differential housing for differential 181 517 025 to Ch. No. 318 500 000	1	M 220
		from Ch. No. 319 000 001	1	M 220/M 263

32	211 517 605 B	Cover – Differential housing for differential 211 517 025 B/C/D to Ch. No. 318 500 000 from Ch. No. 319 000 001 use: 211 517 619 A to Ch. No. 318 171 040	1 1	M 220 M 220/M 263
33	001 517 619	Set of discs for differential 001 517 025 from Ch. No. 319 000 001	2	M 220
-	181 517 619	Set of discs for differential 181 517 025 to Ch. No. 318 500 000 from Ch. No. 319 000 001	1 1	M 220 M 220/M 263
34	211 517 619 A	Set of discs for differential 211 517 025 B/C/D to Ch. No. 318 500 000 from Ch. No. 319 000 001	2 2	M 220 M 220/M 263
35	211 517 621 A	Side gear – Differential for differential 211 517 025 B/C/D to Ch. No. 318 500 000 from Ch. No. 319 000 001 001 blue 003 pink	2 2	M 220 M 220/M 263
36	001 517 625	Differential pinion for differential 001 517 025 from Ch. No. 319 000 001	4	M 220
37	211 517 625	Pinion – Differential for differential 211 517 025 B/C/D to Ch. No. 318 500 000 from Ch. No. 319 000 001	4 4	M 220 M 220/M 263
38	001 517 627	Side gear for differential 001 517 025 from Ch. No. 319 000 001	2	M 220
39	001 517 631	Pressure ring for differential 001 517 025 from Ch. No. 319 000 001	2	M 220
-	181 517 631	Pressure ring for differential 181 517 025 to Ch. No. 318 500 000 from Ch. No. 319 000 001	2 2	M 220 M 220/M 263
40	211 517 631	Pressure ring for differential 211 517 025 B/C/D to Ch. No. 318 500 000 from Ch. No. 319 000 001	2 2	M 220 M 220/M 263
41	001 517 635	Shaft – Differential pinion for differential 001 517 025 from Ch. No. 319 000 001	2	M 220

42	211 517 635	Shaft - Differential pinion for differential 211 517 025 B/C/D to Ch. No. 318 500 000 from Ch. No. 319 000 001	2 2	M 220 M 220/M 263
-	181 517 639	Drive pin for differential 181 517 025 to Ch. No. 318 500 000 from Ch. No. 319 000 001	4 4	M 220 M 220/M 263
43	211 517 641 A	Bolt - Housing for differential 211 517 025 B/C/D to Ch. No. 318 500 000 from Ch. No. 319 000 001	8 8	M 220 M 220/M 263



Key	Part No.	Description	Qty.	Type and model
DIFFERENTIAL				
from Ch. No. 318 015 226				M 249
1	003 519 043	Carrier - Final drive	1	
2	N 10 452 2	Bolt, hex. hd. BM 10 x 52	4	
3	003 519 073	Bush - Main drive shaft	1	
4	003 519 085 A	Seal 30 x 42 x 7 - Drive pinion	2	
5	003 519 089 B	Seal 42 x 55 x 7 - Torque converter	1	
6	003 519 095 A	Drive gear - Governor	1	
7	N 13 348 1	Tensioning sleeve 3 x 24	1	
8	003 519 101	Drive pinion and ring gear 9 : 33	1	
9	003 519 141 A	Shim 1.0 mm - Drive pinion	X	
(9)	003 519 142 A	Shim 1.05 mm - Drive pinion	X	
(9)	003 519 143 A	Shim 1.1 mm - Drive pinion	X	
(9)	003 519 144 A	Shim 1.15 mm - Drive pinion	X	
(9)	003 519 145 A	Shim 1.2 mm - Drive pinion	X	
(9)	003 519 146 A	Shim 1.25 mm - Drive pinion	X	
(9)	003 519 147 A	Shim 1.3 mm - Drive pinion	X	
(9)	003 519 148 A	Shim 1.35 mm - Drive pinion	X	
(9)	003 519 149 A	Shim 1.4 mm - Drive pinion	X	
(9)	003 519 150 A	Shim 1.45 mm - Drive pinion	X	
(9)	003 519 151 A	Shim 1.5 mm - Drive pinion	X	
(9)	003 519 152 A	Shim 1.55 mm - Drive pinion	X	
(9)	003 519 153 A	Shim 1.6 mm - Drive pinion	X	
(9)	003 519 154 A	Shim 1.65 mm - Drive pinion	X	
(9)	003 519 155 A	Shim 1.7 mm - Drive pinion	X	
10	003 519 167	Adjusting nut - Drive pinion	1	
11	003 519 175	Lock plate - Adjusting nut	X	
(11)	003 519 175 A	Lock plate - Adjusting nut	X	
(11)	003 519 176	Lock plate - Adjusting nut	X	
(11)	003 519 176 A	Lock plate - Adjusting nut	X	
12	N 12 006 2	Lock washer B 6	1	
13	N 10 210 7	Bolt, hex. hd. M 6 x 10 K	1	
14	003 519 185	Taper roller bearing - Differential	2	
15	003 519 211 A	Housing - Differential	1	
16	003 519 215	Thrust washer - Side gear	2	
17	003 519 221 B	Side gear	2	
		use:		
		to Ch. No. 319 108 900		
		003 507 307 A/308 A		
18	003 519 225	Thrust washer - Differential pinion	2	
19	004 517 169	Differential pinion	2	
20	003 519 235	Shaft - Differential pinions	1	
21	N 13 345 1	Tensioning sleeve 5 x 32	1	
22	003 519 245 A	Cover - Differential housing	1	
23	003 519 251	Taper roller bearing - Drive pinion	2	

24	003 519 335	Bolt, hex. hd. M 9 x 23.5 for ring gear mounting	8
25	003 519 343	Adjusting nut - Differential	2
26	003 519 349	Lock plate	2
(26)	003 519 350	Lock plate	2
27	N 12 006 2	Lock washer B 6	2
28	N 10 210 7	Bolt, hex. hd. M 6 x 10 K	2
29	003 598 001	1 set of gaskets for rear axle housing	1

MAIN GROUP 5

Part No.	Description	Qty.
	REPAIR KITS	
003 598 001	Set of gaskets for rear axle housing from Ch. No. 318 015 226: M 249 comprising:	
	Gasket – Rear axle housing	1
003 325 381	Seal 96 mm dia. for governor cap	1
	Gasket – Carrier	1
003 507 275	Gasket – Final drive cover	2
	Seal 185 mm dia. – Rear axle housing	1
111 598 021 A	Dust sleeve with securing parts to Ch. No. 318 500 000 from Ch. No. 319 000 001: M 263 comprising:	
	Dust sleeve	1
111 501 157 B	Strip – Hose connection 85 – 103 mm dia.	1
111 501 159 B	Strip – Hose connection 44 – 64 mm dia.	1
N 11 004 2	Nut, hex. M 4	6
N 11 251 1	Screw, button hd. AM 4 x 18	6
N 11 664 1	Washer 4.1	12
111 598 051	1 set of gaskets – 1 rear wheel to Ch. No. 76 299 comprising:	
111 501 286	Washer between ball bearing and spacer	1
111 501 291	Gasket for bearing cover	1
111 501 296	Gasket between spacer and rear wheel bearing	1
111 501 303 A	Spacer (outer) for rear wheel bearing	1
111 501 315	Oil seal (outer) – Rear wheel bearing	1
N 12 545 1	Cotter pin 5 x 45	1

311 598 051**1 set of gaskets – 1 rear wheel**

from Ch. No. 76 300 to 318 500 000

comprising:

111 501 286	Washer between ball bearing and spacer	1
111 501 291	Gasket for bearing cover	1
111 501 296	Gasket between spacer and rear wheel bearing	1
111 501 303 A	Spacer (outer) for rear wheel bearing	1
111 501 315	Oil seal (outer) – Rear wheel bearing	1
211 501 315	Oil thrower	1
211 501 321	Oil thrower	1
N 12 545 1	Cotter pin 5 x 45	1

113 598 085**Repair kit****for joint flange**

from Ch. No. 319 000 001

comprising:

113 301 189 A	Gasket	1
113 517 279	Circlip	1
113 517 289 A	Cap	1
N 15 371 1	Lock washer	6