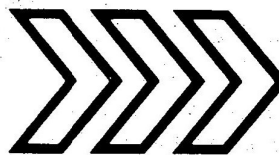


EASY INSTALLATION

Mounting Instruction for VDO COCKPIT SET
with
AMMETER - TEMPERATURE GAUGE - PRESSURE GAUGE



VDO Tachometer Werke
Adolf Schindling GmbH
Frankfurt am Main W 13
Gräfrstraße 103

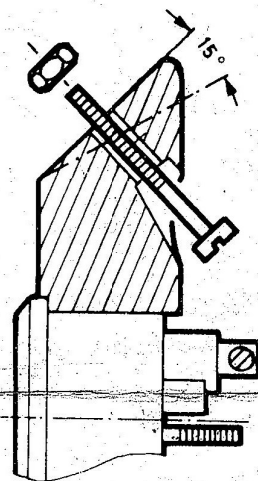
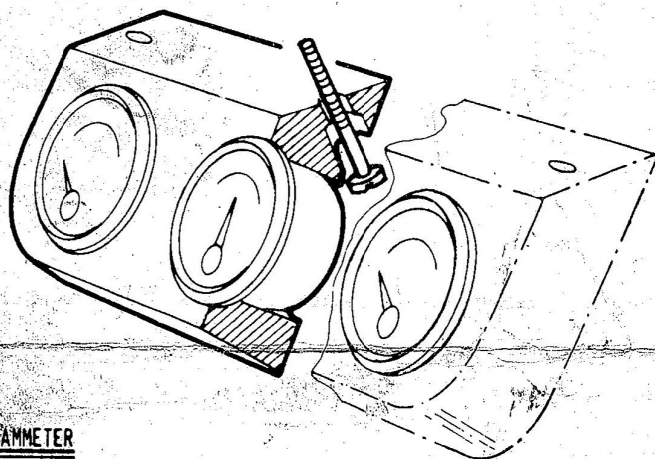
A./ BRACKET

The VDO Cockpit Safety Bracket can be installed at any available or desirable space in view of the driver.
To assure positive, safe and secure attachment to chosen mountingth place use either

bolts and nuts ($3/16"$ diameter - $1"$ or $1\ 1/4"$ long), or
sheet-metal (self-tapping) screws ($1" \times 10$ or $1\ 1/2"$).

Bolts require holes of $3/16"$, screws not larger than $1/8"$.

The rubber bracket has a 45° angle which can be altered with a sharp knife by approx. 15° to fit special mounting needs. The bracket has the same texturized surface on both sides to meet all possible installation requirements. Gauges can be pushed out of the rubber bracket, easily.



B./ AMMETER

Before beginning of any wiring disconnect positive battery cable from battery.

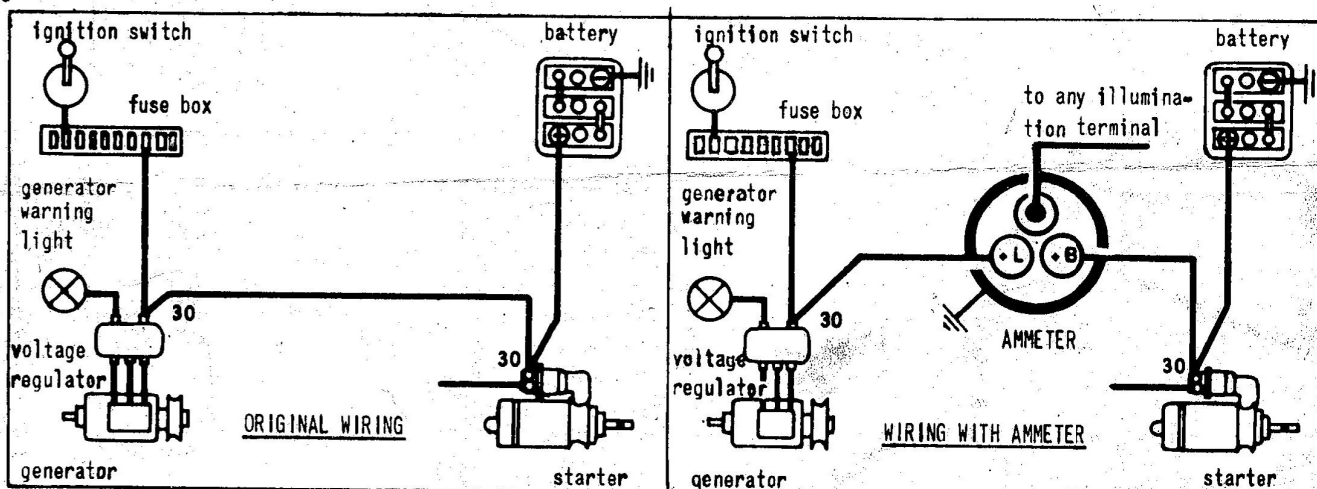
Do not attempt disconnection with running or idling motor, voltage regulator will be destroyed immediately.

Wiring diagram below shows wiring of electric system without and with ammeter. All current should be routed through ammeter, except starter current from starter to battery.

Use No. 10 standard covered wire for ammeter installation (not included).

Connect housing to ground, otherwise illumination will not function.

Re-connect ground- positive battery cable to battery.



For some of the more popular VDO equipped imported cars special mounting instructions are available upon request.
State model and year.

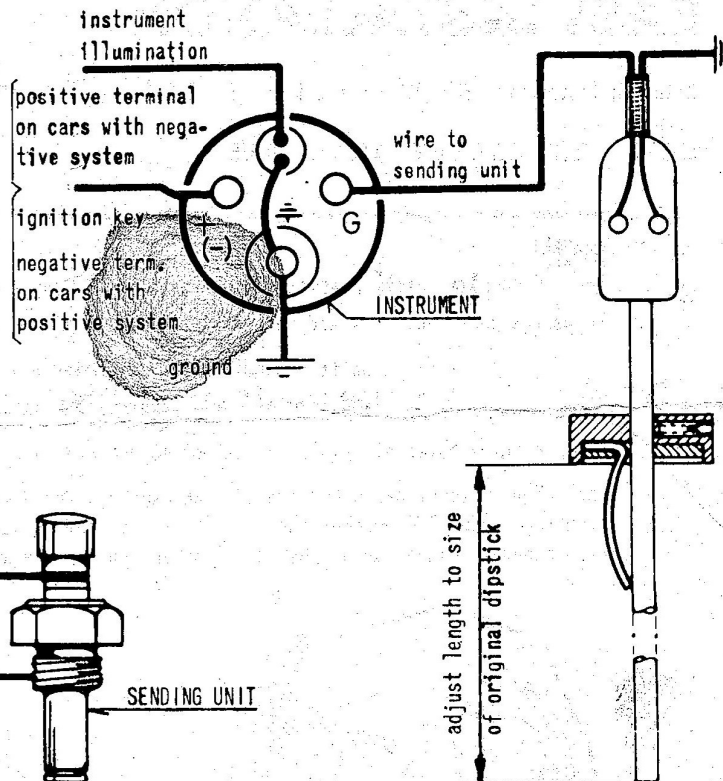
C./ ELECTRIC TEMPERATURE

Install sending unit - according to available opportunities - into factory provided opening for oil temp. warning light sender or oil drain plug or dipstick.

If universal dipstick is used set spacer or stopper at approx. length by using original one as measurement.

Make sure that proper sealing has been obtained.

Request special instruction for VW.

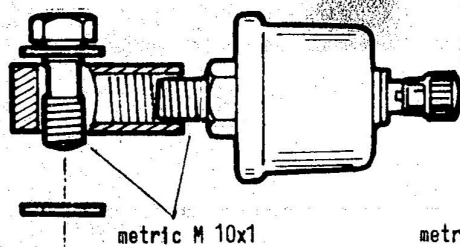


D./ ELECTRIC OIL PRESSURE

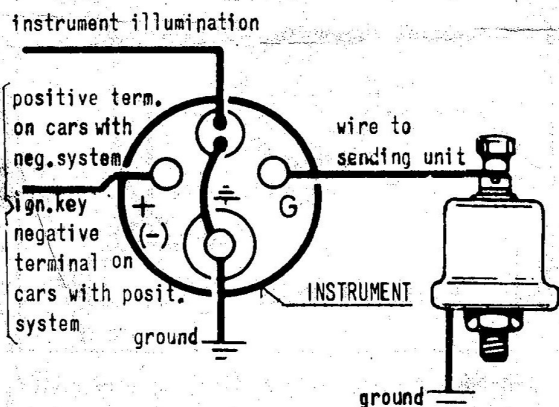
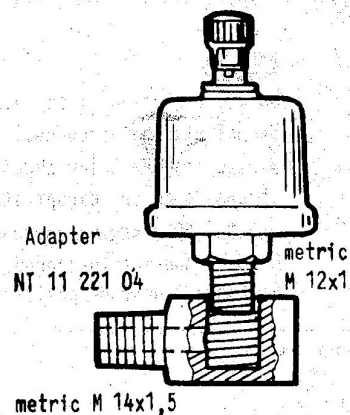
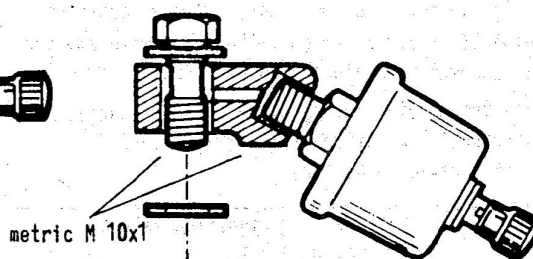
Install sending units in opening provided for use of oil pressure warning switch, if necessary use adapter kits shown below.

Make sure proper sealing has been obtained.

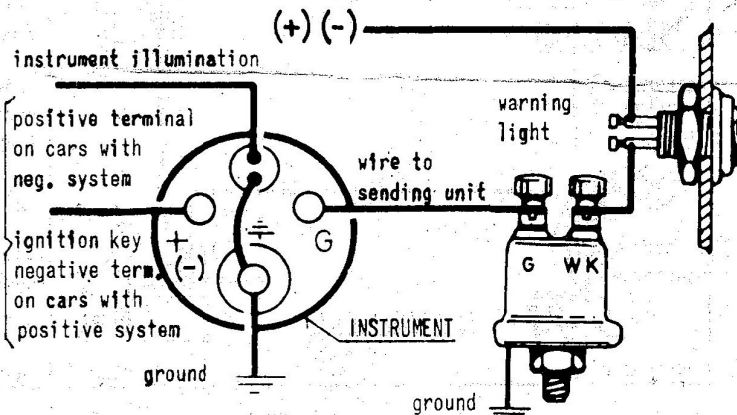
Adapter kit
X 11.1938



Adapter kit
X 11.1937



Oil pressure set without warning light



Oil pressure set with warning light
F 700 685 MA 10/2/E